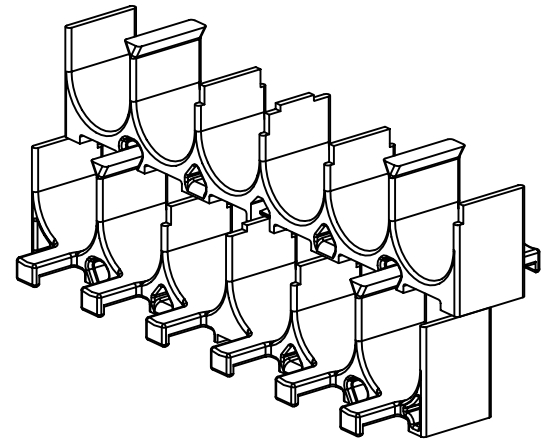
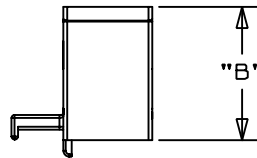
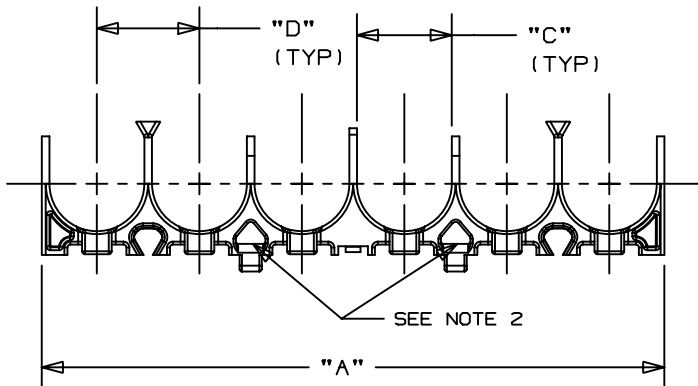
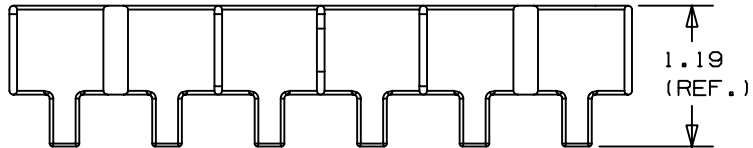


THIS COPY IS PROVIDED ON A RESTRICTED BASIS AND IS NOT TO BE USED IN ANY WAY DETRIMENTAL TO THE INTERESTS OF PANDUIT CORP.

PANDUIT PART NO. *	DIMENSIONS				WEIGHT lbs (grams) / 10 pcs
	"A"	"B"	"C"	"D"	
CRS6- _	5.25 (133.35)	1.12 (28.55)	.800 (20.32)	.860 (21.95)	.4468 (202.7)



NOTES:

- *1. SEE CURRENT PRICE SHEET FOR PART NUMBER SUFFIX DESIGNATION FOR PACKAGE SIZE AND COLOR.
2. PRODUCT IS MOUNTED TO APPLICATION SURFACE USING (2) CABLE TIES, UP TO A STANDARD CROSS-SECTION
3. THIS PRODUCT CONTAINS A MALE/FEMALE ATTACHMENT SYSTEM WITH A LOCKING LATCH. MAXIMUM STACK HEIGHT IS EQUAL TO 5 PARTS.
4. STANDARD CABLE TIES OR VELCRO TIES CAN BE USED TO SECURE CABLE TO PART.

DIMENSIONS IN BRACKETS ARE METRIC [mm]

CAD FILENAME/LAYERS G02185DA_PB_CRS6_00

PANDUIT CORP. TINLEY PARK, ILLINOIS

CABLE RACK SPACER
(CRS6- _)

UNLESS OTHERWISE SPECIFIED,
DIMENSIONAL TOLERANCES ARE:
(.X) ±0.05 (1.3) (.XXX) ±0.010 (0.25)
(.XX) ±0.02 (0.5) ANGLES ± 5°

UNLESS OTHERWISE SPECIFIED,
ALL DIMENSIONS ARE GIVEN
IN INCHES, THIRD ANGLE PROJECTION.

DRAWN BY JAD

MAT'L:

SCALE NONE

DATE 12-15-99

POLYCARBONATE
ABS BLEND

DRAWING NO.

GB2185DA

DWG
SIZE
A

REV	DATE	BY	CHK	DESCRIPTION	ECN	R	CUST	SUP
R	12-15-99	JAD		INITIAL RELEASE	GB2185DA	R		