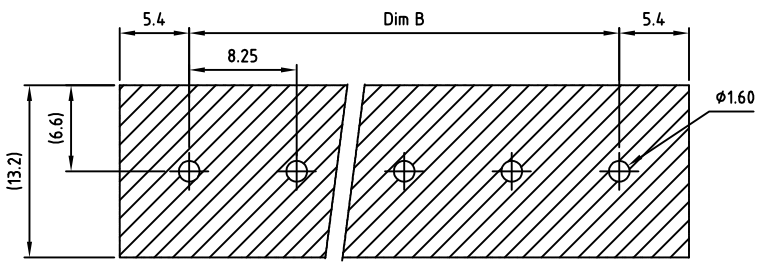
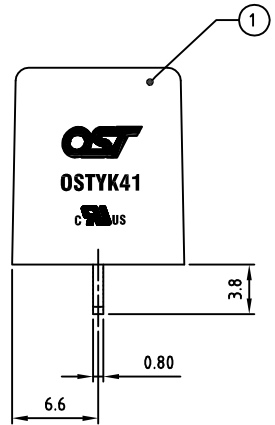
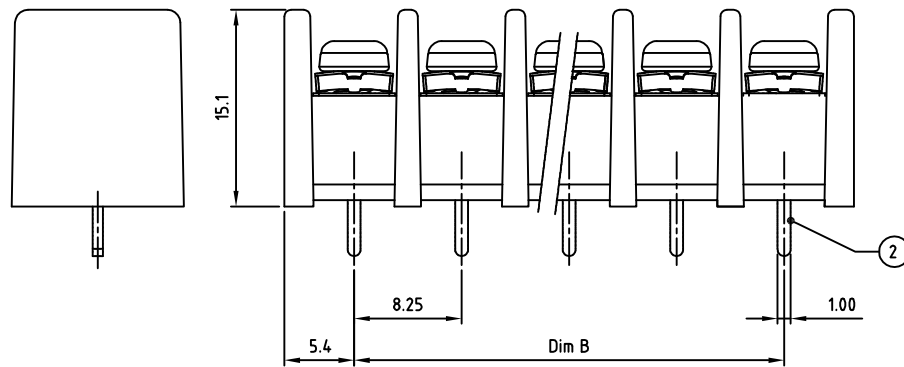
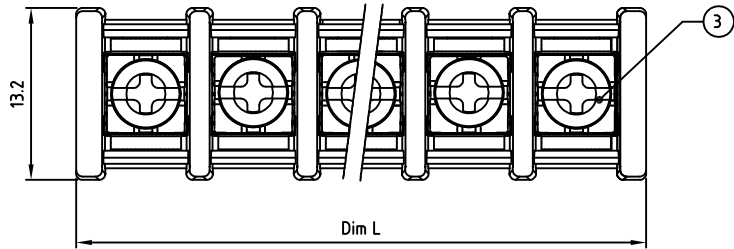


Transfer or duplication of this document as well as the utilisation or communication of its content are not permitted unless express consent is granted. Violations give rise to claims for damages. All rights reserved in case of patent, utility model or design patent registrations.



P.C.B LAYOUT

Technical data

- 1.Nominal voltage: 300V/20A  
PITCH: 8.25mm
- 2.Connection capacity:  
AWG 22-12
- 3.Insulation Withstanding Voltage:  
AC 2500V/MIN
- 4.Insulation Resistance:  
1000M $\Omega$  or more at DC500V
- 5.Tightening torque:  
10.15kgf.cm (8.8 Lb-In / 1.0N.m)
- 6.Screw thread: M3
- 7.Operating temperature range:-40°C ~ 115°C  
Soldering temperature:250°C $\pm$ 10°C /5s
- 8.Undimensioned Tolerances:

Dim.L=P $\times$ 8.25+1.8		
Dim.B=(P-1) $\times$ 8.25		
P= number of poles		
0-30mm	$\pm 0.15$	$\pm 0.20$
over 30mm-60mm	$\pm 0.20$	$\pm 0.30$
over 60mm-90mm	$\pm 0.25$	$\pm 0.40$
over 90mm-180mm	$\pm 0.30$	$\pm 0.50$
over 180mm	$\pm 0.50$	$\pm 0.80$

- 9.Safety approval:
- 10.RoHS Compliance

Part No.: OSTYK412XX030

No. of Poles  
02 2 Poles  
03 3 Poles  
...  
24 24 Poles

3	SCREW+WASHER	STEEL	M3 $\times$ 0.5, Ni Plated	P	
2	CONTACT	BRASS	M3 $\times$ 0.5, Tin PLATED	P	
1	BODY	PA66 UL94V-0	Black	1	
ITEM	NAME OF PART	MATERIAL	NOTES	Q"TY	
DWG	WF. Zhang	DATE 2017.07.18	UNITS: MM	SHEET: 1 OF 1	Tolerance
CHK.	WF. Zhang	DATE 2017.08.08	SCALE: NONE 2:1 (:)	REV: A	X. $\pm 0.50$
APP.		DATE	TITLE: OSTYK412 8.25 Series		X.X $\pm 0.30$
			PART NO. OSTYK412XX030		X* $\pm 1^{\circ}$
			DWG NO. OSTYK412XX030.dwg		

SIGN	DESCRIPTION	CHK.	DATE	



ON-SHORE TECHNOLOGY, INC.