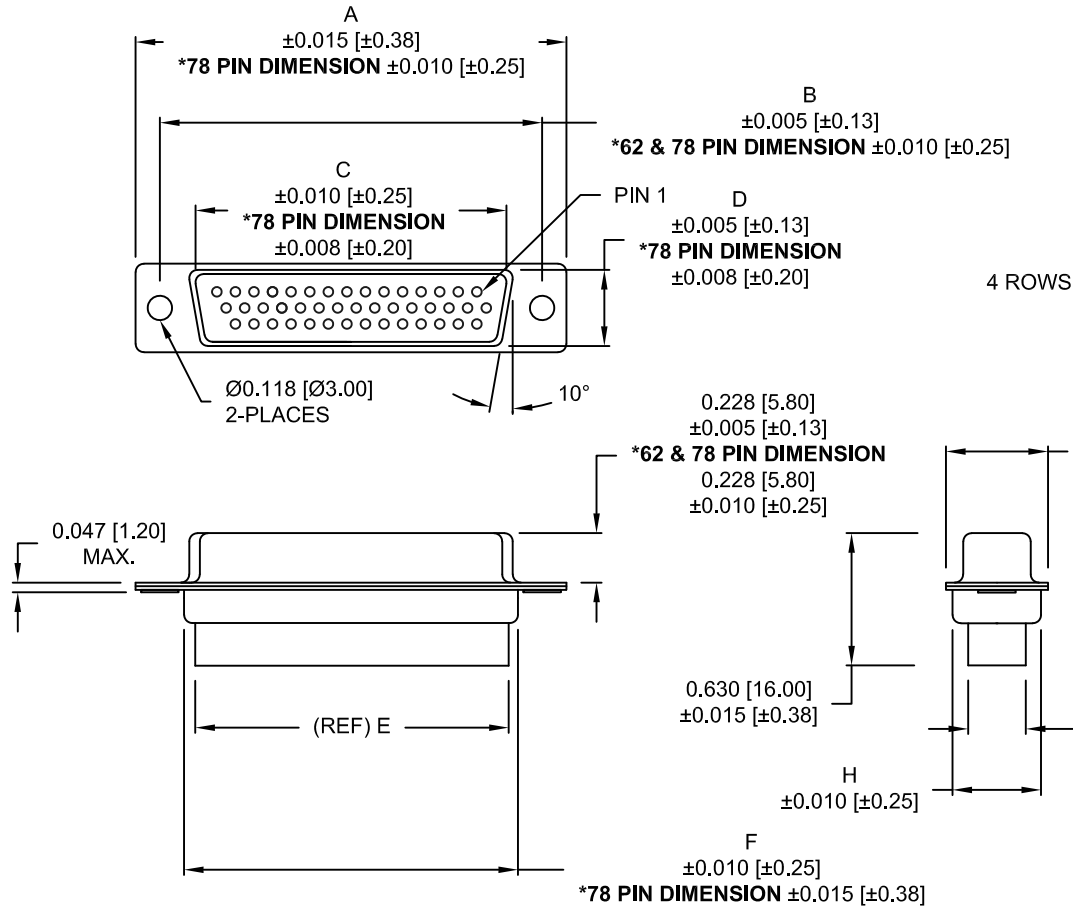
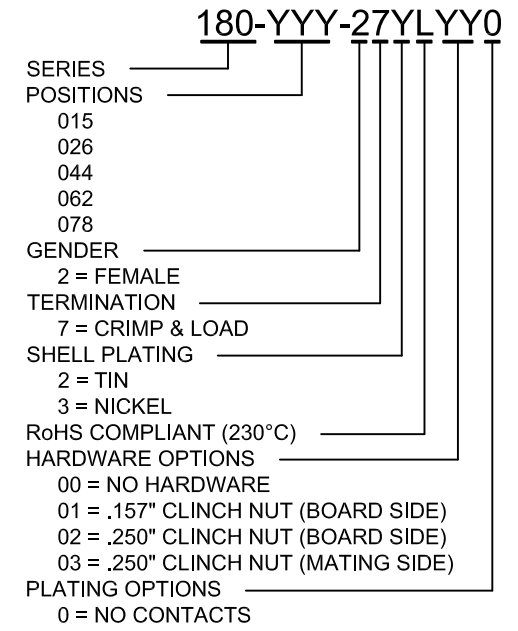


DESCRIPTION: HIGH DENSITY FEMALE - CRIMP AND LOAD

****NOTE: CONTACTS MUST BE PURCHASED SEPARATELY****



No. OF PINS	DIMENSIONS							
	A	B	C	D	E	F	G	H
15	1.213	0.984	0.643	0.311	0.610	0.759	0.494	0.421
	30.81	24.99	16.33	7.90	15.50	19.28	12.55	10.70
26	1.541	1.312	0.970	0.311	0.964	1.089	0.494	0.421
	39.14	33.32	24.66	7.90	24.50	27.65	12.55	10.70
44	2.088	1.852	1.511	0.311	1.494	1.618	0.494	0.421
	53.04	47.04	38.38	7.90	37.95	41.10	12.55	10.70
62	2.736	2.500	2.157	0.311	2.142	2.262	0.494	0.421
	69.50	63.50	54.80	7.90	54.40	57.46	12.55	10.70
78	2.644	2.406	2.061	0.422	2.035	2.169	0.605	0.527
	67.16	61.11	52.34	10.72	51.70	55.10	15.37	13.40



MATERIAL:

SHELL: STEEL, TIN OR NICKEL PLATED
 INSULATOR: PBT, UL 94V-O RATED,
 +30% FIBER-GLASS

ELECTRICAL:

INSULATION RESISTANCE: 1,000 MOhms MIN.
 VOLTAGE: 500VAC FOR 1 MINUTE
 TEMPERATURE: -50° C TO 100° C

UNITS = inch[mm]

DO NOT SCALE FROM DRAWING



THESE DRAWINGS AND SPECIFICATIONS ARE THE PROPERTY OF NorComp AND SHALL NOT BE REPRODUCED, COPIED OR USED AS THE BASIS FOR THE MANUFACTURE OF SALE OF APPARATUS WITHOUT WRITTEN PERMISSION.

DRAWN: PAM JENKINS		DATE: 7-19-05	
SCALE: NTS	SHEET 1	OF 2	REV 19
DWG NO. 180-YYY-27YLYY0			

RoHS COMPLIANT

NorComp

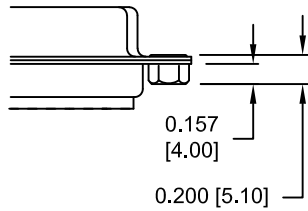
DESCRIPTION: CLINCH NUT HARDWARE

TOLERANCE:
ALL DIMENSIONS ARE ±0.010

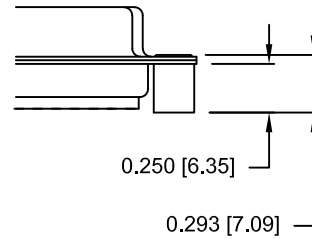
ALL CLINCH-NUTS ARE 4-40 INTERNAL THREADS

UNITS = inch[mm]

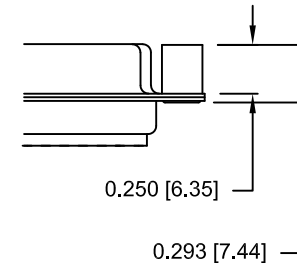
01X 0.157" (BOARD SIDE)



02X 0.250" (BOARD SIDE)



03X..... 0.250" (MATING SIDE)



DO NOT SCALE FROM DRAWING



THESE DRAWINGS AND SPECIFICATIONS ARE THE PROPERTY OF NorComp AND SHALL NOT BE REPRODUCED, COPIED OR USED AS THE BASIS FOR THE MANUFACTURE OF SALE OF APPARATUS WITHOUT WRITTEN PERMISSION.

DRAWN:
PAM JENKINS

DATE:
7-19-05

NorComp

SCALE: NTS SHEET 2 OF 2 REV 19

DWG NO. 180-YYY-27YLYY0

RoHS COMPLIANT