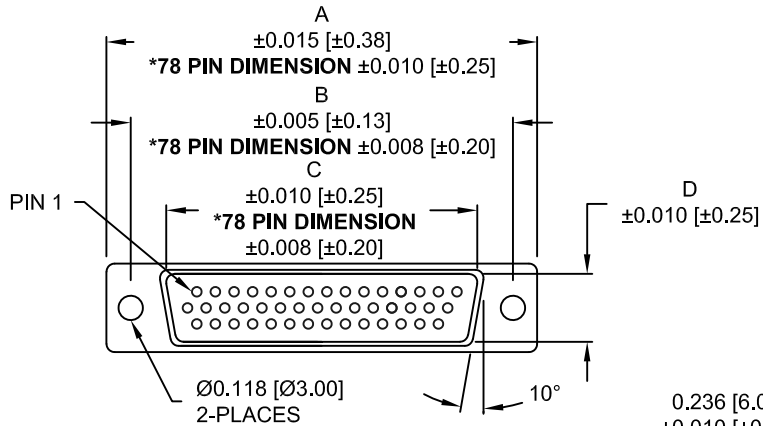


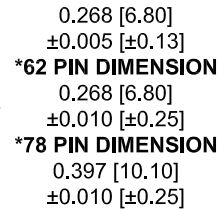
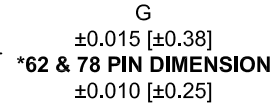
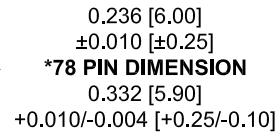
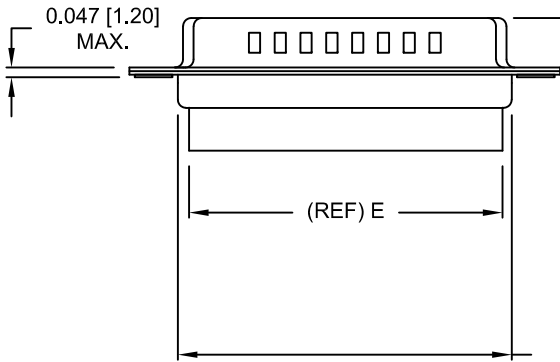
DESCRIPTION: MALE - CRIMP AND LOAD

****NOTE: CONTACTS MUST BE PURCHASED SEPARATELY****



4 ROWS

No. OF PINS	DIMENSIONS							
	A	B	C	D	E	F	G	H
15	1.213	0.984	0.666	0.323	0.610	0.759	0.494	0.421
	30.81	24.99	16.92	8.20	15.50	19.28	12.55	10.70
26	1.541	1.312	0.994	0.323	0.964	1.083	0.494	0.421
	39.14	33.32	25.25	8.20	24.50	27.51	12.55	10.70
44	2.088	1.852	1.534	0.323	1.494	1.618	0.494	0.421
	53.04	47.04	38.96	8.20	37.95	41.10	12.55	10.70
62	2.729	2.500	2.182	0.319	2.142	2.272	0.494	0.421
	69.32	63.50	55.42	8.10	54.40	57.71	12.55	10.70
78	2.644	2.406	2.081	0.439	2.035	2.169	0.605	0.527
	67.16	61.11	52.86	11.15	51.70	55.10	15.37	13.40



180-YYY-17YLYY0

SERIES _____
 POSITIONS _____
 015 _____
 026 _____
 044 _____
 062 _____
 078 _____
 GENDER _____
 1 = MALE _____
 TERMINATION _____
 7 = CRIMP & LOAD _____
 SHELL PLATING _____
 2 = TIN (GROUND INDENTS) _____
 3 = NICKEL (GROUND INDENTS) _____
 RoHS COMPLIANT (230°C) _____
 HARDWARE OPTIONS _____
 00 = NO HARDWARE _____
 01 = .157" CLINCH NUT (BOARD SIDE) _____
 02 = .250" CLINCH NUT (BOARD SIDE) _____
 03 = .250" CLINCH NUT (MATING SIDE) _____
 PLATING OPTIONS _____
 0 = NO CONTACTS _____

MATERIAL:

SHELL: STEEL, TIN OR NICKEL PLATED
 INSULATOR: PBT, UL 94V-O RATED,
 +30% FIBER-GLASS

ELECTRICAL:

INSULATION RESISTANCE: 1,000 MOhms MIN.
 VOLTAGE: 500VAC FOR 1 MINUTE
 TEMPERATURE: -50° C TO 100° C

UNITS = inch[mm]

DO NOT SCALE FROM DRAWING



THESE DRAWINGS AND SPECIFICATIONS ARE THE PROPERTY OF NorComp AND SHALL NOT BE REPRODUCED, COPIED OR USED AS THE BASIS FOR THE MANUFACTURE OF SALE OF APPARATUS WITHOUT WRITTEN PERMISSION.

DRAWN: J KADEL		DATE: 07-16-18	
SCALE: NTS	SHEET 1 OF 2	REV 21	
DWG NO. 180-YYY-17YLYY0			

RoHS COMPLIANT

NorComp

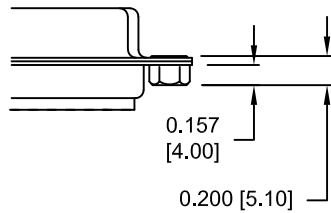
DESCRIPTION: CLINCH NUT HARDWARE

ALL CLINCH-NUTS ARE 4-40 INTERNAL THREADS

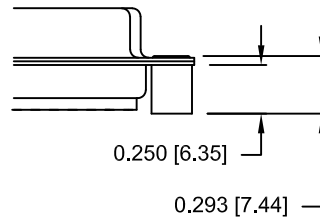
UNITS = inch[mm]

TOLERANCE:
ALL DIMENSIONS ARE ±0.010

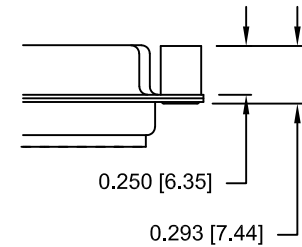
01X 0.157" (BOARD SIDE)



02X 0.250" (BOARD SIDE)



03X..... 0.250" (MATING SIDE)



DO NOT SCALE FROM DRAWING



THESE DRAWINGS AND SPECIFICATIONS ARE THE PROPERTY OF NorComp AND SHALL NOT BE REPRODUCED, COPIED OR USED AS THE BASIS FOR THE MANUFACTURE OF SALE OF APPARATUS WITHOUT WRITTEN PERMISSION.

DRAWN:
J KADEL

DATE:
07-16-18

NorComp

SCALE: NTS SHEET 2 OF 2 REV 21

DWG NO. 180-YYY-17YLYY0

RoHS COMPLIANT