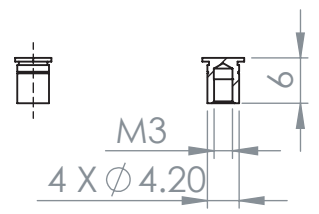
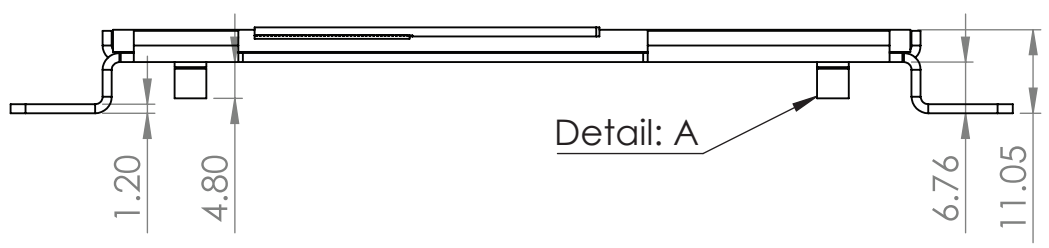
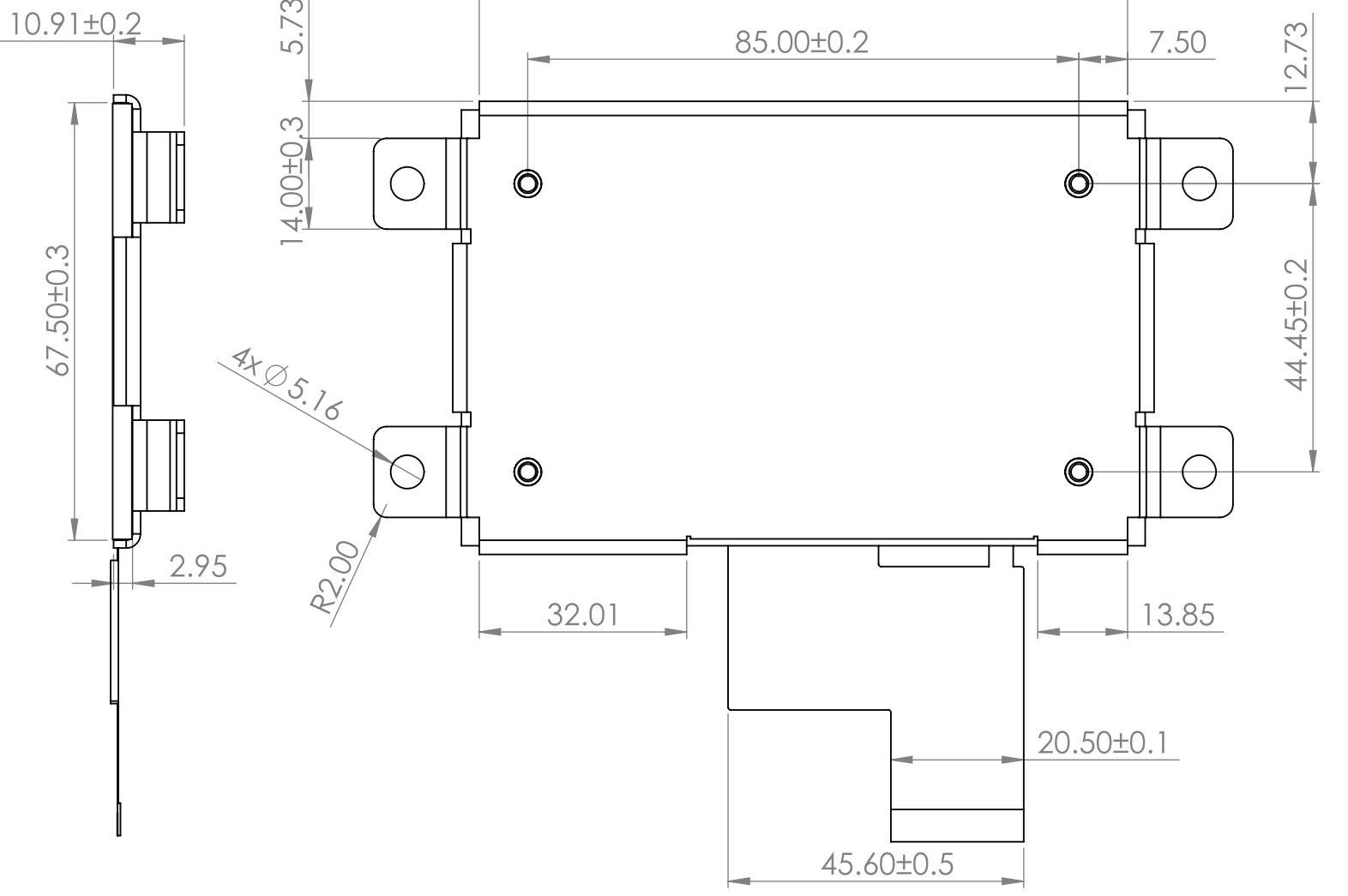
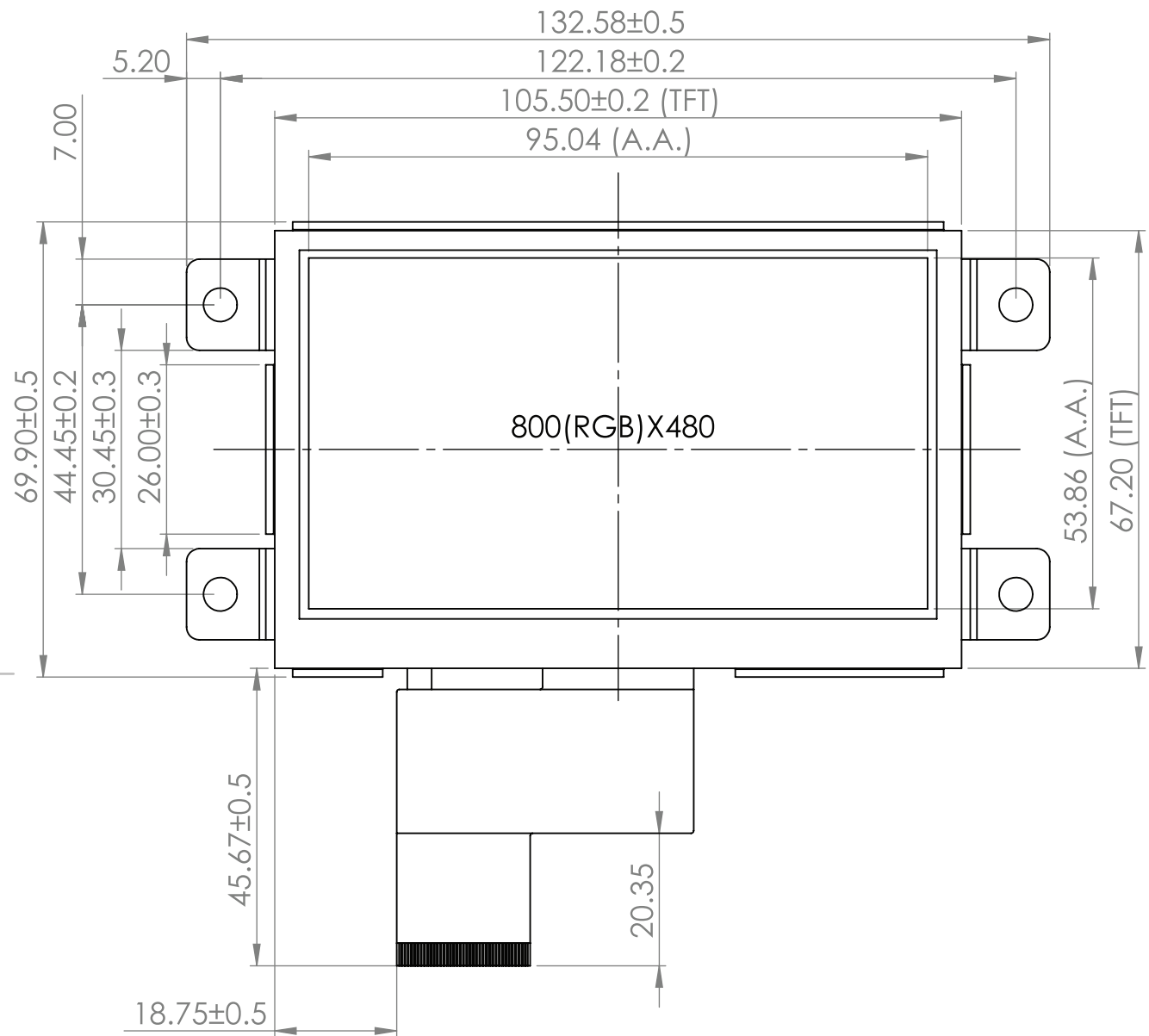


SYMBOL	REVISION	DATE



Detail: A
1:1
Part# BS04-M3-6 or Equivalent

- NOTES (Mounting Bracket):
- MATERIAL: SGLCC
 - THICKNESS: 1.2mm
 - 4x Mounting Holes, compatible with Rack Unit (RU) spacing
 - 4x Blind Threaded Standoffs (M3) on back side, suitable for Custom PCB assembly

This drawing is for mechanical mounting information only. Detailed display specifications can be viewed by downloading the full datasheet for the appropriate 4.3" TFT, accessible by the link below:

<http://www.newhavendisplay.com/specs/NHD-4.3-800480CF-ASXP.pdf>

STANDARD TOLERANCE: (UNLESS OTHERWISE SPECIFIED)			REVISION: -
LINEAR: ±0.3mm	DRAWING/PART NUMBER: NHD-4.3-800480MB-ASXP		SIZE: A3
UNLESS OTHERWISE SPECIFIED: - DIMENSIONS ARE IN MILLIMETERS - THIRD ANGLE PROJECTION	DRAWN BY: P.Keshavarzi	APPROVED BY: P. Bartek	SCALE: 1:1
	DRAWN DATE: 11/21/19	APPROVED DATE: 11/25/19	SHEET 1 OF 1
DO NOT SCALE DRAWING			
THIS DRAWING IS SOLELY THE PROPERTY OF NEWHAVEN DISPLAY INTERNATIONAL, INC. THE INFORMATION IT CONTAINS IS NOT TO BE DISCLOSED, REPRODUCED OR COPIED IN WHOLE OR PART WITHOUT WRITTEN APPROVAL FROM NEWHAVEN DISPLAY.			