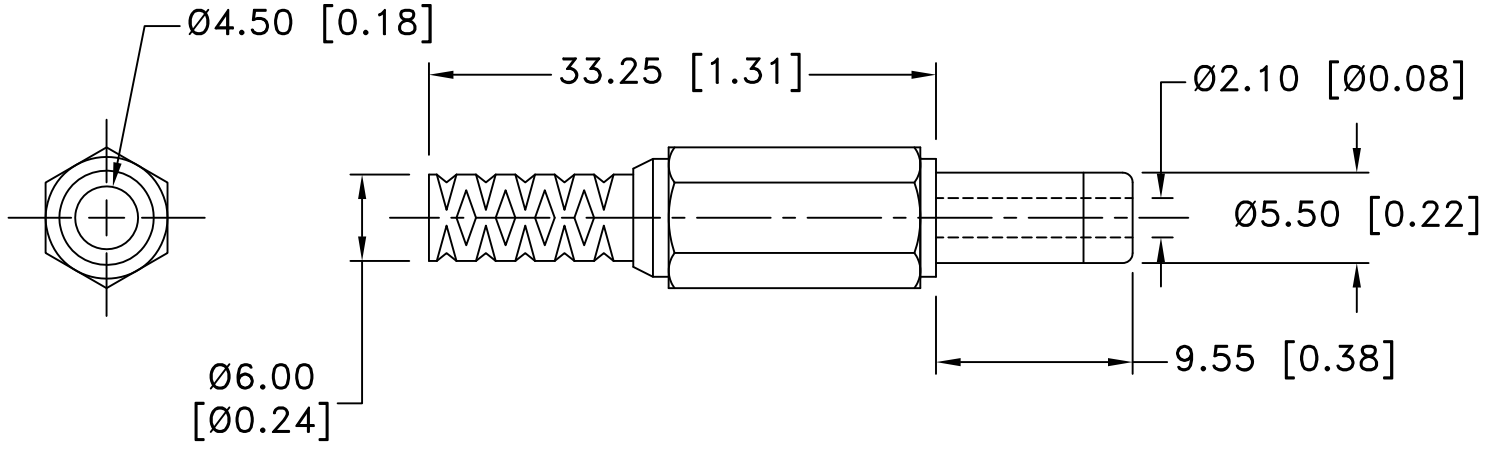



Date	SYM	REVISION RECORD	AUTH	DR.	CK.
12/12/14	A	REDRAWN IN AUTOCAD UPDATED TO ROHS 2 COMPLIANT	T.B.	B.S.	
08/14/15	B	UPDATED NOTES	T.B.	B.S.	
08/21/15	C	DIM. 4.50 WAS 4.0 DIM. 6.0 WAS 5.50 REMOVED DIM. 45.40, 18.50, 13.10 ADDED DIM. 33.25	T.B.	B.S.	



NOTES:  
 MAX. RATING: 12V 5A.  
 MATERIAL:  
 1) INSULATOR: ABS  
 2) PLUG: BRASS, NICKEL PLATED  
 3) COVER: PP  
 DIELECTRIC STRENGTH: AC 500C/1MIN.  
 INSULATION RESISTANCE: DC 500V/100MΩ  
 ROHS 2 COMPLIANT

Tolerance (Except as noted)	 <b>Memory Protection Devices, Inc</b> 200 Broad Hollow Road, Farmingdale, New York 11735		
	decimal ±.5 (.020)	Scale	Drawn By B.S. Approved By T.B.
Fractional ± .8 (.030)	Title DC PLUG- 2.1mm MOLDED WITH STRAIN RELIEF		
Angular ± 3°	Date 08/21/15	Drawing Number EP501-A	