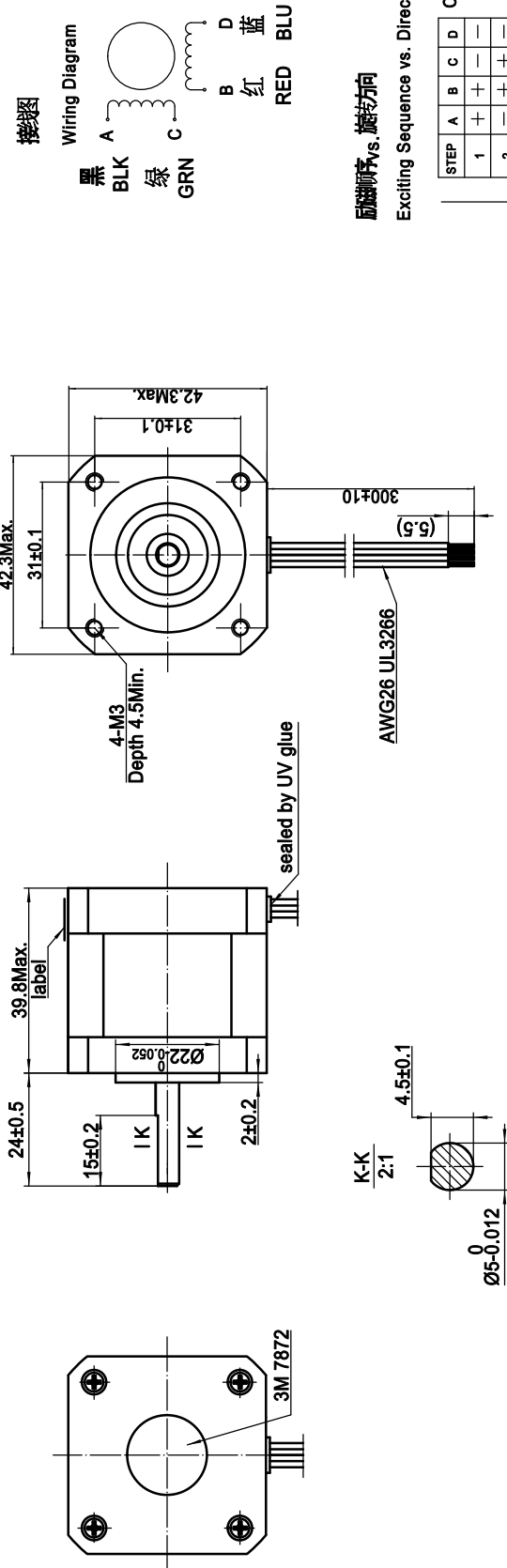
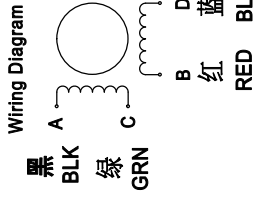


4611110029544



接线图



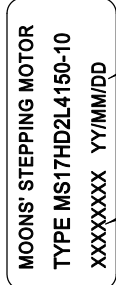
励磁顺序 vs. 旋转方向

Exciting Sequence vs. Direction of Rotation

STEP	A	B	C	D	
1	+	+	-	-	CCW 从安装面为顺时针方向
2	-	+	+	-	
3	-	-	+	+	
4	+	-	-	+	

Clockwise view from mounting side

铭牌 Label Detail



* 备注 Comment
1. Moons' 防腐蚀设计: Moons' anti-corrosion design.

规格 Specifications

1. 相数 Number of Phase	2
2. 步距角 Step Angle	1.8°
3. 额定电压 Rated Voltage	3.15 V DC
4. 额定电流 Rated Current	1.5 Amp
5. 保持转矩 Holding Torque	0.5 Nm Typ. (Two phase on/rated current)
6. 相阻 Phase Resistance	2.1 ohm±10%(20°C)
7. 相电感 Phase Inductance	4.3 mH±20%(1kHz 1V rms)
8. 转子惯量 Rotor Inertia	57 gcm ²
9. 电机重量 Motor Weight	0.28 kg
10. 绝缘等级 Insulation Class	B(130°C)

Unit: mm
第一角画法
FIRST ANGLE METHOD
公差标注与遵守公差
Tolerance and dimension without individual tolerance indication
GB/T 1804-p1 eqv ISO 2768-1Dm
未注线性公差均按 GB/T 1804-K eqv ISO 2768-2Dk
Geometrical tolerance for features without individual tolerance indication
GB/T 1804-K eqv ISO 2768-2Dk

批准 Approve
标准 Standard
工艺 Technology
审核 Check
设计 Design

马一
2018.07.06
DATE

MOONS'
Shanghai Moons' Electric Co., Ltd.

Hybrid Stepping Motor

This document is released for information only. Its reproduction in whole or in part or its dissemination to third parties is prohibited. All trademarks and registered trademarks appearing on this document are the property of their respective owners.

REV.	原版本 REVISION RECORD	DATE	DATE	NAMES	SIGNATURE	DATE	Rev.A	SCALE 1:1	Sheet 1 of 1
1		2018.07.06		马一		2018.07.06	6	7	8