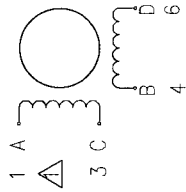


4611110010442

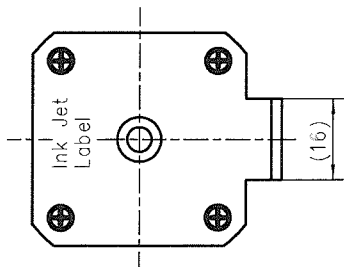
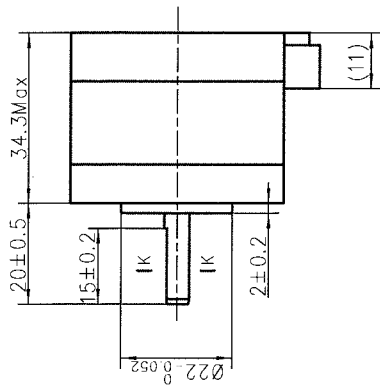
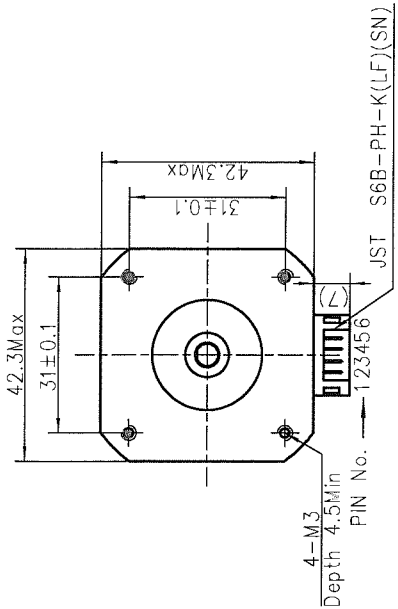
接线图
Wiring Diagram



励磁顺序 vs. 旋转方向
Exciting Sequence vs.
Direction of Rotation

STEP	A	B	C	D	
1	+	+	-	-	CW
2	-	+	+	-	
3	-	-	+	+	CCW
4	+	-	-	+	

从安装面看为顺时针方向
Clockwise view from
mounting side



规格 Specifications

1. 相数 Number of Phase	2
2. 步距角 Step Angle	1.8°
3. 额定电压 Rated Voltage	4.83 V DC
4. 额定电流 Rated Current	0.84 A
5. 保持力矩 Holding Torque	0.28 N.m MIN(Two phase on/rated current)
6. 相电阻 Phase Resistance	5.75 ohm±10%(20°C)
7. 相电感 Phase Inductance	9.3 mH±20%(1kHz 1V rms)
8. 转子惯量 Rotor Inertia	35g.cm ²
9. 电机重量 Motor Weight	0.23kg
10. 绝缘等级 Insulation Class	B(130°C)

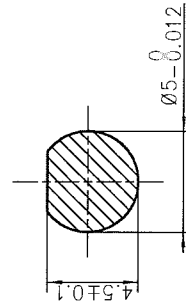
铭牌 Label Detail



MOONS' STEPPING MOTOR
TYPE 17HD4063-04N
XXXXXXX YY/MM/DD

Work Order 加工单号
Date Format 日期格式

K-K
4:1



REV.	REVISION RECORD	DATE	UNLESS OTHERWISE SPECIFIED	NAMES	SIGNATURE	DATE	Type: 17HD4063-04N	Rev.B	SCALE 1:1	Sheet 1 of 1
B	取消线束注颜色	13.09.01	Unit: mm 第一角画法 ME1003 本法规性文件与公差 Substrate for linear and angular dimensions without individual tolerance indications GB/T 1804-m eqv ISO 2768-1:m 本图形状与位置公差 Geometrical Tolerancing for features without individual tolerance indications GB/T 1184-K eqv ISO 2768-2:K	批准 Approve 标准化 Standard 工艺 Technology 审核 Check 设计 Design	13.9.2 9.2 13.9.3 9.3 樊峰涛	13.9.2 9.2 13.9.3 9.3	Hybrid Stepping Motor	MOONS'	Shanghai Moons' Electric Co., Ltd.	8
A	原始版本 Original revision	2012.07.25								