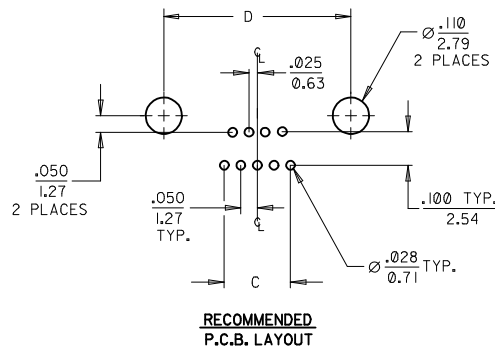
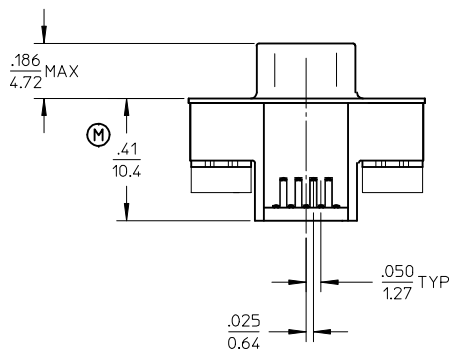
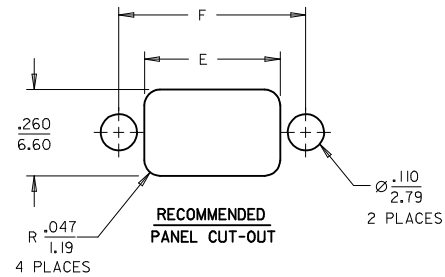
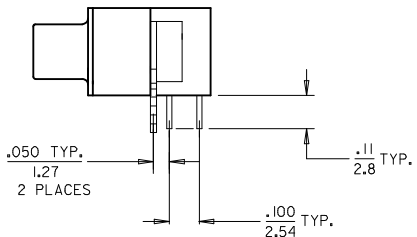
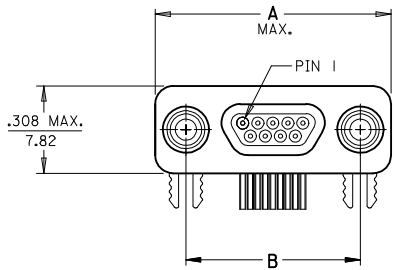


MATERIAL NO.	ENG. NO.	SIZE	A MAX.	B	C	D	E	F
836119016	83611-9016	9	.783/19.93	.565/14.35	.200/5.08	.565/14.35	.410/10.41	.565/14.35
836129022	83612-9022	15	.933/23.75	.715/18.16	.350/8.88	.715/18.16	.560/14.22	.715/18.16
836149014	83614-9014	25	1.18530/10	.965/24.51	.600/15.23	.965/24.51	.810/20.57	.965/24.51



SIZE 9 SHOWN

SALES DRAWING

3. PART IS RoHS COMPLIANT
 2. MARKING: NONE.
 1. REFER TO PS-83421-9000 FOR PRODUCT SPECIFICATION.
NOTES: UNLESS OTHERWISE SPECIFIED.

DIM WAS 49/125 EC NO: WNA2009-0728 DRWNR: RUPERT CHKD: BRUPERT APPR: JFURPHY	DESCRIPTION 2009/06/03	QUALITY SYMBOLS	GENERAL TOLERANCES (UNLESS SPECIFIED)	DIMENSION STYLE	SCALE	DESIGN UNITS	THIRD ANGLE PROJECTION	
		$\nabla=0$ $\nabla=0$	mm INCH 4 PLACES ± --- ± --- 3 PLACES ± --- ± .010 2 PLACES ± 0.25 ± .01 1 PLACE ± 0.25 ± --- ANGULAR ± 1/2°	IN/MM	INCH	INCH	TITLE CONNECTOR SUB-ASSEMBLY RIGHT ANGLE PLUG WITHOUT JACKPOSTS SIZE 9-15-25	
							MOLEX INCORPORATED DOCUMENT NO. SD-83611-002	SHEET NO. 1 OF 1
							THIS DRAWING CONTAINS INFORMATION THAT IS PROPRIETARY TO MOLEX INCORPORATED AND SHOULD NOT BE USED WITHOUT WRITTEN PERMISSION	