

FEATURES AND SPECIFICATIONS

Features and Benefits

- Sizes 2 to 28 circuits
- High performance flex life alloy prevents conductor fracture at solder joints
- Increased cable flexibility
- Tin topcoat provides easy PC board direct termination
- Bulk cable available on 100, 300 and 500' reels
- To order notched bulk cable, jumpers cut to length or complete assemblies, contact Molex

Reference Information

UL File No.: E61522
 UL Style No.: 2651
 Use With.: 30452 and [52484](#) IDT connectors
 Designed In: Millimeters

Electrical

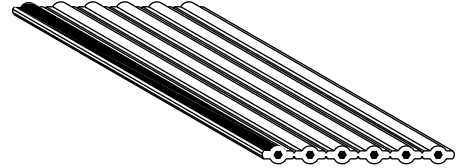
Voltage: 300V
 See Electrical Specifications Table
 on Page H-29 for More Information

Physical

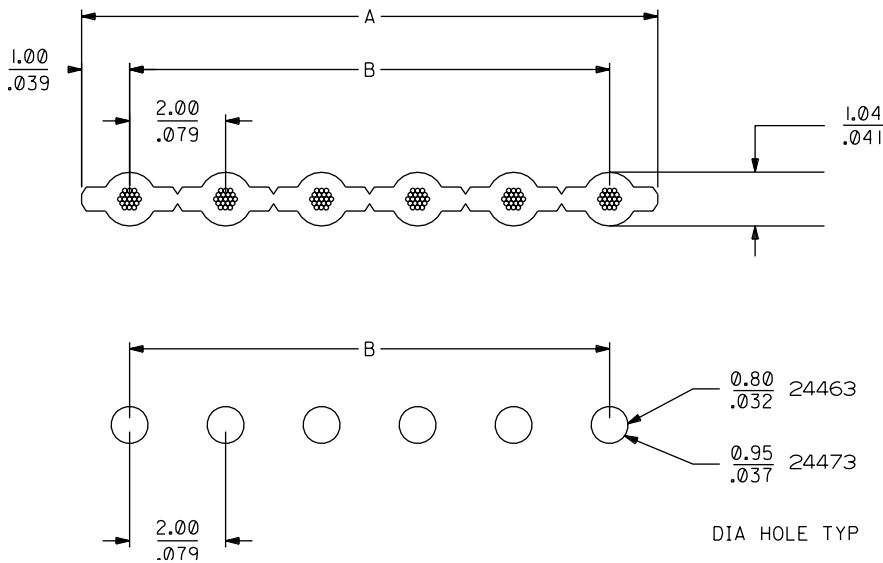
Flammability: VW-1
 Operating Temperature: -20 to +105°C
 Insulation: Dark gray PVC
 Edge Mark: Blue

molex® 2.00mm (.079") Pitch Flextran™ High Flex Life Cable

24463 26 AWG (19 x 38) Stranded, Topcoat
24473 24 AWG (19 x 36) Stranded, Topcoat



CATALOG DRAWING (FOR REFERENCE ONLY)



ORDERING INFORMATION AND DIMENSIONS

For Cable Series No.	Order No.		
	100' Reel	300' Reel	500' Reel
24463-XX	• 82-26-30XX	• 82-26-31XX	• 82-26-32XX
24473-XX	• 82-24-34XX	• 82-24-35XX	• 82-24-36XX

Replace "XX" with number of circuits, 02-28

Circuits	Dimension	
	A	B
2	4.00 (.157)	2.00 (.079)
3	6.00 (.236)	4.00 (.157)
4	8.00 (.315)	6.00 (.236)
5	10.00 (.394)	8.00 (.315)
6	12.00 (.472)	10.00 (.394)
7	14.00 (.551)	12.00 (.472)
8	16.00 (.630)	14.00 (.551)
9	18.00 (.709)	16.00 (.630)
10	20.00 (.787)	18.00 (.709)
11	22.00 (.866)	20.00 (.787)
12	24.00 (.945)	22.00 (.866)

Circuits	Dimension	
	A	B
13	26.00 (1.024)	24.00 (.945)
14	28.00 (1.102)	26.00 (1.024)
15	30.00 (1.181)	28.00 (1.102)
16	32.00 (1.260)	30.00 (1.181)
17	34.00 (1.339)	32.00 (1.260)
18	36.00 (1.417)	34.00 (1.339)
19	38.00 (1.496)	36.00 (1.417)
20	40.00 (1.575)	38.00 (1.496)
21	42.00 (1.654)	40.00 (1.929)
22	44.00 (1.732)	42.00 (1.654)
23	46.00 (1.811)	44.00 (1.732)
24	48.00 (1.890)	46.00 (1.811)
25	50.00 (1.969)	48.00 (1.890)
26	52.00 (2.047)	50.00 (1.969)
27	54.00 (2.126)	52.00 (2.047)
28	56.00 (2.205)	54.00 (2.126)

• US Standard Product, available through Molex franchised distributors