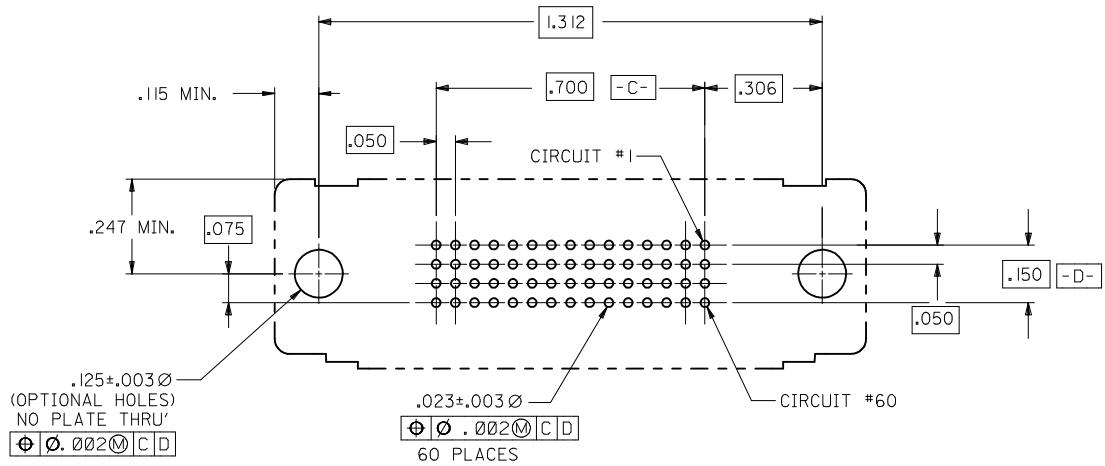


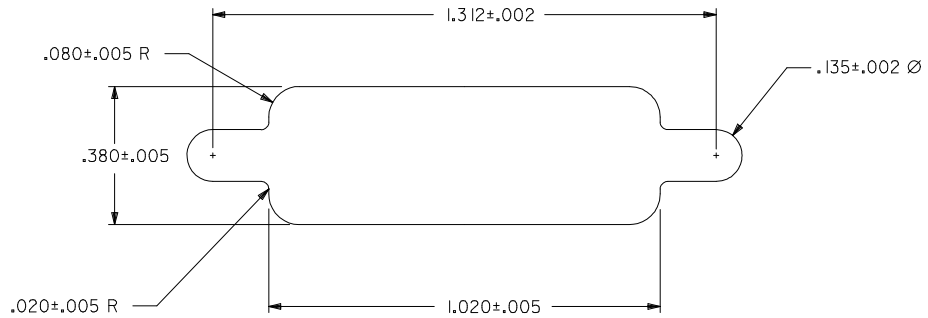
- NOTES:
- 1) MATERIALS:
 - HOUSING: GLASS FILLED LCP (LIQUID CRYSTAL POLYMER), UL 94V-0, COLOR: BLACK.
 - MOLDED STICK: GLASS FILLED LCP (LIQUID CRYSTAL POLYMER), UL 94V-0, COLOR: BLACK.
 - FEMALE TERMINAL: HIGH PERFORMANCE COPPER ALLOY
 - OUTER SHELL: DEEP DRAWN STEEL.
 - 2) PLATING :
 - TERMINAL: 30 microinches / 0.76 micrometer MIN. GOLD IN SELECTIVE AREA, 100 microinches / 2.54 micrometer MIN. TIN IN SELECTIVE AREA, OVER NICKEL UNDERPLATE OVERALL.
 - OUTER SHELL: 100 microinches / 2.54 MIN. BRIGHT NICKEL OVER COPPER FLASH (OPTIONAL)
 - 3) CONFORMS TO PRODUCT SPECIFICATION PS-70928.
 - 4) PARTS PACKAGED PK-70873-0291.
 - 5) THREAD GAUGE MAY REQUIRE UP TO 1 IN.-LB. OF TORQUE DURING GAUGING PROCESS.
 - 6) PART COMPLIES WITH CLASS B OF COSMETIC SPECIFICATION PS-45499-002

SECTION X-X

REVISE NOTES EC NO: UCP2010-0117 TIDRWNSDANIELLEY 2009/07/23 CHKDDMORGAN 2009/07/24 APPR:SMILLER 2009/07/24	QUALITY SYMBOLS ▽=0 ▽=0	GENERAL TOLERANCES (UNLESS SPECIFIED)		DIMENSION STYLE INCH ONLY		SCALE 4:1	DESIGN UNITS INCH	THIRD ANGLE PROJECTION			
		4 PLACES ± --- ± ---	3 PLACES ± --- ± .010	2 PLACES ± --- ± ---	1 PLACE ± --- ± ---	DRAWN BY MOS 1993/12/07	CHECKED BY MOS 1993/12/07	TITLE .050 PITCH CKT LFH VERTICAL I/O - M3 SHIELD RECEPTACLE			
		ANGULAR ±1/2°				APPROVED BY CAB 1993/12/07	MATERIAL NO. 70928-0002				
		DRAFT WHERE APPLICABLE MUST REMAIN WITHIN DIMENSIONS				SIZE C	DOCUMENT NO. SDA-70928-0002				
						THIS DRAWING CONTAINS INFORMATION THAT IS PROPRIETARY TO MOLEX INCORPORATED AND SHOULD NOT BE USED WITHOUT WRITTEN PERMISSION					

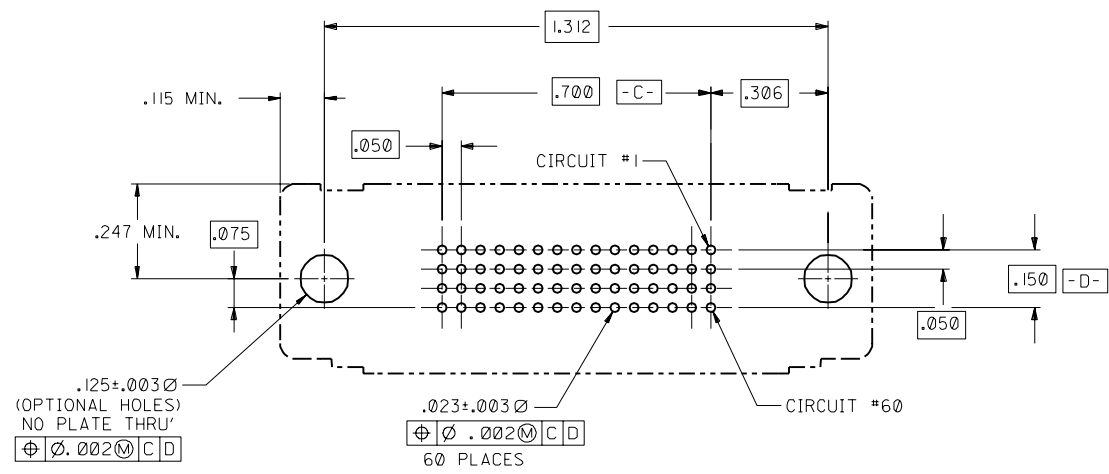


RECOMMENDED P.C.B. LAYOUT
COMPONENT SIDE

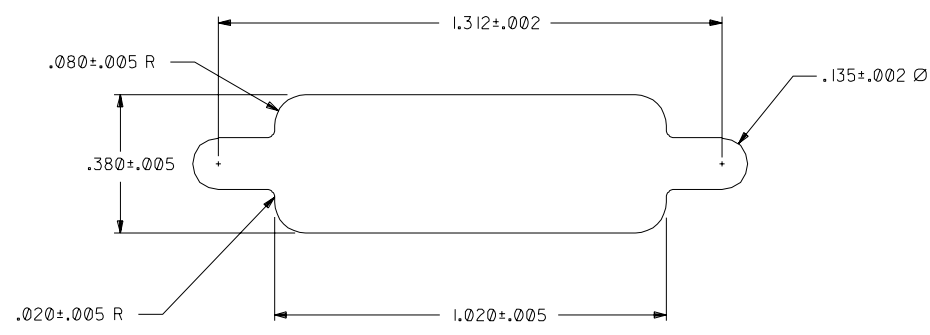


RECOMMENDED PANEL CUT-OUT

SEE SHEET 1 EC NO: UCP2010-0117 TDRWNSDANIELLEY 2009/07/23 CHKD:JORGAN 2009/07/24 APPR:SMILLER 2009/07/24	QUALITY SYMBOLS ▽=0 ▽=0	GENERAL TOLERANCES (UNLESS SPECIFIED)		DIMENSION STYLE INCH ONLY		SCALE 4:1	DESIGN UNITS INCH	THIRD ANGLE PROJECTION		
		mm INCH	DRAWN BY MOS	DATE 1993/12/07	TITLE .050 PITCH CKT LFH VERTICAL I/O - M3 SHIELD RECEPTACLE					
		4 PLACES ± .005 ± .005 3 PLACES ± .005 ± .010 2 PLACES ± .005 ± .010 1 PLACE ± .005 ± .010	CHECKED BY MOS	DATE 1993/12/07	MOLEX INCORPORATED					
		ANGULAR ± 1/2°	APPROVED BY CAB	DATE 1993/12/07	MATERIAL NO. 70928-0002	DOCUMENT NO. SDA-70928-0002	SHEET NO. 2 OF 2			
DRAFT WHERE APPLICABLE MUST REMAIN WITHIN DIMENSIONS		THIS DRAWING CONTAINS INFORMATION THAT IS PROPRIETARY TO MOLEX INCORPORATED AND SHOULD NOT BE USED WITHOUT WRITTEN PERMISSION								



RECOMMENDED P.C.B. LAYOUT
COMPONENT SIDE



RECOMMENDED PANEL CUT-OUT

C	SEE SHEET I
B	SEE SHEET I
A	SEE SHEET I

DIMENSIONS SHOWN (METRIC) INCH		▽ = 0		▼ = 0		REVISE ONLY ON CAD SYSTEM	
UNLESS OTHERWISE SPECIFIED TOLERANCES ANGULAR ± 1/2°							
3 PLACE ± .010		INCH		METRIC		---	
2 PLACE ±		±		±		---	
1 PLACE ---		---		±		---	
DRAFT WHERE APPLICABLE MUST REMAIN WITHIN DIMENSIONS							
DRWG. BY: MOS	CHK'D. BY: MOS	FILE NAME: S7092811A	SCALE: 4:1	PART NO. 70928-0002		SHEET NO. 2	DATE 4/14/94
APP'D. BY: GWF	SCALE: 4:1	MFG. SH. 60532		U.S.A.		DIV. CD	
THIS DRAWING CONTAINS INFORMATION THAT IS PROPRIETARY TO MOLEX INC. AND SHOULD NOT BE USED WITHOUT WRITTEN PERMISSION.							

70928

C

D

B

A