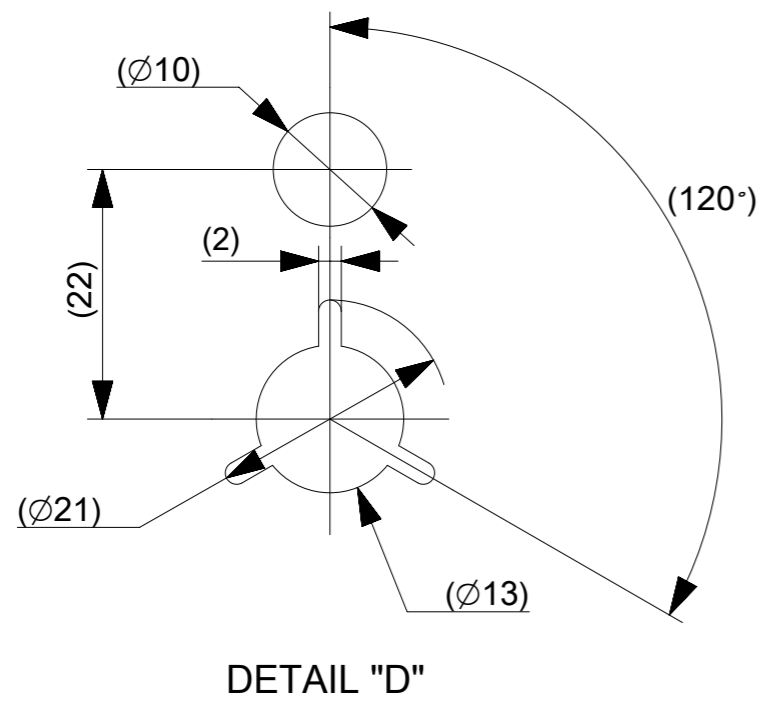
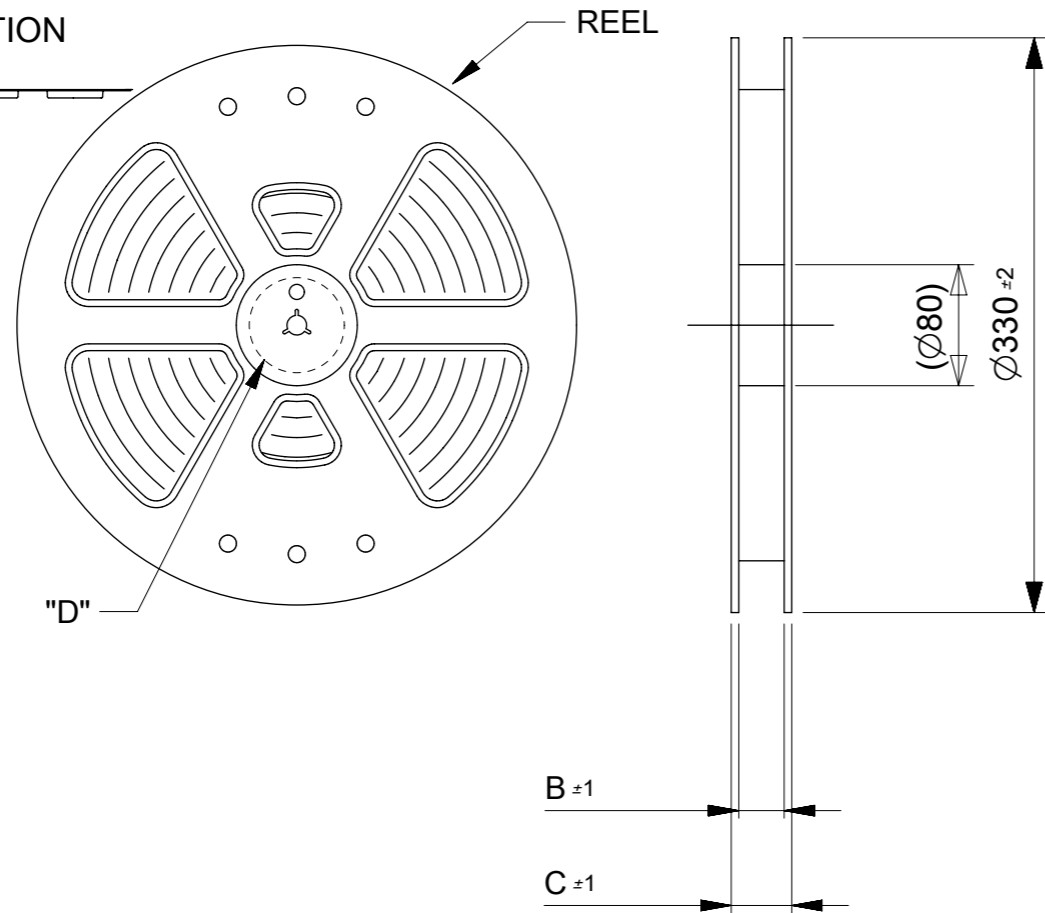
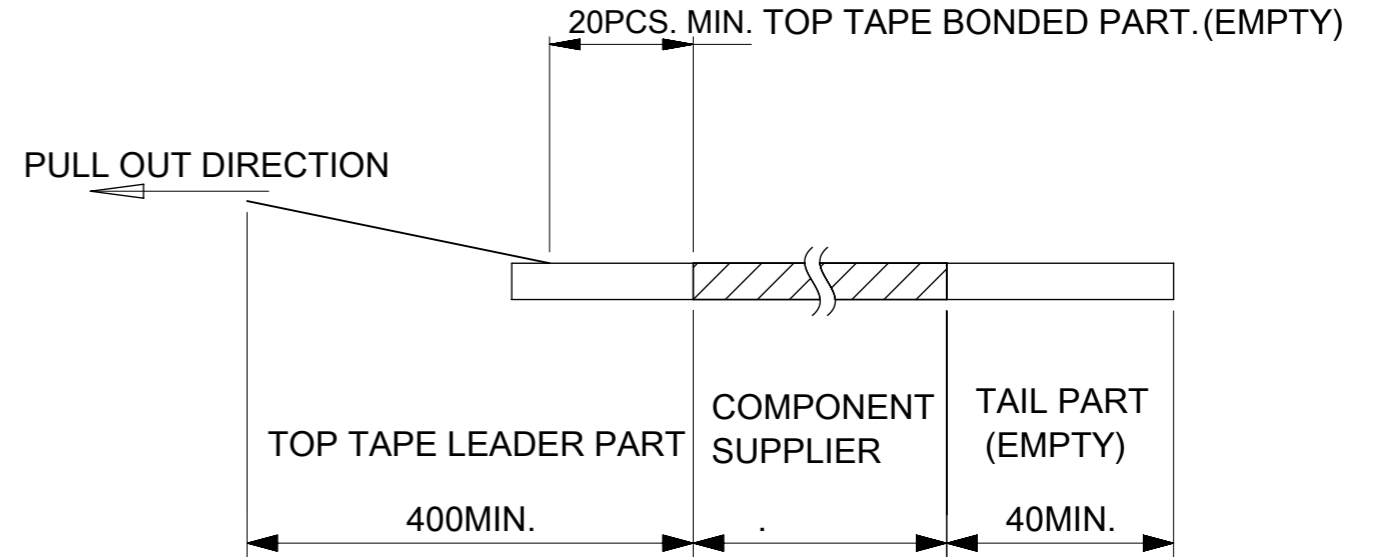


PULL OUT DIRECTION



NOTES

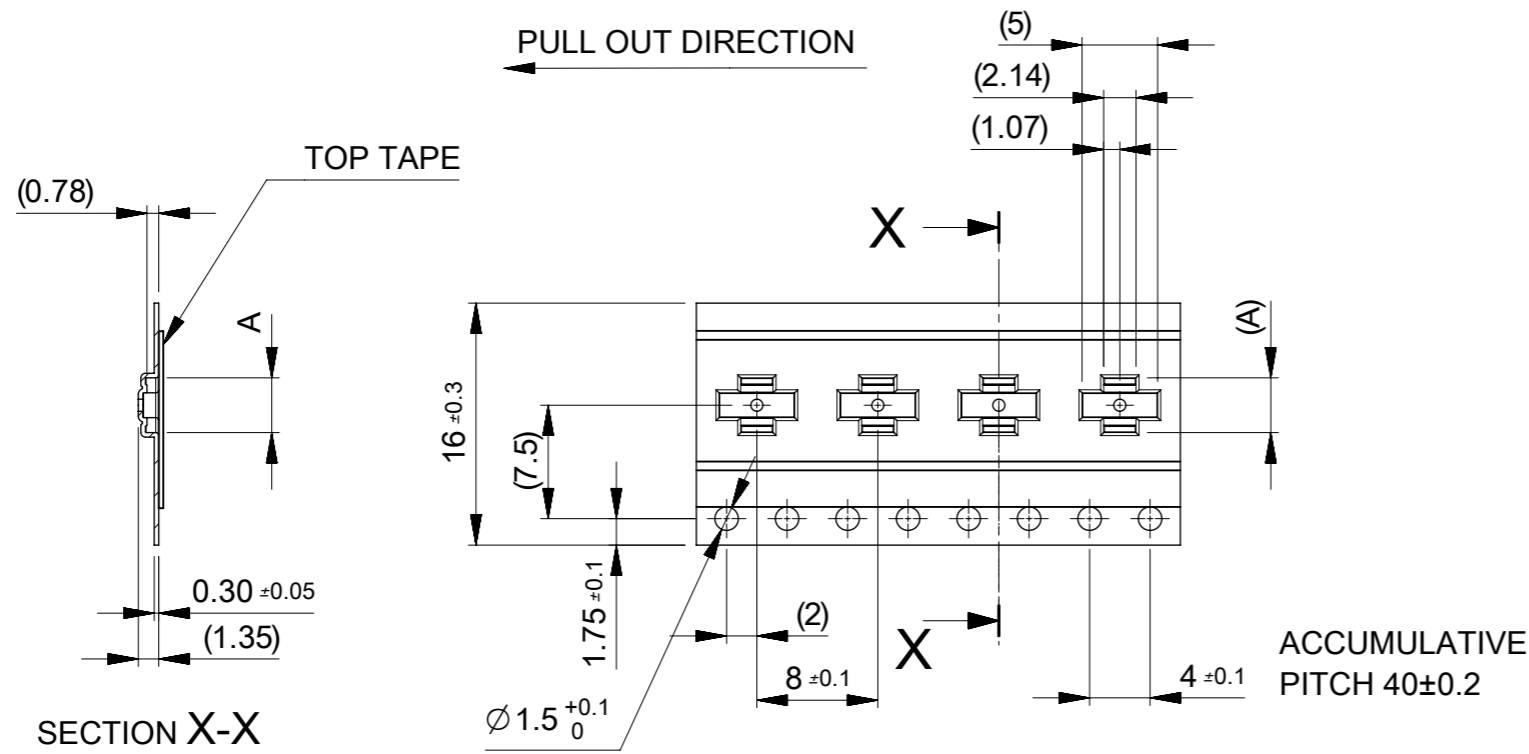
- RE DETAILED DIMENSION, SEE PRODUCT DRAWING.
- NUMBER OF CONNECTORS : 6000 PCS/REEL.
- LEAD TAPE LENGTH.



- TOP TAPE PEEL FORCE IS DEFINED BY IEC60286-3
- MATERIAL
CARRER TAPE :POLYSTYRENE
TOP TAPE :PET , OTHER
REEL :POLYSTYRENE(PS)(RECYCLE MATERIAL CONTAINED)
- ELV AND RoHS COMPLIANT

MODEL NO. 505066-**20

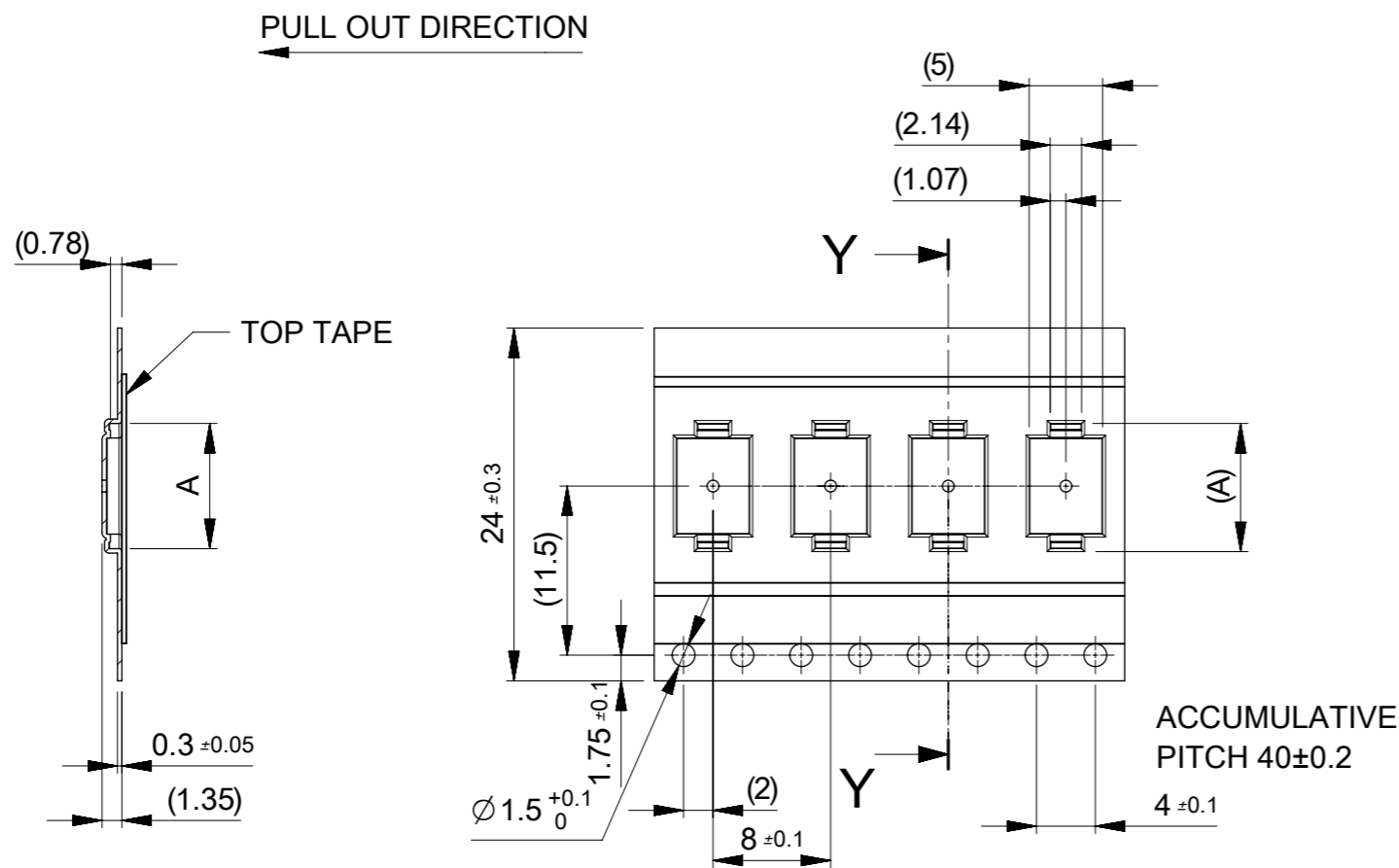
THIS DRAWING CONTAINS INFORMATION THAT IS PROPRIETARY TO MOLEX ELECTRONIC TECHNOLOGIES, LLC AND SHOULD NOT BE USED WITHOUT WRITTEN PERMISSION									
RELEASED	EC NO. 109660	2016/11/17	GENERAL TOLERANCES (UNLESS SPECIFIED)		DIMENSION UNITS	SCALE	molex [®]		
	DRWN: TSOMEYA	2016/12/01	ANGULAR TOL ± 1.0 °		MM	1:5			
	CHK'D: KTANAKA03	2016/12/01	4 PLACES	± 0.01	DRWN BY	DATE	PRODUCT CUSTOMER DRAWING		
	APPR: TKUSUHARA01	2016/12/01	3 PLACES	± 0.03	TSOMEYA	2016/11/17			
			2 PLACES	± 0.05	CHK'D BY	DATE	505066	SEE CHART	GENERAL
		1 PLACE	± 0.1	KTANAKA03	2016/12/01	DOCUMENT NUMBER DOC TYPE DOC PART SHEET NUMBER			
		0 PLACES	± 0.2	APPR BY	DATE				5050660000
A	REV	DRAFT WHERE APPLICABLE MUST REMAIN WITHIN DIMENSIONS		DRAWING SIZE	THIRD ANGLE PROJECTION				
				A3					



16	21.4	17.4	7.82	505066-3020	○	---	30
			6.77	505066-2420	○	---	24
			6.42	505066-2220	○	---	22
			6.07	505066-2020	○	---	20
			5.72	505066-1820	---	---	18
			5.37	505066-1620	○	---	16
			5.02	505066-1420	○	---	14
			4.67	505066-1220	○	---	12
			4.32	505066-1020	○	---	10
			3.97	505066-0820	---	○	8
3.62	505066-0620	○	---	6			
キャリアテープ幅 CARRIER TAPE WIDTH	C	B	(A)	MATERIAL No.	HIGH VOL. TOOL	LOW VOL. TOOL	CIRCUIT
					SAMPLE PREPARATION		

THIS DRAWING CONTAINS INFORMATION THAT IS PROPRIETARY TO MOLEX ELECTRONIC TECHNOLOGIES, LLC AND SHOULD NOT BE USED WITHOUT WRITTEN PERMISSION

EC NO: 109660 DRWN: TSOMEYA CHK'D: KTANAKA03 APPR: TKUSUHARA01	2016/11/17	GENERAL TOLERANCES (UNLESS SPECIFIED) ANGULAR TOL ± 1.0 ° 4 PLACES ± 0.01 3 PLACES ± 0.03 2 PLACES ± 0.05 1 PLACE ± 0.1 0 PLACES ± 0.2	DIMENSION UNITS	SCALE							
	RELEASED		MM	2:1							
	2016/12/01		DRWN BY	DATE		0.35 BB CONN. H=0.6 SSB6 RP REC ASSY					
	2016/12/01		TSOMEYA	2016/11/17							
	2016/12/01		KTANAKA03	2016/12/01							
2016/12/01	TKUSUHARA01	2016/12/01	PRODUCT CUSTOMER DRAWING								
EC NO: 109660	DRWN: TSOMEYA	CHK'D: KTANAKA03	APPR: TKUSUHARA01	DRAWING SIZE	THIRD ANGLE PROJECTION						
A	REV	DRAFT WHERE APPLICABLE MUST REMAIN WITHIN DIMENSIONS	A3	505066	SEE CHART	GENERAL					
RELEASE STATUS	P1	RELEASE DATE	01.12.2016 06:52:48	DOCUMENT NUMBER	5050660000	DOC TYPE	PSD	DOC PART	001	SHEET NUMBER	2 OF 3

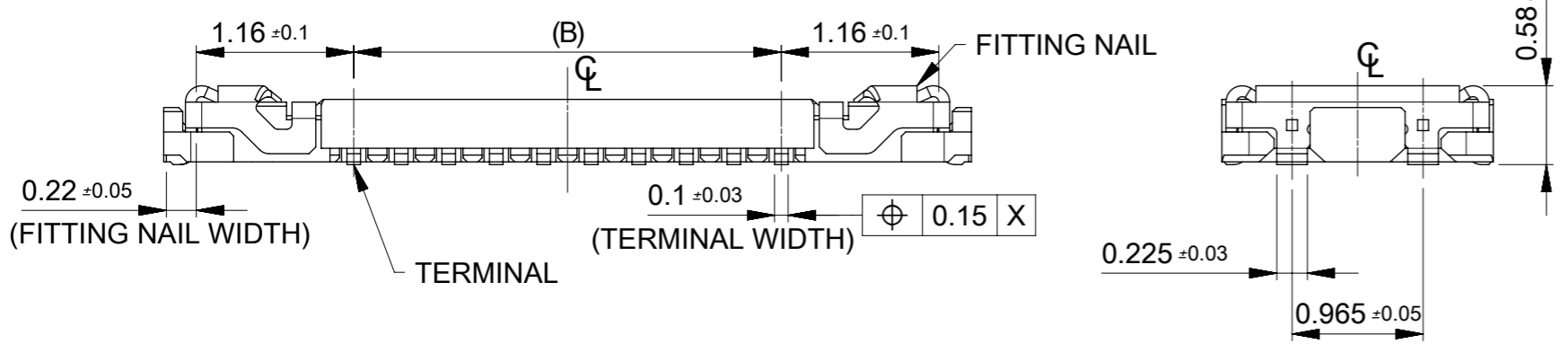
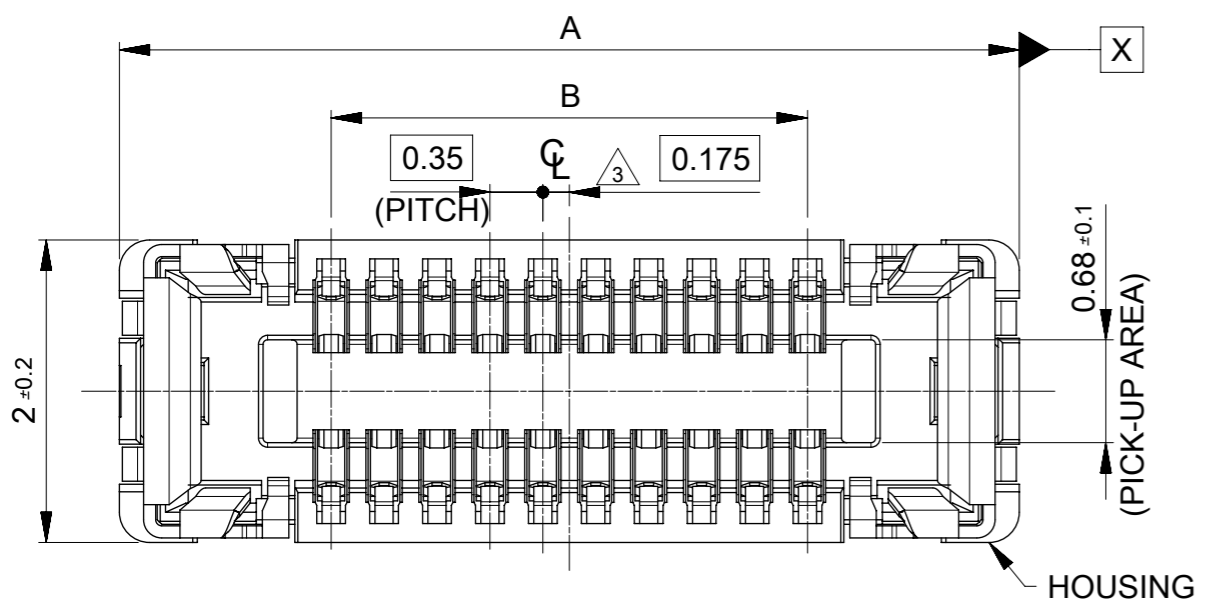


SECTION Y-Y

24	29.4	25.4	13.77	505066-6420	---	---	64	
			13.07	505066-6020	---	---	60	
			12.02	505066-5420	○	---	54	
			11.32	505066-5020	○	---	50	
			10.99	505066-4820	○	---	48	
			10.62	505066-4620	---	---	46	
			9.92	505066-4220	○	---	42	
			9.57	505066-4020	○	---	40	
			8.52	505066-3420	○	---	34	
キャリアテープ幅 CARRIER TAPE WIDTH		C	B	(A)	MATERIAL No.	HIGH VOL TOOL	LOW VOL TOOL	CIRCUIT
						SAMPLE PREPARATION		

THIS DRAWING CONTAINS INFORMATION THAT IS PROPRIETARY TO MOLEX ELECTRONIC TECHNOLOGIES, LLC AND SHOULD NOT BE USED WITHOUT WRITTEN PERMISSION

EC NO: 109660 DRWN: TSOMEYA CHK'D: KTANAKA03 APPR: TKUSUHARA01	2016/11/17	2016/12/01	2016/12/01	GENERAL TOLERANCES (UNLESS SPECIFIED) ANGULAR TOL ± 1.0 ° 4 PLACES ± 0.01 3 PLACES ± 0.03 2 PLACES ± 0.05 1 PLACE ± 0.1 0 PLACES ± 0.2	DIMENSION UNITS	SCALE		
	RELEASED	MM	2:1		DRWN BY	DATE		0.35 BB CONN. H=0.6 SSB6 RP REC ASSY
		TSOMEYA	2016/11/17		CHK'D BY	DATE		
		KTANAKA03	2016/12/01		APPR BY	DATE		PRODUCT CUSTOMER DRAWING
		TKUSUHARA01	2016/12/01		DRAWING SIZE	THIRD ANGLE PROJECTION		SERIES
	A3	3	505066	SEE CHART	GENERAL			
					DOCUMENT NUMBER	DOC TYPE	DOC PART	SHEET NUMBER
					5050660000	PSD	001	3 OF 3



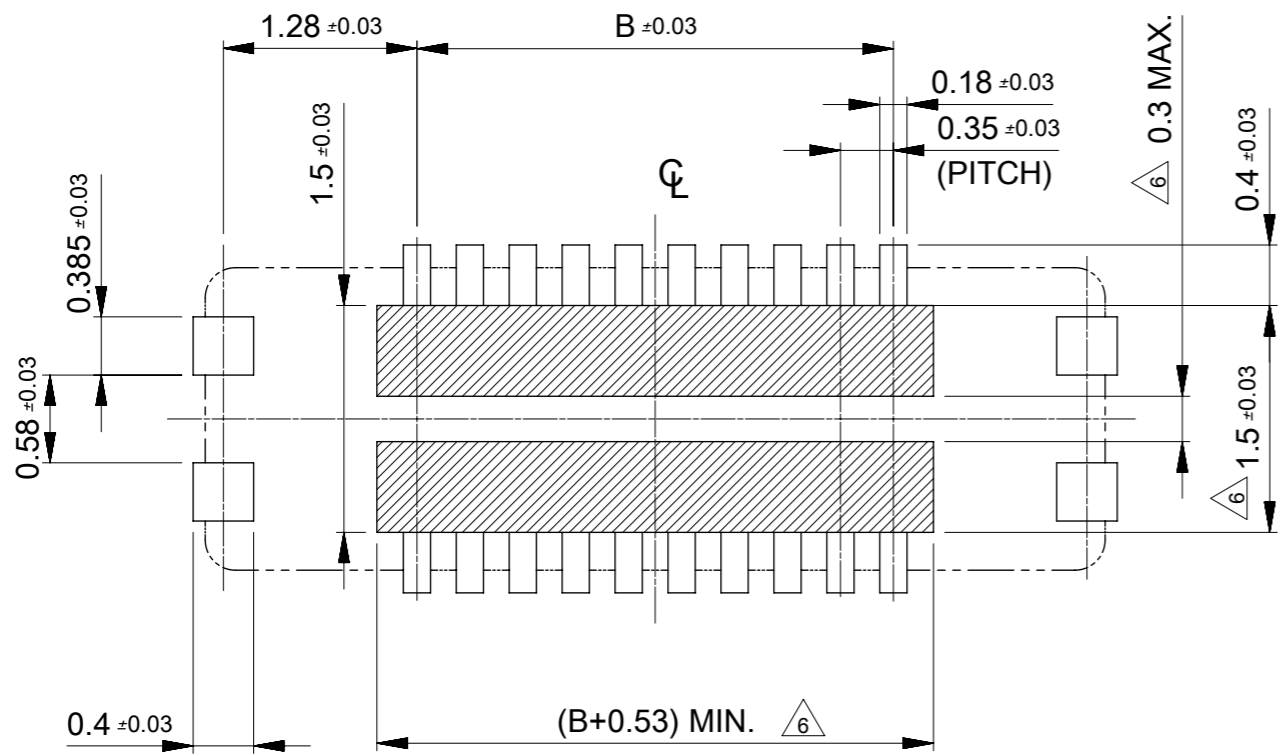
NOTES

- 1 MATERIAL
 WAFER: LIQUID CRYSTAL POLYMER UL94V-0 (COLOR: BLACK)
 TERMINAL: COPPER ALLOY
 FITTING NAIL: COPPER ALLOY
- 2 PLATING
 TERMINAL:
 CONTACT AREA: SEPARATED GOLD PLATING (0.1 MICROMETER MINIMUM).
 SOLDER TAIL AREA: SEPARATED GOLD PLATING.
 UNDERPLATE: NICKEL OVERALL.
 *DIVIDE INTO PARTS THE GOLD PLATING OF THE CONTACT AND THE TAIL PART BY THE NICKEL PLATING.
 FITTING NAIL:
 CONTACT AREA: SEPARATED GOLD PLATING (0.1 MICROMETER MINIMUM).
 SOLDER TAIL AREA: SEPARATED GOLD PLATING.
 UNDERPLATE: NICKEL OVERALL.
 *DIVIDE INTO PARTS THE GOLD PLATING OF THE CONTACT AND THE TAIL PART BY THE NICKEL PLATING.
 *EVEN THOUGH GOLD PLATING ON THE TOP SURFACE OF NAIL MIGHT BE THIN, NO FUNCTIONAL PROBLEM.
- 3 APPLY FOR (CIRCUIT/2)=EVEN.
- 4 MATE WITH : 505070-**10/505070-**20
- 5 TAIL AND FITTING NAIL COPLANARITY TO BE 0.08 MAXIMUM.
- 6 PROHIBITED AREA OF PATTERN WIRING AND SOLDER.
 (FOR EACH AREA, THE WIRING THAT TOUCHES ON THE SOLDER CAN BE ATTACHED, THEN COVERED WITH A FILM TO KEEP SOLDER OUT).
- 7 ELV and RoHS COMPLIANT.

11.90	14.70	505066-7020	---	---	70
10.85	13.65	505066-6420	---	---	64
10.15	12.95	505066-6020	---	---	60
9.80	12.60	505066-5820	---	---	58
9.10	11.90	505066-5420	○	---	54
8.40	11.20	505066-5020	○	---	50
8.05	10.85	505066-4820	○	---	48
7.70	10.50	505066-4620	---	---	46
7.00	9.80	505066-4220	○	---	42
6.65	9.45	505066-4020	○	---	40
6.30	9.10	505066-3820	---	---	38
5.60	8.40	505066-3420	○	---	34
4.90	7.70	505066-3020	○	---	30
3.85	6.65	505066-2420	○	---	24
3.50	6.30	505066-2220	○	---	22
3.15	5.95	505066-2020	○	---	20
2.80	5.60	505066-1820	---	---	18
2.45	5.25	505066-1620	○	---	16
2.10	4.90	505066-1420	○	---	14
1.75	4.55	505066-1220	○	---	12
1.40	4.20	505066-1020	○	---	10
1.05	3.85	505066-0820	---	○	8
0.70	3.50	505066-0620	○	---	6
B	A	EMBOSSED TAPE PACKAGE	HIGH VOL. TOOL	LOW VOL. TOOL	CIRCUIT
		ORDER NO.	SAMPLE PREPARATION ○ : TOOLED △ : WORK IN PROCESS --- : TOOLING TO BE CONFIRMED		
CONNECTOR SERIES No. : 505066-**09					

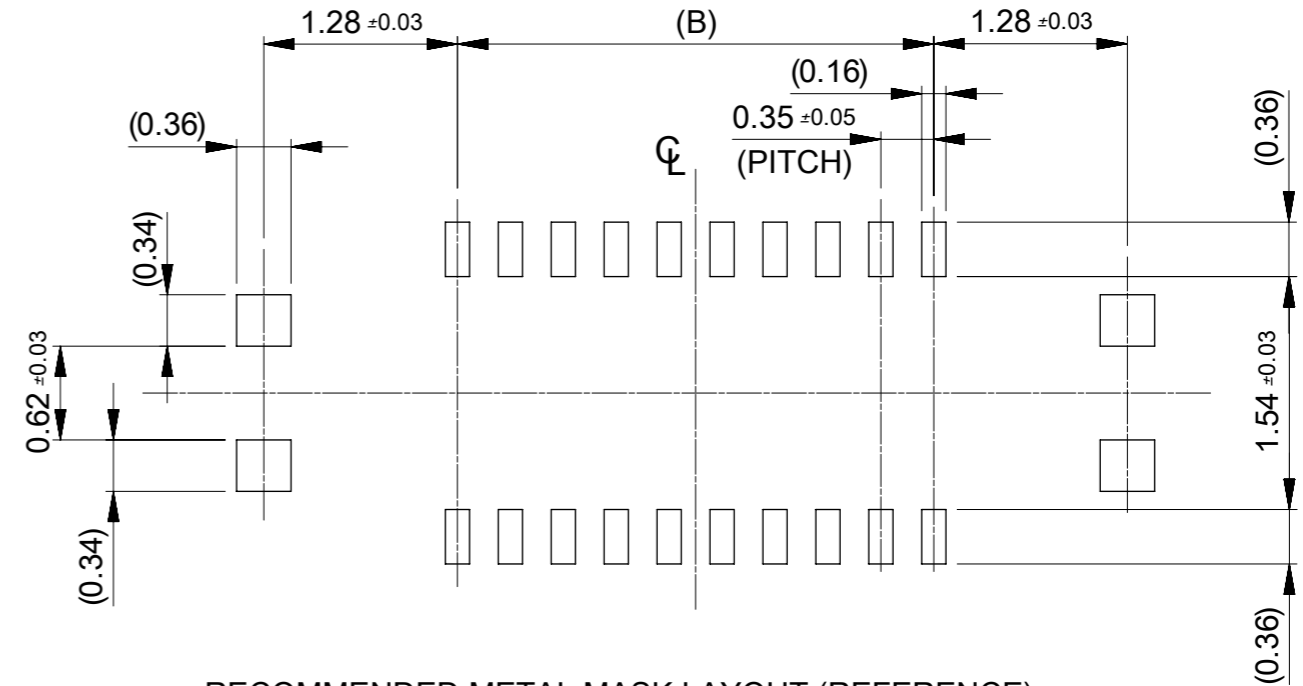
THIS DRAWING CONTAINS INFORMATION THAT IS PROPRIETARY TO MOLEX ELECTRONIC TECHNOLOGIES, LLC AND SHOULD NOT BE USED WITHOUT WRITTEN PERMISSION

REVISED	2016/12/06	DRWN: TSOMEYA	GENERAL TOLERANCES (UNLESS SPECIFIED)	DIMENSION UNITS	SCALE	molex	
	2016/12/06	CHK'D: TASAKAWA		MM	20:1		
	2016/12/06	APPR: TKUSUHARA01		ANGULAR TOL ± 1.0 °	DRWN BY		DATE
	4 PLACES	± 0.001		TSOMEYA	2016/06/21		
	3 PLACES	± 0.003		CHK'D BY	DATE		
2 PLACES	± 0.03	KTANAKA03	2016/12/01	APPR BY	DATE		
1 PLACE	± 0.1	TKUSUHARA01	2016/12/01	DRAWING SIZE	THIRD ANGLE PROJECTION		
0 PLACES	± 0.2	DRAFT WHERE APPLICABLE MUST REMAIN WITHIN DIMENSIONS		A3			
EC NO: 111141		REV		A3		PRODUCT CUSTOMER DRAWING SERIES: 505066 MATERIAL NUMBER: SEE CHART CUSTOMER: GENERAL DOCUMENT NUMBER: 5050661000 DOC TYPE: PSD DOC PART: 001 SHEET NUMBER: 1 OF 2	
B		REV		A3			
B		REV		A3			



RECOMMENDED P.W. BOARD PATTERN LAYOUT (REFERENCE)

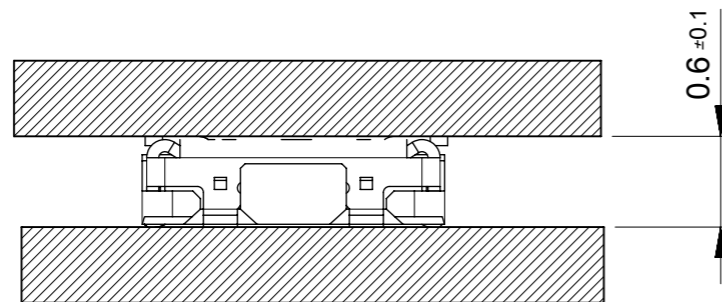
△ PROHIBITED AREA OF PATTERN WIRING AND SOLDER
 (FOR EACH AREA, THE WIRING THAT TOUCHES ON THE SOLDER CAN BE ATTACHED, THEN COVERED WITH A FILM TO KEEP SOLDER OUT)



RECOMMENDED METAL MASK LAYOUT (REFERENCE)

RECOMMENDED THICKNESS OF METAL MASK : t=0.08mm

RECOMMENDED OPEN APERTURE RATIO OF METAL MASK : 80%



MATED CONDITION

THIS DRAWING CONTAINS INFORMATION THAT IS PROPRIETARY TO MOLEX ELECTRONIC TECHNOLOGIES, LLC AND SHOULD NOT BE USED WITHOUT WRITTEN PERMISSION

REVISED	EC NO: 111141	2016/12/06	GENERAL TOLERANCES (UNLESS SPECIFIED)	DIMENSION UNITS	SCALE	molex®			
	DRWN: TSOMEYA	2016/12/06	ANGULAR TOL ± 1.0 °	MM	20:1				
	CHK'D: TASAKAWA	2016/12/06	4 PLACES ± 0.001	DRWN BY	DATE	PRODUCT CUSTOMER DRAWING			
	APPR: TKUSUHARA01		3 PLACES ± 0.003	TSOMEYA	2016/06/21				
			2 PLACES ± 0.03	CHK'D BY	DATE	505066	SEE CHART	GENERAL	
		1 PLACE ± 0.1	APPR BY	DATE	DOCUMENT NUMBER				
		0 PLACES ± 0.2	TKUSUHARA01	2016/12/01	5050661000				
		DRAFT WHERE APPLICABLE MUST REMAIN WITHIN DIMENSIONS	DRAWING SIZE	THIRD ANGLE PROJECTION	DOC TYPE				
			A3		PSD				
					DOC PART				
					001				
					SHEET NUMBER				
					2 OF 2				