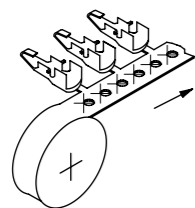


NOTE: INTER LEAF PAPER
BETWEEN LAYERS

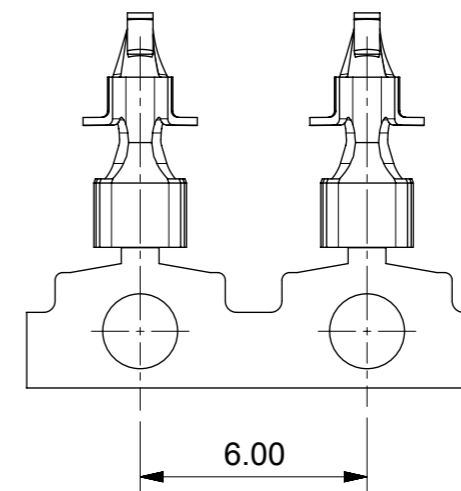
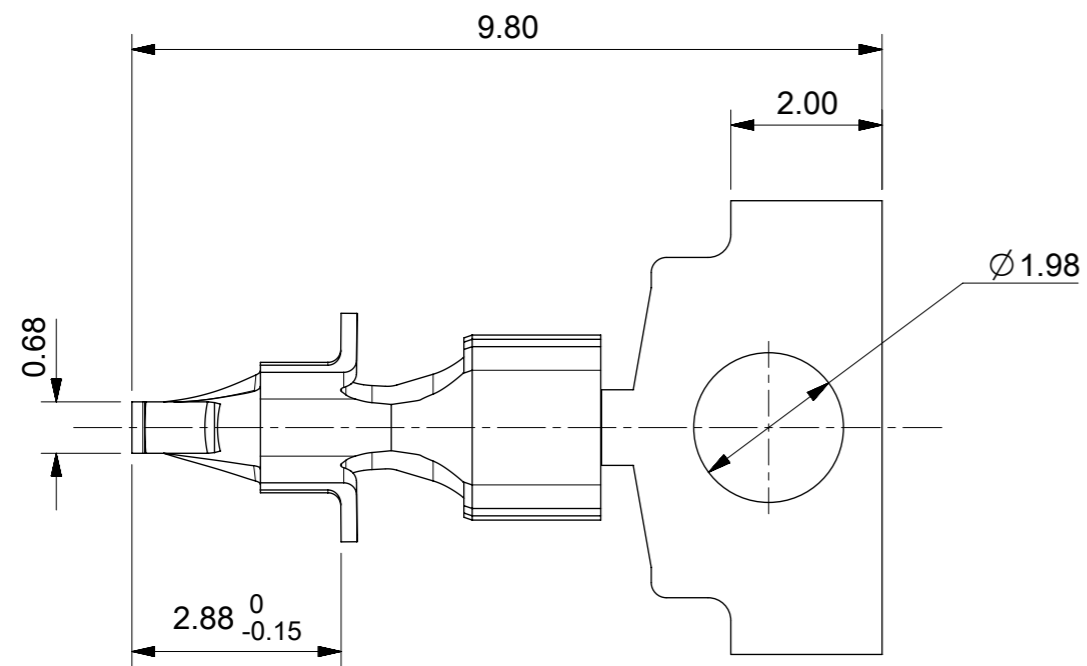


UNREEILING DIRECTION
TO CUSTOMER

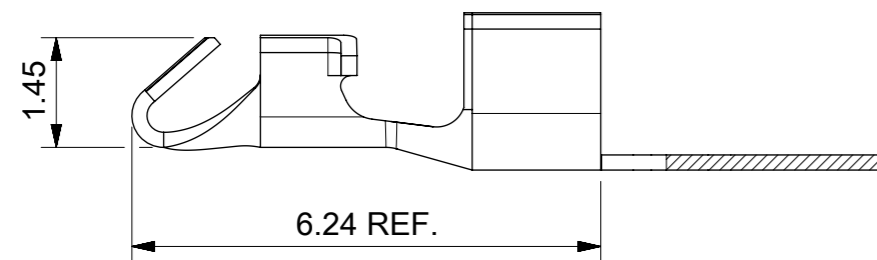
NOTES:

1. MATERIAL: 0.20 PHOS.BR. PER E.S. 99001-0545.
2. PLATING: HOT TIN DIP 1.0 μ m - 2.5 μ m
3. TERMINAL WILL ACCOMODATE
22 AWG SOLID OR FUSED WIRE
24 AND 26 AWG SOLID, STRANDED OR FUSED WIRE
WIRE 1.52 MAX. INSULATION DIA.
4. P.C.B. MOUNTING HOLE:
22 AWG DIA 1.23/1.30
24 AND 26 AWG DIA 1.17/1.25
5. MAX. PCB THICKNESS 1.57 \pm 0.20

SYMBOLS	THIS DRAWING CONTAINS INFORMATION THAT IS PROPRIETARY TO MOLEX ELECTRONIC TECHNOLOGIES, LLC AND SHOULD NOT BE USED WITHOUT WRITTEN PERMISSION		
	DIMENSION UNITS	SCALE	CURRENT REV DESC: CAD MIGRATIONREMASTER MODELS AND DRAWINGS
$\nabla = 0$	mm	10:1	EC NO: 635385 DRWN: CRAODOREMS 2019/12/19 CHK'D: CRAODOREMS 2020/04/07 APPR: JKLECHA 2020/04/20
$\nabla = 0$	GENERAL TOLERANCES (UNLESS SPECIFIED)		
$\nabla = 0$	ANGULAR TOL $\pm 0.5^\circ$		INITIAL REVISION: DRWN: MC 1988/10/03 APPR: MWILHITE 1996/07/22
$\nabla = 0$	4 PLACES	\pm	
$\nabla = 0$	3 PLACES	\pm	DOCUMENT NUMBER SD-90198
$\nabla = 0$	2 PLACES	± 0.2	
$\nabla = 0$	1 PLACE	± 0.38	DOC TYPE PSD
$\nabla = 0$	0 PLACES	\pm	
$\nabla = 0$	DRAFT WHERE APPLICABLE MUST REMAIN WITHIN DIMENSIONS		DOC PART 001
$\nabla = 0$	THIRD ANGLE PROJECTION	DRAWING A3-SIZE	
$\nabla = 0$	SERIES 90198	MATERIAL NUMBER 901980001	REVISION N1
	CUSTOMER GENERAL MARKET	SHEET NUMBER 1 OF 2	



SCALE 5:1



NOTES:

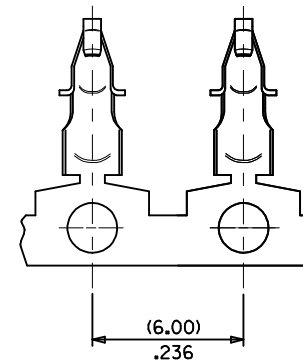
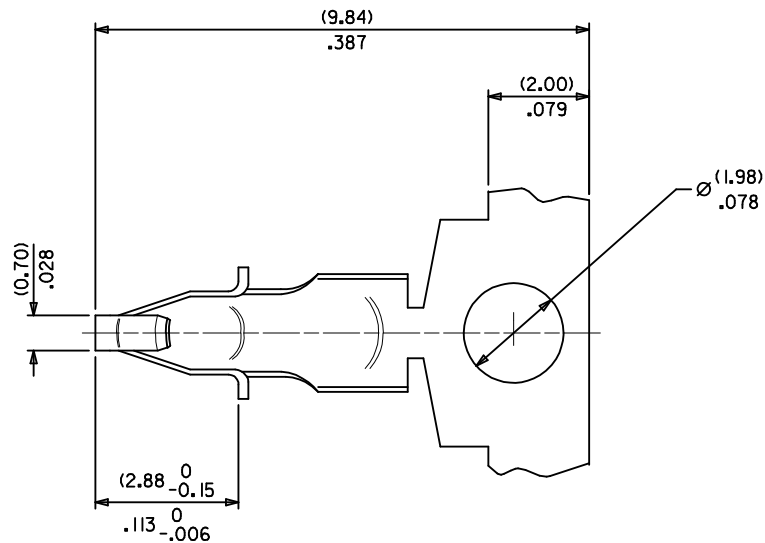
1. MATERIAL: 0.20 PHOSPHOR BRONZE
2. PLATING: HOT TIN DIP
3. TERMINAL WILL ACCOMODATE
22 AWG SOLID OR FUSED WIRE
24 AND 26 AWG SOLID, STRANDED OR FUSED WIRE
WIRE 1.52 MAX. INSULATION DIA.
4. P.C.B. MOUNTING HOLE:
22 AWG DIA 1.23/1.30
24 AND 26 AWG DIA 1.17/1.25
5. MAX. PCB THICKNESS 1.19±0.20

SYMBOLS	THIS DRAWING CONTAINS INFORMATION THAT IS PROPRIETARY TO MOLEX ELECTRONIC TECHNOLOGIES, LLC AND SHOULD NOT BE USED WITHOUT WRITTEN PERMISSION		
	DIMENSION UNITS	SCALE	CURRENT REV DESC: CAD MIGRATIONREMASTER MODELS AND DRAWINGS
▽ = 0	mm	10:1	EC NO: 635385 DRWN: CRAODOREMS 2019/12/19 CHK'D: CRAODOREMS 2020/04/07 APPR: JKLECHA 2020/04/20
▽ = 0	GENERAL TOLERANCES (UNLESS SPECIFIED)		
▽ = 0	ANGULAR TOL ± 0.5°		INITIAL REVISION: DRWN: CTOBIN 1998/07/06 APPR: MWILHITE 1998/07/06
▽ = 0	4 PLACES	±	
▽ = 0	3 PLACES	±	DOCUMENT NUMBER SD-90198
▽ = 0	2 PLACES	± 0.2	
▽ = 0	1 PLACE	± 0.38	DOC TYPE PSD
▽ = 0	0 PLACES	±	DOC PART 001
□ = 0	DRAFT WHERE APPLICABLE MUST REMAIN WITHIN DIMENSIONS		REVISION N1
▽ = 0	THIRD ANGLE PROJECTION	DRAWING A3-SIZE	SHEET NUMBER 2 OF 2
	SERIES 90198	MATERIAL NUMBER 901980002	CUSTOMER GENERAL MARKET

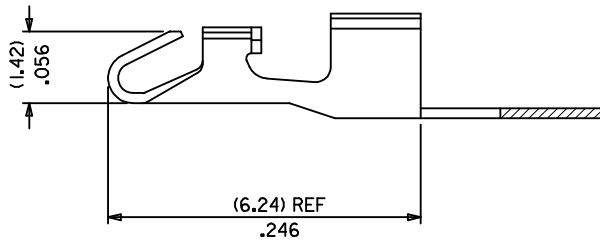
molex

PCM CRIM TERM BRD-IN
STAND ALONE 1TNL

PRODUCT CUSTOMER DRAWING



SCALE 5:1



NOTES.

1. MATERIAL: (0.20)/.008 PHOSPHOR BRONZE
2. PLATING: HOT TIN DIP
3. TERMINAL WILL ACCOMMODATE
22 AWG SOLID OR FUSED WIRE
24 AND 26 AWG SOLID, STRANDED OR FUSED WIRE
WITH (1.52)/.060 MAX. INSULATION DIA.
4. P.C.B. MOUNTING HOLE:
22 AWG DIA (1.23/1.30)-.048/.051
24 AND 26 AWG DIA (1.17/1.25)-.046/.049
5. MAX. P.C.B. THICKNESS (1.19±0.20)/.047±.008

UPDATED BORDER EC NO: E2007-0844 DRWN:DMAHER CHKD: APPR:EFOLAN 2007/04/05 2007/04/12 2007/04/13	DESCRIPTION REV	QUALITY SYMBOLS	GENERAL TOLERANCES (UNLESS SPECIFIED)	DIMENSION STYLE	SCALE	DESIGN UNITS	THIRD ANGLE PROJECTION																									
		$\nabla=0$ $\text{C}=0$	<table border="1"> <thead> <tr> <th></th> <th>mm</th> <th>INCH</th> </tr> </thead> <tbody> <tr> <td>4 PLACES</td> <td>± ---</td> <td>± ---</td> </tr> <tr> <td>3 PLACES</td> <td>± ---</td> <td>± .008</td> </tr> <tr> <td>2 PLACES</td> <td>± 0.20</td> <td>± .015</td> </tr> <tr> <td>1 PLACE</td> <td>± 0.38</td> <td>± ---</td> </tr> </tbody> </table>		mm	INCH	4 PLACES	± ---	± ---	3 PLACES	± ---	± .008	2 PLACES	± 0.20	± .015	1 PLACE	± 0.38	± ---	MM/IN	10:1	METRIC											
			mm	INCH																												
		4 PLACES	± ---	± ---																												
3 PLACES	± ---	± .008																														
2 PLACES	± 0.20	± .015																														
1 PLACE	± 0.38	± ---																														
	<table border="1"> <thead> <tr> <th></th> <th>mm</th> <th>INCH</th> </tr> </thead> <tbody> <tr> <td>ANGULAR</td> <td>± .5 °</td> <td></td> </tr> </tbody> </table>		mm	INCH	ANGULAR	± .5 °		<table border="1"> <tr> <td>DRAWN BY</td> <td>DATE</td> <td>TITLE</td> </tr> <tr> <td>CTOBIN</td> <td>98/07/06</td> <td>PCM CRIM TERM BRD-IN STAND ALONE 1TNL</td> </tr> <tr> <td>CHECKED BY</td> <td>DATE</td> <td></td> </tr> <tr> <td>TMAHON</td> <td>98/07/06</td> <td></td> </tr> <tr> <td>APPROVED BY</td> <td>DATE</td> <td></td> </tr> <tr> <td>MWILHITE</td> <td>98/07/06</td> <td></td> </tr> <tr> <td>MATERIAL NO.</td> <td>DOCUMENT NO.</td> <td>SHEET NO.</td> </tr> <tr> <td>901980002</td> <td>SD-90198</td> <td>2 OF 2</td> </tr> </table>	DRAWN BY	DATE	TITLE	CTOBIN	98/07/06	PCM CRIM TERM BRD-IN STAND ALONE 1TNL	CHECKED BY	DATE		TMAHON	98/07/06		APPROVED BY	DATE		MWILHITE	98/07/06		MATERIAL NO.	DOCUMENT NO.	SHEET NO.	901980002	SD-90198	2 OF 2
	mm	INCH																														
ANGULAR	± .5 °																															
DRAWN BY	DATE	TITLE																														
CTOBIN	98/07/06	PCM CRIM TERM BRD-IN STAND ALONE 1TNL																														
CHECKED BY	DATE																															
TMAHON	98/07/06																															
APPROVED BY	DATE																															
MWILHITE	98/07/06																															
MATERIAL NO.	DOCUMENT NO.	SHEET NO.																														
901980002	SD-90198	2 OF 2																														
	DRAFT WHERE APPLICABLE MUST REMAIN WITHIN DIMENSIONS	SIZE A3	THIS DRAWING CONTAINS INFORMATION THAT IS PROPRIETARY TO MOLEX INCORPORATED AND SHOULD NOT BE USED WITHOUT WRITTEN PERMISSION																													