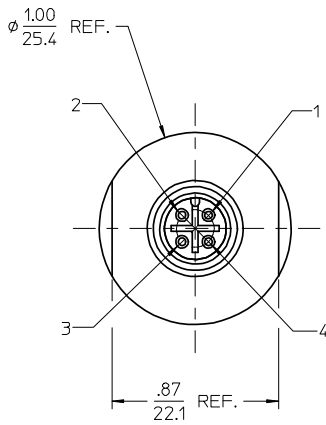


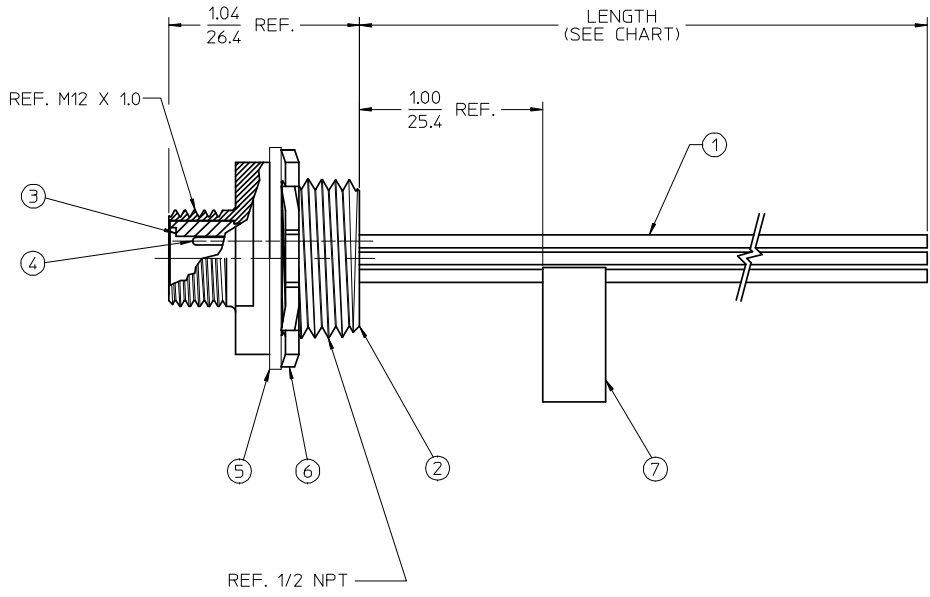
MATERIAL NO.	ENGINEERING NO.	LENGTH	WIRE CUT LENGTH
849070007	84907-0007	12.00 +1.75-0 (304.8 +44.5-0)	13.25 IN (336.6mm)

MALE FACE VIEW

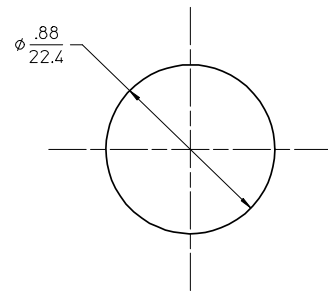
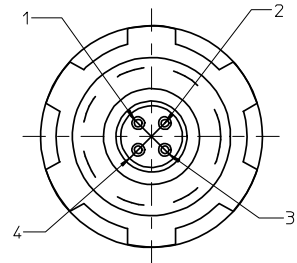


1	BROWN
2	WHITE
3	BLUE
4	BLACK

WIRING DIAGRAM



REAR VIEW



REF. PANEL KNOCK-OUT

- NOTES:
1. MATERIALS: SEE TABLE
 2. FINISHES: SEE TABLE
 3. ELECTRICAL SPECIFICATIONS:
VOLTAGE RATING: 250V
CURRENT RATING, 4 AMPS
 4. LABEL IS MARKED WITH PART NO., DATE CODE, VOLTAGE AND CURRENT RATING
 5. LABEL IS ATTACHED TO BLUE WIRE (CIR. 3)
 6. ASSEMBLY IS ROHS COMPLIANT BY EXEMPTION (*).

ITEM	QTY	DESCRIPTION	MATERIAL	FINISH
7	1	LABEL	VINYL	BLACK/YELLOW
6	1	LOCKNUT, PANEL, 1/2 NPT	STEEL	ZINC PLATED
5	1	GASKET	NEOPRENE	BLACK
4	4	CONTACT PIN	BRASS *	TIN PLATED
3	1	INSULATOR, 4/C, DC KEY	NYLON	BLACK
2	1	RECEPTACLE SHELL	STAINLESS STEEL	PASSIVATED
1	4	WIRE, 22 AWG	PVC INSULATION	AS NOTED

RELEASED FOR BUILD EC NO: WNA2009-0005 DRAWN BY: DRWINSTONE 2008/07/09 CHKDK: JOZWIK APPR: J. MURPHY 2008/08/18	QUALITY SYMBOLS
	$\nabla=0$ $\nabla=0$
	DESCRIPTION
	REV

GENERAL TOLERANCES (UNLESS SPECIFIED)	
	IN/MM
4 PLACES ±	± .01
3 PLACES ±	± .01
2 PLACES ±	± .01
1 PLACE ±	± .03
ANGULAR ± --- °	
DRAFT WHERE APPLICABLE MUST REMAIN WITHIN DIMENSIONS	

DIMENSION STYLE	
IN/MM	
DRAWN BY	DATE
R. STONE	2008/07/02
CHECKED BY	DATE
K. JOZWIK	2008/07/07
APPROVED BY	DATE
J. MURPHY	2008/07/10
MATERIAL NO.	
SEE CHART	
SIZE	
THIS DRAWING CONTAINS INFORMATION THAT IS PROPRIETARY TO MOLEX INCORPORATED AND SHOULD NOT BE USED WITHOUT WRITTEN PERMISSION	

SCALE	DESIGN UNITS	THIRD ANGLE PROJECTION
2:1	INCH	
TITLE		
MIC-C RECEPTACLE, 4/C MALE, DC KEY, 22 AWG 1/2 NPT, SS		
MOLEX INCORPORATED		
DOCUMENT NO.	SHEET NO.	
SD-84907-012	1 OF 1	