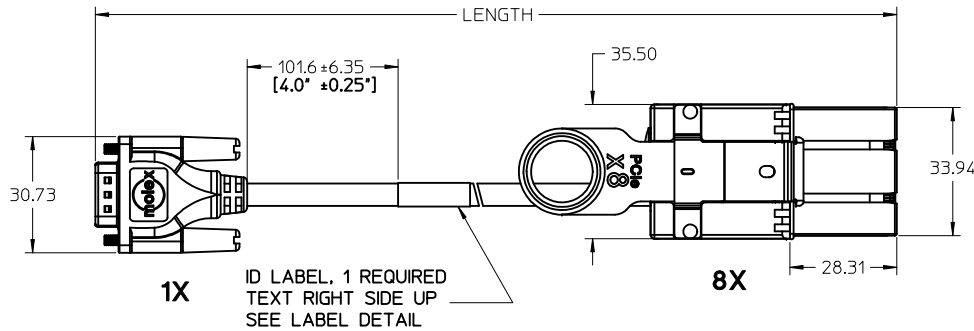
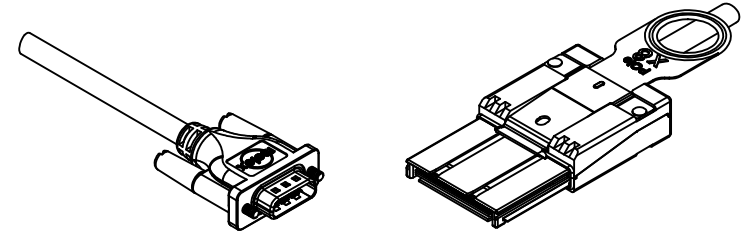


ID LABEL DETAIL
SCALE 2:1

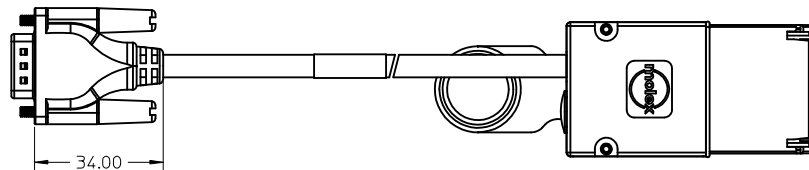
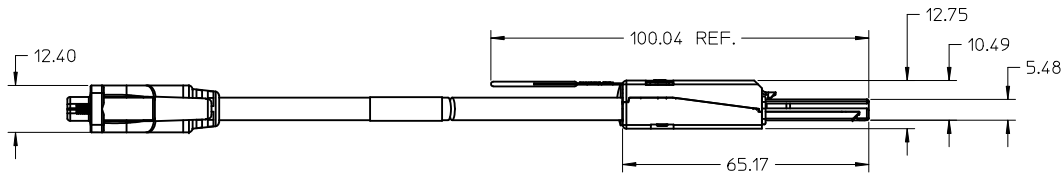
LABEL TO CONTAIN THE FOLLOWING INFORMATION:

YDDLSSSS
 Y = LAST DIGIT OF YEAR
 DDD = DAY OF THE YEAR
 L = LOCATION (1 = HPC; 2 = GUAD; 3 = DG)
 SSSS = SERIAL NUMBER



1X ID LABEL, 1 REQUIRED
TEXT RIGHT SIDE UP
SEE LABEL DETAIL

8X

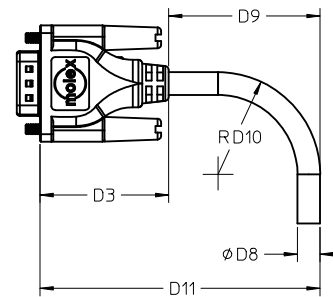
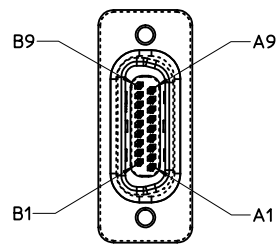
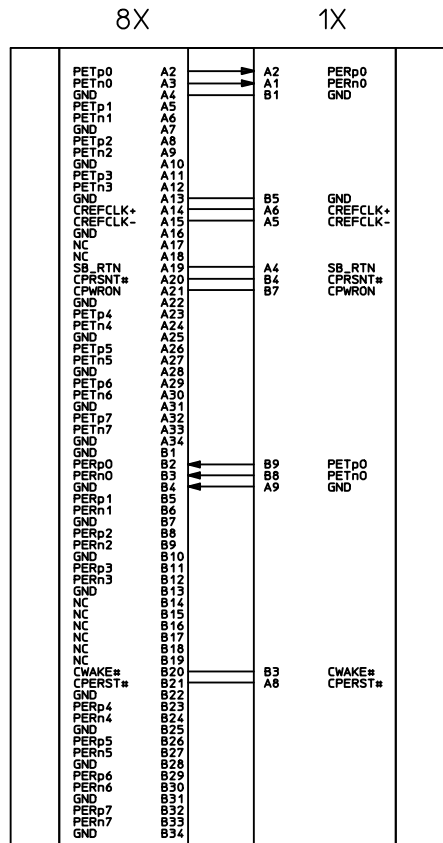


MOLEX P/N	LENGTH	AWG	TOLERANCE
745464810	0.5M	28	0.025M
745464811	1M	28	0.025M
745464812	2M	28	0.025M
745464813	3M	28	0.025M
745464814	4M	26	0.05M
745464815	5M	26	0.05M
745464816	6M	24	0.08M
745464817	7M	24	0.08M

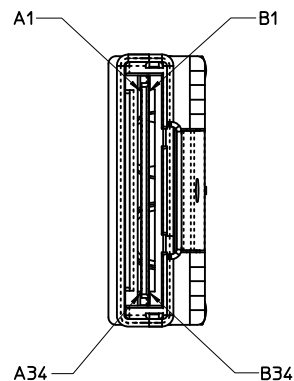
- NOTES:
- MATERIAL - BACKSHELLS - ZINC DIECAST
PULL - DUPONT ZYTEL ST801 NYLON 6/6
 - LENGTH AND TOLERANCE - SEE TABLE
 - ELECTRICAL PERFORMANCE PER PCI EXPRESS EXTERNAL CABLING SPEC.
 - PLUG MATES TO RECEPTACLE 755860002, AND EMI GUIDE HOUSING ASSY. 745400100
 - LEAD FREE, NO ROHS EXEMPTIONS.
 - NOT COMPLIANT WITH INSERTION LOSS SPEC PER PCIe EXTERNAL CABLING SPECIFICATION.

IPASS™ IS A TRADEMARK OF MOLEX

ADDITIONAL LABEL EC NO: CPG2012-1575 IDRWINKNEBER 2012/05/10 CHKD: APPR:K.JANOTA 2012/05/30	QUALITY SYMBOLS ∇=0 ∇=0 ∇=0	GENERAL TOLERANCES (UNLESS SPECIFIED) <table border="1"> <thead> <tr> <th></th> <th>mm</th> <th>INCH</th> </tr> </thead> <tbody> <tr> <td>4 PLACES</td> <td>± 0.13</td> <td>± 0.005</td> </tr> <tr> <td>3 PLACES</td> <td>± 0.25</td> <td>± 0.010</td> </tr> <tr> <td>2 PLACES</td> <td>± 0.50</td> <td>± 0.020</td> </tr> <tr> <td>1 PLACE</td> <td>± 1.00</td> <td>± 0.040</td> </tr> <tr> <td>0 PLACE</td> <td>± 1.50</td> <td>± 0.060</td> </tr> </tbody> </table>		mm	INCH	4 PLACES	± 0.13	± 0.005	3 PLACES	± 0.25	± 0.010	2 PLACES	± 0.50	± 0.020	1 PLACE	± 1.00	± 0.040	0 PLACE	± 1.50	± 0.060	DIMENSION STYLE MM ONLY DRAWN BY DATE JERWIN 2008/01/28 CHECKED BY DATE BSCHOESTER 2008/01/28 APPROVED BY DATE DDOYE 2008/01/28	SCALE 1:1 DESIGN UNITS METRIC THIRD ANGLE PROJECTION	TITLE 8X TO 1X PCIe IPASS CABLE ASSEMBLY
		mm	INCH																				
	4 PLACES	± 0.13	± 0.005																				
	3 PLACES	± 0.25	± 0.010																				
2 PLACES	± 0.50	± 0.020																					
1 PLACE	± 1.00	± 0.040																					
0 PLACE	± 1.50	± 0.060																					
DRAFT WHERE APPLICABLE MUST REMAIN WITHIN DIMENSIONS		MATERIAL NO. SEE CHART	DOCUMENT NO. SD-74546-481	SHEET NO. 1 OF 2																			
THIS DRAWING CONTAINS INFORMATION THAT IS PROPRIETARY TO MOLEX. INCORPORATED AND SHOULD NOT BE USED WITHOUT WRITTEN PERMISSION																							



AWG	24	28	TOLERANCE
D3	34.00	34.00	REF
D8	6.5	5.80	REF
D9	35.6	32.45	MIN
D10	29.25	26.10	MIN
D11	75.95	72.80	MIN



A3, A7, B2, B6 NO CONNECT.
FOR 1X SIDE

IPASS™ IS A TRADEMARK OF MOLEX

ADDED LABEL EC NO: CFG2012-1575 DRW:KWEBER 2012/05/06 CHKD: APPR:K.JANOTA 2012/05/30	QUALITY SYMBOLS 	GENERAL TOLERANCES (UNLESS SPECIFIED)		DIMENSION STYLE MM ONLY	SCALE 1:1	DESIGN UNITS METRIC	THIRD ANGLE PROJECTION	
				DRAWN BY JERWIN	DATE 2008/01/28	TITLE 8X TO 1X PCIE IPASS CABLE ASSEMBLY DOCUMENT NO. SD-74546-481 SHEET NO. 2 OF 2		
		4 PLACES ± --- ± ---		CHECKED BY BSCHOESTER	DATE 2008/01/28			
		3 PLACES ± --- ± ---		APPROVED BY DDOYE	DATE 2008/01/28			
2 PLACES ± 0.13 ± ---								
1 PLACE ± 0.25 ± ---		ANGULAR ±1/2°		MATERIAL NO.		SEE CHART		
0 PLACE ± --- ± ---		DRAFT WHERE APPLICABLE MUST REMAIN WITHIN DIMENSIONS		SIZE C		THIS DRAWING CONTAINS INFORMATION THAT IS PROPRIETARY TO MOLEX INCORPORATED AND SHOULD NOT BE USED WITHOUT WRITTEN PERMISSION		