

# EXTreme Guardian Power Connector System 11.00mm Pitch with 80.0A Per Blade

**molex**

Exceed high-current and reliability requirements with EXTreme Guardian™ Power Connector System, providing EMI/RFI shielding with overmolded and non-overmolded cable harness options in vertical and right-angle configurations for design flexibility

## Features and Benefits

### SYSTEM WIDE

**Current-dense design with high-current terminals and relatively small pitch**

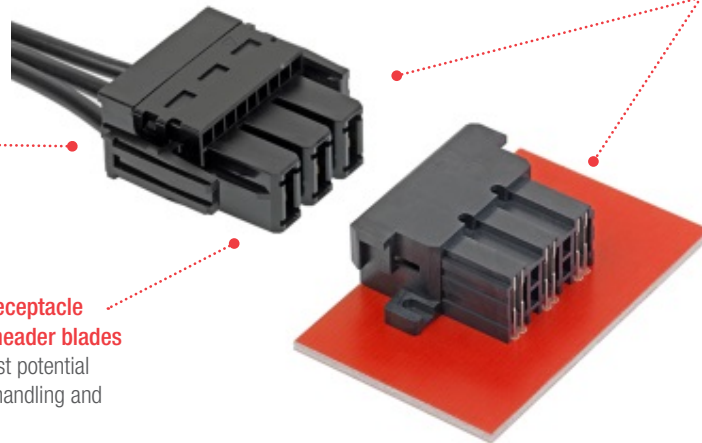
Provides one of the greatest current-density options amongst high-current wire-to-board connectors

**Fully isolated receptacle terminals and header blades**

Protection against potential damage during handling and mating

**Relatively small 11.00mm pitch**

Provides a very high 185.0A per linear inch in high-current applications



*Non-Overmolded Power Assembly with Right-Angle Header (Series 151035)*

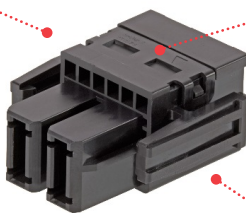
### RECEPTACLE

**Housings accept large gauge wire (up to 6 AWG)**

Provides a large current-carrying capacity

**Housing lead-in chambers**

Provide terminal gatherability for easy mating to header



*2-Circuit Receptacle (Series 151034)*

**Terminal position assurance (TPA) feature**

Prevents backing out of terminals during mating and unmating

**Positive locking housing**

Ensures secure retention when receptacle and header are mated. Delivers an audible click to provide feedback that connector is fully mated

**Through-hole solder retention design**

Offers a robust, reliable manufacturing option

**Compliant, press-fit tails available**

Lowers processing costs. Allows for no max PCB thickness

**Solder tails in multiple lengths**

Support multiple PCB thicknesses

### TERMINALS

**Terminal interface with 6 independent points of contact**

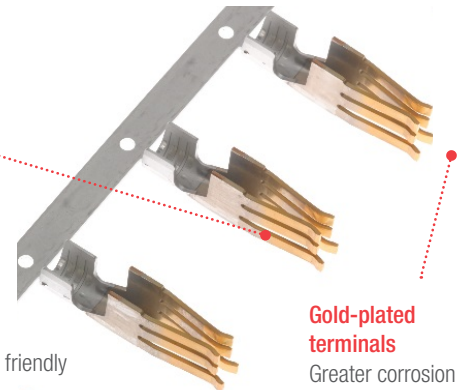
Offers redundant, secondary current paths for long-term performance and reliability

**Low-halogen**

Environmentally friendly

**Gold-plated terminals**

Greater corrosion resistance compared to other materials, which optimizes electrical conductivity



*Power Terminal (Series 46819)*

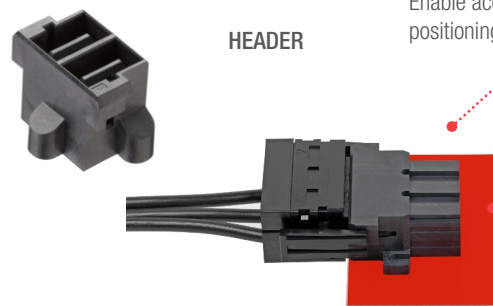
**Locating pegs on housing**

Enable accurate through-hole positioning to PCB

### HEADER

**Right-angle header has 2 contact blade lengths**

Allows for varied mating sequences



*Vertical PCB Header, 2 Circuits (Series 151053)*

# EXTreme Guardian Power Connector System 11.00mm Pitch with 80.0A Per Blade

**molex**

## Applications

### Data Communication Equipment

High-end servers

### Telecommunication Equipment

### Manufacturers

Cellular base stations

Hubs

Servers

Routers

Switches

### Aerospace and Defense\*

### Power Supplies

Uninterruptable Power Supply (UPS)

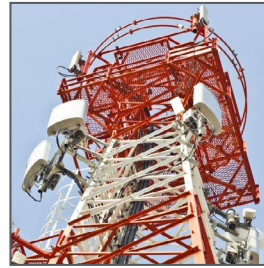
### Other Markets

Solar

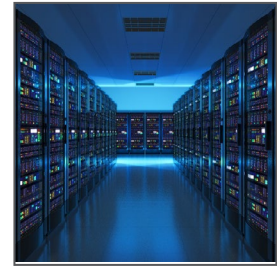
Medical

Electric vehicles

Commercial applications that require small formfactor interconnects delivering up to 200.0A



Base Tower



Servers

## Specifications

### REFERENCE INFORMATION

Packaging: Tray, Reel or Bulk

UL File No.: E29179

CSA File No.: LR19980 (1779070)

Mates With: PCB Headers

(Series 46817, 151035, 151053) mate with

Overmolded Cable Assemblies

(Series 68790 or 111119)

Use With: Power Harness Crimp Receptacles

(Series 46818, 151034) use

High-Power Terminals (Series 46819) and

TPA Clips (Series 151076)

Designed In: Millimeters

RoHS: Yes

Halogen Free: Yes

Glow Wire Compliant: No

### ELECTRICAL

Voltage (max.): 600V AC/DC

Current (max.): 80.0A per blade

Dielectric Withstanding Voltage: 2,200V AC

### MECHANICAL

Contact Retention to Housing (average): 26.61N

Mating Force (max.): 36.60N

Unmating Force (max.): 34.39N

Durability (min.): 25 cycles

### PHYSICAL

Housing: Polyester, 94V-0

Contact: Copper (Cu) Alloy

Plating:

Contact Area — Gold (Au)

Solder Tail Area — Tin (Sn)

Underplating — Nickel (Ni)

PCB Thickness (min.): 2.30/1.50mm

Operating Temperature: -40 to +105°C

# EXTreme Guardian Power Connector System 11.00mm Pitch with 80.0A Per Blade



## Ordering Information

### PCB Headers (Series 46817, 151035, 151053)

Series No.	Orientation	Overmolded	PCB Thickness (mm)	Tail Length (mm)	PCB Termination Style	Circuits
<a href="#">46817</a>	Right angle	Yes	2.30/1.50mm	3.86 or 4.69	Through hole	2 or 3
<a href="#">151035</a>	Right angle	No		3.86	Through hole	2 to 6
<a href="#">151053</a>	Vertical	No		N/A (press-fit tail)	Through hole, compliant pin	2 to 6

### Power Crimp Receptacles (Series 151034)

Series No.	Overmolded	Circuits	Wire Gauge (AWG)
<a href="#">151034</a>	No	2 to 6	6

### High-Power Receptacle Terminals (Series 46819)

Series No.	Wire Gauge (AWG)	Plating
<a href="#">46819</a>	6, 8, 10	Gold (Au)

### Receptacle Harness Terminal Position Assurance (TPA) Clips (Series 151076)

Series No.	Circuits
<a href="#">151076</a>	2, 3, 4, 5, 6

### Power Cable Assemblies

Custom Product	Description
<a href="#">Contact Molex</a>	EXTreme Guardian Power Cable Assemblies

[www.molex.com/link/extremeguardian.html](http://www.molex.com/link/extremeguardian.html)

Molex is a registered trademark of Molex, LLC in the United States of America and may be registered in other countries; all other trademarks listed herein belong to their respective owners.