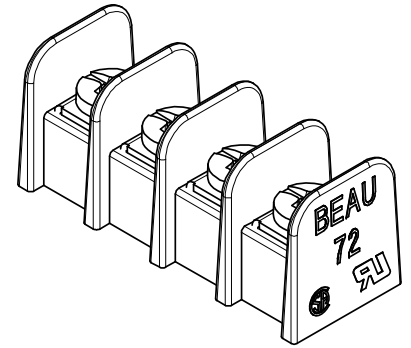
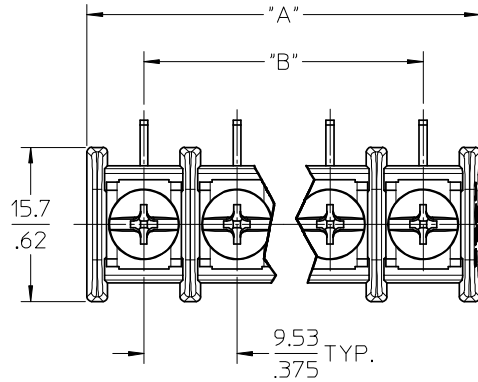
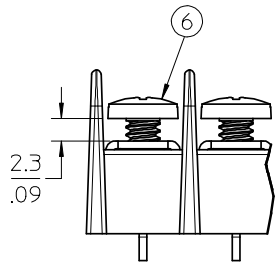


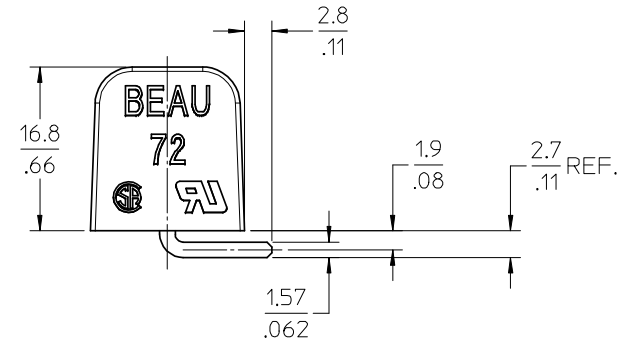
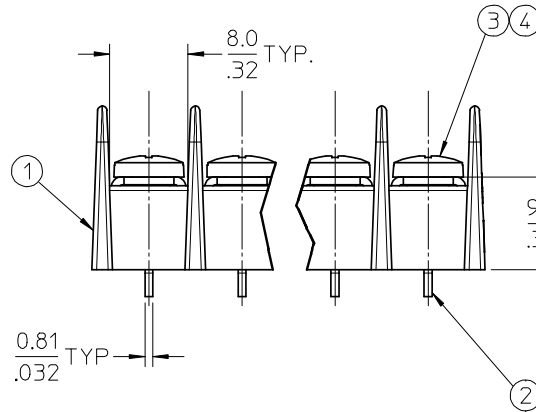
REF. -50 OPTION,
CLAMP WASHER SCREW
(WHERE APPLICABLE)



4 CIRCUIT SHOWN



REF. -47 OPTION,
"WIRE READY" SCREW
(WHERE APPLICABLE)



NOTES:

1. MATERIAL: SEE TABLE
2. FINISHES: SEE TABLE
3. "XX" REFERS TO THE QUANTITY OF CIRCUITS.
4. UL FILE# E48521, SEE SHEET 2.
5. CSA FILE# 025562, SEE SHEET 2.
6. INSULATOR IS UL 94 V-0
7. ALL COMPONENTS ARE ROHS COMPLIANT.

ITEM	QTY.	DESCRIPTION	MATERIAL	FINISH
6	XX	SCREW #6-32 BHD, PH-SL, WRDY (-47 OPT)	STEEL	ZN, CLEAR CHROMATE
5	XX	SCREW&WASHER #6-32 PAN, PH-SL (-50 OPT)	STEEL	ZN, CLEAR CHROMATE
4	XX	SCREW #6-32 BHD, PHIL-SLOT (-49 OPT)	BRASS	NICKEL PLATE
3	XX	SCREW #6-32 BHD, PHIL-SLOT (STD.)	STEEL	ZN, CLEAR CHROMATE
2	XX	TERMINAL, WW	BRASS	TIN PLATE
1	1	INSULATOR, SR, NO MTG.	PBT, 30% GF	BLACK

ADD -47 OPT. EC NO: WNA2009-0006 DRW:NYC 2008/07/18 CHKD:RDEROSS 2008/07/29 APPR:RDEROSS 2008/07/31	QUALITY SYMBOLS	GENERAL TOLERANCES (UNLESS SPECIFIED)	DIMENSION STYLE	SCALE	DESIGN UNITS	THIRD ANGLE PROJECTION	
	▽=0 ▽=0	mm INCH	MM/IN	2:1	INCH		
		4 PLACES ± --- ± ---	DRAWN BY DATE	TITLE	9.53/.375 SR BTS ASY, PC RA, NO MTG		
		3 PLACES ± --- ± .005	C. YORK 2006/02/08				
2 PLACES ± 0.13 ± .01	CHECKED BY DATE		MOLEX INCORPORATED				
1 PLACE ± 0.25 ± ---	RDEROSS 2006/02/08						
	APPROVED BY DATE	ANGULAR ± 2 °	APPROVED BY DATE	DOCUMENT NO.	SHEET NO.		
	RDEROSS 2006/02/08		RDEROSS 2006/02/08	SD-38721-001	1 OF 2		
		DRAFT WHERE APPLICABLE MUST REMAIN WITHIN DIMENSIONS	MATERIAL NO.	THIS DRAWING CONTAINS INFORMATION THAT IS PROPRIETARY TO MOLEX INCORPORATED AND SHOULD NOT BE USED WITHOUT WRITTEN PERMISSION			
			SEE CHART				
			SIZE B				

NUMBER OF CIRCUITS "XX"	DIM. "A"		DIM. "B"		MATERIAL NO. WITH STD. SCREW (-C OPT.)	MATERIAL NO. WITH WIRE READY SCREW (-C-47 OPT.)	MATERIAL NO. WITH BRASS SCREW (-C-49 OPT.)	MATERIAL NO. W/CLAMP-WASHER SCREW (-C-50 OPT.)	UL & CSA REFERENCE NUMBER
02	21.1	[.83]	9.53	[.375]	38721-5302	38721-6202	38721-5902	38721-5602	72
03	30.7	[1.21]	19.05	[.750]	38721-5303	38721-6203	38721-5903	38721-5603	72
04	40.1	[1.58]	28.58	[1.125]	38721-5304	38721-6204	38721-5904	38721-5604	72
05	49.8	[1.96]	38.10	[1.500]	38721-5305	38721-6205	38721-5905	38721-5605	72
06	59.2	[2.33]	47.63	[1.875]	38721-5306	38721-6206	38721-5906	38721-5606	72
07	68.8	[2.71]	57.15	[2.250]	38721-5307	38721-6207	38721-5907	38721-5607	72
08	78.3	[3.08]	66.68	[2.625]	38721-5308	38721-6208	38721-5908	38721-5608	72
09	87.8	[3.46]	76.20	[3.000]	38721-5309	38721-6209	38721-5909	38721-5609	72
10	97.3	[3.83]	85.73	[3.375]	38721-5310	38721-6210	38721-5910	38721-5610	72
11	106.9	[4.21]	95.25	[3.750]	38721-5311	38721-6211	38721-5911	38721-5611	72
12	116.3	[4.58]	104.78	[4.125]	38721-5312	38721-6212	38721-5912	38721-5612	72
13	126.0	[4.96]	114.30	[4.500]	38721-5313	38721-6213	38721-5913	38721-5613	72
14	135.3	[5.33]	123.83	[4.875]	38721-5314	38721-6214	38721-5914	38721-5614	72
15	145.0	[5.71]	133.35	[5.250]	38721-5315	38721-6215	38721-5915	38721-5615	72
16	154.4	[6.08]	142.88	[5.625]	38721-5316	38721-6216	38721-5916	38721-5616	72
17	164.1	[6.46]	152.40	[6.000]	38721-5317	38721-6217	38721-5917	38721-5617	72
18	173.5	[6.83]	161.93	[6.375]	38721-5318	38721-6218	38721-5918	38721-5618	72
19	183.1	[7.21]	171.45	[6.750]	38721-5319	38721-6219	38721-5919	38721-5619	72
20	192.5	[7.58]	180.98	[7.125]	38721-5320	38721-6220	38721-5920	38721-5620	72
21	202.2	[7.96]	190.50	[7.500]	38721-5321	38721-6221	38721-5921	38721-5621	72
22	211.6	[8.33]	200.03	[7.875]	38721-5322	38721-6222	38721-5922	38721-5622	72
23	221.2	[8.71]	209.55	[8.250]	38721-5323	38721-6223	38721-5923	38721-5623	72
24	230.6	[9.08]	219.08	[8.625]	38721-5324	38721-6224	38721-5924	38721-5624	72
25	240.3	[9.46]	228.60	[9.000]	38721-5325	38721-6225	38721-5925	38721-5625	72
26	249.6	[9.83]	238.13	[9.375]	38721-5326	38721-6226	38721-5926	38721-5626	72

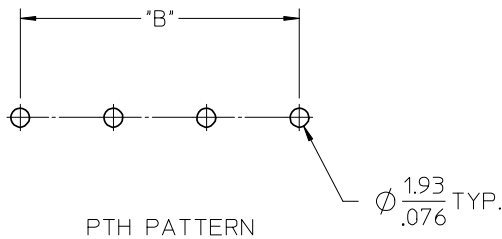
NOTES:

- 1 FOR UL OR CSA FILE, USE UL & CSA REFERENCE NO. PROVIDED IN CHART ALONG WITH THE INSTRUCTIONS BELOW.
- 2 FOR ASSEMBLY WITH CLAMP-WASHER SCREW, ADD -50 TO THE UL & CSA REFERENCE NO.

72-X

SERIES _____ OPTIONS (WHERE APPLICABLE)

UL & CSA FILE INSTRUCTIONS



SEE SHEET 1 EC NO: WNA2009-0006 DRAWN: C. YORK 2008/07/18 CHKD: RDEROSS 2008/07/29 APPR: RDEROSS 2008/07/31	QUALITY SYMBOLS ▽=0 ▽=0	GENERAL TOLERANCES (UNLESS SPECIFIED)		DIMENSION STYLE MM/IN		SCALE 2:1	DESIGN UNITS INCH	THIRD ANGLE PROJECTION		
		4 PLACES ± --- ± ---	3 PLACES ± --- ± .005	DRAWN BY C. YORK	DATE 2006/02/08	TITLE 9.53/.375 SR BTS ASY, PC RA, NO MTG				
		2 PLACES ± 0.13 ± .01	1 PLACE ± 0.25 ± ---	CHECKED BY RDEROSS	DATE 2006/02/08					
		ANGULAR ± 2 °		DRAFT WHERE APPLICABLE MUST REMAIN WITHIN DIMENSIONS		APPROVED BY RDEROSS	DATE 2006/02/08	MOLEX INCORPORATED		MATERIAL NO.
				SEE CHART			SHEET NO. 2 OF 2	THIS DRAWING CONTAINS INFORMATION THAT IS PROPRIETARY TO MOLEX INCORPORATED AND SHOULD NOT BE USED WITHOUT WRITTEN PERMISSION		