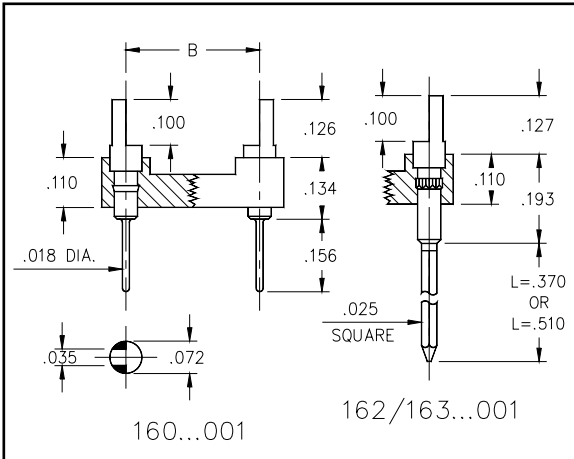




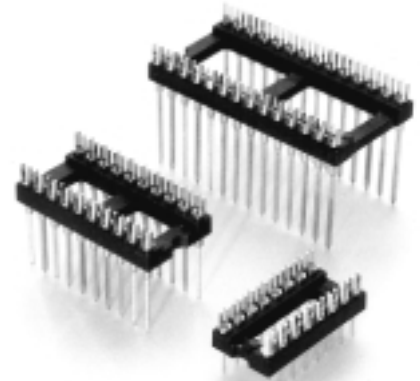
# DUAL-IN-LINE SLOTTED HEADERS

## Solder Tail and Wrapost Open Frame

Series 160, 162, 163



- Series 160, 162, 163 DIL Headers are equipped with slotted heads to accept wires or component leads.
- Terminations are pluggable .018" diameter solder tails (M-M# 0282), see page 174 for details; or two-level wraposts, (M-M# 1106) see page 185 for details.



Total number of pins				Quantity per tube	Ordering Information		
	A	B	C		Solder Tail	2 Level Wrapost L = .370	3 Level Wrapost L = .510
	10	0.5	0.2		0.3	41	160-XX-210-00-001
4	0.2	0.3	0.4	102	160-XX-304-00-001	162-XX-304-00-001	163-XX-304-00-001
6	0.3	0.3	0.4	67	160-XX-306-00-001	162-XX-306-00-001	163-XX-306-00-001
8	0.4	0.3	0.4	50	160-XX-308-00-001	162-XX-308-00-001	163-XX-308-00-001
10	0.5	0.3	0.4	40	160-XX-310-00-001	162-XX-310-00-001	163-XX-310-00-001
14	0.7	0.3	0.4	28	160-XX-314-00-001	162-XX-314-00-001	163-XX-314-00-001
16	0.8	0.3	0.4	25	160-XX-316-00-001	162-XX-316-00-001	163-XX-316-00-001
18	0.9	0.3	0.4	22	160-XX-318-00-001	162-XX-318-00-001	163-XX-318-00-001
20	1.0	0.3	0.4	20	160-XX-320-00-001	162-XX-320-00-001	163-XX-320-00-001
22	1.0	0.3	0.4	18	160-XX-322-00-001	162-XX-322-00-001	163-XX-322-00-001
24	1.2	0.3	0.4	16	160-XX-324-00-001	162-XX-324-00-001	163-XX-324-00-001
28	1.4	0.3	0.4	14	160-XX-328-00-001	162-XX-328-00-001	163-XX-328-00-001
20	1.0	0.4	0.5	20	160-XX-420-00-001	162-XX-420-00-001	163-XX-420-00-001
22	1.1	0.4	0.5	18	160-XX-422-00-001	162-XX-422-00-001	163-XX-422-00-001
24	1.2	0.4	0.5	16	160-XX-424-00-001	162-XX-424-00-001	163-XX-424-00-001
28	1.4	0.4	0.5	14	160-XX-428-00-001	162-XX-428-00-001	163-XX-428-00-001
32	1.6	0.4	0.5	12	160-XX-432-00-001	162-XX-432-00-001	163-XX-432-00-001
24	1.2	0.6	0.7	16	160-XX-624-00-001	162-XX-624-00-001	163-XX-624-00-001
28	1.4	0.6	0.7	14	160-XX-628-00-001	162-XX-628-00-001	163-XX-628-00-001
32	1.6	0.6	0.7	12	160-XX-632-00-001	162-XX-632-00-001	163-XX-632-00-001
36	1.8	0.6	0.7	11	160-XX-636-00-001	162-XX-636-00-001	163-XX-636-00-001
40	2.0	0.6	0.7	10	160-XX-640-00-001	162-XX-640-00-001	163-XX-640-00-001
42	2.1	0.6	0.7	9	160-XX-642-00-001	162-XX-642-00-001	163-XX-642-00-001
48	2.4	0.6	0.7	8	160-XX-648-00-001	162-XX-648-00-001	163-XX-648-00-001
50	2.5	0.6	0.7	8	160-XX-650-00-001	162-XX-650-00-001	163-XX-650-00-001
52	2.6	0.6	0.7	7	160-XX-652-00-001	162-XX-652-00-001	163-XX-652-00-001
50	2.5	0.9	1.0	8	160-XX-950-00-001	162-XX-950-00-001	163-XX-950-00-001
52	2.6	0.9	1.0	7	160-XX-952-00-001	162-XX-952-00-001	163-XX-952-00-001
64	3.2	0.9	1.0	6	160-XX-964-00-001	162-XX-964-00-001	163-XX-964-00-001
SPECIFY PLATING CODE XX=					10	90	
Pin Plating					10μ" Au	200μ" Sn/Pb	