



Me PM2.5 Sensor

SKU: 11048 Weight: 90.00 Gram

The PM2.5 sensor laser detect atmospheric PM2.5 with laser scattering theory. It features high-precision detection, rapid response and steady operation, with minimal errors. The sensor can detect a range of PM1.0 to PM10.

Features

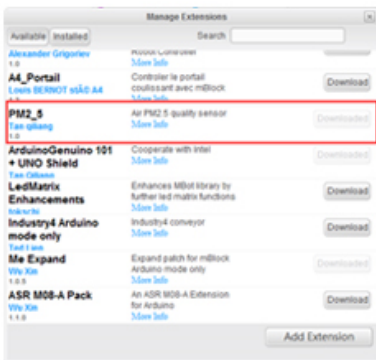
- Detect atmospheric PM2.5 with laser scattering theory
- High-precision detection, rapid response and operation, with minimal errors
- Particulate Measurement Range: 0.3 ~ 10 μm
- Support mBlock GUI programming
- Adopt RJ25 port for easy connection

mBlock – PM2.5 Gas Sensor Extended

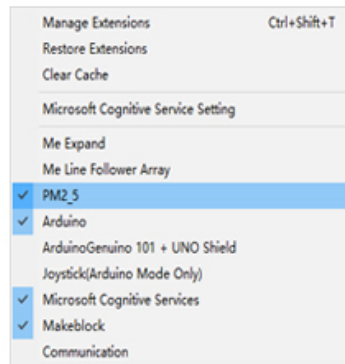
Instructions

Me PM2.5 sensor supports mBlock programming. If you use the PM2.5 sensor by mBot (mCore mainboard), then you need to install a custom firmware. To install custom firmware, [Click here](#).

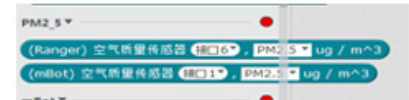
After installing the firmware, refer to the following procedure to use the PM2.5 sensor.



Step 1: Run mBlock software. Under the Extensions menu, select extensions manager. Then download PM2_5;



Step 2: After download , make sure the PM2.5 extension is selected under the Extensions menu;



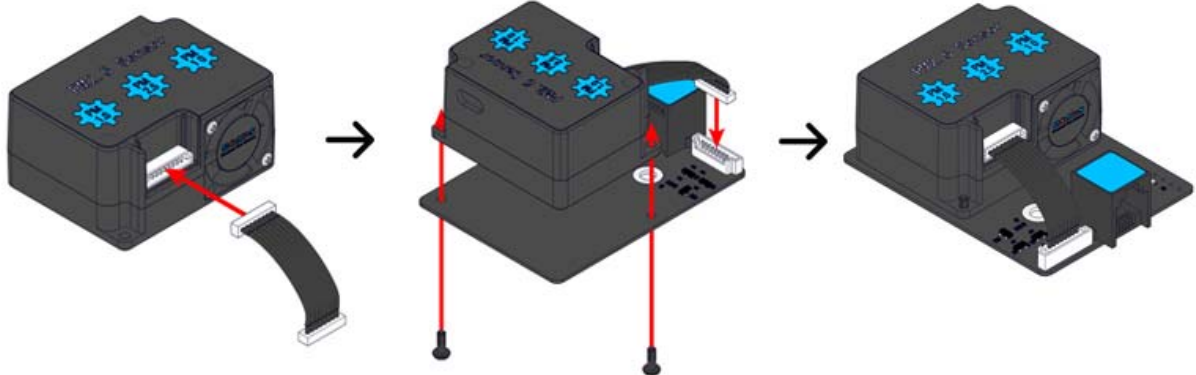
Step 3: Use the block;

Performance Parameters

- Supply Voltage: 5V DC
- Operating Temperature: -10°C ~ 65°C
- Control Mode: Dual-Digital Interface Control
- Particulate Measurement Range: 0.3 ~ 10 um
- Dimensions (L x W x H)48mm*65mm*24mm



Assembly Procedure



Step 1

1 × PM2.5 Sensor

1 × PM2.5 Cable

Step 2

1 × PM2.5 Sensor Circuit Board

2 × Black Rivets

Completed Form



PM2.5 Sensor Schematic Diagram

Click here to download. http://download.makeblock.com/Me%20PM2.5%20Sensor%20V2_PCB.pdf

