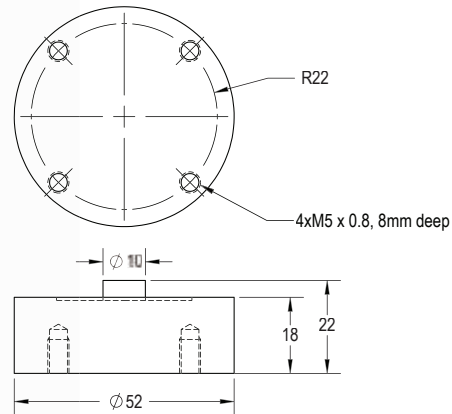


RSB2 Alloy Steel Low Profile Load Cell



(All dimensions in mm)

Wiring Information

Cable Color Code	
Red	+ Excitation
Black	- Excitation
Green	+ Signal
White	- Signal

Accuracy Specifications

Accuracy	
Non-linearity	$\pm 0.05\%$ of Full Scale
Hysteresis	$\pm 0.05\%$ of Full Scale
Non-repeatability	$\pm 0.05\%$ of Full Scale

Ordering Information

Multiple Load Cell Capacities	
RSB2	Part No.
25 kilogram	RSB2-25M-S
50 kilogram	RSB2-50M-S
100 kilogram	RSB2-100M-S
250 kilogram	RSB2-250M-S
500 kilogram	RSB2-500M-S
1000 kilogram	RSB2-01KM-S

Load Cell Specifications

Zero Balance	$\pm 2\%$
Safe Overload	to 150% of capacity (300% Ultimate Overload)
Rated Excitation	10V DC (15V Maximum)
Full Scale Output	2 mV/V
Connections	3m Cable
Input Impedance	$750 \pm 30 \Omega$
Output Impedance	$700 \pm 5 \Omega$
Insulation	$> 2,000 M\Omega$
Creep, in 30 min	$\pm 0.03\%$ of Load
Operating Temperature Range	-20°C to 60°C with TARE
Temperature Effect on Output	0.02% of Full Scale/ 10°C
Temperature Effect on Zero	0.05% of Full Scale/ 10°C
Seal Type	IP66

Calibration Options

*C01	Compression
------	-------------

Compatible Accessories

Recommended Interfaces



DI-100U/DI-1000U
Digital Load Cell Interface



DI-1000Z
Wireless Load Cell Interface



AI-1000
Signal Conditioner



RD-1000
Resistive Load Cell Display

Wireless Load Cell Configuration



USB Load Cell Configuration



Analog Load Cell Configuration



Load Cell with LED Display

