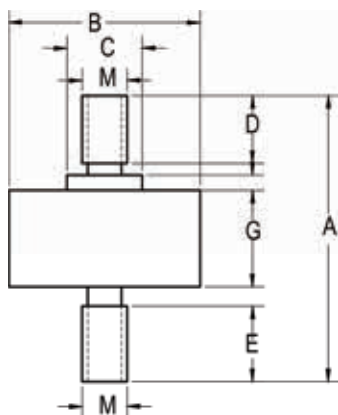


REB7 Subminiature LOAD CELL - Universal (Compression, Tension or both)



Capacity	1 kg	2 kg	5 kg	10 kg	100 kg
A	33.5	30	37	38.2	38.2
B	25.5	25.5	25.5	25.5	25.5
C	5	10	10	10	10
D	9	6	9	11.25	10.5
E	8	8	11	10	9.5
F	1	1	2	2	2
G	13.5	13.5	13	13	13
M	M3	M3	M5	M5	M6

(All dimensions in mm)

Accuracy Specifications at 25°C

Accuracy	
Non-linearity	± 0.1% of Full Scale
Hysteresis	± 0.1% of Full Scale
Non-repeatability	± 0.1% of Full Scale
Overall Accuracy	± 0.5% - 1% of Full Scale

Load Cell Specifications

Typical Value	
Zero Balance	2% of Full Scale
Safe Overload	150% of Full Scale
Ultimate Overload	200% of Full Scale
Full Scale Output	~ 0.5 mV/V (1 kg)
	~ 1 mV/V (10 kg)
	~ 2 mV/V (100 kg)
Connections	5 ft. cable
Input Impedance	350 ± 10 Ω
Insulation	≥ 5000 M Ω / 50 V DC
Excitation Voltage	5 - 10 V DC
Compensated Temperature Range	14 to 100 °F (-10 to 40 °C)
Temperature Effect on Zero	0.01% of F.S. / °C
Temperature Effect on Span	0.01% of F.S. / °C
Creep (30 min)	0.1% F.S. / 30 min

Recommended Interfaces



DI-100/DI-1000U
Digital Load Cell Interface



DI-1000Z
Wireless Load Cell Interface



AI-1000
Signal Conditioner



RD-1000
Resistive Load Cell Display

Wiring Information

Cable Color Code	
Red	+ Excitation
Black	- Excitation
Green	+ Signal
White	- Signal

Ordering Information

Capacity	Part No.
1 kg	REB7-001M-A
2 kg	REB7-002M-A
5 kg	REB7-005M-S
10 kg	REB7-010M-S
100 kg	REB7-100M-S

Compatible Interfaces

Type	Part No.
Digital - 16 bit	DI-100U/DI-1000UHS
Digital - 24 bit	DI-1000U/DI-1000UHS
Analog	AI-1000

Calibration Options

Mode	Part No.
Compression	*C01
Tension	*C02

Wireless Load Cell Configuration



USB Load Cell Configuration



Analog Load Cell Configuration

