

PENTA-5-M lens for Cree XP-E LEDs



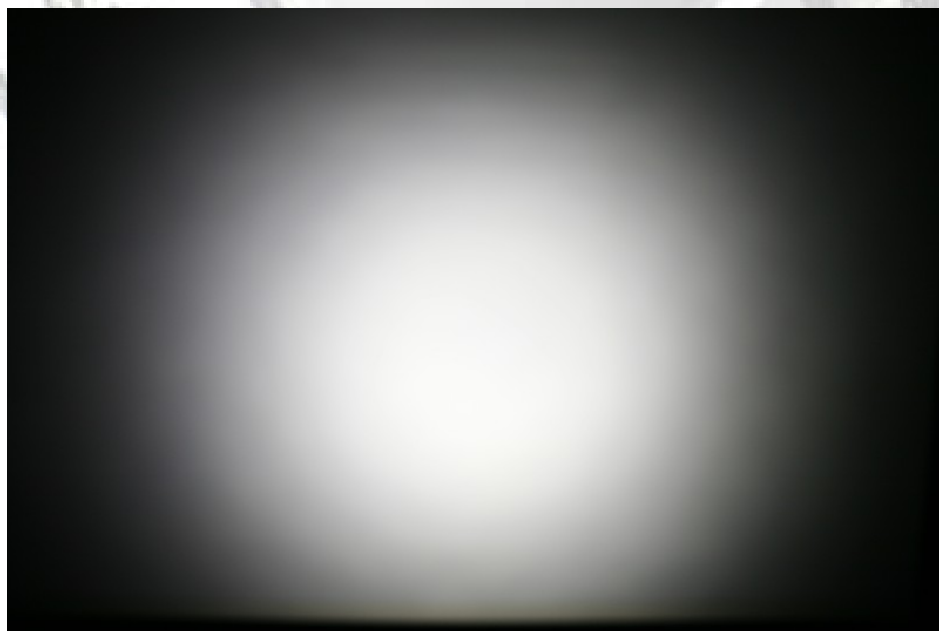
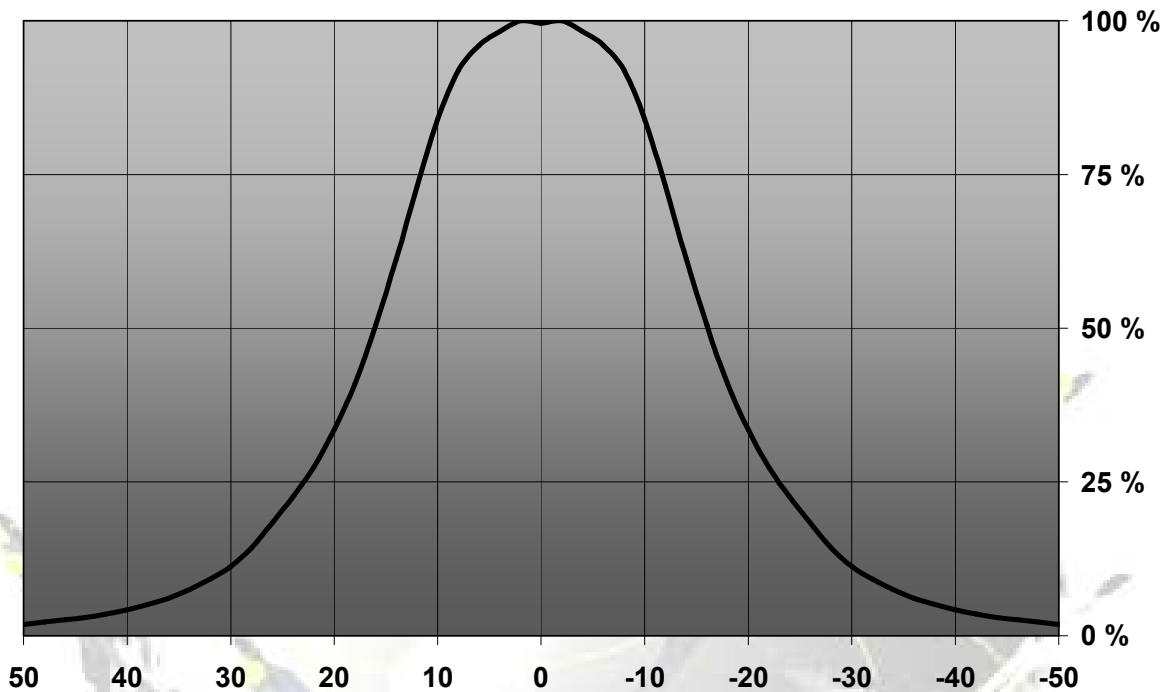
- Lens material optical grade PMMA with high UV and temperature resistance (105°C/220°F)
- High optical efficiency, >85%
- No lens holder. Snap-fitting of the lens to customer's heat sink. Please contact us for detailed mounting information
- Diameter 35.6 mm (MR11)

LENS TYPES

NAME	ORDERING CODE	FWHM Angle
PENTA-5 medium	F10390_Penta-5-XP	±16°

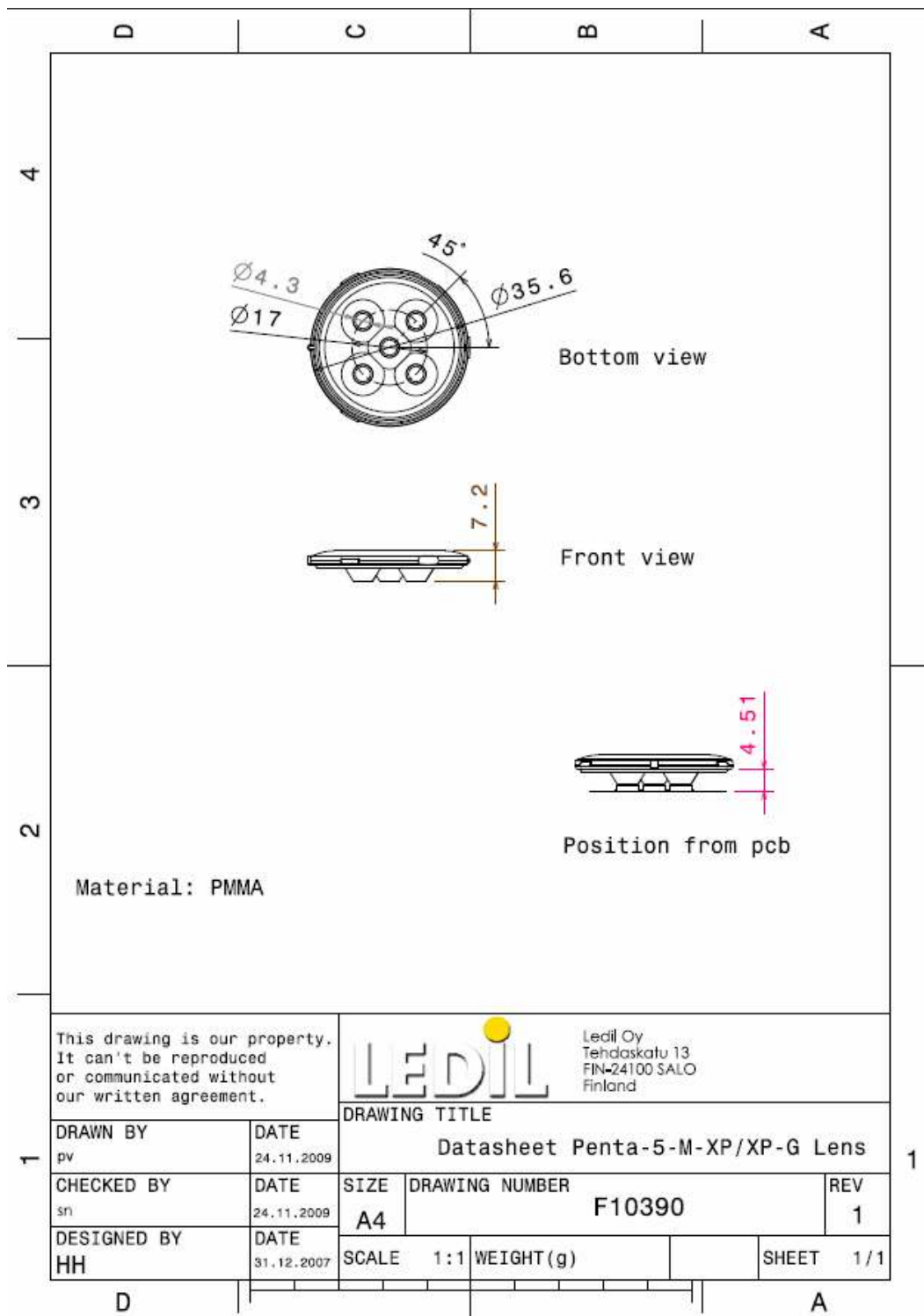
MEASUREMENT DATA & PHOTOGRAPHS

Relative Intensity of F10390_Penta-5-M-XP



© Ledil Oy – PRELIMINARY - Subject to change without prior notice

DRAWING



© Ledil Oy – PRELIMINARY - Subject to change without prior notice