

DAISY-4X1-W

~50° wide beam

TECHNICAL SPECIFICATIONS:

| | |
|----------------|-------------------|
| Dimensions | 182.0 x 40.0 mm |
| Height | 20.2 mm |
| Fastening | pin, screw, clips |
| ROHS compliant | yes ⓘ |

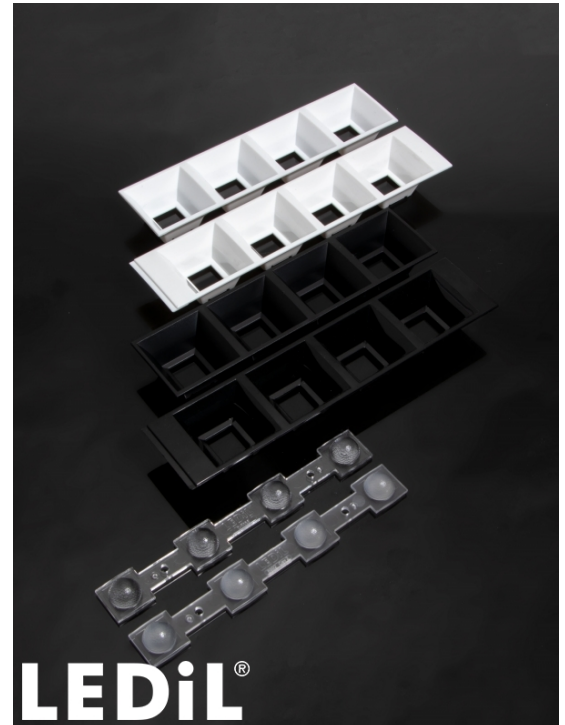
MATERIAL SPECIFICATIONS:

| Component | Type | Material | Colour | Finish |
|--------------------------------|-------------|----------|--------|--------|
| C16588_DAISY-4X1-W | Linear lens | PMMA | clear | |
| C17423_DAISY-4X1-SHD2-WHT-MATT | Shade | PC | white | matt |
| C17528_DAISY-4X1-SHD-MET | Shade | PC-ABS | metal | gloss |
| C17535_DAISY-4X1-SHD2-MET-MATT | Shade | PC | metal | matt |
| C16590_DAISY-4X1-SHD | Shade | PC-ABS | black | gloss |
| C16784_DAISY-4X1-SHD-WHT | Shade | PC | white | gloss |
| C17422_DAISY-4X1-SHD2-MATT | Shade | PC | black | matt |

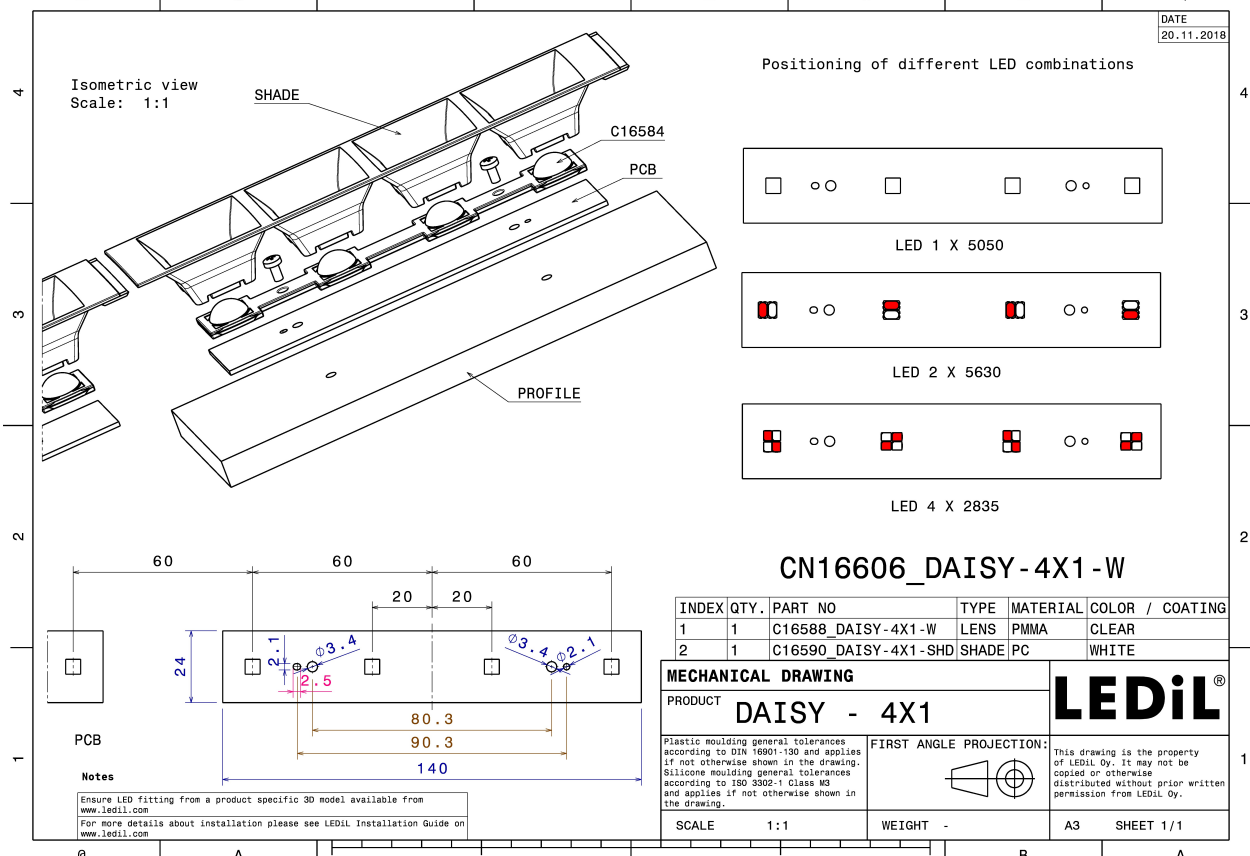
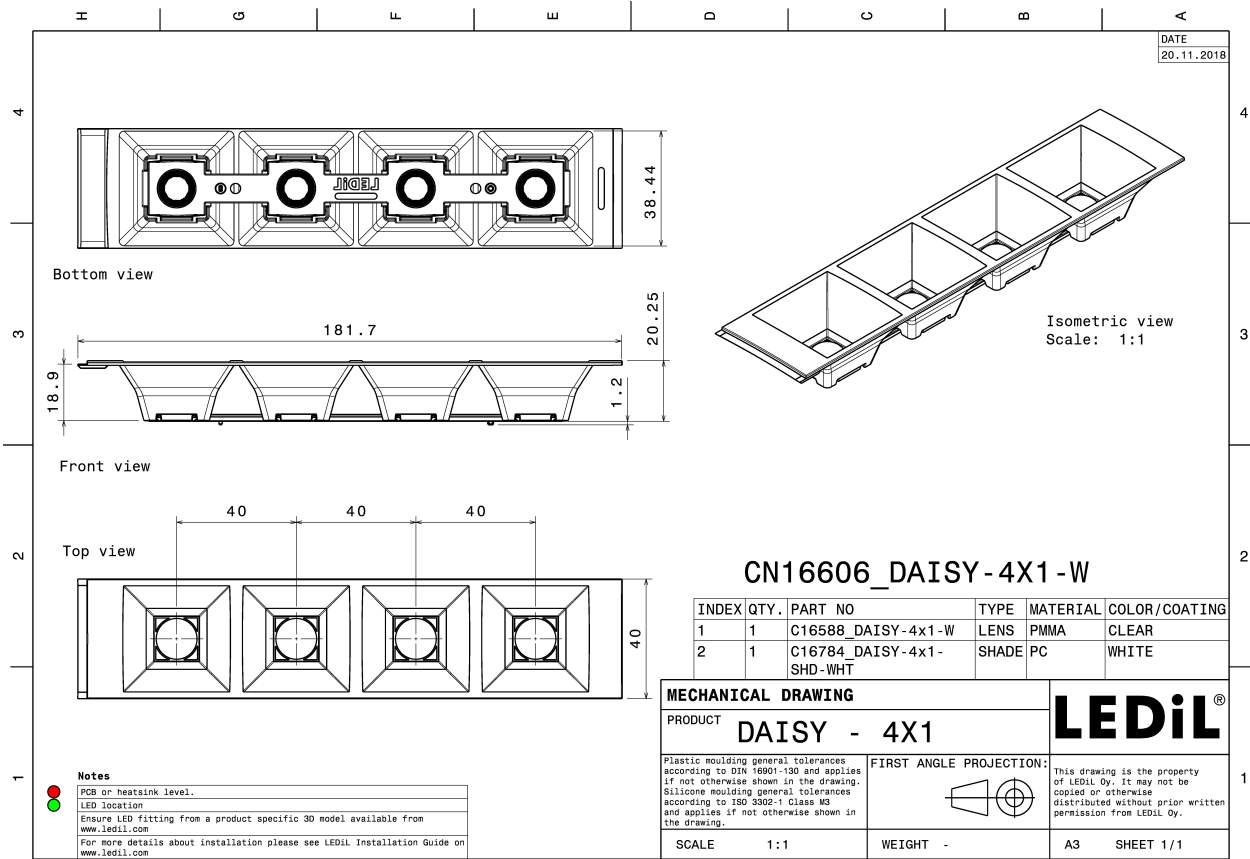
ORDERING INFORMATION:

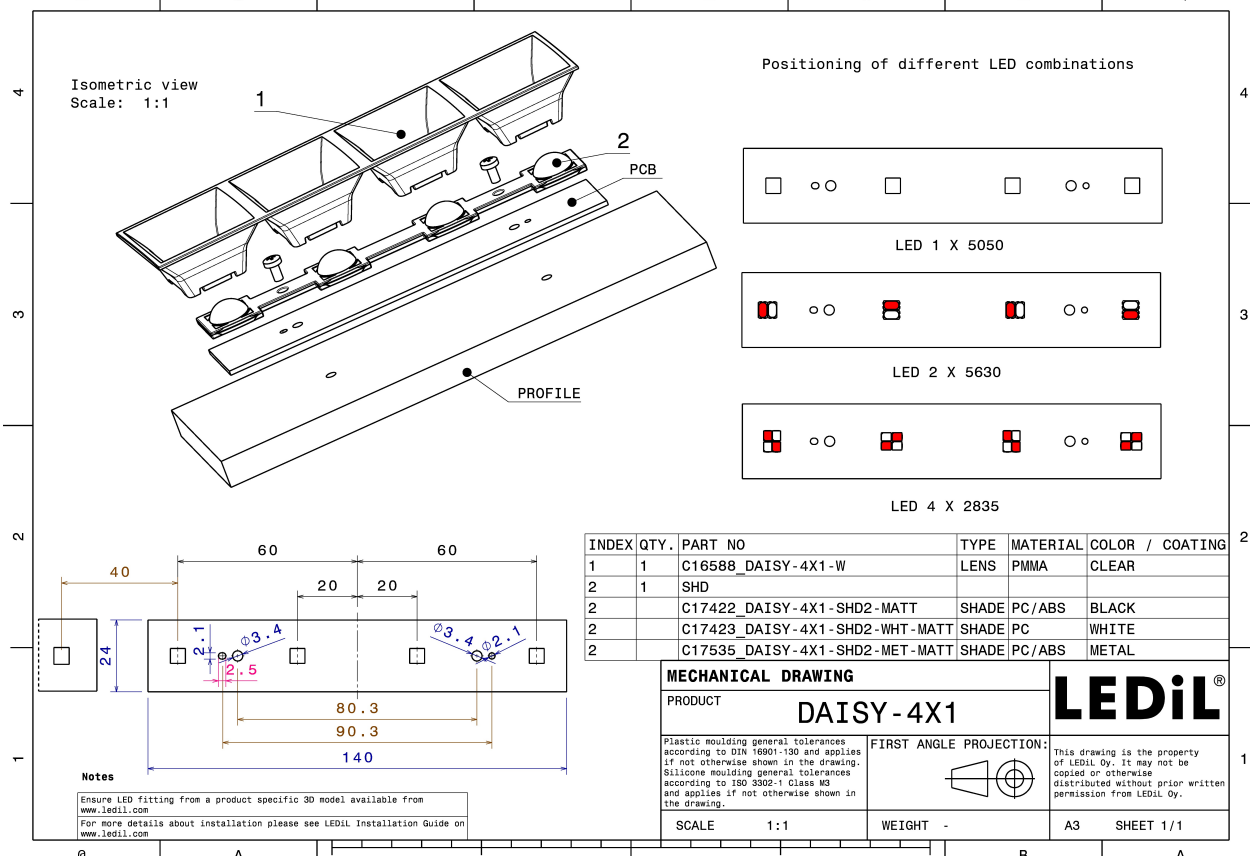
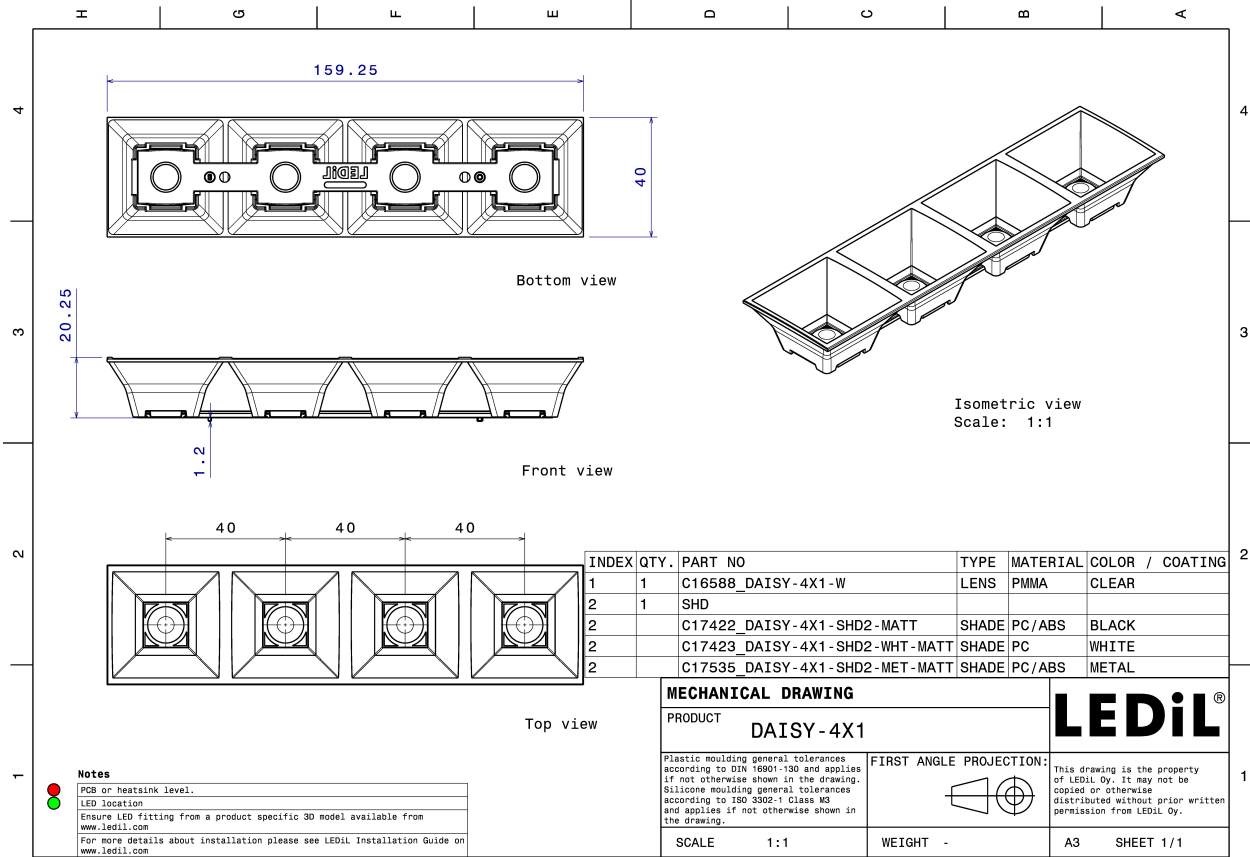
Quantities for one set:

| | |
|-------------|---|
| Linear lens | 1 |
| Shade | 1 |



| Component | | Qty in box | MOQ | MPQ | Box weight (kg) |
|--------------------------------|-------------|------------|-----|-----|-----------------|
| C16588_DAISY-4X1-W | Linear lens | 504 | 336 | 21 | 6.3 |
| » Box size: 480 x 280 x 300 mm | | | | | |
| C16590_DAISY-4X1-SHD | Shade | 168 | 336 | 42 | 4.3 |
| » Box size: 480 x 280 x 300 mm | | | | | |
| C17528_DAISY-4X1-SHD-MET | Shade | 168 | 336 | 42 | |
| » Box size: 480 x 280 x 300 mm | | | | | |
| C16784_DAISY-4X1-SHD-WHT | Shade | 168 | 336 | 42 | 4.3 |
| » Box size: 480 x 280 x 300 mm | | | | | |
| C17535_DAISY-4X1-SHD2-MET-MATT | Shade | 168 | 336 | 42 | |
| » Box size: 480 x 280 x 300 mm | | | | | |
| C17422_DAISY-4X1-SHD2-MATT | Shade | 168 | 336 | 42 | 4.1 |
| » Box size: 480 x 280 x 300 mm | | | | | |
| C17423_DAISY-4X1-SHD2-WHT-MATT | Shade | 168 | 336 | 42 | 4.4 |
| » Box size: 480 x 280 x 300 mm | | | | | |



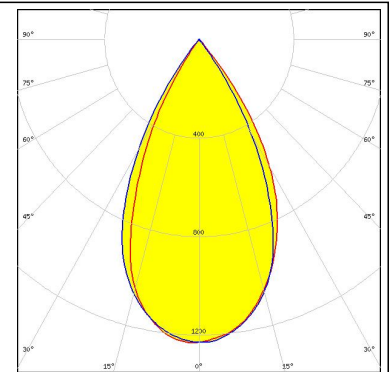


PHOTOMETRIC DATA (MEASURED):

MST

Your solutions

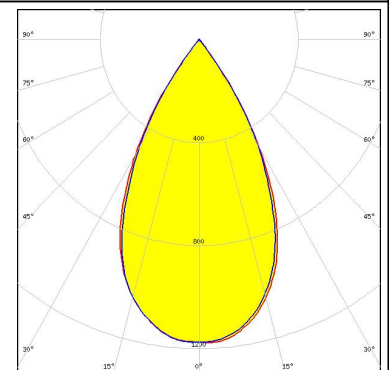
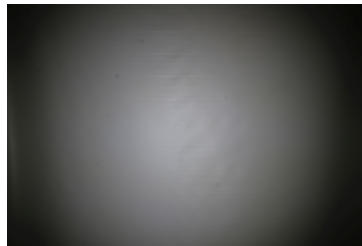
LED LinLED 156x28mm 2x200lm 827-865 2x2C 12V
 FWHM 54.0°
 Efficiency 90 %
 Peak intensity 1.2 cd/lm
 LEDs/each optic 1
 Light colour White
 Required components:
 C16590_DAISY-4X1-SHD



MST

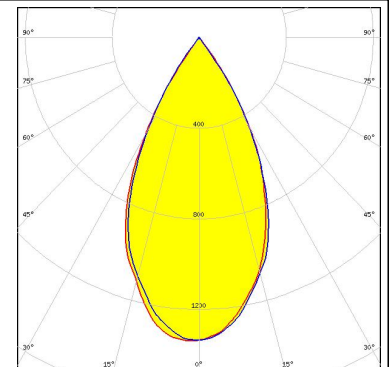
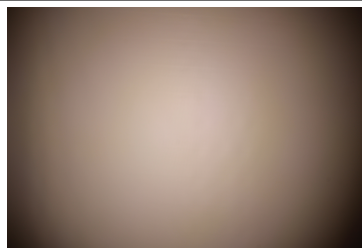
Your solutions

LED LinLED 156x28mm 400lm 8x0 2C 12V Opt G1
 FWHM 56.0°
 Efficiency 90 %
 Peak intensity 1.2 cd/lm
 LEDs/each optic 1
 Light colour White
 Required components:
 C16590_DAISY-4X1-SHD



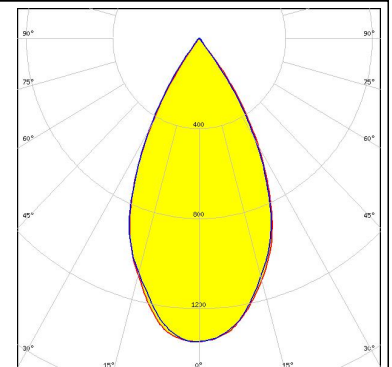
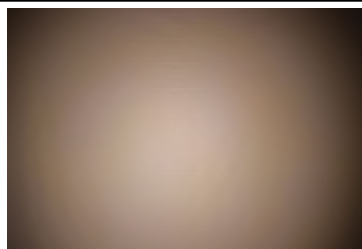
NICHIA

LED NF2W757G-MT (Tunable White)
 FWHM 53.0°
 Efficiency 91 %
 Peak intensity 1.3 cd/lm
 LEDs/each optic 1
 Light colour Tunable White
 Required components:
 C16590_DAISY-4X1-SHD



NICHIA

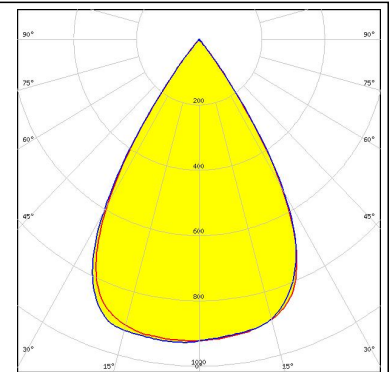
LED NF2W757G-MT (Tunable White)
 FWHM 53.0°
 Efficiency 96 %
 Peak intensity 1.3 cd/lm
 LEDs/each optic 1
 Light colour Tunable White
 Required components:
 C16784_DAISY-4X1-SHD-WHT



PHOTOMETRIC DATA (MEASURED):

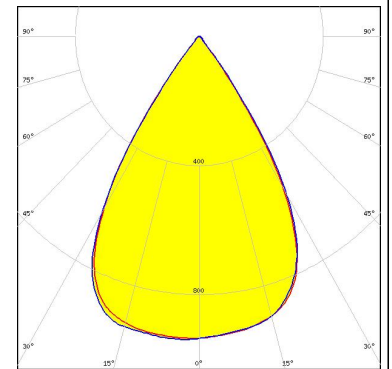
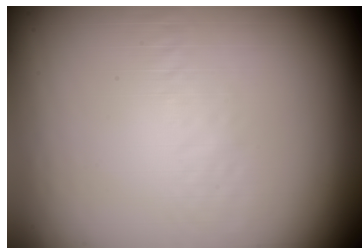
SAMSUNG

LED LM28xB Series
 FWHM 64.0°
 Efficiency 89 %
 Peak intensity 0.9 cd/lm
 LEDs/each optic 4
 Light colour White
 Required components:
 C16590_DAISSY-4X1-SHD



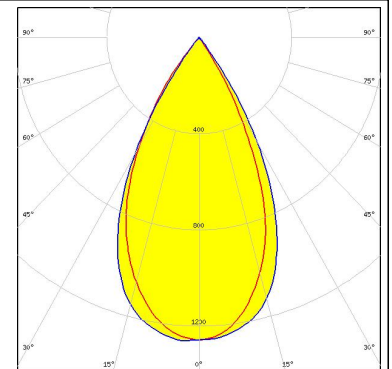
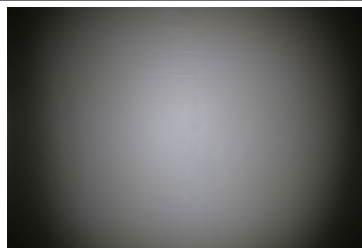
SAMSUNG

LED LM28xB Series
 FWHM 64.0°
 Efficiency 94 %
 Peak intensity 0.9 cd/lm
 LEDs/each optic 4
 Light colour White
 Required components:
 C16784_DAISSY-4X1-SHD-WHT



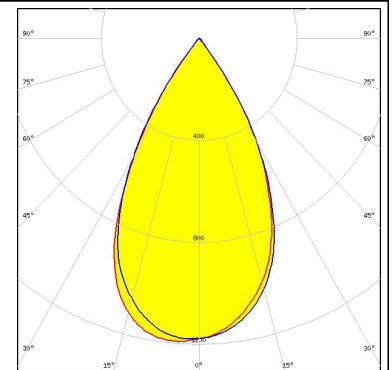
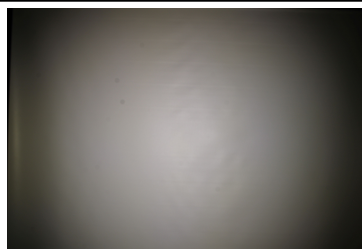
SAMSUNG

LED LM28xB Series
 FWHM 54.0°
 Efficiency 91 %
 Peak intensity 1.3 cd/lm
 LEDs/each optic 1
 Light colour White
 Required components:
 C17422_DAISSY-4X1-SHD2-MATT



SAMSUNG

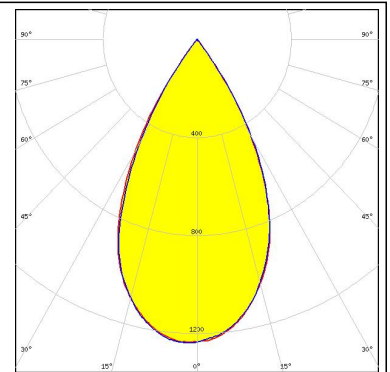
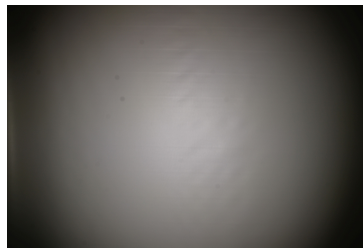
LED LM28xB Series
 FWHM 56.0°
 Efficiency 94 %
 Peak intensity 1.2 cd/lm
 LEDs/each optic 2
 Light colour White
 Required components:
 C16784_DAISSY-4X1-SHD-WHT



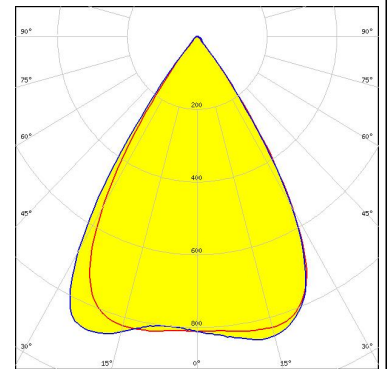
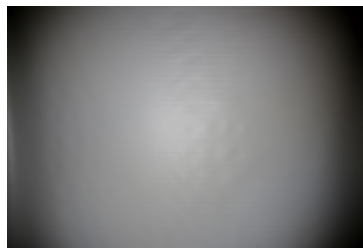
PHOTOMETRIC DATA (MEASURED):

SAMSUNG

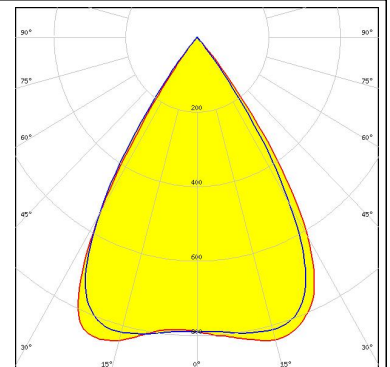
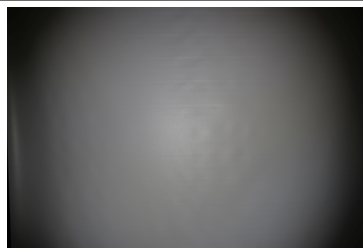
LED LM28xB Series
 FWHM 55.0°
 Efficiency 91 %
 Peak intensity 1.2 cd/lm
 LEDs/each optic 2
 Light colour White
 Required components:
 C16590_DAISY-4X1-SHD



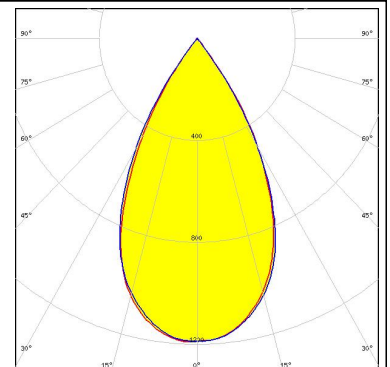
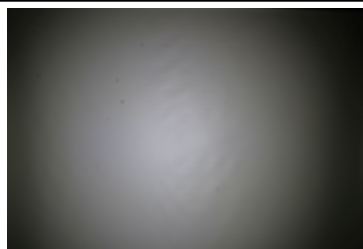
SEOUL SEMICONDUCTOR
 LED SEOUL DC 3030
 FWHM 66.0°
 Efficiency 92 %
 Peak intensity 0.9 cd/lm
 LEDs/each optic 4
 Light colour Tunable White
 Required components:
 C16784_DAISY-4X1-SHD-WHT





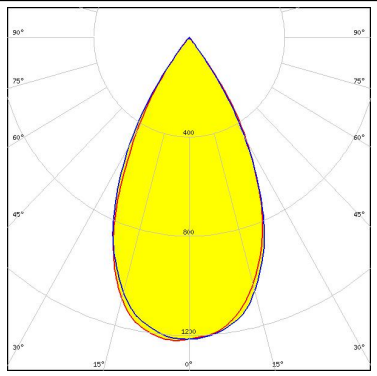


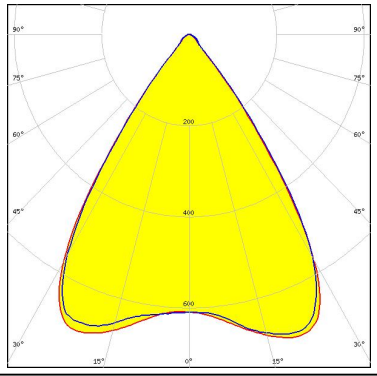

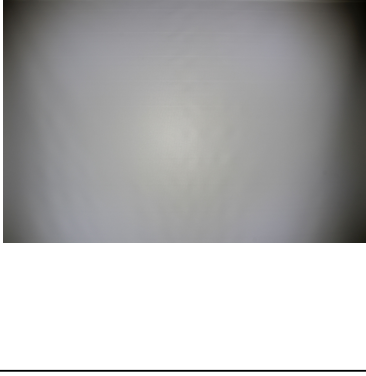
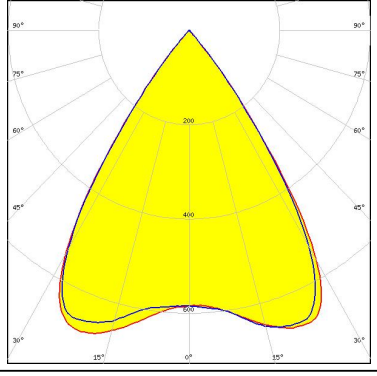


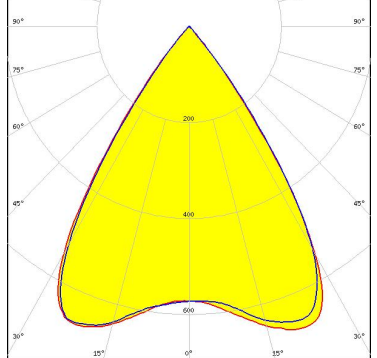
SEOUL SEMICONDUCTOR
 LED SEOUL DC 3030
 FWHM 65.0°
 Efficiency 86 %
 Peak intensity 0.9 cd/lm
 LEDs/each optic 4
 Light colour Tunable White
 Required components:
 C16590_DAISY-4X1-SHD



SEOUL SEMICONDUCTOR
 LED SEOUL DC 3528
 FWHM 56.0°
 Efficiency 90 %
 Peak intensity 1.2 cd/lm
 LEDs/each optic 2
 Light colour White
 Required components:
 C16590_DAISY-4X1-SHD



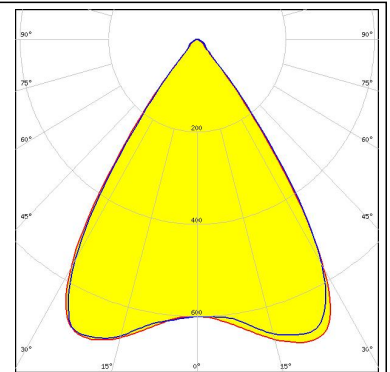
PHOTOMETRIC DATA (MEASURED):

| | | |
|--|--|---|
| <p> SEOUL SEMICONDUCTOR</p> <p>LED: SEOUL DC 3528 FWHM: 54.0° Efficiency: 90 % Peak intensity: 1.2 cd/lm LEDs/each optic: 2 Light colour: White Required components: C16590_DAISY-4X1-SHD</p> |  |  |
| <p> TEPCOMP group</p> <p>LED: PassivePAQ-L-0.5F35-SSA3-1.6K-840-3-DC FWHM: 69.0° Efficiency: 91 % Peak intensity: 0.8 cd/lm LEDs/each optic: 4 Light colour: White Required components: C17423_DAISY-4X1-SHD2-WHT-MATT</p> |  |  |
| <p> TEPCOMP group</p> <p>LED: PassivePAQ-L-0.5F35-SSA3-1.6K-840-3-DC FWHM: 69.0° Efficiency: 83 % Peak intensity: 0.8 cd/lm LEDs/each optic: 4 Light colour: White Required components: C17422_DAISY-4X1-SHD2-MATT</p> |  |  |
| <p> TEPCOMP group</p> <p>LED: PassivePAQ-L-0.5F35-SSA3-1.6K-840-3-DC FWHM: 69.0° Efficiency: 82 % Peak intensity: 0.8 cd/lm LEDs/each optic: 4 Light colour: White Required components: C16590_DAISY-4X1-SHD</p> |  |  |

PHOTOMETRIC DATA (MEASURED):

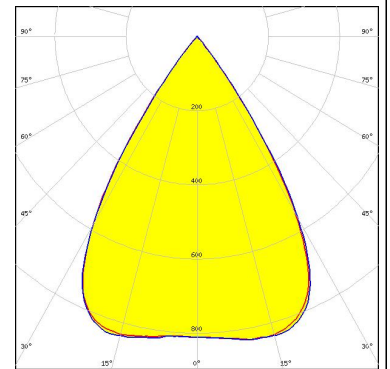
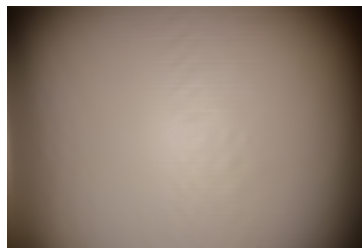


LED PassivePAQ-L-0.5F35-SSA3-1.6K-840-3-DC
 FWHM 69.0°
 Efficiency 92 %
 Peak intensity 0.8 cd/lm
 LEDs/each optic 4
 Light colour White
 Required components:
 C16784_DAISY-4X1-SHD-WHT



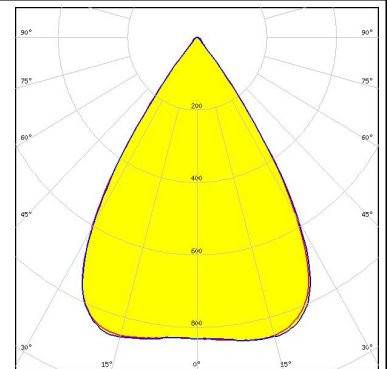
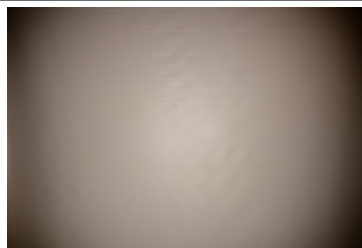
TRIDONIC

LED LLE 24x140mm 400lm 827-865 LVD ADV1
 FWHM 66.0°
 Efficiency 88 %
 Peak intensity 0.9 cd/lm
 LEDs/each optic 4
 Light colour White
 Required components:
 C16590_DAISY-4X1-SHD



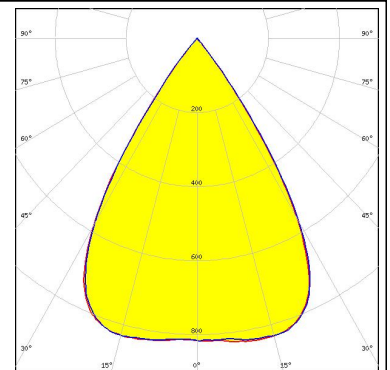
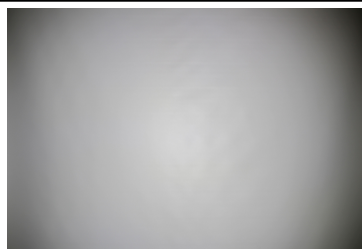
TRIDONIC

LED LLE 24x140mm 400lm 827-865 LVD ADV1
 FWHM 66.0°
 Efficiency 94 %
 Peak intensity 0.9 cd/lm
 LEDs/each optic 4
 Light colour White
 Required components:
 C16784_DAISY-4X1-SHD-WHT



TRIDONIC

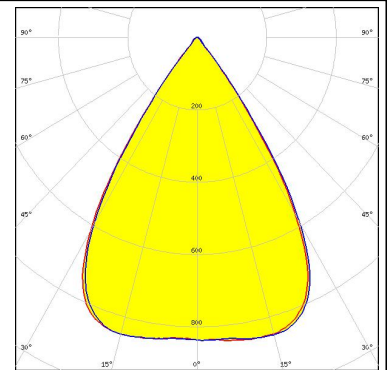
LED LLE 24x140mm 400lm 8x0 LVD ADV1
 FWHM 66.0°
 Efficiency 88 %
 Peak intensity 0.8 cd/lm
 LEDs/each optic 4
 Light colour White
 Required components:
 C16590_DAISY-4X1-SHD



PHOTOMETRIC DATA (MEASURED):

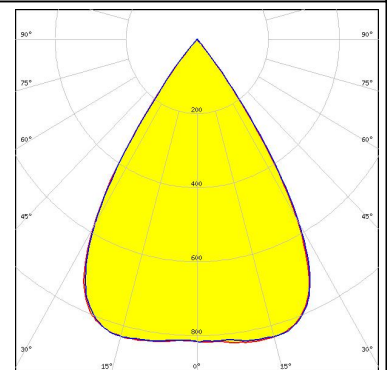
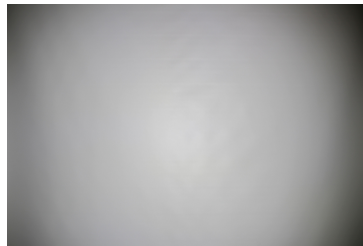
TRIDONIC

LED LLE 24x140mm 400lm 8x0 LVD ADV1
FWHM 66.0°
Efficiency 94 %
Peak intensity 0.9 cd/lm
LEDs/each optic 4
Light colour White
Required components:
C16784_DAISY-4X1-SHD-WHT



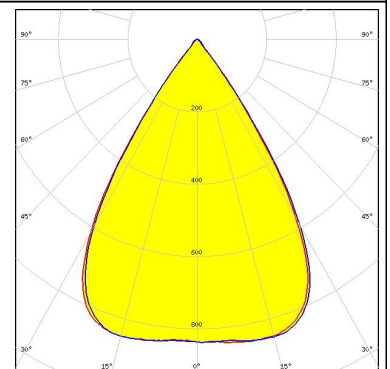
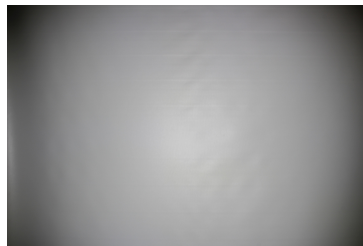
TRIDONIC

LED LLE 24x280mm 750lm 8x0 LVD ADV1
FWHM 66.0°
Efficiency 88 %
Peak intensity 0.9 cd/lm
LEDs/each optic 4
Light colour White
Required components:
C16590_DAISY-4X1-SHD

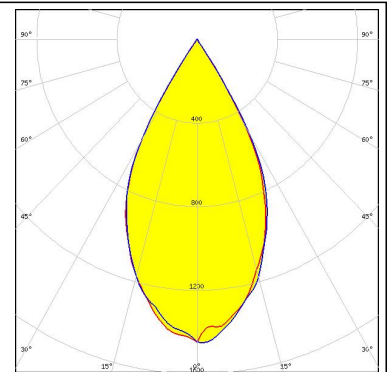
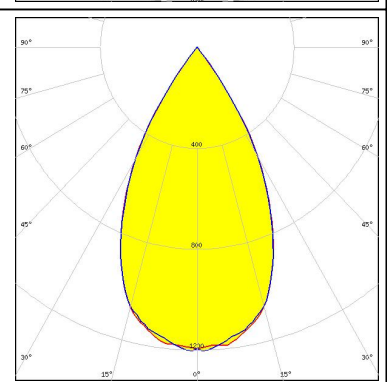
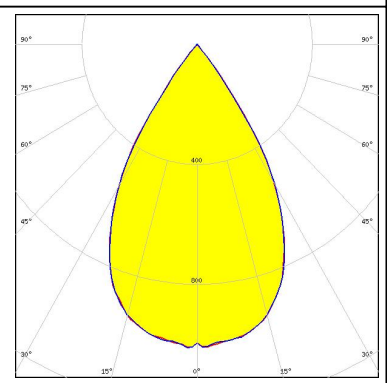
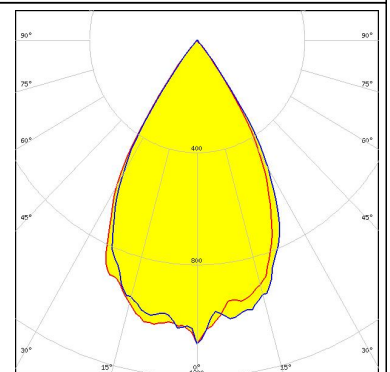


TRIDONIC

LED LLE 24x280mm 750lm 8x0 LVD ADV1
FWHM 66.0°
Efficiency 94 %
Peak intensity 0.9 cd/lm
LEDs/each optic 4
Light colour White
Required components:
C16784_DAISY-4X1-SHD-WHT



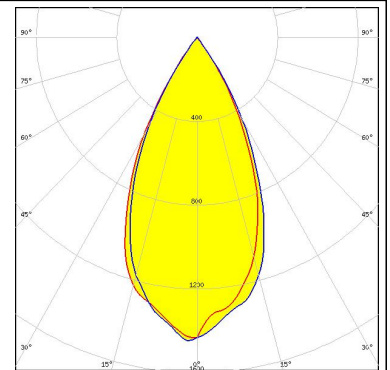
PHOTOMETRIC DATA (SIMULATED):

| | |
|---|---|
| <p>LUMILEDS</p> <p>LED LUXEON 5050 Round LES FWHM 54.0° Efficiency 92 % Peak intensity 1.5 cd/lm LEDs/each optic 1 Light colour White Required components: C16590_DAISY-4X1-SHD</p> |  |
| <p>NICHIA</p> <p>LED NF2W757G-MT (Tunable White) FWHM 56.0° Efficiency 91 % Peak intensity 1.2 cd/lm LEDs/each optic 2 Light colour Tunable White Required components: C16590_DAISY-4X1-SHD</p> |  |
| <p>NICHIA</p> <p>LED NF2W757G-MT (Tunable White) FWHM 62.0° Efficiency 90 % Peak intensity 1 cd/lm LEDs/each optic 4 Light colour Tunable White Required components: C16590_DAISY-4X1-SHD</p> |  |
| <p>NICHIA</p> <p>LED NF2x757G FWHM 60.0° Efficiency 90 % Peak intensity 1.1 cd/lm LEDs/each optic 4 Light colour White Required components: C16590_DAISY-4X1-SHD</p> |  |

PHOTOMETRIC DATA (SIMULATED):

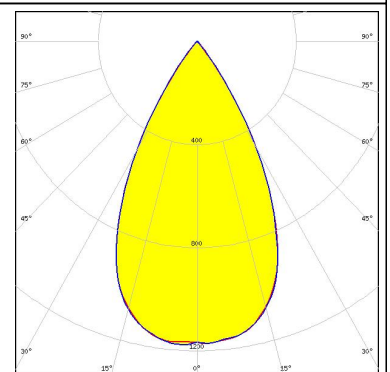


LED NF2x757G
FWHM 50.0°
Efficiency 92 %
Peak intensity 1.5 cd/lm
LEDs/each optic 1
Light colour White
Required components:
C16590_DAISY-4X1-SHD



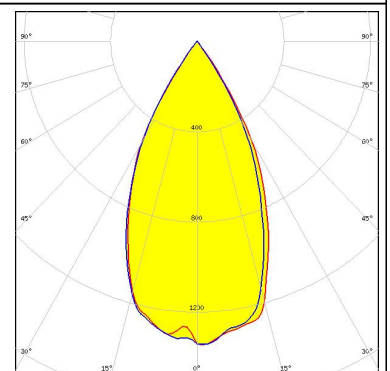
Osram Semiconductors

LED Duris S8
FWHM 56.0°
Efficiency 92 %
Peak intensity 1.2 cd/lm
LEDs/each optic 1
Light colour White
Required components:
C16784_DAISY-4X1-SHD-WHT



Osram Semiconductors

LED Duris S8
FWHM 52.0°
Efficiency 91 %
Peak intensity 1.4 cd/lm
LEDs/each optic 1
Light colour White
Required components:
C16590_DAISY-4X1-SHD



GENERAL INFORMATION:

NOTE: The typical beam angle will be changed by different color, chip size and chip position tolerance. The typical total beam angle is the full angle measured where the luminous intensity is half of the peak value.

MATERIALS:

As part of our continuous research and improvement processes, and to ensure the best possible quality and availability of our products, LEDiL reserves the right to change material grades without notice.

PRODUCT DATA USER AGREEMENT AND DISCLAIMER:

The measured data in the provided downloadable LEDiL Product Datasheets and Mechanical 2D-Drawings is rounded and provided as reference for planning. LEDiL Oy's optical specifications have been verified by conducting performance testing of the products in accordance with the company's quality system. The reported data are averaged results of multiple measurements with typical variation. LEDiL Oy reserves the right to without prior notification make changes and improvements to its products.

LEDiL Oy assumes neither warranty, nor guarantee nor any other liability of any kind for the contents and correctness of the provided data. The provided data has been generated with highest diligence but the provided data may in reality not represent the complete possible variation range of all intrinsic parameters. Therefore, in certain cases a deviation from the provided data could occur.

LEDiL Oy reserves the right to undertake technical changes of its products without further notification which could lead to changes in the provided data. LEDiL Oy assumes no liability of any kind for the possible deviation from any provided data or any other damage resulting from the usage of the provided data.

The user agrees to this disclaimer and user agreement with the download or usage of the provided files.

LEDiL Oy

Joensuunkatu 13
FI-24240 SALO
Finland

LEDiL Inc.

228 West Page Street
Suite D
Sycamore IL 60178
USA

Local sales and technical support

[www.ledil.com/
where_to_buy](http://www.ledil.com/where_to_buy)

Shipping locations

Salo, Finland
Hong Kong, China

Distribution Partners

[www.ledil.com/
where_to_buy](http://www.ledil.com/where_to_buy)