



RoHS Compliant

### Features

- Crystal unit for Consumer Products
- Small and low profile (11.8×5.5×1.8mm)
- Ceramic package
- Reflow compatible

### Applications

- Digital Electronics
- Consumer Products
- Car audio and accessories

### How to Order

CX1255GB 04000

①                      ②                      ③                      ④                      ⑤                      ⑥                      ⑦

- ① Series                      ② Frequency  
③ Load Capacitance    ④ Frequency Stability
- |           |       |      |          |                         |      |
|-----------|-------|------|----------|-------------------------|------|
| <b>H0</b> | 12 pF | Std. | <b>P</b> | $\pm 50 \times 10^{-6}$ | Std. |
|-----------|-------|------|----------|-------------------------|------|
- ⑤ Operating Temp. Range    ⑥ Frequency Temp. Stability
- |           |              |                         |      |
|-----------|--------------|-------------------------|------|
| <b>ES</b> | -10 to +70°C | $\pm 50 \times 10^{-6}$ | Std. |
|-----------|--------------|-------------------------|------|
- ⑦ Individual Specification

Packaging (Tape & Reel 1000 pcs./ reel)

### Specifications

Item	Symbol	Specification	Units	Remarks
Frequency Range	f <sub>nom</sub>	3500 to 28999	kHz	
Overtone Order	OT	Fundamental	—	
Load Capacitance	CL	12	pF	
Frequency Stability	f <sub>tol</sub>	±50	×10 <sup>-6</sup>	25°C±3°C
Motional Series Resistance	R1	Table 1	ohm	
Drive Level	DL	Table 2	μW	
Operating Temp. Range	T <sub>use</sub>	-10 to +70	°C	
Storage Temp. Range	T <sub>stg</sub>	-40 to +85	°C	
Frequency Temp. Characteristics	f <sub>tem</sub>	±50	×10 <sup>-6</sup>	Freq. deviation from the value at 25°C

• Please contact us for other specifications.

### Typical Frequencies and Part Numbers

Frequency (kHz)	Part Number
<b>3579.545</b>	CX1255GB03579H0PESZ1
<b>3686.400</b>	CX1255GB03686H0PESZ1
<b>4000.000</b>	CX1255GB04000H0PESZ1
<b>6000.000</b>	CX1255GB06000H0PESZ1
<b>8000.000</b>	CX1255GB08000H0PESZ1
<b>12000.000</b>	CX1255GB12000H0PESZ1
<b>14318.180</b>	CX1255GB14318H0PESZ1
<b>16000.000</b>	CX1255GB16000H0PESZ1
<b>16934.400</b>	CX1255GB16934H0PESZ1
<b>19660.800</b>	CX1255GB19660H0PESZ1
<b>20000.000</b>	CX1255GB20000H0PESZ1

### Table1 Motional Series Resistance

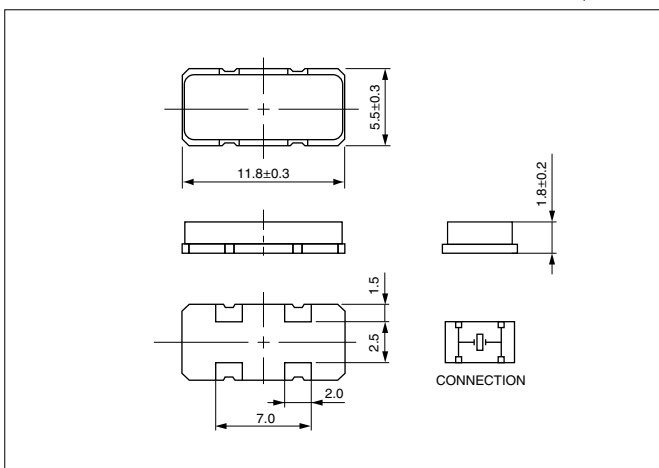
Frequency Range	Motional Series Resistance
3500 to 3999kHz	200Ω max.
4000 to 7999kHz	180Ω max.
8000 to 11999kHz	120Ω max.
12000 to 28999kHz	80Ω max.

### Table2 Level of Drive

Frequency Range	Level of Drive
3500 to 15999kHz	10μW (500μW max.)
16000 to 24999kHz	10μW (300μW max.)
25000 to 28999kHz	10μW (100μW max.)

### Dimensions

(Unit: mm)



### Recommended Land Pattern

(Unit: mm)

