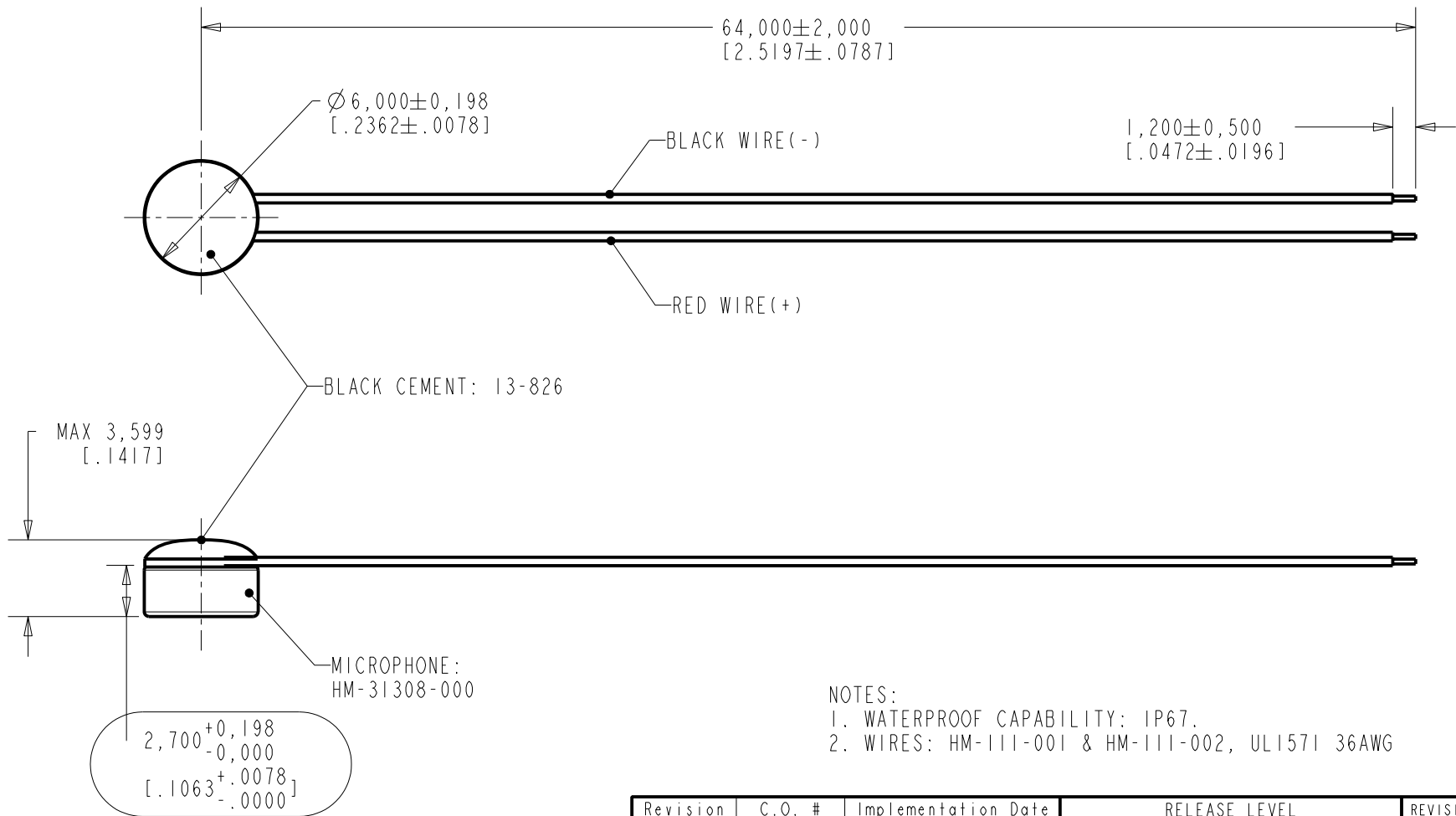


THE INFORMATION CONTAINED IN THIS LITERATURE IS BASED ON OUR EXPERIENCE TO DATE AND IS BELIEVED TO BE RELIABLE AND IT IS SUBJECT TO CHANGE WITHOUT NOTICE. IT IS INTENDED AS A GUIDE FOR USE BY PERSONS HAVING TECHNICAL SKILL AT THEIR OWN DISCRETION AND RISK. WE DO NOT GUARANTEE FAVORABLE RESULTS OR ASSUME ANY LIABILITY IN CONNECTION WITH ITS USE. DIMENSIONS CONTAINED HEREIN ARE FOR REFERENCE PURPOSES ONLY. FOR SPECIFIC DIMENSIONAL REQUIREMENTS CONSULT MANUFACTURER. THIS PUBLICATION IS NOT TO BE TAKEN AS A LICENSE TO OPERATE UNDER, OR RECOMMENDATION TO INFRINGE ANY EXISTING PATENTS. THIS SUPERSEDES AND VOIDS ALL PREVIOUS LITERATURE.

HM-31308-P113
SHT 1.1



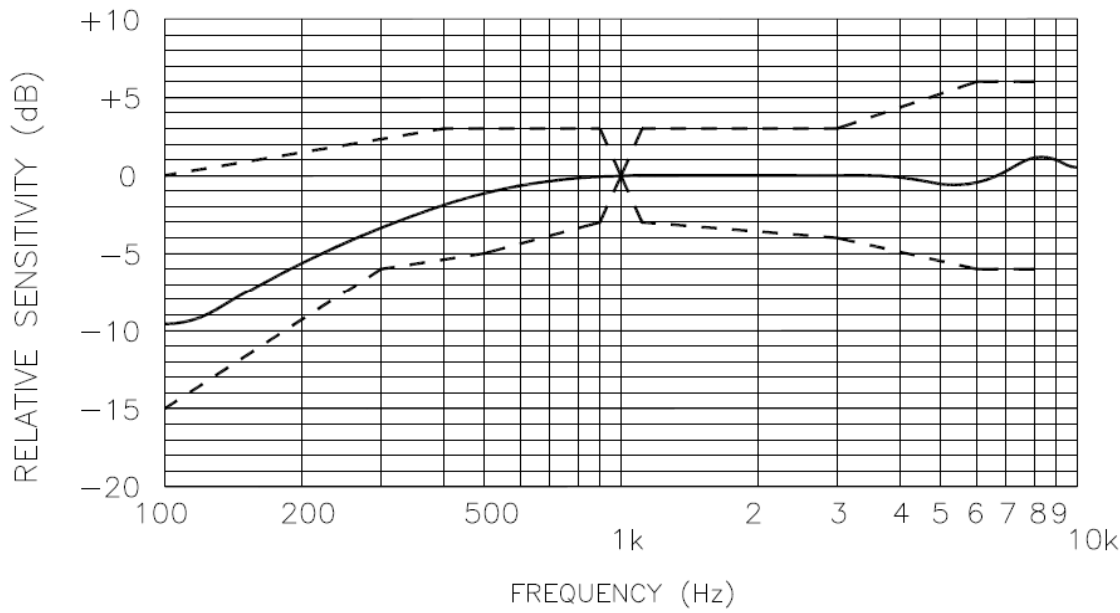
- NOTES:
1. WATERPROOF CAPABILITY: IP67.
2. WIRES: HM-111-001 & HM-111-002, UL1571 36AWG

DIMENSIONS IN MILLIMETERS [INCHES]

KNOWLES ACOUSTICS
ITASCA, ILLINOIS U.S.A.

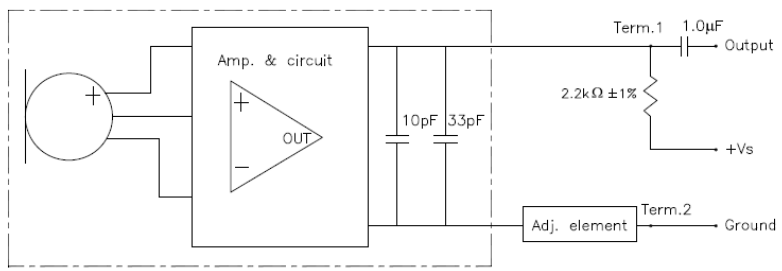
Revision	C.O. #	Implementation Date	RELEASE LEVEL	REVISION
			Active	A
A	C40100791	11-24-11		
SCALE: 3:1				
DO NOT SCALE DRAWING			DR. BY	DATE
TITLE: MICROPHONE ASSEMBLY			OO	11-24-11
			HM-31308-P113	
OUTLINE DRAWING			GJP	11-28-11
			APP. BY	DATE
			GJP	11-28-11
			SHT 1.1	

HM-31308-P113
 SHT 2.1



- NOTES:
1. SENSITIVITY: $-32 \pm 3\text{dB re } 1.0\text{V/Pa(N/m}^2\text{)}$ AT 1kHz $22 \pm 5^\circ\text{C}$.
 2. STANDARD VOLTAGE: 3.0V.
 3. CURRENT DRAIN: 0.5mA MAX.
 4. S/N RATIO: GREATER THAN OR EQUAL TO 62dB.
 5. IMPEDANCE: LESS THAN $0.5\text{k}\Omega$ (1kHz).
 6. RANGE OF OPERATING VOLTAGE: 2.5V TO 5.5V.
 7. MAXIMUM INPUT SOUND PRESSURE LEVEL: 100dB.
 8. SENSITIVITY REDUTION: WITHIN -3dB AT 1.5V.
 9. GRADE THE UNITS BASE ON 1KHz SENSITIVITY AND PACKING:

GARDE	GARDE A	GARDE B	GARDE C
SENSITIVITY	-29~-31dB	-31~-33dB	-33~-35dB



Revision	C.O. #	Implementation Date	RELEASE LEVEL	REVISION
A	C40100791	11-24-11	Active	A

KNOWLES ACOUSTICS
 ITASCA, ILLINOIS U.S.A.

SCALE: 4:1	DR. BY DATE
DO NOT SCALE DRAWING	OO 11-24-11
TITLE: MICROPHONE ASSEMBLY HM-31308-P113 OUTLINE DRAWING	CK. BY DATE
	GJP 11-28-11
	APP. BY DATE
	GJP 11-28-11