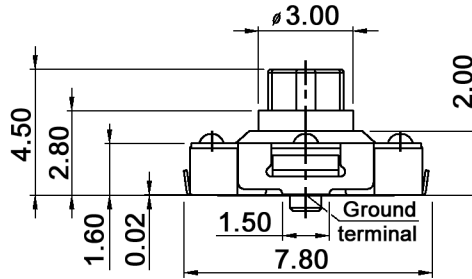
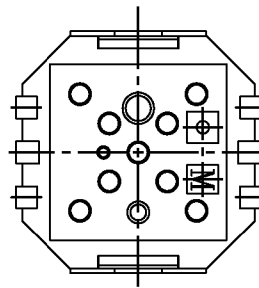
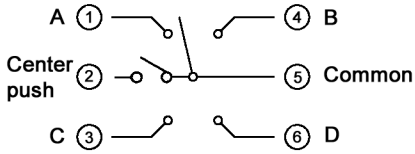
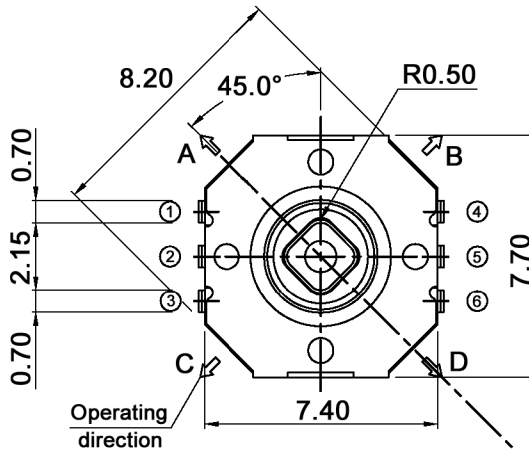
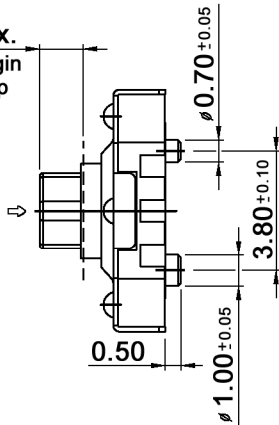


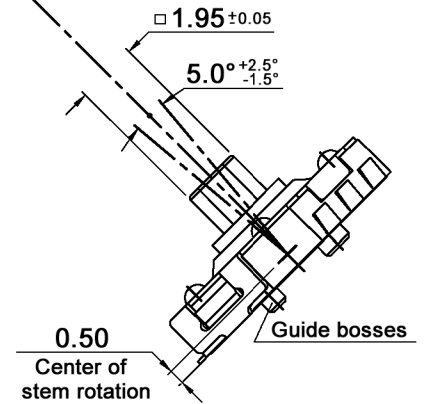
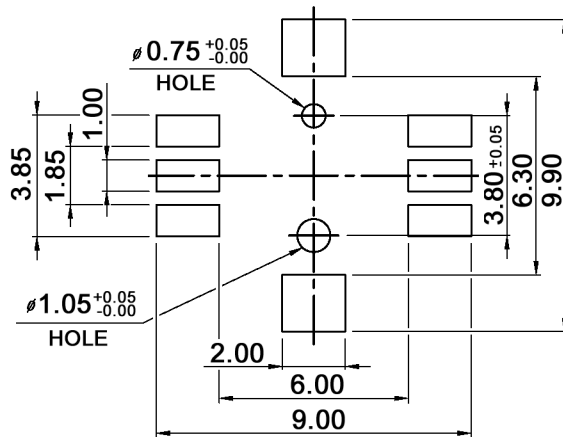
CIRCUIT DIAGRAM



1.40 max.
Fitting margin
for key top



P.C.B. LAYOUT



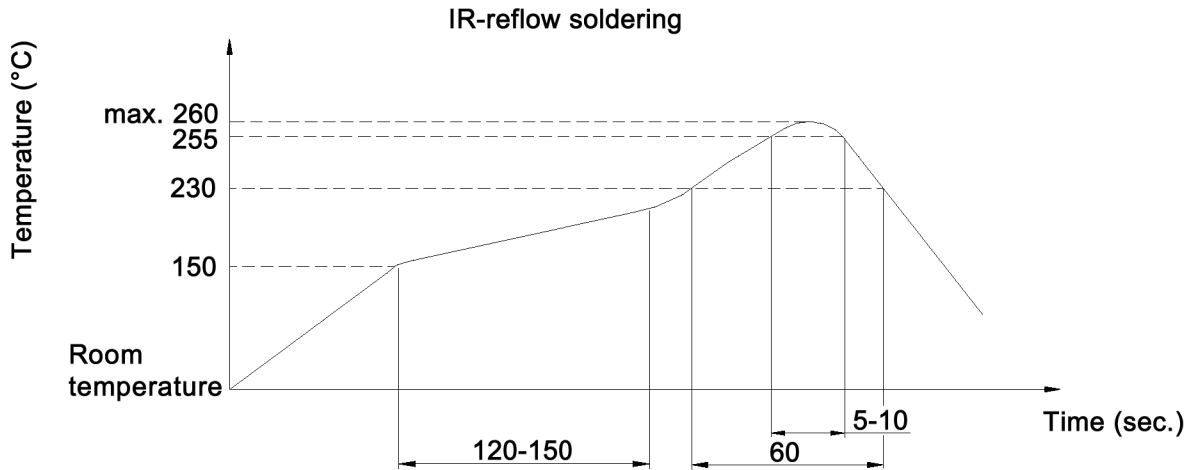
Compliance: RohS II (2011/65/EU)

Tolerances: max. ±0.2mm			Date	Name	<h1>TSSJ 5-J</h1>
			09/05	dr	
Cycles	06/17	dr			
Revised	05/16	dr			
Operating temperature	06/15	dr			
General tolerances	06/15	dr			
Revised	11/13	dr	knitter-switch		<h2>30 06 40</h2>
Soldering conditions	11/13	dr			
Modifications	Date	Name			Page 1/2

Specifications:

Contact rating: 50mA, 12V DC
 Contact resistance: 100mOhm max.
 Insulation resistance: 100MOhm min.
 Dielectric strength: 250V AC (50 or 60 Hz) for 1 minute
 Operating temperature: -40°C to +85°C
 Storage temperature: -40°C to +85°C
 Operating force: center push: 360 +/-60gf; 4 direction: 160 +/-50gf
 Mechanical life: 100 000 cycles min. (per direction)
 Stroke: (center push) 0.15 +/-0.10mm
 Material: Cover: nickel plated
 Stem: high-temp. thermoplastic LCP
 Contact: stainless
 Terminal: brass, silver plated
 Base: high-temp. thermoplastic LCP, molded black

Soldering conditions:



Compliance: RohS II (2011/65/EU)

Tolerances: max. ±0.2mm			Date	Name	TSSJ 5-J
			09/05	dr	
			knitter-switch		30 06 40
Modifications			Date	Name	Page 2/2