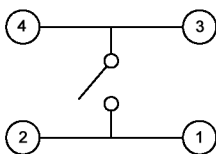
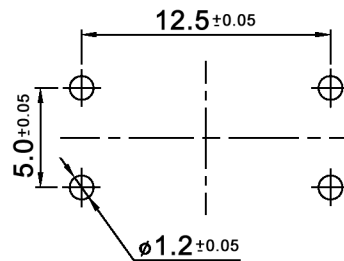


CIRCUIT DIAGRAM



P.C.B. LAYOUT



Tolerances: max. ±0.2mm		Date	Name	<h1>TSE 24 x</h1>
		05/10	dr	
Revised	02/13	dr	<h1>30 20 99</h1>	Page
IP rating	09/10	dr		1/2
Modifications	Date	Name	<h1>knitter-switch</h1>	

Specifications:

Contact rating: 50mA, 50V DC
Contact resistance: 100mOhm max.
Insulation resistance: 100MOhm min. at 100V DC for 1 minute +/-5sec.
Dielectric strength: 250V AC (50/60Hz) for 1 minute
Operating temperature: -40°C to +85°C
Storage temperature: -40°C to +85°C
Soldering conditions: max. 260°C, max. 5sec.
Travel: 0.40 +/-0.20mm
Material: Stem: high-temp. thermoplastic nylon UL94V-0
 Cover: stainless steel
 Seal: silicone rubber, molded black
 Contact: stainless steel, silver plated
 Terminal: brass, silver plated
 Base: high-temp. thermoplastic LCP, molded black
IP rating: IP 67

x	Operating force (gf)	Mechanical life	Color of stem
N	160 +/-50	1 000 000 cycles	brown
R	260 +/-50	1 000 000 cycles	red
W	320 +/-80	300 000 cycles	white
Y	520 +/-130	300 000 cycles	yellow



Tolerances: max. ±0.2mm		Date	Name	<h1>TSE 24 x</h1>
		05/10	dr	
		knitter-switch		<h1>30 20 99</h1>
				Page
				2/2
Modifications	Date	Name		