



Specifications:

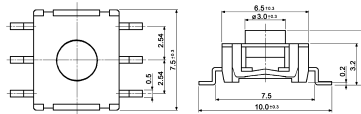
Contact rating:	TMS 1	48 V DC, 50 mA, max. 1 W
	TMS 3 / TMSE 3	24 V DC, 30 mA, max. 0.6 W
Contact resistance:		< 100 mΩ
Insulation resistance:		> 100 MΩ at 100 V DC
Dielectric strength:		250 V, 50 Hz for the duration of 1 minute
Operating temperature:		-25 °C to +70 °C
Mechanical life:		minimum 100 000 operations
Contacts:		silver-plated, terminals tin-plated; TMSE 3 with ground terminals
Material:	TMS 1	case: 6TPA resin; button: silicon, black; frame: stainless steel
	TMS 3	case: PA; button: PA, black; frame: stainless steel
	TMSE 3	case: PA washable; button: silicon, grey; frame: stainless steel
Operating force:	TMS 1 / TMSE 3	2.0 N
	TMS 3	1.2 N
Mounting:		on pc-board – SMD

Models:

Switching functions

TMS 1
travel 0.5

off – mom

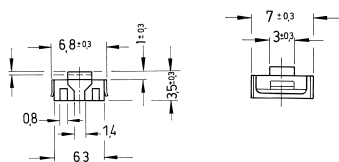


Circuit diagram:



TMS 3
travel 0.25

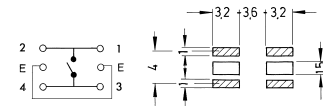
off – mom



TMSE 3
travel 0.5

off – mom

Circuit diagram:



Soldering conditions: TMS1 reflow-soldering – max.: 40 sec, 230° C
peak temperature: 250° C
TMS3/TMSE3 reflow-soldering – max.: 40 sec., 230° C
peak temperature: 255° C

Packing see previous page