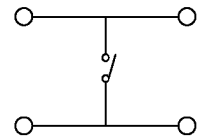
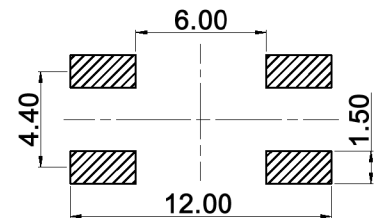


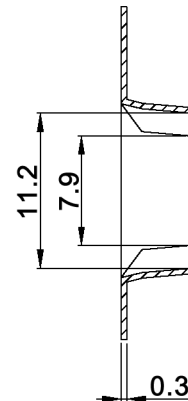
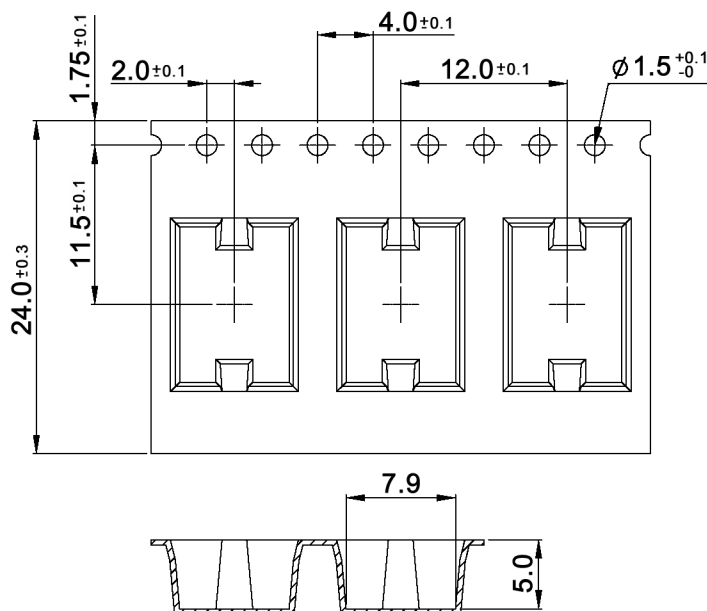
CIRCUIT DIAGRAM



P.C. MOUNTING



Packaging:



10 sprocket hole pitch cumulative tolerance +/-0.20  
 Carrier chamber is within 1mm in 250mm  
 Material: transparent polystyrene alloy  
 All dimensions meet EIA-481-C requirements  
 Component load per 330mm reel: 1100 pcs.



Tolerances: 0.1-1.0: ±0.05mm 1.0-5.0: ±0.1mm 5.0-10.0: ±0.2mm 10.0-20.0: ±0.3mm		Date	Name
		09/08	dr
Tolerances	01/13	dr	
Material	07/12	dr	
IP rating	04/12	dr	
Packaging	11/11	dr	
Base color	07/09	dr	
Operating temperature	06/09	dr	
Packaging	06/09	dr	
Operating force	05/09	dr	
Modifications	Date	Name	

TMPS 1(T)

knitter-switch

30 15 94

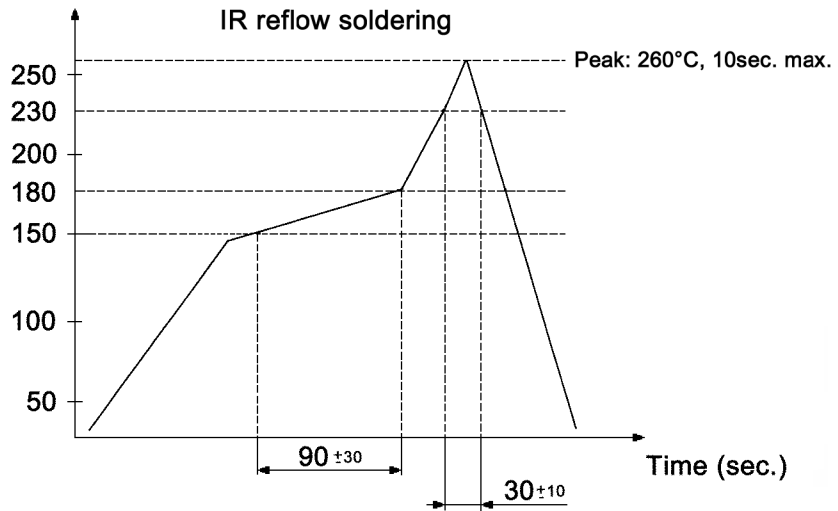
Page

1/2

**Specifications:**

**Contact rating:** 20mA, 24V DC; max. 0.5W  
**Contact resistance:** 100mOhm max.  
**Insulation resistance:** 1 000MOhm min. at 100V DC  
**Dielectric strength:** 250V, 50Hz for the duration of 1 minute  
**Operating temperature:** -40°C to +85°C  
**Mechanical life:** min. 1 000 000 cycles  
**Operating force:** 4.5 +/-1.0N  
**Travel:** 0.75 +/-0.25mm  
**Mounting:** on pc-board, SMT  
**IP rating:** IP67  
**Material:** Base: thermoplastic UL94V-0, black  
 Button: silicone, ivory  
 Contact disc: stainless steel, 0.025µm gold plated over nickel barrier  
 Terminal contact: brass, 0.025µm gold plated  
 Terminal: brass, tin plated

**Soldering conditions:**



Tolerances: 0.1-1.0: ±0.05mm 1.0-5.0: ±0.1mm 5.0-10.0: ±0.2mm 10.0-20.0: ±0.3mm			Date	Name	<b>TMPS 1(T)</b>
			09/08	dr	
			<b>knitter-switch</b>		<b>30 15 94</b>
					Page
					2/2
Modifications	Date	Name			