

**AMPHENOL PART NUMBER CONFIGURATION:**

U65 - X XX - X X 6 XXX

INFINITY  
RECEPTACLE

STYLE

- B = R/A SMT, 2 LOCATION  
AND 4 SOLDERING POSTS
- D = R/A SMT, 2 LOCATION  
AND 2 7.0 mm DEEP SCREW MOUNT HOLES  
AND 2 THRU SCREW MOUNT HOLES
- E = R/A SMT, 2 LOCATION  
AND 2 1.5 mm DEEP SCREW MOUNT HOLES  
AND 2 THRU SCREW MOUNT HOLES

CONNECTOR TYPE

- 04 = 4X
- 12 = 12X

PLATING

- 1 = 50µ" GOLD
- 2 = 30µ" GOLD
- 3 = GOLD FLASH OVER  
PALLADIUM-NICKEL (LEAD FREE)
- 4 = 50µ" GOLD (RoHS COMPLIANT)
- 5 = 30µ" GOLD (RoHS COMPLIANT)
- B = 50µ" GOLD (RoHS COMPLIANT)
- C = 30µ" GOLD (RoHS COMPLIANT)

OPTION

- 0= 2 PIECE LOCKING PLATE (SHIPPED LOOSE)
- 1= ONE PIECE LOCKING PLATE (SHIPPED LOOSE)
- 2= NO LOCKING PLATE
- 3= NO LOCKING PLATE AND NO GASKET
- 4= NO LOCKING PLATE WITH SPECIAL EMI GASKET  
(LANYARD ONLY)

**1. MATERIAL:**

PLASTIC HOUSING:  
HIGH TEMPERATURE RESISTANT NYLON, FLAMMABILITY RATING UL94V-0.

CONTACTS:

- PHOSPHOR BRONZE
- PLATING OPTION 1 OR 2 (50µ" OR 30µ" GOLD): 50µ" [1.27 µm] OR 30µ" [0.76 µm] MIN. GOLD OVER 50µ" [1.27 µm] MIN. NICKEL ON CONTACT MATING SURFACES. 150µ" [3.81 µm] MIN. TIN-LEAD (90/10) OVER 50µ" [1.27 µm] NICKEL ON CONTACT TAILS.
- PLATING OPTION 3 (GOLD FLASH OVER PALLADIUM-NICKEL): 2µ" [0.05 µm] MIN. GOLD OVER 25µ" [0.635 µm] MIN. PALLADIUM-NICKEL ON CONTACT MATING SURFACES. 0.3µ" [0.007 µm] MIN. GOLD OVER 1.2µ" [0.03 µm] MIN. PALLADIUM-NICKEL ON CONTACT TAILS. 50µ" [1.27 µm] MIN. NICKEL UNDER PLATING.
- PLATING OPTION 4 OR 5 (RoHS) (50µ" OR 30µ" GOLD): 50µ" [1.27 µm] OR 30µ" [0.76 µm] MIN. GOLD OVER 50µ" [1.27 µm] MIN. NICKEL ON CONTACT MATING SURFACES. 2µ" [0.05 µm] MIN. GOLD OVER 50µ" [1.27 µm] MIN. NICKEL ON CONTACT TAILS.
- PLATING OPTION B OR C (RoHS) (50µ" OR 30µ" GOLD): 50µ" [1.27 µm] OR 30µ" [0.76 µm] MIN. GOLD OVER 50µ" [1.27 µm] MIN. NICKEL ON CONTACT MATING SURFACES. 100-150µ" [2.54-3.81 µm] MATTE TIN OVER 50µ" [1.27 µm] MIN. NICKEL ON CONTACT TAILS.

METAL SHELL: DIE CASTING ALLOY

PLATING: 100µ" [2.54 µm] MIN. NICKEL OVER COPPER UNDER LAYER

GASKET: STAINLESS STEEL

LOCKING PLATE: STAINLESS STEEL

M2 SCREWS: STEEL WITH ZINC PLATING

2. TEMPERATURE RANGE: -40°C TO +85°C

REVISIONS				
SYM	ZONE	ECN, ERN NO.	DATE	APPRD.
G		MODIFIED THREAD NOTE ON P3	JUL 27 '10	A.G
H		"D" CONFIGURATION ADDED ON P1	JAN 12 '11	A.G

THIS IS A CAD DRAWING. DO NOT MANUALLY REVISE.

PACKAGING/SPECIAL

- (NOTE: ALL "M" OPTIONS ARE FOR STYLE E WITH .062" TO .093" THICK PCB'S ONLY)
- NO DIGIT = TRAY PACKAGING NO REAR COVER
- C = TRAY PACKAGING WITH REAR COVER (SHIPPED LOOSE)
- M = TRAY PACKAGING, NO REAR COVER, M2 SCREWS INCLUDED (SHIPPED LOOSE)
- CM = TRAY PACKAGING, W/ REAR COVER, M2 SCREWS INCLUDED (BOTH SHIPPED LOOSE)
- T = TAPE & REEL PACKAGING NO REAR COVER
- CT = TAPE & REEL PAKAGING W/ REAR COVER (SHIPPED LOOSE)
- MT = TAPE & REEL PAKAGING, NO REAR COVER, M2 SCREWS INCLUDED (SHIPPED LOOSE)
- CMT = TAPE & REEL PAKAGING, W/ REAR COVER, M2 SCREWS INCLUDED (BOTH SHIPPED LOOSE)

KEYING OPTION

- 0 = NO KEYING (STD)
- 1 = KEYING 1 & 6
- 2 = KEYING 2 & 6
- 3 = KEYING 3 & 5
- 4 = KEYING 4 & 5

MOUNTING STYLE

- LANYARD LATCH, (4) SOLDER POSTS OR (4) MOUNTING HOLES

DRAWN	M.LONG	DATE	2005/05/17
DESIGNED			
CHECKED	J.SI	DATE	2005/05/17
I. E. APPRD.			
Q. A. APPRD.			
DWG. APPRD.			
ENG. REL. NO.			
REF.			
DIMENSIONS ARE IN	CODE ID. NO.		
INCHES [mm]	03554		

**Amphenol Canada Corp.**

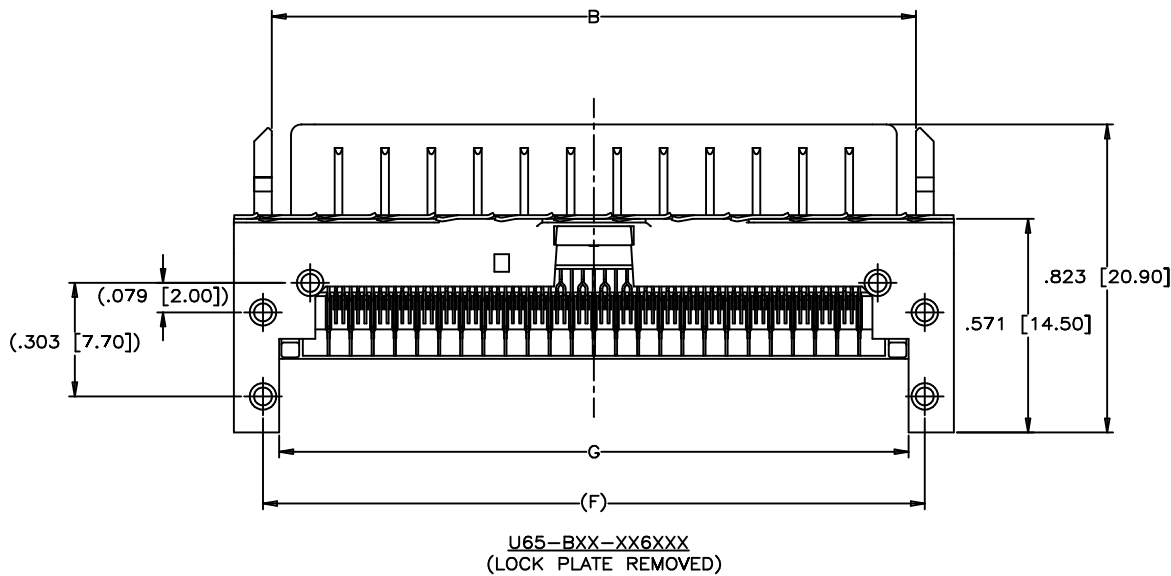
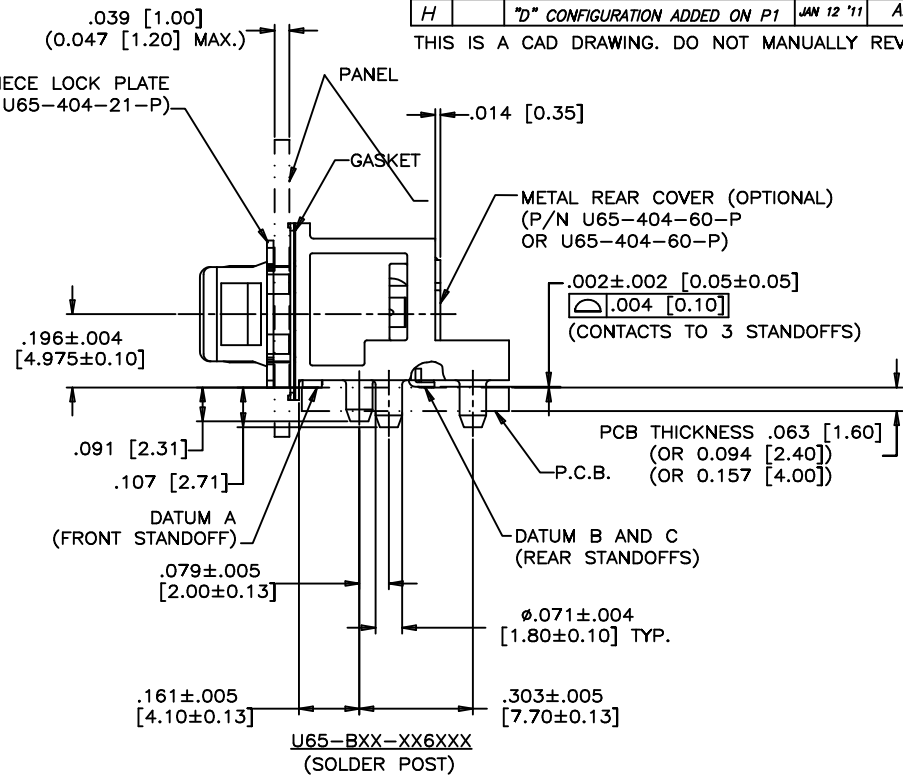
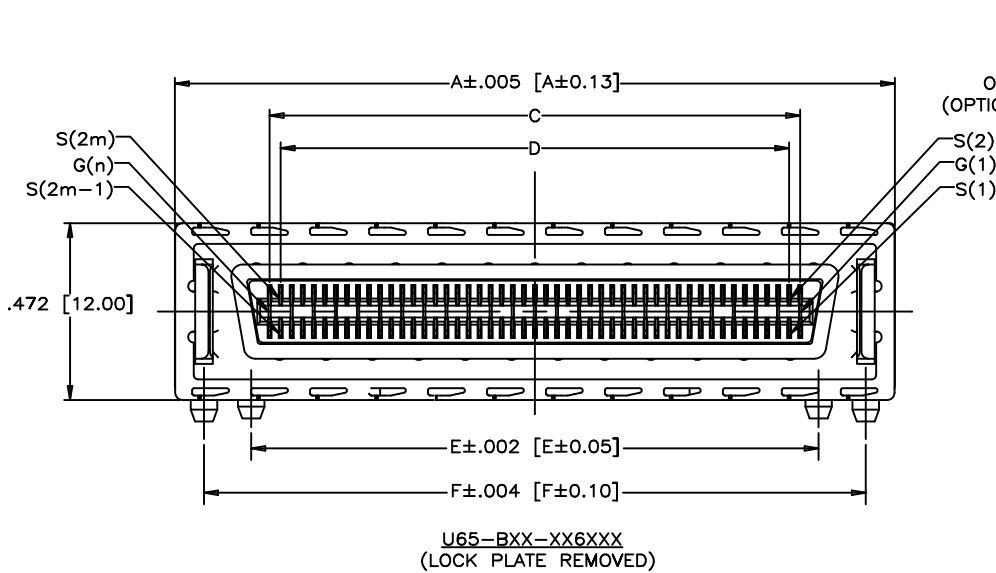
TITLE  
INFINITY 4X/12X RECEPTACLE, LANYARD  
STYLE, FIXED BOARD, RIGHT ANGLE SMT,  
(4) SOLDER POSTS OR (4) MOUNTING HOLES

DWG	DRAWING NO.	REV.
A	P-U65-XXX-XX6XXX	H
SCALE	2/1	WT. -----
SURF.	-----	SHEET 1 OF 4

THIS DOCUMENT CONTAINS PROPRIETARY INFORMATION AND SUCH INFORMATION MAY NOT BE DISCLOSED TO OTHERS FOR ANY PURPOSE OR USED FOR MANUFACTURING PURPOSES WITHOUT WRITTEN PERMISSION FROM AMPHENOL CANADA CORP.

REVISIONS				
SYM	ZONE	ECN, ERN NO.	DATE	APPRD.
G		MODIFIED THREAD NOTE ON P3	JUL 27 '10	A.G
H		"D" CONFIGURATION ADDED ON P1	JAN 12 '11	A.G

THIS IS A CAD DRAWING. DO NOT MANUALLY REVISE.



**DIMENSION TABLE:**

PART NUMBER	U65-X04-XX6XXX	U65-X12-XX6XXX
A	.978 [24.85]	1.923 [48.85]
B	.776 [19.70]	1.720 [43.70]
C	.472 [12.00]	1.417 [36.00]
D	.413 [10.50]	1.358 [34.50]
E	.571 [14.50]	1.516 [38.50]
F	.823 [20.90]	1.768 [44.90]
G	.736 [18.70]	1.681 [42.70]
H	.894 [22.70]	1.839 [46.70]
K	.776 [19.70]	1.720 [43.70]
m	m = 1 - 8	m = 1 - 24
n	n = 1 - 9	n = 1 - 25
P	.207 [5.25]	.679 [17.25]
R	.089 [2.25]	.561 [14.25]
S	.148 [3.75]	.620 [15.75]

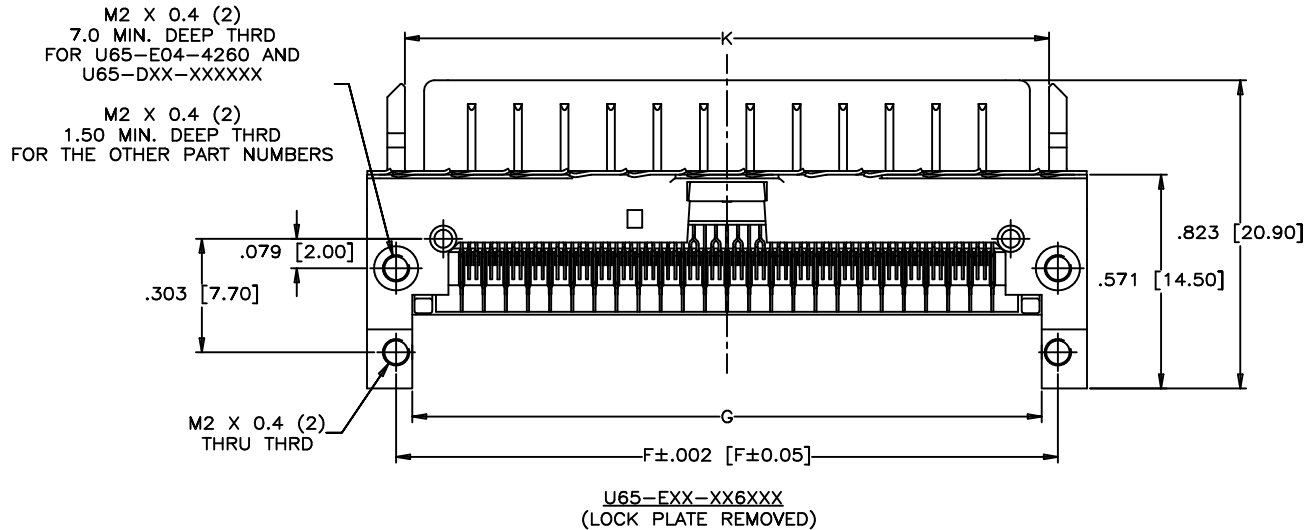
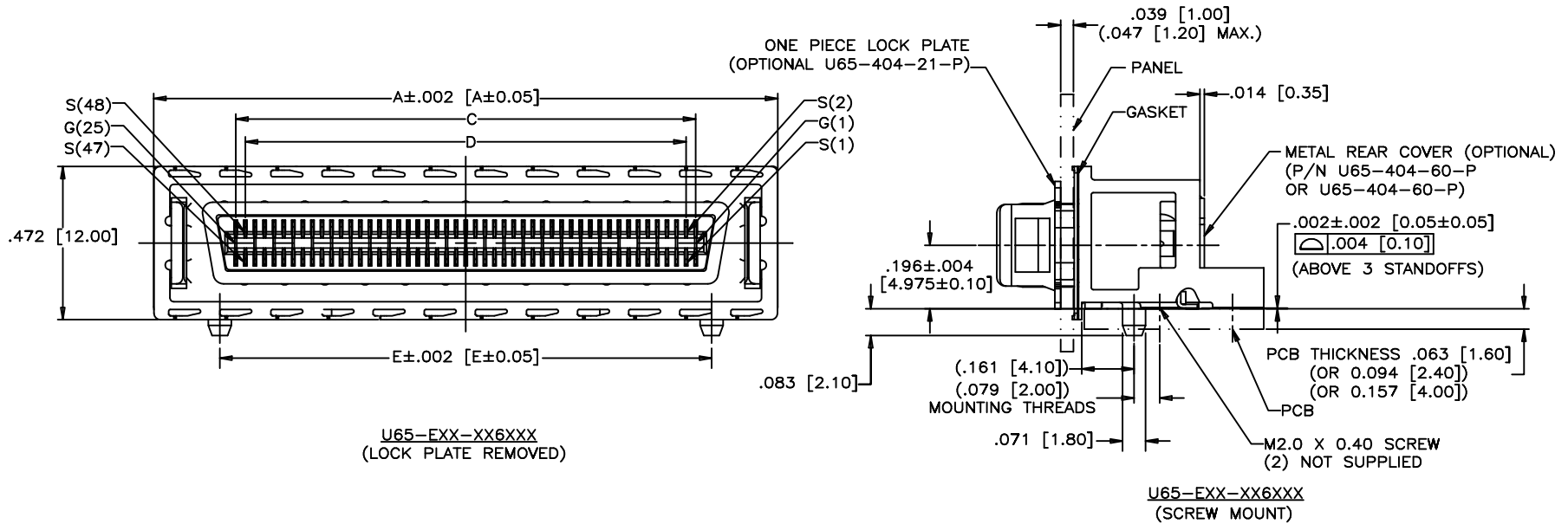
\*\* REFER TO [mm] AS PRIMARY DIMENSIONS.

THIS DOCUMENT CONTAINS PROPRIETARY INFORMATION AND SUCH INFORMATION MAY NOT BE DISCLOSED TO OTHERS FOR ANY PURPOSE OR USED FOR MANUFACTURING PURPOSES WITHOUT WRITTEN PERMISSION FROM AMPHENOL CANADA CORP.

DRAWN	M.LONG	DATE	2005/05/17	<b>Amphenol Canada Corp.</b>		
DESIGNED						
CHECKED	J.SI	DATE	2005/05/17			
I. E. APPRD.						
Q. A. APPRD.				TITLE		
DWG. APPRD.				INFINITY 4X/12X RECEPTACLE, LANYARD STYLE, FIXED BOARD, RIGHT ANGLE SMT, (4) SOLDER POSTS OR (4) MOUNTING HOLES		
ENG. REL. NO.		DWG	DRAWING NO.	P-U65-XXX-XX6XXX		
REF.		A				
DIMENSIONS ARE IN	CODE ID. NO.	SCALE	2/1	WT. -----	SURF. -----	SHEET 2 OF 4
INCHES [mm]	03554					

REVISIONS				
SYM	ZONE	ECN, ERN NO.	DATE	APPRD.
G		MODIFIED THREAD NOTE ON P3	JUL 27 '10	A.G
H		"D" CONFIGURATION ADDED ON P1	JAN 12 '11	A.G

THIS IS A CAD DRAWING. DO NOT MANUALLY REVISE.

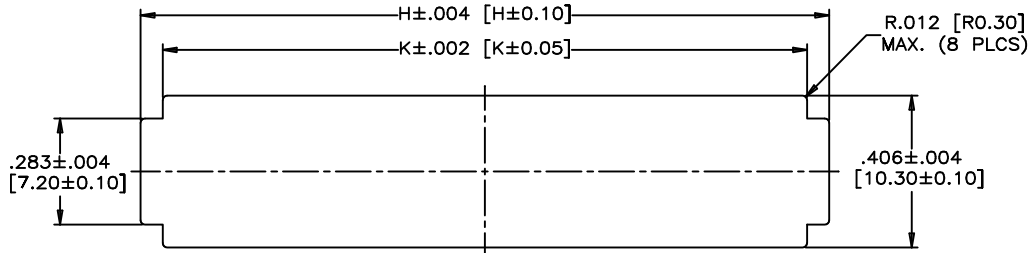


DRAWN	M.LONG	DATE	2005/05/17	Amphenol Canada Corp.
DESIGNED				
CHECKED	J.SI	2005/05/17		
I. E. APPRD.				
Q. A. APPRD.				TITLE
DWG. APPRD.				INFINITY 4X/12X RECEPTACLE, LANYARD STYLE, FIXED BOARD, RIGHT ANGLE SMT, (4) SOLDER POSTS OR (4) MOUNTING HOLES
ENG. REL. NO.				DWG. NO.
REF.				A
DIMENSIONS ARE IN	CODE ID. NO.			DRAWING NO.
INCHES [mm]	03554			P-U65-XXX-XX6XXX
		SCALE	2/1	WT. -----
				SURF. -----
				SHEET 3 OF 4

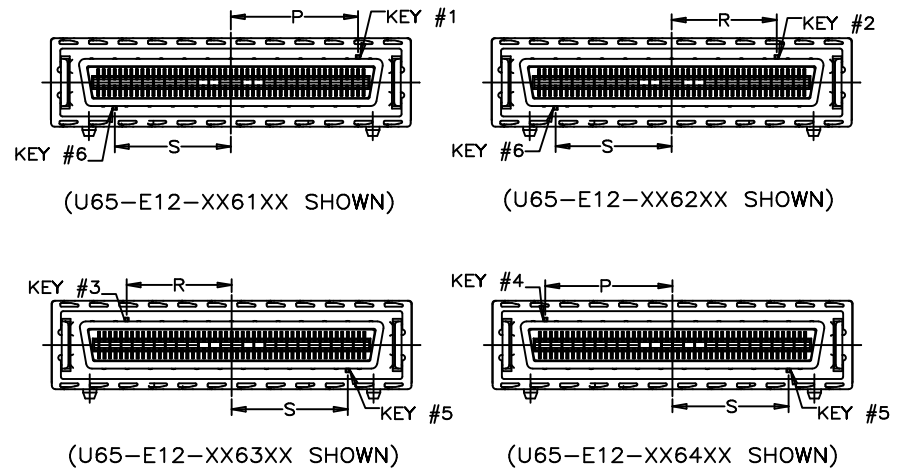
THIS DOCUMENT CONTAINS PROPRIETARY INFORMATION AND SUCH INFORMATION MAY NOT BE DISCLOSED TO OTHERS FOR ANY PURPOSE OR USED FOR MANUFACTURING PURPOSES WITHOUT WRITTEN PERMISSION FROM AMPHENOL CANADA CORP.

REVISIONS				
SYM	ZONE	ECN, ERN NO.	DATE	APPRD.
G		MODIFIED THREAD NOTE ON P3	JUL 27 '10	A.G
H		"D" CONFIGURATION ADDED ON P1	JAN 12 '11	A.G

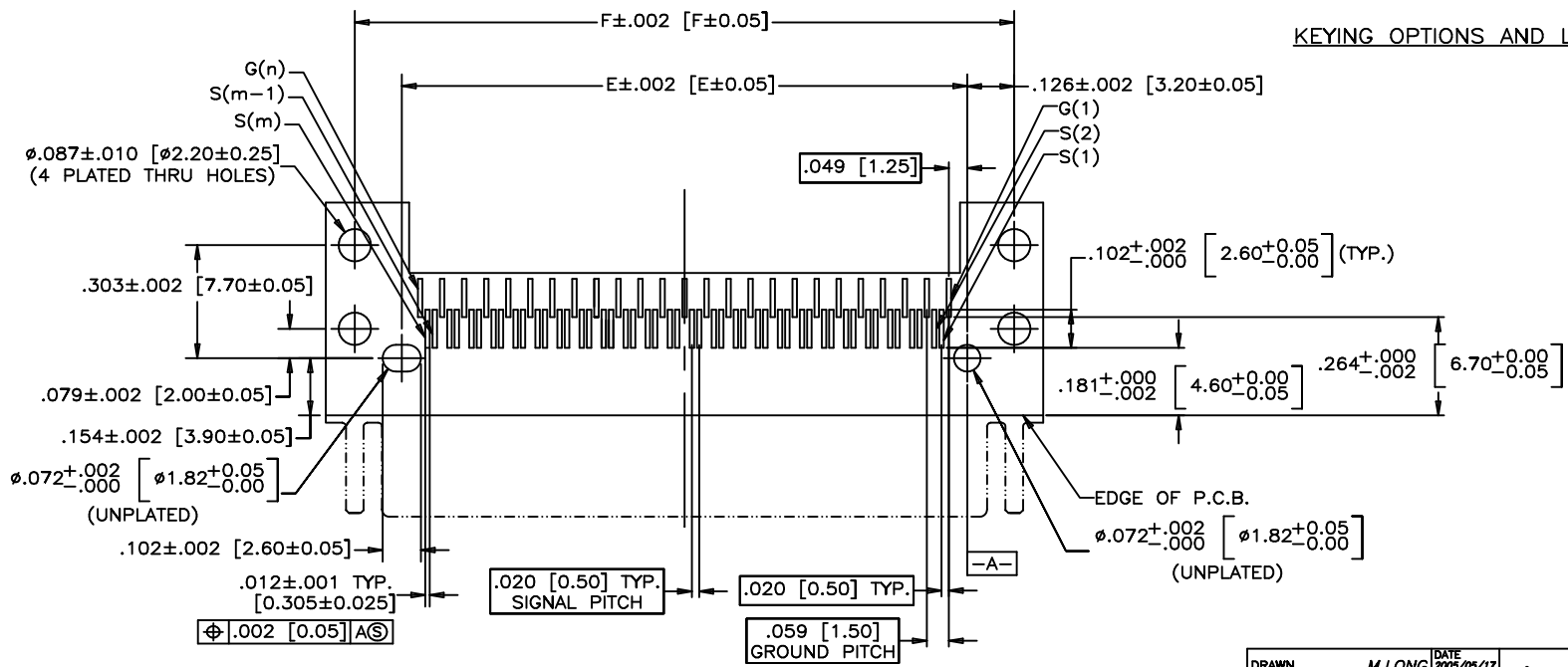
THIS IS A CAD DRAWING. DO NOT MANUALLY REVISE.



RECOMMENDED PANEL CUTOUT



KEYING OPTIONS AND LOCATIONS



RECOMMENDED P.C.B. LAYOUT  
(COMPONENTS SIDE OF BOARD)

DRAWN	M.LONG	DATE	2005/05/17
DESIGNED			
CHECKED	J.SI	DATE	2005/05/17
I. E. APPRD.			
Q. A. APPRD.			
DWG. APPRD.			
ENG. REL. NO.			
REF.			
DIMENSIONS ARE IN	CODE ID. NO.		
INCHES [mm]	03554		

Amphenol Canada Corp.			
TITLE			
INFINITY 4X/12X RECEPTACLE, LANYARD			
STYLE, FIXED BOARD, RIGHT ANGLE SMT,			
(4) SOLDER POSTS OR (4) MOUNTING HOLES			
DWG	DRAWING NO.	REV.	
A	P-U65-XXX-XX6XXX	H	
SCALE	2/1	WT.	-----
SURF.	-----	SHEET	4 OF 4

THIS DOCUMENT CONTAINS PROPRIETARY INFORMATION AND SUCH INFORMATION MAY NOT BE DISCLOSED TO OTHERS FOR ANY PURPOSE OR USED FOR MANUFACTURING PURPOSES WITHOUT WRITTEN PERMISSION FROM AMPHENOL CANADA CORP.

# Mouser Electronics

Authorized Distributor

Click to View Pricing, Inventory, Delivery & Lifecycle Information:

[Amphenol:](#)

[U65-B04-4060CT](#) [U65-E04-4260T](#) [U65-F04-4360T](#) [U65-E12-4264T](#) [U65-E12-4260T](#) [U65B044060](#) [U65-B04-4260T](#)