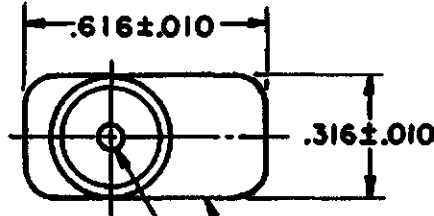
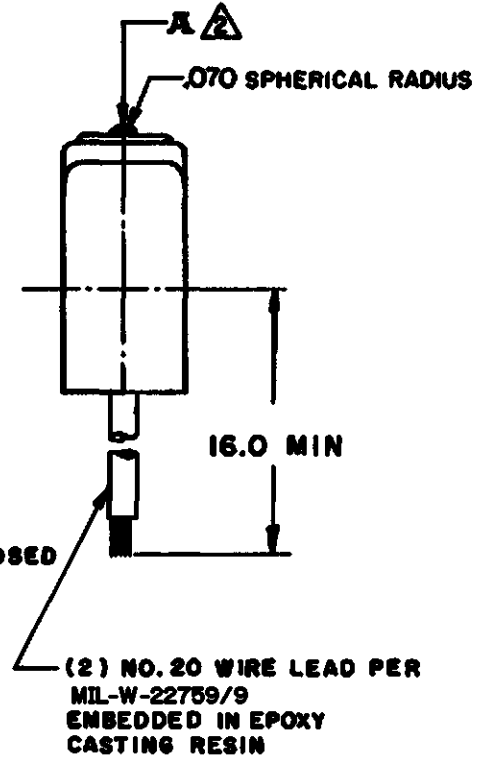
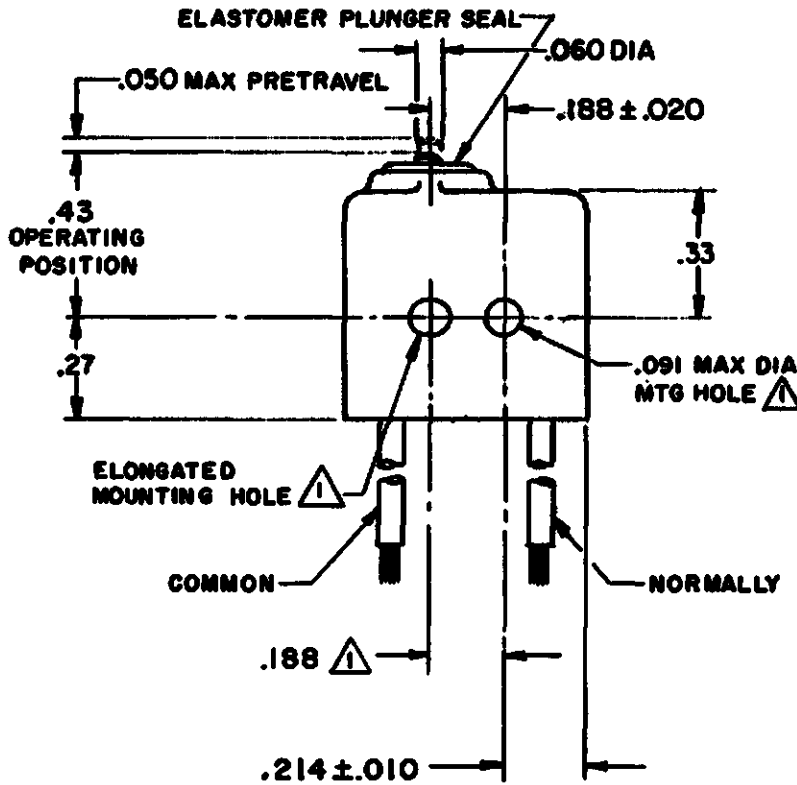


CATALOG LISTING  
PAGE 1 OF 1  
ISSUE 8  
RELEASE NO. SR-9739  
CHECK 20APR10  
CMH  
CHECK 5 MAR 99  
J A F  
CHECK 5 MAR 99  
J J A  
DRAWN  
RASTER



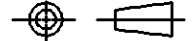
CORROSION RESISTANT TREATED METAL ENCLOSURE  
CORROSION RESISTANT STEEL PLUNGER



- NOTES**
- 1 MOUNTING HOLES WILL ACCEPT .087 MAX DIA PINS OR SCREWS ON .188 ± .002 CENTERS
  - 2 ACTUATING IN LINE WITH ARROW "A" IS RECOMMENDED
  - 3 WEIGHT OF SWITCH ONLY IS .16 OZ MAX. WEIGHT OF SWITCH WITH WIRE LEADS IS .48 OZ MAX

THIS DRAWING COVERS A PROPRIETARY ITEM AND IS THE PROPERTY OF MICRO SWITCH, A DIVISION OF HONEYWELL. THIS DRAWING IS NOT TO BE COPIED OR USED WITHOUT THE APPROVAL OF MICRO SWITCH.

THIRD ANGLE PROJECTION



CHARACTERISTICS	
OPERATING FORCE	-----10 OZ MAX
RELEASE FORCE	----- 2 OZ MIN
RELEASE TRAVEL	----- .004 MIN
DIFFERENTIAL TRAVEL	----- .005 MAX
OVERTRAVEL	----- .004 MIN

ELECTRICAL DATA
CONTACT ARRANGEMENT
<b>S P N C</b>

SCALE	DO NOT SCALE PRINT
<b>2:1</b>	
<b>UNLESS OTHERWISE SPECIFIED TOLERANCES ARE</b>	
ONE PLACE (.0)	±.030
TWO PLACE (.00)	±.015
THREE PLACE (.000)	±.005
ANGLES	±
WEIGHT	<b>3</b>