

MICRO SWITCH

A DIVISION OF MINNEAPOLIS-HONEYWELL REGULATOR COMPANY
PRESPORT, ILLINOIS

FED. MFR. CODE 91929

SWITCH-BASIC

CATALOG LISTING

ISE3-3

ISE3-3

PAGE 1 OF 1

M

DRAWING NUMBER

ISSUE 78

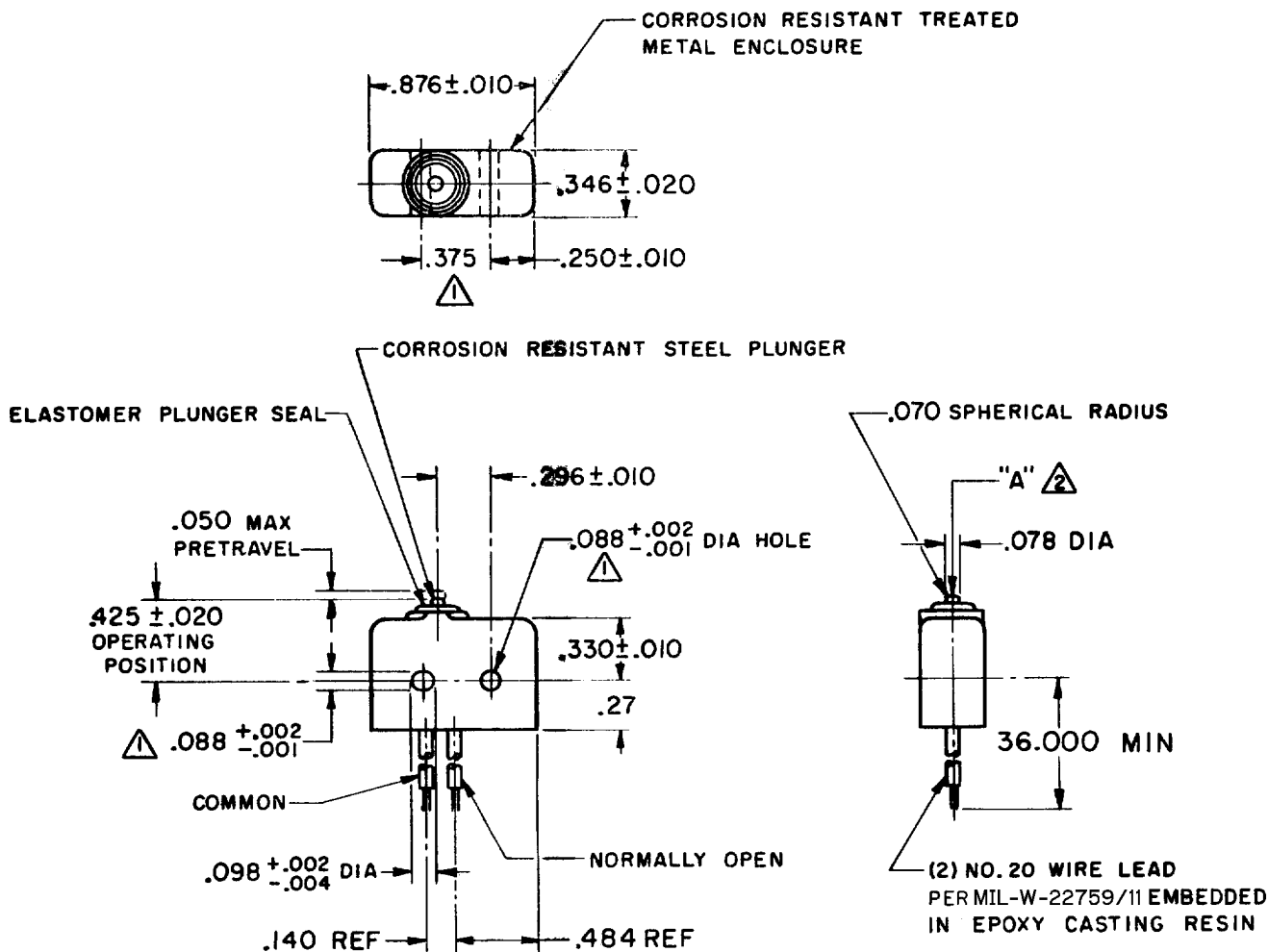
REVISIONS

A	CO16449	R G C	2 MARCH 82
B	CO-34213	J A L	24 SEPT 74
C	CO 51463-D	WJM	16 JUL 82
D	CO57041A	C JH	21 MAR 85
E	CO94274	DLM	MAR 99

FORMTEK

FO-50378

RELEASE NO. CHECK DRAW 7 MAR 82 CHECK DRAW 2 MAR 1962



NOTE -

- Δ MOUNTING HOLES WILL ACCEPT $.087$ MAX DIA PINS OR SCREWS ON $.375 \pm .002$ CENTERS
- Δ ACTUATION IN LINE WITH ARROW "A" IS RECOMMENDED
- Δ WEIGHT OF SWITCH ONLY IS $.26$ OZ MAX. WEIGHT OF SWITCH WITH WIRE LEADS IS 1.00 OZ MAX

THIS DRAWING COVERS A PROPRIETARY ITEM AND IS THE PROPERTY OF MICRO SWITCH, A DIVISION OF MINNEAPOLIS-HONEYWELL REGULATOR CO. THIS DRAWING IS NOT TO BE COPIED OR USED WITHOUT THE APPROVAL OF MICRO SWITCH.

CHARACTERISTICS	ELECTRICAL DATA	SCALE FULL
OPERATING FORCE — — — — — 5-17 OZ	CONTACT ARRANGEMENT S P N O	DO NOT SCALE PRINT
RELEASE FORCE — — — — — 4 OZ MIN	250 VAC — — — — — 5 AMP	UNLESS OTHERWISE SPECIFIED DIMENSIONS ARE IN INCHES TOLERANCES ARE:
RELEASE TRAVEL — — — — — .004 MIN	30 VOLTS DC RATING	
DIFFERENTIAL TRAVEL — — — — — .004 MAX	INDUCTIVE — — — — — SEA LEVEL — — — — — 3 AMP	ONE PLACE (.0) $\pm .030$
OVERTRAVEL — — — — — .003 MIN	50,000 FT — — — — — 2.5 AMP	TWO PLACE (.00) $\pm .018$
	RESISTIVE — — — — — SEA LEVEL — — — — — 5 AMP	THREE PLACE (.000) $\pm .008$
	50,000 FT — — — — — 5 AMP	ANGLES \pm
	MAXIMUM INRUSH — — — — — 24 AMP	WEIGHT Δ