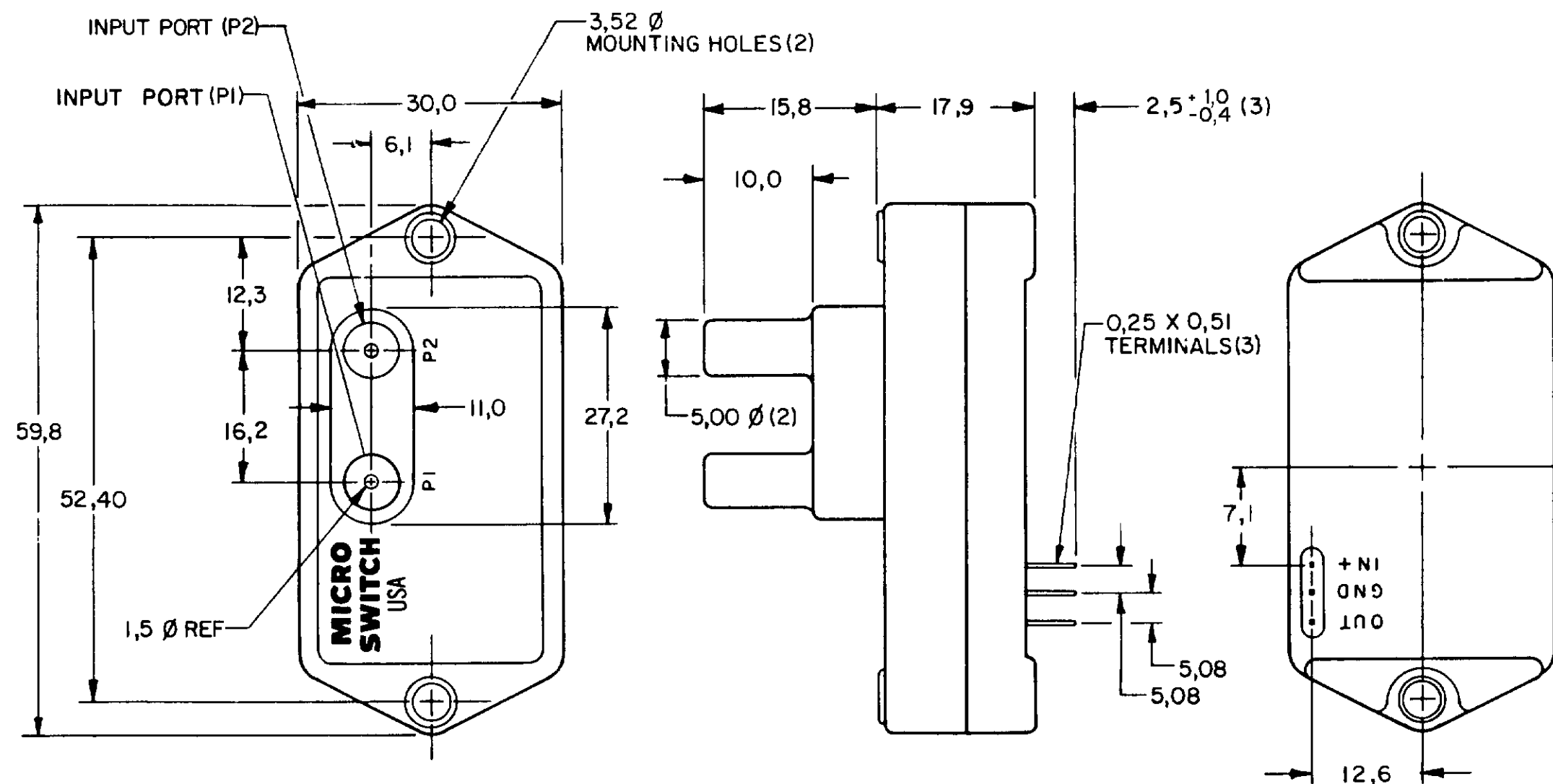


METRIC	INCH
0,4	.016
0,25	.010
0,51	.020
1,0	.039
1,5	.04
2,5	.099
3,52	.139
5,00	.197
5,08	.200
6,1	.240
7,1	.280
10,0	.39
11,0	.43
12,3	.484
12,6	.496
15,8	.51
16,2	.64
17,9	.70
27,2	1.07
30,0	1.18
52,40	2.06
59,8	2.35



TYPE "D" (DIFFERENTIAL)

GENERAL OPERATING CHARACTERISTICS	
PRESSURE RANGE	-20 TO 120 CM H ₂ O (-.28 TO 1.70 PSI)
OVERPRESSURE	350 CM H ₂ O (5 PSI)
TEMPERATURE RANGE	+15° TO 45°C
SUPPLY VOLTAGE	5 VDC
SUPPLY CURRENT	10 mA MAX WITH 10K LOAD
SHORT CIRCUIT LIMIT	MAY BE SHORTED INDEFINITELY
OUTPUT RIPPLE	NONE
GROUND REFERENCE	SUPPLY AND OUTPUT ARE COMMON

ELECTRICAL PERFORMANCE AT 25°C AND 5.00 ± 0.01 VDC SUPPLY	
OUTPUT VOLTAGE (P2 > P1)	
NULL (0 CM H ₂ O)	0.820 ± 0.080 VDC
FULL SCALE (@ 47" H ₂ O)	2.952 ± 0.080 VDC
NEG. FULL SCALE (-20 CM H ₂ O)	0.463 VDC TYPICAL
SENSITIVITY (P2 > P1)	0.018 VDC/CM H ₂ O
LINEARITY (% F.S.O.) ⁵ (BFSL)	± 1.5 (P2 > P1) MAX
HYSTERESIS & REPEATABILITY (% F.S.O.) ⁵	± 0.15 TYPICAL
TEMPERATURE ERROR (% F.S.O.) ⁵	
ZERO SHIFT	± 0.75
SPAN SHIFT	± 1.00
RESPONSE TIME	1 mSEC MAX

- NOTES
- INPUT MEDIA:
P1 - DRY GASES ONLY: CONNECTION SIDE OF SENSOR
P2 - LIMITED ONLY TO THOSE MEDIA THAT WILL NOT ATTACK POLYESTER, SILICON, OR SILICONE BASED ADHESIVE
 - TERMINALS ARE PLATED FOR SOLDERING
 - LIMIT SOLDERING TO 315°C MAX FOR 10 SECONDS MAX
 - UNITS ARE OF PLASTIC CONSTRUCTION
 - F.S.O. IS THE ALGEBRAIC DIFFERENCE BETWEEN THE OUTPUT AT NULL AND THE OUTPUT AT FULL PRESSURE

DRAWING NUMBER: 163PCOID61
 PAGE 1 OF 1
 ISSUE: 2
 RELEASE NO. PR-15345
 REPLACES X-86344-PC
 REVISIONS:
 A 95394
 DLM 9 FEB 00
 TAD 3 FEB 87
 CHECKED: [Signature]
 DATE: 9 FEB 87
 FORMTEK

THIS DRAWING COVERS A PROPRIETARY ITEM AND IS THE PROPERTY OF MICRO SWITCH, A DIVISION OF HONEYWELL. THIS DRAWING IS NOT TO BE COPIED OR USED WITHOUT THE APPROVAL OF MICRO SWITCH.

MICRO SWITCH
a Honeywell Division

FED. MFG. CODE 81828

LOW PRESSURE
TRANSDUCER

CATALOG LISTING
163PCOID61

THIRD ANGLE PROJECTION		
SCALE NONE		
DO NOT SCALE PRINT		
UNLESS OTHERWISE SPECIFIED TOLERANCES ARE		
NO PLACE (0)	± 1 mm	
ONE PLACE (0.0)	± 0.4 mm	
TWO PLACE (0.00)	± 0.15 mm	
ANGLES	±	
WEIGHT		