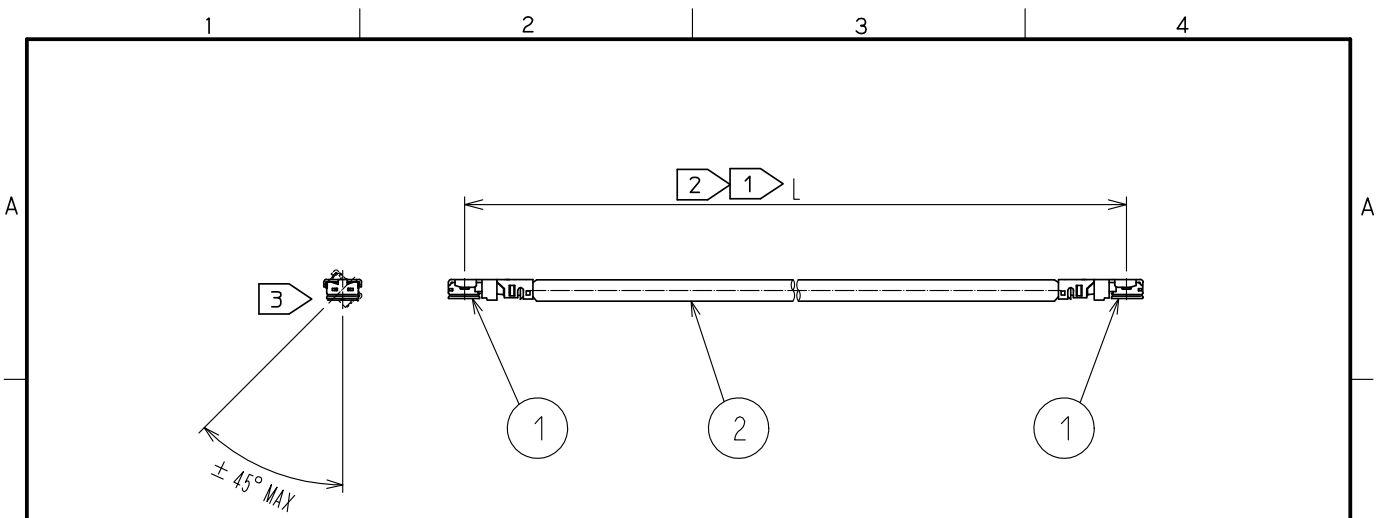


May.1.2020 Copyright 2020 HIROSE ELECTRIC CO., LTD. All Rights Reserved.
 In case of consideration for using Automotive equipment / device which demand high reliability, kindly contact our sales window correspondents.



Part No.	Cable color
~068*1~	GRAY
~068*2~	BLACK
~068*3~	WHITE

HRS DRAWING TOP REFERENCE

NOTE ① We indicate the length of the harness on the last of product name. 'L' part.

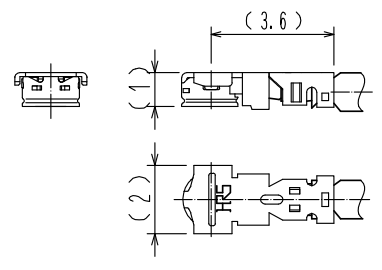
② Tolerance for [L]

Length L [mm]	Tolerance [mm]
$100 \leq L \leq 200$	± 4
$200 < L \leq 500$	± 8
$500 < L \leq 1000$	± 12
$1000 < L$	$\pm 1.5\%$

③ Connector rotation angle is within ± 45 degree from the above image.
 For long length in the case of $L > 500$, the angle is optional.

4. Specifications are subject to change without notice.

【 DIMENSIONS OF CONNECTOR 】



1	X.FL-LP(P)-068	CL331-0714-0	2	1.13 Dia. coaxial cable
NO.	PART NO.	CODE NO.	NO.	PART NO.

HALOGEN FREE

UNITS mm		SCALE FREE	COUNT 2	DESCRIPTION OF REVISIONS DIS-D-00003339	DESIGNED MS. MATSUMOTO	CHECKED MT. KANEKO	DATE 18. 07. 12
-------------	--	---------------	------------	--	---------------------------	-----------------------	--------------------

HIROSE ELECTRIC CO., LTD.	APPROVED :NK. NINOMIYA	16. 07. 23	DRAWING NO.	X. FL-2LPP-068**TS-A-L ①
	CHECKED :MT. KANEKO	16. 07. 23	PART NO.	
	DESIGNED :MS. MATSUMOTO	16. 07. 23	CODE NO.	
	DRAWN :MS. MATSUMOTO	16. 07. 23	NO.	