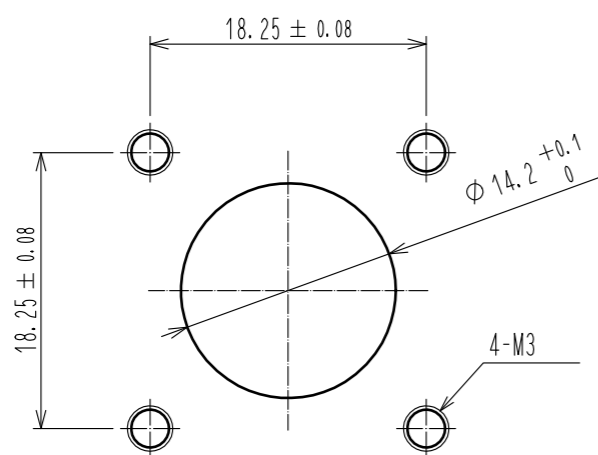
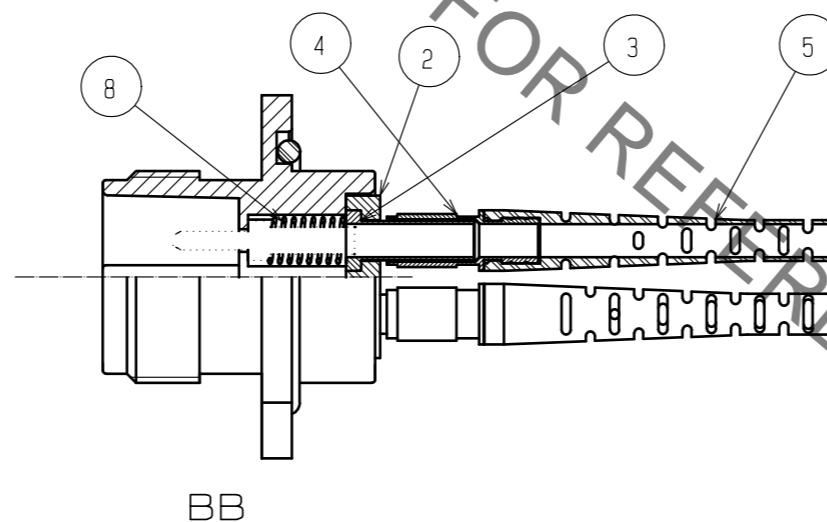
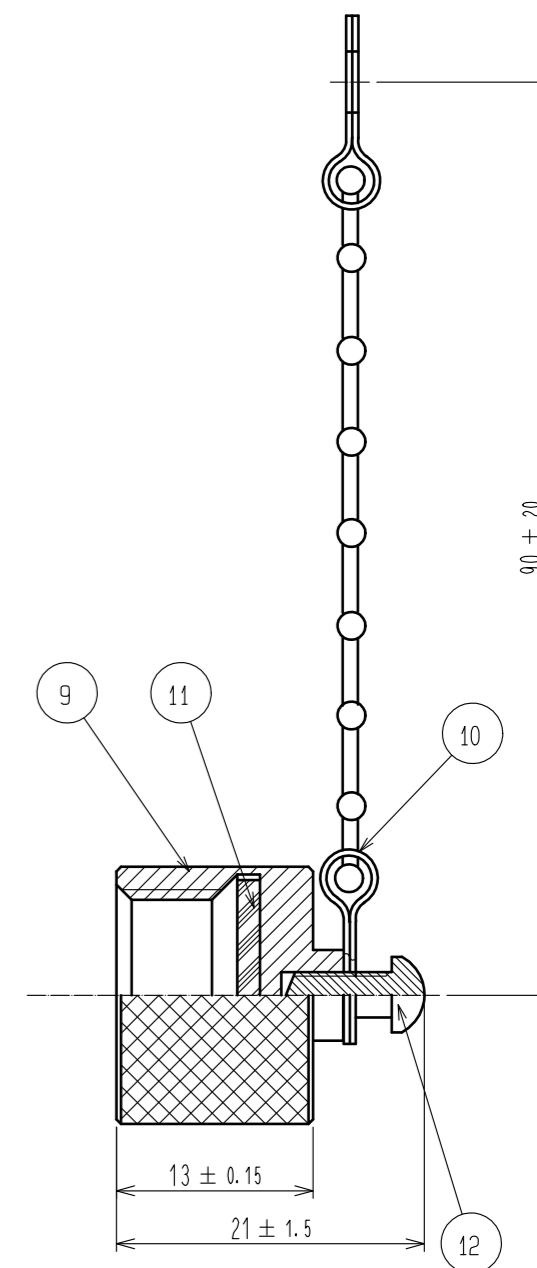
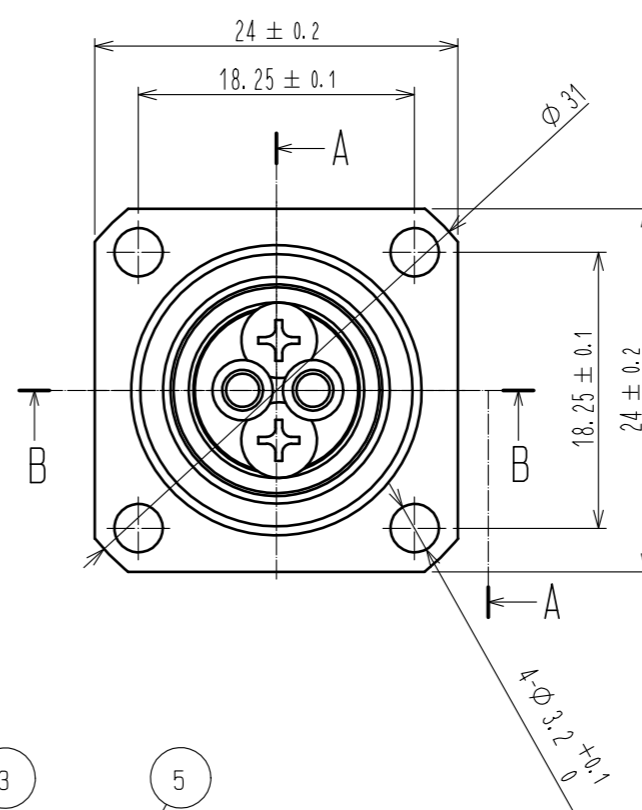
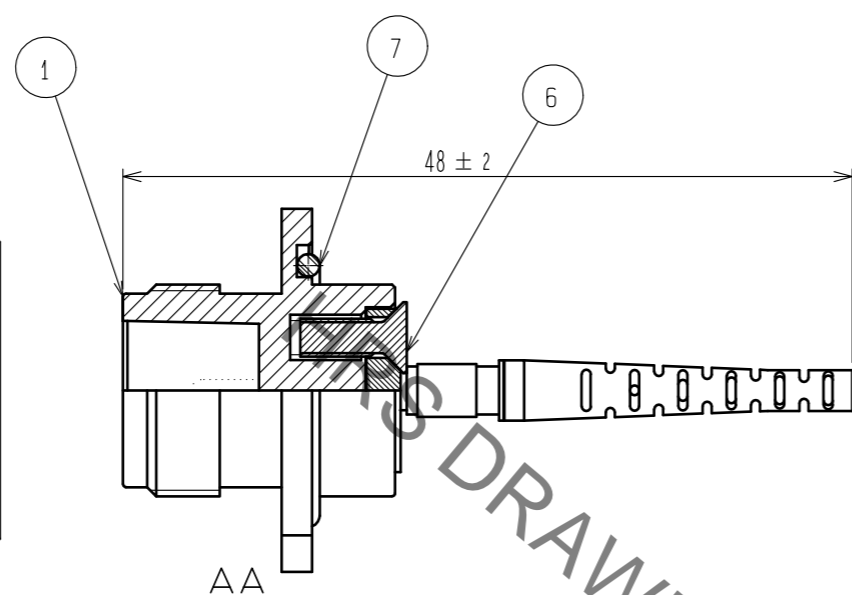
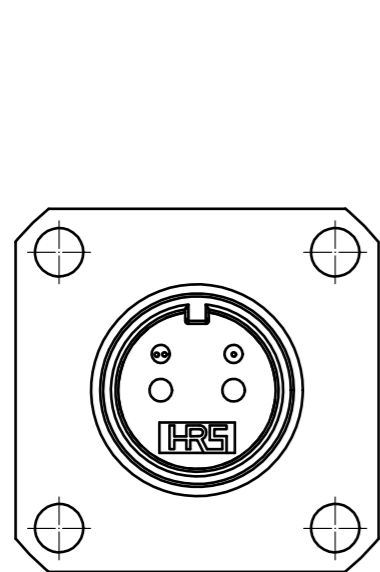


Jun.1.2020 Copyright 2020 HIROSE ELECTRIC CO., LTD. All Rights Reserved.
 In case of consideration for using Automotive equipment / device which demand high reliability, kindly contact our sales window correspondents.



PANEL CUTOUT

6	STAINLESS STEEL		12	STAINLESS STEEL	NYELOCK
5	SYNTHETIC RESIN		11	SYNTHETIC RUBBER	
4	BRASS	NICKEL PLATING	10	STAINLESS STEEL	
3	BRASS	NICKEL PLATING	9	ALUMINIUM ALLOY	ANODIC OXIDE COATING
2	BRASS	NICKEL PLATING	8	PIANO WIRE	ZINC PLATING
1	ZINC DIECAST	NICKEL PLATING	7	SYNTHETIC RUBBER	
NO.	MATERIAL	FINISH . REMARKS	NO.	MATERIAL	FINISH . REMARKS

UNITS mm			SCALE 2 : 1	COUNT 	DESCRIPTION OF REVISIONS	DESIGNED	CHECKED	DATE
HRS HIROSE ELECTRIC CO., LTD.			APPROVED : MT. SHIBUTANI	18.02.02	DRAWING NO.	EDC-176663-31-00		
			CHECED : FS. YOSHIDA	18.02.02	PART NO.	MF10S-WDRFNGC01-0200(31)		
			DESIGNED : TY. SATO	18.02.02	CODE NO.	CL709-0557-5-31		
			DRAWN : MK. INOUE	18.02.01				