

HARTING RJ Industrial® IP 20 Standard Patch cables CAT 5



General Information:

The HARTING standard patch cables are designed for Industrial Ethernet cabling systems in an environment of limited mechanical stress. Applications in control cabinets require high-quality cables with a limited size of the connector.

These cables fit absolutely that kind of applications. Additionally the connectors are small enough for multi-port switches and compact industrial devices.

Halogen free PUR and PA materials proofes HARTING Ethernet Patch cables for reliable industrial applications.

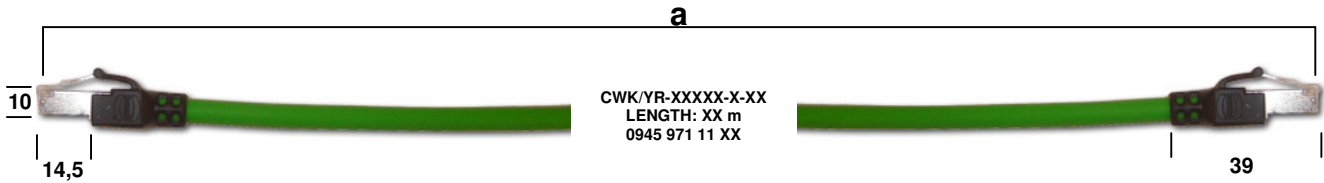
In cooperation with the new IP 30 Switch HARTING can offer a complete solution for networks and cabling inside of switch cabinets.

Features:

- 2 x RJ45 shielded connector
- over moulded design with Polyamid
- protection booth for locking lever
- halogen free materials
- compact design for multiport jacks
- Cable SFTP AWG 26/7,
- PUR chemical resistant cable jacket
- 100% electrical tested @ 500VDC/min
- option of green and black cable
- RoHS compliant

Electrical data:	Mechanical characteristics:
<ul style="list-style-type: none"> ▪ Category 5 acc. ISO IEC 11801:2002-09 ▪ Wiring 1:1 acc. to EIA/TIA 568B ▪ Impedance 100 Ohms ▪ Mating Face acc. IEC 60603-7 	<ul style="list-style-type: none"> ▪ Operating temperature -20 °C to + 60 °C ▪ Mating cycles: > 250 ▪ Protection grade: IP20 ▪ Retention Force: > 50N/60s

Dimensions:



part numbers*:	colour:	length a:
09 45 971 1101	green	0.5 m
09 45 971 1102	green	1.0 m
09 45 971 1115	green	1.5 m
09 45 971 1103	green	2.0 m
09 45 971 1116	green	2.5 m
09 45 971 1104	green	3.0 m
09 45 971 1105	green	4.0 m
09 45 971 1106	green	5.0 m
09 45 971 1109	green	7.5 m
09 45 971 1112	green	10.0 m
09 45 971 1113	green	15.0 m
09 45 971 1114	green	20.0 m

part numbers*:	colour:	length a:
09 45 971 1121	black	0.5 m
09 45 971 1122	black	1.0 m
09 45 971 1135	black	1.5 m
09 45 971 1123	black	2.0 m
09 45 971 1136	black	2.5 m
09 45 971 1124	black	3.0 m
09 45 971 1125	black	4.0 m
09 45 971 1126	black	5.0 m
09 45 971 1129	black	7.5 m
09 45 971 1132	black	10.0 m
09 45 971 1133	black	15.0 m
09 45 971 1134	black	20.0 m

*preferred items in bold

Further Industrial Ethernet Cable assemblies please refer to our Ethernet catalogue!

Version 1.0 – 01.02.2006
Technical modification reserved!