



Han® PushPull, type acc. to IEC 61 076-3-117 variant 14 cable to cable housing

Features

- HARTING PushPull technology
- Ideal for prototyping
- Can be combined with panel feed-throughs for power, data and signal

Technical characteristics

Locking	PushPull technology acc. to IEC 61 076-3-117 variant 14
Degree of protection	IP 65 / IP 67
Outer cable diameter	6.5 ... 9.5 mm / 9 ... 13 mm
Mating cycles	min. 750
Temperature range	-40 °C ... +70 °C
Housing material	Plastic, black
Flammability acc. to UL 94	V0

Identification	Part No.	Drawing	Dimensions in mm
----------------	----------	---------	------------------

Han® PushPull cable to cable housings, plastic
(Order housing bulkhead mounting and insert separately)

for outer cable diameter 6.5 ... 9.5 mm

09 35 002 0431

for outer cable diameter 9 ... 13 mm

09 35 002 0433

Suitable bulkhead housing, plastic

for power, 5-poles, 690 V / 16 A, incl. housing bulkhead mounting and insert

with crimp termination (Order Han® P crimp male contacts separately)

09 35 231 0331

with Han-Quick Lock® termination

0.5 ... 2.5 mm²

09 35 232 0331

0.25 ... 1.5 mm²

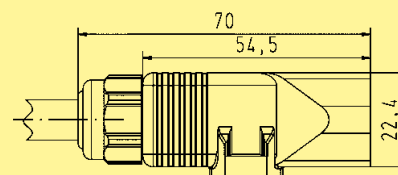
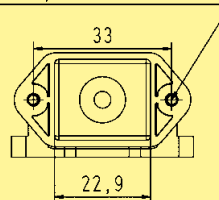
09 35 234 0331

Coding element power

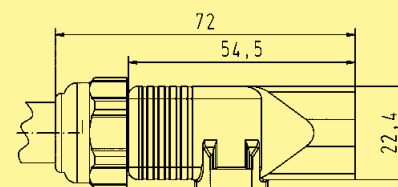
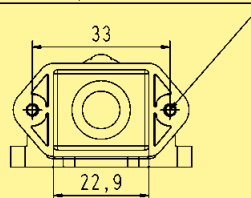
10 pieces each for device and cable side

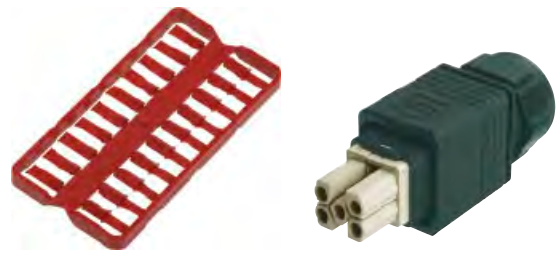
09 35 000 6190

2X REMFORM $\phi 3 \times 8$ TORX screws



2X REMFORM $\phi 3 \times 8$ TORX screws





PushPull

Han® PushPull, type acc. to IEC 61 076-3-118
Connector, 5-poles, 230/400 V, 16 A

Features

- HARTING PushPull technology
- Compact, space-saving design
- Touch-proof
- Cable side: female
 - crimp termination
 - Han-Quick Lock® termination technology
 Field-assembly without special tools
- 4 times coding without contact loss
- NEW: Larger termination cross section for conductors 0.25 - 1.5 mm²

Technical characteristics

Locking	PushPull technology acc. to IEC 61 076-3-117 variant 14 acc. to IEC 61 076-3-118
Mating face	IP 65 / IP 67
Degree of protection	4 + PE
Number of contacts	16 A 690 V 4 kV 3
Electrical data	0.25 – 2.5 mm ²
acc. to DIN EN 61 984	min. 500
Termination cross section	-40 °C ... +70 °C
Mating cycles	Plastic, black
Temperature range	V0
Housing material	
Flammability acc. to UL 94	

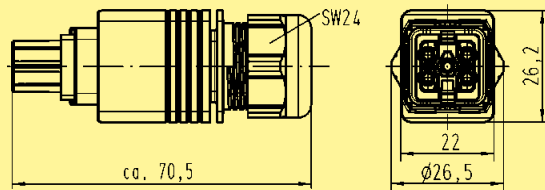
Identification	Part No.	Drawing	Dimensions in mm
----------------	----------	---------	------------------

Connector set, plastic

incl. housing and female insert

with crimp termination
9 – 13 mm clamp range
Han® P crimp contacts
order separately

09 35 231 0423

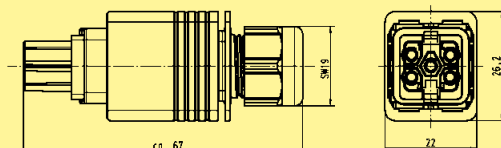


with Han-Quick Lock® termination
9 – 13 mm clamp range
for termination cross section 0.5 - 2.5 mm²

09 35 232 0423

with Han-Quick Lock® termination
6.5 – 9.5 mm clamp range
for termination cross section 0.5 - 2.5 mm²
for termination cross section 0.25 - 1.5 mm²

09 35 232 0421
09 35 234 0421



Dust protection cover IP 40

09 35 002 5412

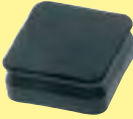



Protection cover IP 65 / IP 67

09 35 002 5411

Coding pins

09 35 000 6190

Han® PushPull, type acc. to IEC 61 076-3-117 variant 14 Accessories

Identification	Part No.	Drawing	Dimensions in mm
<p>Han® PushPull dust protection cover IP 40 rubber (NBR)</p> <p>for device side</p>	09 35 002 5401		
<p>Han® PushPull protection cover IP 65 / IP 67</p> <p>for device side</p> <p>without fixing cord</p>	09 35 002 5403 XL ¹⁾		
<p>with fixing cord</p>	09 35 002 5402 09 35 002 5402 XL ¹⁾		
<p>with nylon fixing cord</p>	09 35 002 5404 09 35 002 5404 XL ²⁾		
<p>Han® PushPull dust protection cover IP 40</p> <p>for cable side</p>	09 35 002 5412		
<p>Han® PushPull protection cover IP 65 / IP 67</p> <p>for cable side</p> <p>without fixing cord</p>	09 35 002 5411		
<p>with nylon fixing cord</p>	09 35 002 5413		