

5

4

3

2

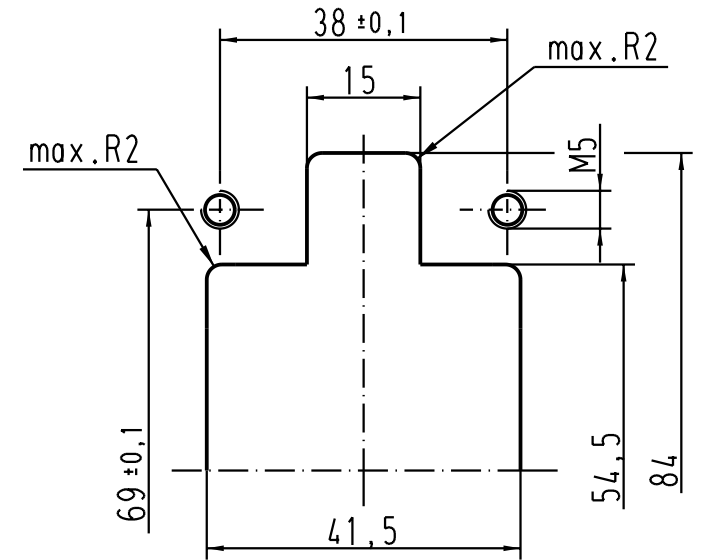
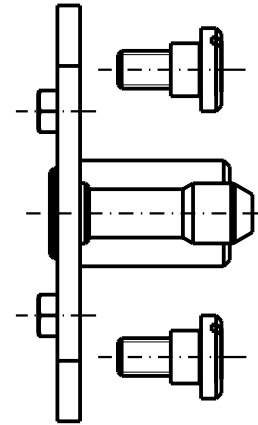
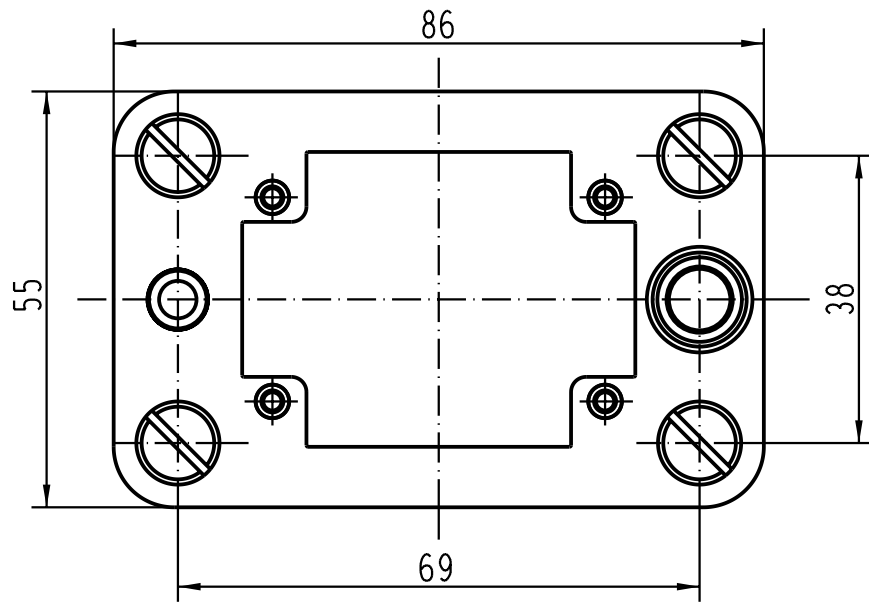
1

D

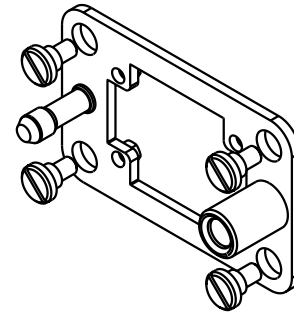
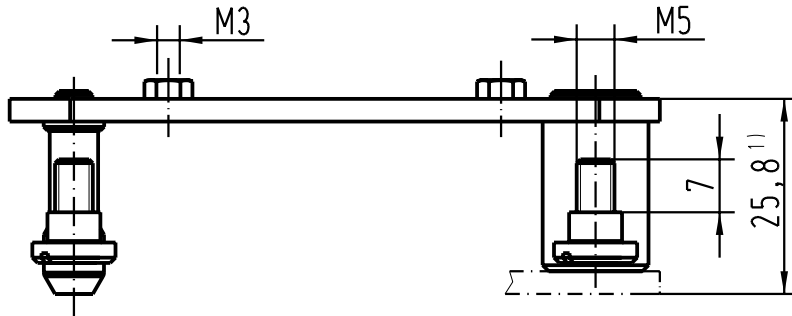
C

B

A





Montageausschnitt/
Panel cut out



- 1) Abstand für elektrische und LWL-Kontakte max. 27mm
für Pneumatik-Kontakte max. 26,5mm
- 1) Distance for electrical and FOC contacts max. 27mm
for pneumatic contacts max.26,5mm

Lieferform : Einzelteile
Kind of delivery: piece parts

 All Dimensions in mm Original Size DIN A 4			Techn. Character.			Nicht tolerierte Masse/ Free size tolerances	
Mod.	Dat.	Name		Dat.	Name	Massstab/Scale	Han 6B-KG Andockrahmen/docking frame
410146	23.07.02	DY	Detail.	10.09.99	ROH		
29603	22.05.01	DY	Insp.		RUE		
29602	17.05.01	DY	Stand.				
29482	06.05.01	DY					
26787			HARTING Electric GmbH & Co. KG				Blatt/ page /
			D-32339 Espelkamp				