

Rack Cabinet (REFK Series)



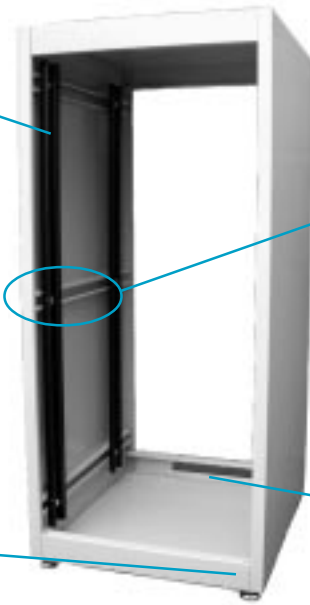
Includes two pair of heavy duty, 10-gauge steel, zinc plated rails, drilled & tapped for 10-32 screws



Infinitely adjustable panel rails (front to back) on welded amhal struts



Strong by design, using interlocking tops, bottoms & sides.



Rear opening with gland plate for easy wire access

FEATURES

- Standard 19" panel width (21.34" overall width)
- Choice of three available depths: 17.5", 24.5" or 31.5" overall - see tables for usable depth information
- Knockdown rack unit is shipped in a flat pack container for easy handling and shipping protection
- Heavy duty 16-gauge solid steel top, bottom and sides
- Four heavy duty, 10-gauge, zinc plated steel, drilled & tapped 10-32 vertical combination rails on EIA universal spacing (5/8 - 5/8 - 1/2 inch) included
- Rails are infinitely adjustable (front to back) on horizontal amhal struts welded to the sides of the rack
- Simple assembly using one bolt in each corner to lock the sides to the top and bottom
- Removable gland plate on rear bottom
- Four oversized, adjustable, nylon based levelling feet and all hardware included
- Recommended maximum weight (REFK1907731 tested) - 1,000 pounds
- Finished with a rugged powder paint

Shipped in a flat pack container for handling ease & protection...

Perfect for tight access areas or 1 person installations...

Rack is knocked down into 5 easy to handle parts (ie...two sides, top, bottom and a pack of 4 panel rails)...



Easy Assembly...



1

Unpack from flat shipping container...



2

Screw levelling feet into base...



3

Slide both sides into base...



4

Slide top into sides, lock together with 8 corner screws...



5

Mount both pairs of tapped panel rails and YOUR DONE!

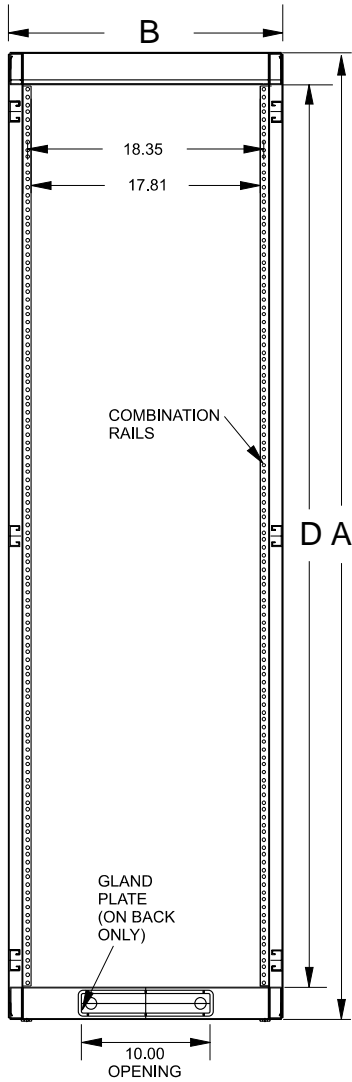
Knockdown

Heavy-Duty Construction!

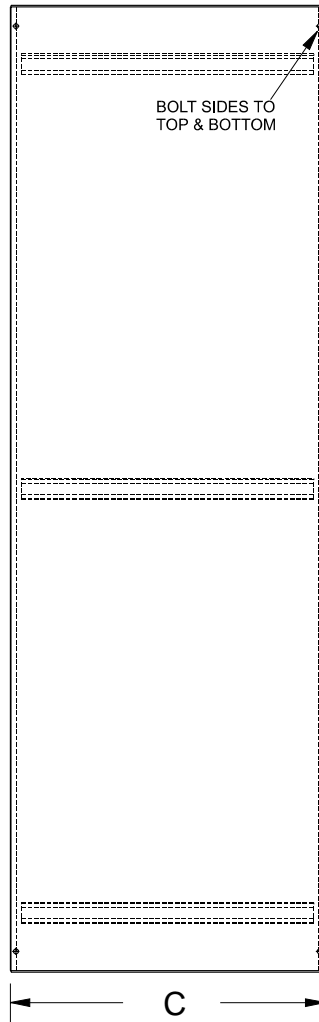


Rack Cabinet (REFK Series)

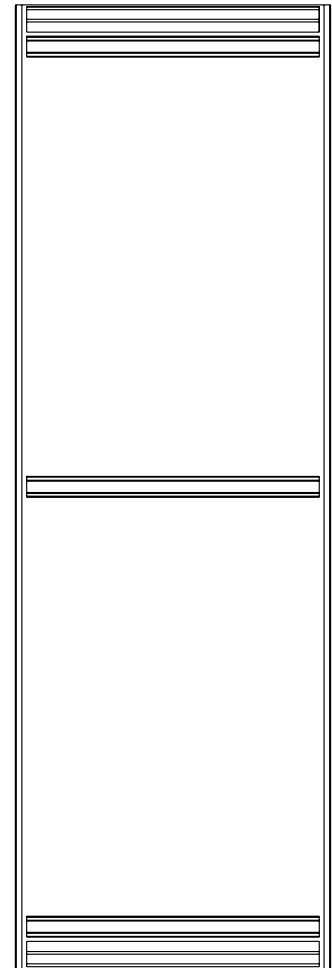
Knockdown



Front / Rear View

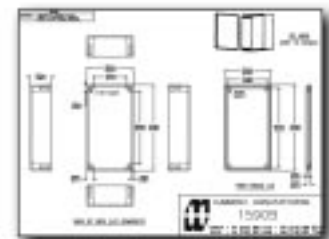
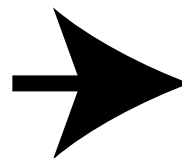


Side View



Side Cross Section

For detailed drawings, CAD files and color photos visit our website at: www.hammondmfg.com



Rack Cabinet (REFK Series)

17.5" Deep

(Usable depth of 16.5" without doors, 16" with doors)

Part Number			Panel Height		Dimensions (Inches)			
Black Textured	Beige Textured	ASA61 Grey Smooth	Inches	Units	A	B	C	D
REFK1903517BK1	REFK1903517CG1	REFK1903517GY2	35.00	20	40.19	21.34	17.5	35.19
REFK1904217BK1	REFK1904217CG1	REFK1904217GY2	42.00	24	47.19	21.34	17.5	42.19
REFK1904917BK1	REFK1904917CG1	REFK1904917GY2	49.00	28	54.19	21.34	17.5	49.19
REFK1905617BK1	REFK1905617CG1	REFK1905617GY2	56.00	32	61.19	21.34	17.5	56.19
REFK1906317BK1	REFK1906317CG1	REFK1906317GY2	63.00	36	68.19	21.34	17.5	63.19
REFK1907017BK1	REFK1907017CG1	REFK1907017GY2	70.00	40	75.19	21.34	17.5	70.19
REFK1907717BK1	REFK1907717CG1	REFK1907717GY2	78.75	45	82.19	21.34	17.5	77.19

24.5" Deep

(Usable depth of 23.5" without doors, 23" with doors)

Part Number			Panel Height		Dimensions (Inches)			
Black Textured	Beige Textured	ASA61 Grey Smooth	Inches	Units	A	B	C	D
REFK1903524BK1	REFK1903524CG1	REFK1903524GY2	35.00	20	40.19	21.34	24.5	35.19
REFK1904224BK1	REFK1904224CG1	REFK1904224GY2	42.00	24	47.19	21.34	24.5	42.19
REFK1904924BK1	REFK1904924CG1	REFK1904924GY2	49.00	28	54.19	21.34	24.5	49.19
REFK1905624BK1	REFK1905624CG1	REFK1905624GY2	56.00	32	61.19	21.34	24.5	56.19
REFK1906324BK1	REFK1906324CG1	REFK1906324GY2	63.00	36	68.19	21.34	24.5	63.19
REFK1907024BK1	REFK1907024CG1	REFK1907024GY2	70.00	40	75.19	21.34	24.5	70.19
REFK1907724BK1	REFK1907724CG1	REFK1907724GY2	78.75	45	82.19	21.34	24.5	77.19

31.5" Deep

(Usable depth of 30.5" without doors, 30" with doors)

Part Number			Panel Height		Dimensions (Inches)			
Black Textured	Beige Textured	ASA61 Grey Smooth	Inches	Units	A	B	C	D
REFK1903531BK1	REFK1903531CG1	REFK1903531GY2	35.00	20	40.19	21.34	31.5	35.19
REFK1904231BK1	REFK1904231CG1	REFK1904231GY2	42.00	24	47.19	21.34	31.5	42.19
REFK1904931BK1	REFK1904931CG1	REFK1904931GY2	49.00	28	54.19	21.34	31.5	49.19
REFK1905631BK1	REFK1905631CG1	REFK1905631GY2	56.00	32	61.19	21.34	31.5	56.19
REFK1906331BK1	REFK1906331CG1	REFK1906331GY2	63.00	36	68.19	21.34	31.5	63.19
REFK1907031BK1	REFK1907031CG1	REFK1907031GY2	70.00	40	75.19	21.34	31.5	70.19
REFK1907731BK1	REFK1907731CG1	REFK1907731GY2	78.75	45	82.19	21.34	31.5	77.19

ACCESSORIES

- Rack panels [Page 82](#)
- Ventilated rack panels [Page 84](#)
- Panel mount doors & chassis [Page 86](#)
- Shelves & slides [Page 87](#)
- Drawers [Page 93](#)
- Cable management [Page 94](#)
- Cooling & ventilating [Page 97](#)
- Rack mount outlet strips [Page 102](#)
- Hardware [Page 119](#)
- Exclusive to this series [Next Page](#)



Hammond Manufacturing Co. Ltd.
394 Edinburgh Rd. North
Guelph, Ontario N1H 1E5 CANADA
© Phone: 519-822-2960 Fax: 519-822-0715



Hammond Manufacturing Co. Inc.
256 Sonwil Dr.
Cheektowaga, NY 14225 USA
Phone: 716-651-0086 Fax: 716-651-0726

SOLID FLUSH DOOR

FEATURES



- Flush mounting
- Reversible right or left opening (by inverting door)
- Integral stiffeners provide sturdiness
- Features lockable latch and spring loaded hinge pins for instant installation or removal
- Allows full access to space between panel rails when open (17.8")
- Constructed from 16 gauge steel, folded all four sides to reduce bowing
- Inside of door includes full height, welded, 6" wide, door stiffener
- Finish matches "REFK" type rack in powder paint

Part Number			Panel Height		Use With Rack Part Number
Black Textured	Beige Textured	ASA 61 Grey Smooth	Inches	Units	
RSDf19035BK1	RSDf19035CG1	RSDf19035GY2	35.00	20	REFK19035
RSDf19042BK1	RSDf19042CG1	RSDf19042GY2	42.00	24	REFK19042
RSDf19049BK1	RSDf19049CG1	RSDf19049GY2	49.00	28	REFK19049
RSDf19056BK1	RSDf19056CG1	RSDf19056GY2	56.00	32	REFK19056
RSDf19063BK1	RSDf19063CG1	RSDf19063GY2	63.00	36	REFK19063
RSDf19070BK1	RSDf19070CG1	RSDf19070GY2	70.00	40	REFK19070
RSDf19077BK1	RSDf19077CG1	RSDf19077GY2	77.00	44	REFK19077

LOUVERED FLUSH DOOR

FEATURES



- Opens right hand only with louvers facing down
- Flush mounting
- Integral welded stiffeners provide sturdiness
- Features lockable latch and spring loaded hinge pins for instant installation or removal
- Allows full access to rack space between panel rails when open (17.8")
- Constructed from 16 gauge steel, folded all four sides to reduce bowing
- Inside of door includes full height, welded 6" wide door stiffener
- Finish matches "REFK" type rack in powder paint

Part Number			Panel Height		Use With Rack Part Number
Black Textured	Beige Textured	ASA 61 Grey Smooth	Inches	Units	
RSDL19035BK1	RSDL19035CG1	RSDL19035GY2	35.00	20	REFK19035
RSDL19042BK1	RSDL19042CG1	RSDL19042GY2	42.00	24	REFK19042
RSDL19049BK1	RSDL19049CG1	RSDL19049GY2	49.00	28	REFK19049
RSDL19056BK1	RSDL19056CG1	RSDL19056GY2	56.00	32	REFK19056
RSDL19063BK1	RSDL19063CG1	RSDL19063GY2	63.00	36	REFK19063
RSDL19070BK1	RSDL19070CG1	RSDL19070GY2	70.00	40	REFK19070
RSDL19077BK1	RSDL19077CG1	RSDL19077GY2	77.00	44	REFK19077

Doors & Casters (REFK Series)

PLEXI FLUSH DOOR

FEATURES

- Metal door frame (painted black) and smoked gray plexiglass window
- Flush mounting
- Reversible right or left opening (by inverting door)
- Integral door frame stiffeners provide sturdiness
- Features lockable latch, magnetic catch and spring loaded hinge pins for instant installation or removal
- Allows full access to space between panel rails when open (17.8")
- Black finish matches "REFK" type rack in powder paint



Part Number	Rack Height		Use With Rack Part Number
	Inches	Units	
REDFP19035BK1	35.00	20	REFK19035
REDFP19042BK1	42.00	24	REFK19042
REDFP19049BK1	49.00	28	REFK19049
REDFP19056BK1	56.00	32	REFK19056
REDFP19063BK1	63.00	36	REFK19063
REDFP19070BK1	70.00	40	REFK19070
REDFP19077BK1	77.00	44	REFK19077

LIGHT DUTY CASTERS

- Set of four light duty casters
- No drilling required
- Single hole mount - used in place of levelling feet in the base of REFK series rack, using the 5/16" - 18 threaded stem (adds 2.75" to rack height)
- Twin nylon swivel wheels with zinc axles and decorative hoods - perfect for office or high profile environments

Part Number	Mfg. Specified Capacity (Lbs.) (Set of 4)	Wheel Diameter (Inches)
1425P	400	2.37



Knockdown

HEAVY DUTY CASTERS

- Set of four medium duty casters - four bolt mounting to hole pattern in base of REFK series rack. No drilling required
- **NOTE: For REFK series - knockdown racks ONLY**
- Features ball bearing swivel and hard composition wheels
- Small foot print 2.125" x 15/16" hole mounting pattern
- Wheels are grey & 2" wheel diameter
- Hard composition wheels (adds 3.8" to rack height)
- Includes mounting hardware

Part Number	Mfg. Specified Capacity (Lbs.) (Set of 4)	Wheel Diameter (Inches)
1425PHD	600	2.00



Hammond Manufacturing Co. Ltd.
394 Edinburgh Rd. North
Guelph, Ontario N1H 1E5 CANADA
© Phone: 519-822-2960 Fax: 519-822-0715



Hammond Manufacturing Co. Inc.
256 Sonwil Dr.
Cheektowaga, NY 14225 USA
Phone: 716-651-0086 Fax: 716-651-0726

Additional Panel Rails (REFK Series)

TAPPED RAILS



- **SOLD IN PAIRS**
- Drilled and tapped (10-32)
- Heavy duty construction - formed from 10 gauge steel
- Full EIA hole centers (5/8 - 5/8 - 1/2 inch spacing)
- Bolts vertically in cabinet to amhal struts
- Includes strut mounting hardware, panel mounting hardware available on page 119
- Zinc plated finish
- Front of rail allows for 19" panel rack mounting
- Rear of rail flange for rear equipment support or accessory mounting

Reminder:
REFK series racks
INCLUDE two pair of these
tapped rails

Part Number (Sold in Pairs)	Panel Height	
	Inches	Units
CCR35TZPL	35.00	20
CCR42TZPL	42.00	24
CCR49TZPL	49.00	28
CCR56TZPL	56.00	32
CCR63TZPL	63.00	36
CCR70TZPL	70.00	40
CCR78TZPL	78.75	45
CCR85TZPL	85.75	49

SQUARE HOLE RAILS



- **SOLD IN PAIRS**
- Square hole punched allowing choice of hardware for 10-32 or 12-24 or M6 thread cage nuts
- Includes a hardware starter quantity (25) of 10-32 cage nuts
- Heavy duty construction - formed from 12 gauge steel
- Full EIA hole centers (5/8 - 5/8 - 1/2 inch spacing)
- Bolts vertically in cabinet to amhal struts
- Includes strut mounting hardware, panel mounting hardware available on page 119
- Zinc plated finish
- Front of rail allows for 19" panel rack mounting
- Rear "L" of rail for rear equipment support or accessory mounting

Part Number (Sold in Pairs)	Panel Height	
	Inches	Units
CPR35SZPL	35.00	20
CPR42SZPL	42.00	24
CPR49SZPL	49.00	28
CPR56SZPL	56.00	32
CPR63SZPL	63.00	36
CPR70SZPL	70.00	40
CPR78SZPL	78.75	45
CPR85SZPL	85.75	49

Reminder:
REFK series racks
INCLUDE two pair of
tapped rails



Additional Cage Nuts

Part Number	Qty. Per Package	Thread
1421CNA25	25	10-32
1421CNA100	100	10-32
1421CNC25	25	12-24
1421CNC100	100	12-24
1421CNB25	25	M6
1421CNB100	100	M6



Cage Nut Installation Tool

- Allows for easy installation of cage nuts in square rail hole
- Spring steel tool
- Part Number **RCNIT**