

# 930XC OTDR

## OPTICAL TIME-DOMAIN REFLECTOMETER



**FAST. ACCURATE. RELIABLE.**

USA PHONE 800.435.0786  
FAX 800.451.2632

CANADA PHONE 866.384.8813  
FAX 800.524.2853

INT'L PHONE +1.815.397.7070  
FAX +1.815.397.9247



**GREENLEE**<sup>®</sup>  
COMMUNICATIONS

# ALL IN ONE OTDR SOLUTION

## OPM, VFL, AND SLS STANDARD ON ALL 930XC MODELS

### FAST.

- **One button test functions.** Start measurements with the push of one button.
- **Autotest.** Automatically sets test parameters for optimum test results.
- **Live fiber testing.\*** Tests fibers without disrupting live services.

### ACCURATE.

- **Graphical interface.** Easy to read, even in low or bright lighting conditions.
- **Up to 38 dB dynamic range.** Probe longer cables and see smaller reflections.
- **Measure lengths and defects.** Quickly locates faults.

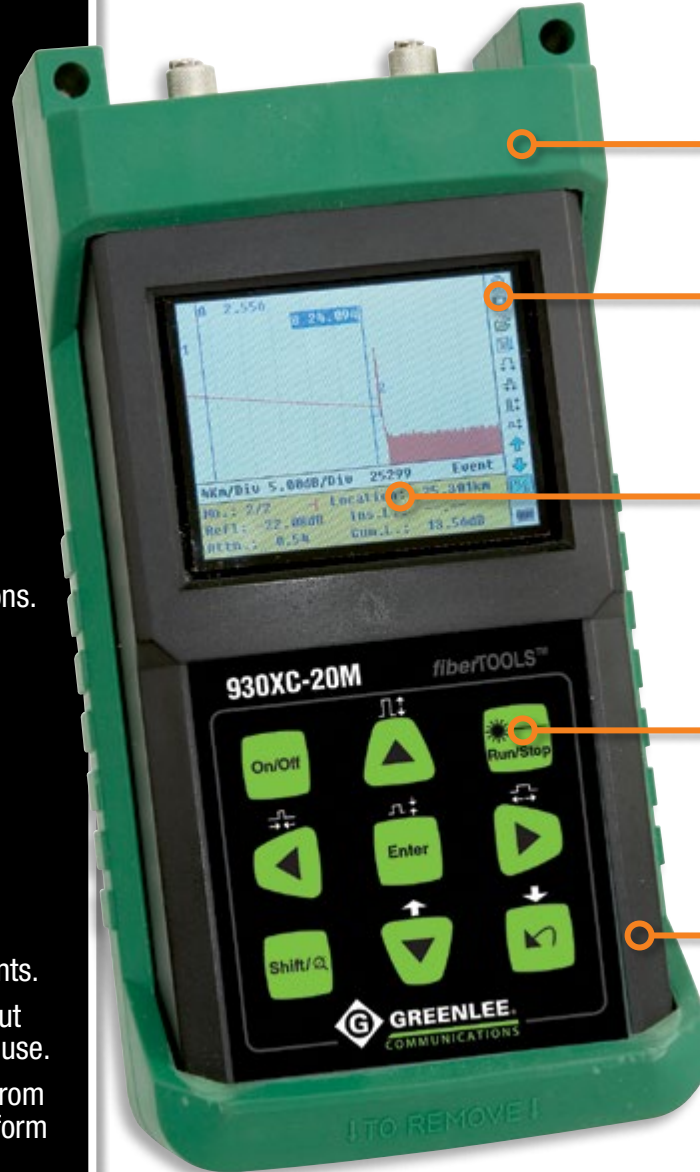
### RELIABLE.

- **Cable acceptance reports.** Generate customized reports that include trace signature and fiber events.
- **Long life battery.** Work longer without recharge – up to 8 hours continuous use.
- **Rugged construction.** Drop-tested from 2m, impact resistant and built to perform (GR-196 certified).
- **BellCore standard** required by major telcos.
  - Meets all specifications at specified temperature extremes.
  - Operational and within specification after a simulated dust storm.
  - EMI resistant as per GR-1089.
  - Rain resistant with no direct paths of entry

CABLE ACCEPTANCE | FAULT LOCATING | FIBER TESTING

\* 930XC-30F only.

# 930XC OTDR



PROTECTIVE RUBBER BOOT

MENU FUNCTIONS for settings and trace store/recall.

LARGE COLOR LCD DISPLAY

RUN/STOP BUTTON True single button testing.

SEALED MEMBRANE PANEL



DC CHARGER PORT

OPTICAL POWER METER

USB PORT

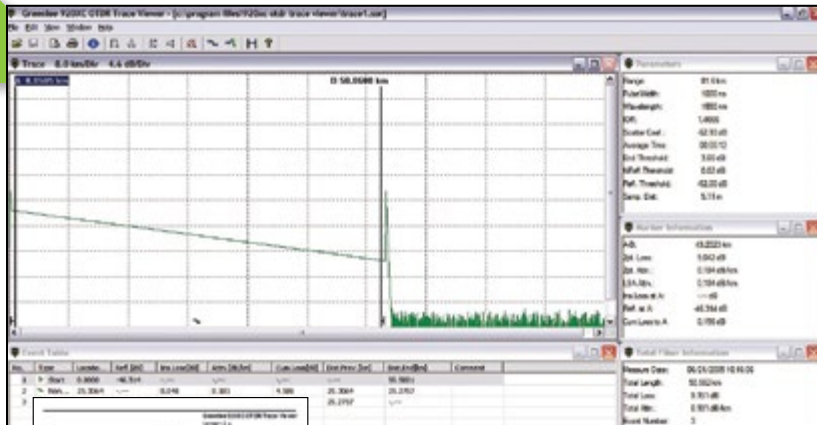
VISUAL FAULT LOCATOR

OTDR PORT

OTDR 1625nm live out of band testing port

Now available with password protection

# OTDR CABLE ACCEPTANCE REPORT GENERATION



## OTDR TRACE VIEWER

- View and measure all trace files stored on the 930XC
- Bellcore Standard OTDR Report (SOR) file storage format
- Display trace, fiber events and measurement information on single screen
- Display measurement settings used to acquire trace

## CABLE ACCEPTANCE REPORT

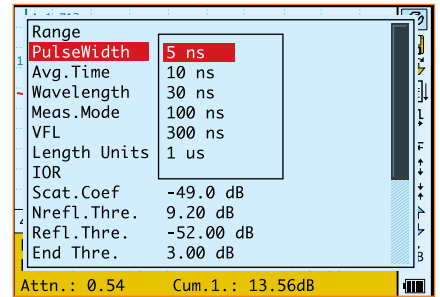
- Generate professional OTDR cable acceptance reports
- Cable acceptance report can be customized by user
- Trace signature and fiber events are printed on each report

# SPECIFICATIONS

MODEL	930XC-20C	930XC-30F	930XC-30P	930XC-20M
Wavelength (± 20nm)	1310/1550	1310/1550/1625	1310/1490/1550	850/1300
Dynamic Range (dB) <sup>a</sup>	35	38/37/37	38/37/37	21/24
Event Deadzone (m) <sup>b</sup>	1m	1m	1m	≤2.5m
Attenuation Deadzone (m) <sup>b</sup>	4.5m	4.5m	4.5m	≤12m
Pulsewidth	5, 10, 30, 100, 300, 1us, 2.5us, 10us, 20us			12, 30, 100, 275, 1us/30, 100, 275, 1us, 2us
Selectable Ranges (km)	0.3, 1.3, 2.5, 5, 10, 20, 40, 80, 120, 160, 240			0.1, 0.3, 0.5, 1.3, 2.5, 5, 10/0.1, 0.3, 0.5, 1.3, 2.5, 5, 10, 20, 40, 80
Average Time	15s/30s/1 min/2 min/3 min			
Distance Measurement Accuracy	±(1m + 5 X 10 <sup>-5</sup> x distance + sampling space)			
Connector Type	PC or APC (interchangeable FC, SC, ST)			
Reflection Detect Accuracy	±4 dB			
Attenuation Detect Accuracy	±0.05 dB/dB			
Measurement Data Storage	1,000 test curves			
Data Transmission	RS-232/USB port			
Visual Fault Locator (VFL)	-3dBm; 650nm			
Optical Power Meter (OPM)	InGaAs			
OPM Wavelengths	850, 1300, 1310, 1490, 1550, 1625nm			
OPM Range	+6 to -70dBm (+6 to -60dBm 850nm)			
OPM Display resolution	0.01dB			
OPM MOD Identification	1kHz, 2kHz			
Stabilized laser Source (SLS)	Wavelength same as selected in OTDR mode ≤ -7dBm			
Power Supply	NiMH chargeable battery/AC adapter			
Battery Life	Support over 8 hours operating on one charge or over 20 hours standby			
Operating Temperature	-10° to 50° C			
Storage Temperature	-20° to 60° C			
Relative Humidity	0 to 95% (non-condensing)			
Weight	1.9 lbs. (0.87 kg)			
Dimensions	7.7" H x 3.9" W x 2.4" L (196mm x 100mm x 64mm)			
Compliance	BelCore GR196, CE, FCC, UL, WEEE			
Fiber Analysis Software	Version 3.2			
Password Protection	Owner defined password feature (Recoverable)			

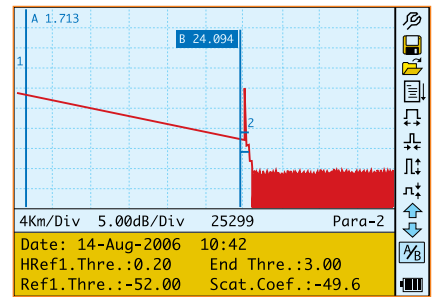
\*Specifications subject to change without notice <sup>a</sup> Using a pulse width of 20us <sup>b</sup> Using a pulse width of 5ns

# OTDR OPERATION MODES



## INSTRUMENT SETUP

- Auto mode selects optimal distance range and pulsewidth
- All settings selected through easy to use menu selections
- Short pulsewidth (5ns) available for high-resolution measurements
- Color and high intensity monochrome settings for bright sunlight conditions
- Complete control of fiber analysis settings for auto measurement of splice and end of fiber



## OTDR TRACE

- View and measure test results
- One button measurement of distance and loss information

### Event View Mode

Page through each loss event for location in (meters/miles and feet) and loss in dB

### Manual Measurement Mode

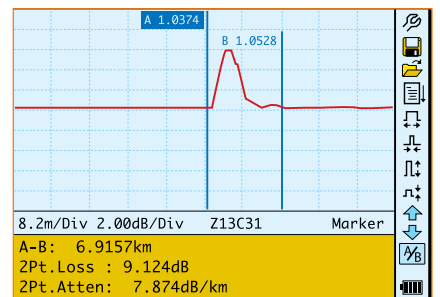
Perform manual measurement with A and B cursor for distance, loss and reflectance measurements

### Measurement Setup

View settings used to acquire measurement

### Fiber Analysis Software

View settings used for auto measurement of events



## HI-RESOLUTION EVENT VIEWING

- Easy to view and measure in high-resolution mode
- One button to jump to high-resolution view
- One button jump back to entire trace view
- 0.1 meter sampling resolution
- Active cursor snaps to the next event in the fiber analysis table



## EACH MODEL COMES WITH:

- Instrument
- Rechargeable battery
- OTDR Trace Viewer software
- Installation disk
- Data transfer cable
- AC adapter
- Protective cover
- Carrying case
- Warranty card
- Certificate of calibration

Default language is English and Spanish. Alternate languages of Russian, Portuguese, Polish, and German available upon request.



## ORDERING INFORMATION

CAT NO.	UPC NO.	DESCRIPTION
<b>DUAL WAVELENGTH SINGLE MODE OTDR</b>		
930XC-20C-UPC-FC	02610	OTDR, SM DUAL WAVE, 13/15, OPM, SLS, UPC FC
930XC-20C-UPC-SC	02609	OTDR, SM DUAL WAVE, 13/15, OPM, SLS, UPC SC
930XC-20C-UPC-ST	02611	OTDR, SM DUAL WAVE, 13/15, OPM, SLS, UPC ST
930XC-20C-APC-FC	02613	OTDR, SM DUAL WAVE, 13/15, OPM, SLS, APC FC
930XC-20C-APC-SC	02612	OTDR, SM DUAL WAVE, 13/15, OPM, SLS, APC SC
<b>TRIPLE WAVELENGTH SINGLE MODE OTDR</b>		
930XC-30P-UPC-FC	02615	OTDR, SM TRIPLE PON, 13/14/15, OPM, SLS, UPC FC
930XC-30P-UPC-SC	02614	OTDR, SM TRIPLE PON, 13/14/15, OPM, SLS, UPC SC
930XC-30P-UPC-ST	02616	OTDR, SM TRIPLE PON, 13/14/15, OPM, SLS, UPC ST
930XC-30P-APC-FC	02618	OTDR, SM TRIPLE PON, 13/14/15, OPM, SLS, APC FC
930XC-30P-APC-SC	02617	OTDR, SM TRIPLE PON, 13/14/15, OPM, SLS, APC SC
<b>TRIPLE WAVELENGTH SINGLE MODE FILTERED OTDRS</b>		
930XC-30F-UPC-FC	02620	OTDR, SM TRIPLE FILT, 13/15/16, OPM, SLS, UPC FC
930XC-30F-UPC-SC	02619	OTDR, SM TRIPLE FILT, 13/15/16, OPM, SLS, UPC SC
930XC-30F-UPC-ST	02621	OTDR, SM TRIPLE FILT, 13/15/16, OPM, SLS, UPC ST
930XC-30F-APC-FC	02626	OTDR, SM TRIPLE FILT, 13/15/16, OPM, SLS, APC FC
930XC-30F-APC-SC	02623	OTDR, SM TRIPLE FILT, 13/15/16, OPM, SLS, APC SC
<b>MULTI-MODE OTDR</b>		
930XC-20M-UPC-FC	02607	OTDR, MM DUAL WAVE, 85/13, OPM, SLS, UPC FC
930XC-20M-UPC-SC	02606	OTDR, MM DUAL WAVE, 85/13, OPM, SLS, UPC SC
930XC-20M-UPC-ST	02608	OTDR, MM DUAL WAVE, 85/13, OPM, SLS, UPC ST
<b>SINGLE MODE/MULTI-MODE OTDR KIT</b>		
SM MM KIT	27294	930XC-20M-UPC-SC and 930XC-20C-APC-SC

CAT NO.	UPC NO.	DESCRIPTION
<b>ACCESSORIES</b>		
AC-ADPT-20-UNI	25691	Universal Power Supply
AC-CONN-FC-L2	20996	FC Connector (For UPC & APC)
AC-CONN-ST-L2	20997	ST Connector (For UPC)
AC-CONN-SC-UPC-L2	06445	SC Connector (For UPC)
AC-CONN-SC-APC-L2	20998	SC Connector (For APC)
ADAPTER, OPM SC (930XC)	06446	OPM SC Adapter
ADAPTER, OPM FC (930XC)	06447	OPM FC Adapter
ADAPTER, OPM ST (930XC)	06448	OPM ST Adapter
AC-CONN-ST-L2	20997	ST Connector (For UPC Only)
1155-0526	10582	Vehicle Adapter (6FT, 5.5 OD, 2.1M)
20988	20988	Soft Carry Case
20989	20989	USB Cable For OTDR
20990	20990	RS-232 Cable
20999	20999	NiMH Battery (9.6V)
946	60571	Cleaning Wand (10/PK)
948	60692	ReelCleaner™ Connector Cleaning System
LC-500	05625	500m Universal Launch Cable
FCP-2.5	03576	2.5mm Fiber Cleaning Pen
FCP-1.25	03577	1.25mm Fiber Cleaning Pen

Greenlee sells a variety of 1m patch cords to protect your bulkhead. Please contact customer service for more details.

