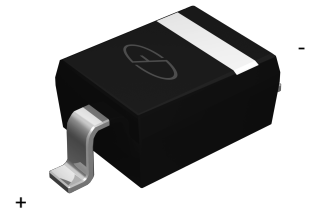


Features

- Low Turn-on Voltage
- Fast Switching
- PN Junction Guard for Transient and ESD Protection
- Designed for Surface Mount Application
- Plastic Material –UL Recognition Flammability Classification 94V-O



SOD-323



Schematic Diagram

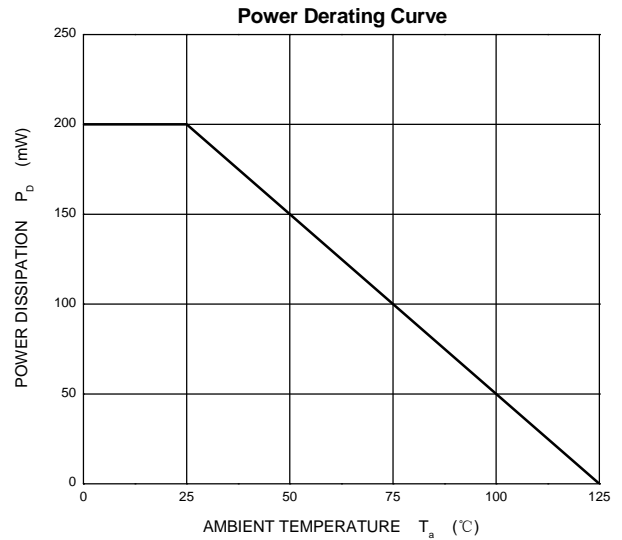
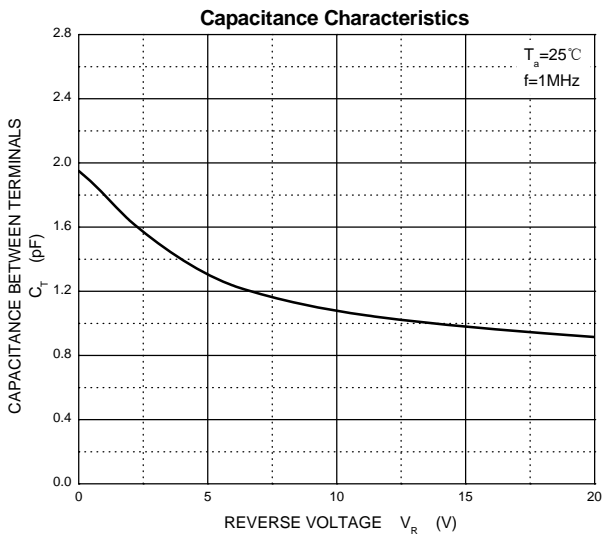
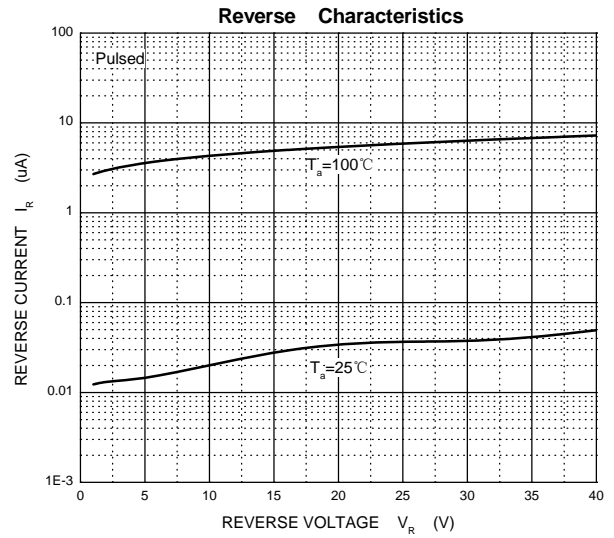
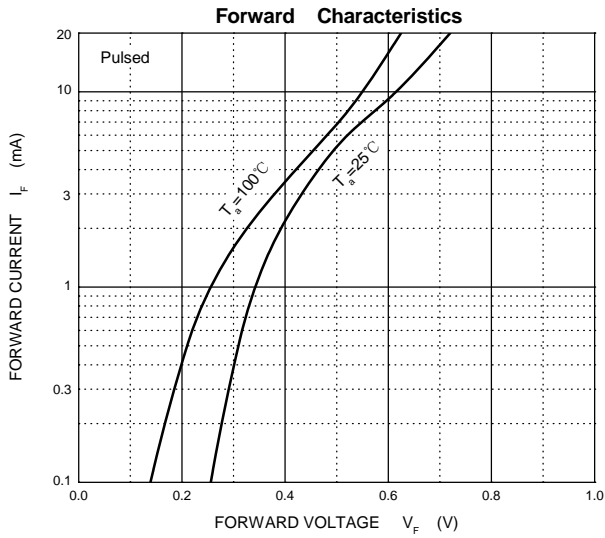
Absolute Maximum Ratings (T_A=25°C unless otherwise noted)

Parameter	Symbol	Value	Unit
Peak Repetitive Peak Reverse Voltage	V _{RRM}	70	V
Working Peak Reverse Voltage	V _{RWM}		
DC Blocking Voltage	V _R		
Forward Continuous Current	I _F	70	mA
Non-repetitive Peak Forward Surge Current @ t=8.3ms	I _{FSM}	100	mA
Power Dissipation	P _D	200	mW
Thermal Resistance from Junction to Ambient	R _{θJA}	500	°C/W
Junction Temperature	T _J	125	°C
Storage Temperature	T _{STG}	-55 to +150	°C

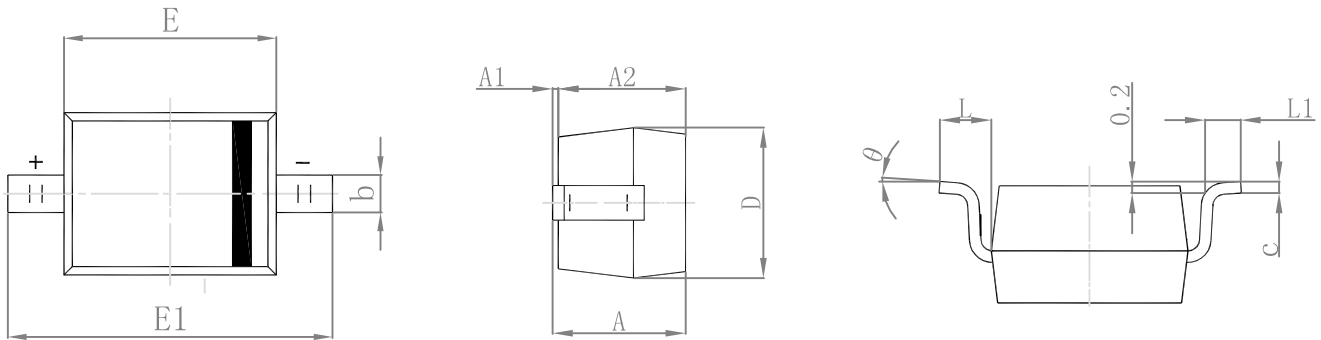
Electrical Characteristics (T_A=25°C unless otherwise noted)

Parameter	Symbol	Test Conditions	Min	Typ	Max	Unit
Forward Voltage	V _{F1}	I _F =1mA	-	-	0.41	V
	V _{F2}	I _F =15mA	-	-	1	V
Reverse Current	I _R	V _R =50V	-	-	100	nA
Capacitance between Terminals	C _T	V _R =0V, f=1MHz	-	-	2	pF
Reverse Recovery Time	t _{rr}	I _F =I _R =10mA I _{rr} =0.1X I _R , R _L =100Ω	-	-	5	ns

Typical Characteristics Curves

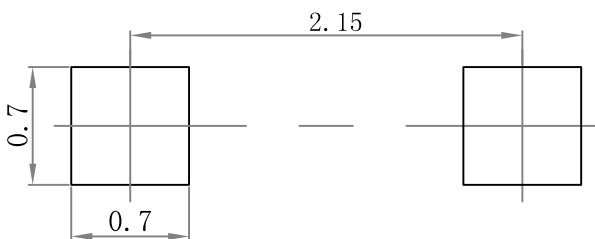


Package Outline Dimensions SOD-323



Symbol	Dimensions In Millimeters		Dimensions In Inches	
	Min.	Max.	Min.	Max.
A		1.000		0.039
A1	0.000	0.100	0.000	0.004
A2	0.800	0.900	0.031	0.035
b	0.250	0.350	0.010	0.014
c	0.080	0.150	0.003	0.006
D	1.200	1.400	0.047	0.055
E	1.600	1.800	0.063	0.071
E1	2.550	2.750	0.100	0.108
L	0.475 REF.		0.019 REF.	
L1	0.250	0.400	0.010	0.016
θ	0°	8°	0°	8°

Suggested Pad Layout



Note:

1. Controlling dimension: in millimeters.
2. General tolerance: $\pm 0.05\text{mm}$.
3. The pad layout is for reference purposes only.

Marking and Ordering Information

Device	Package	Marking	Quantity	HSF Status
GSBAS70WS	SOD-323	K73	3000pcs / Reel	RoHS Compliant