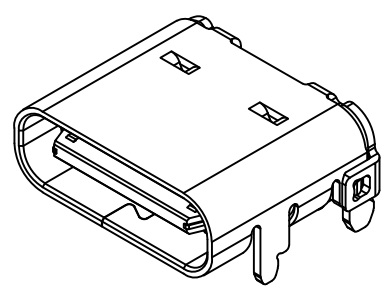
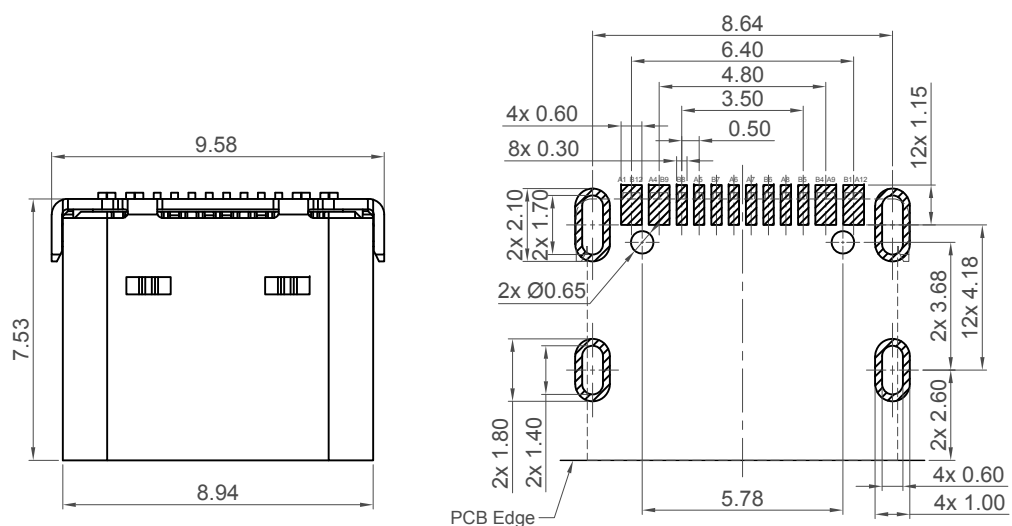


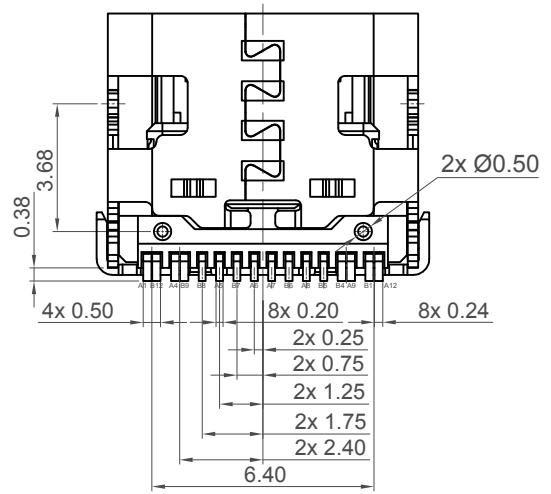
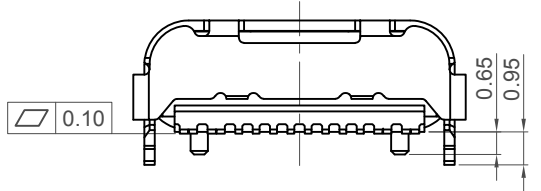
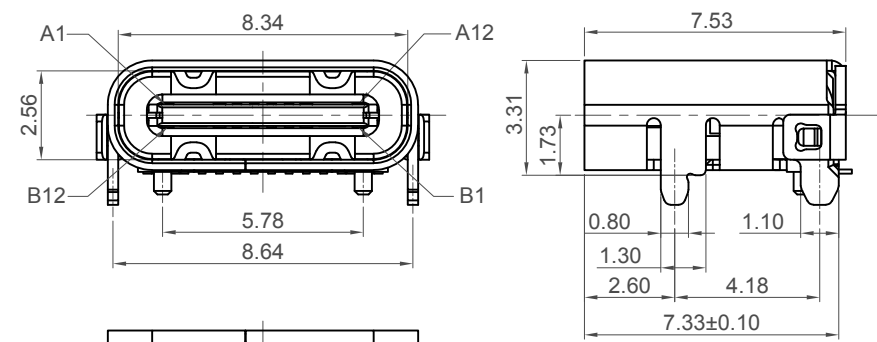
H
G
F
E
D
C
B
A



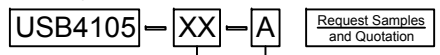
Recommended PCB Layout

As viewed from component side Tolerance:±0.05mm

▨ Solder Area □ Component Outline



Ordering Grid



Contact Plating
GF = Gold Flash
15 = 15µ" Gold

Packing Options
A = Tape & Reel

Pin	Signal	Mating Sequence	Pin	Signal	Mating Sequence
A1	GND	First	B12	GND	First
A4	Vbus	First	B9	Vbus	First
A5	CC1	Second	B8	SBU2	Second
A6	Dp1	Second	B7	Dn2	Second
A7	Dn1	Second	B6	Dp2	Second
A8	SBU1	Second	B5	CC2	Second
A9	Vbus	First	B4	Vbus	First
A12	GND	First	B1	GND	First
SHELL			SHELL		

Specifications

Material

Insulator: LCP, UL 94V-0, Black
Contact: Copper Alloy
Shell: Stainless steel
Mid Plate:Stainless Steel

Plating

Contact: See Ordering Grid
Solder Tails: Gold Flash Over Nickel
Shell: Nickel

Electrical

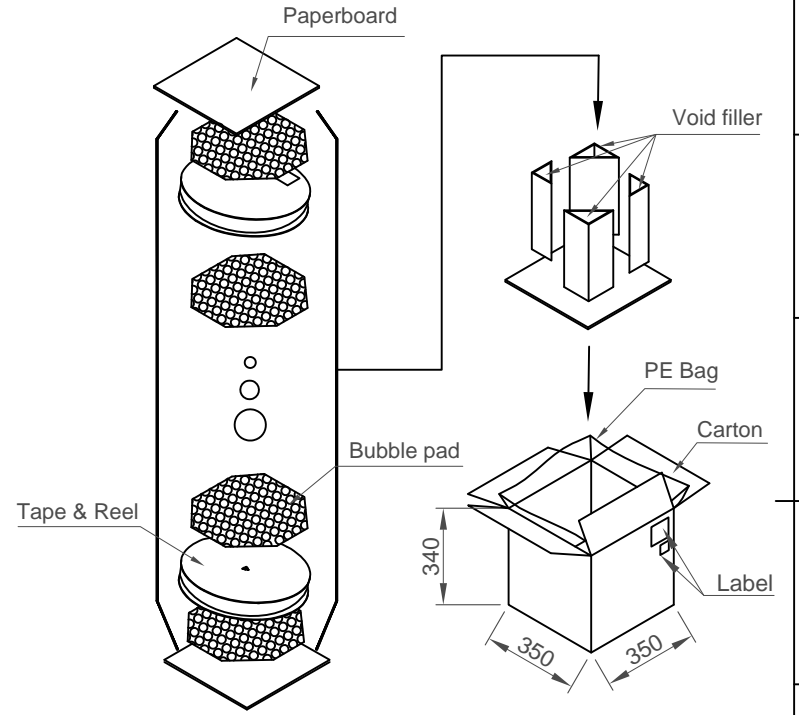
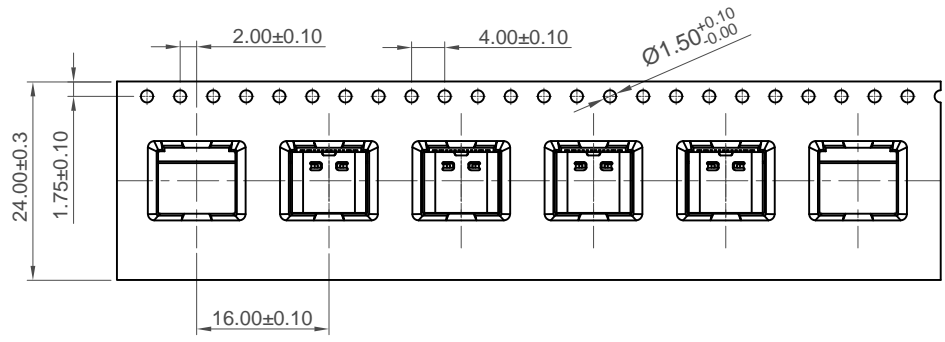
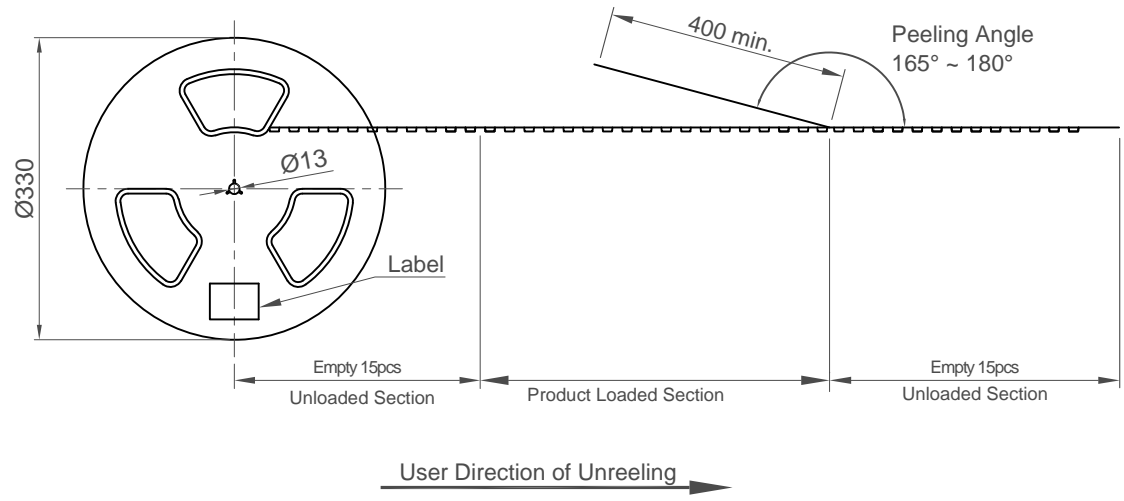
Current Rating: 5.00A collectively for Vbus pins
6.25A collectively for GND pins
1.25A for B5 pin
0.25A per pin for all other pins
Voltage Rating: 20V DC
Contact Resistance: 40mΩ max initial.
50mΩ max after test
Dielectric Withstanding Voltage: 100V AC
Insulation Resistance 100MΩ min

Mechanical & Environmental

Operating Temperature: -40°C to +85°C
Mating Force: 5 to 20 N.
Unmated Force: 6 to 20 N after test
Durability: 10,000 cycles

Part Number		Product Description			This drawing is confidential and copyright of Global Connector Technology, Ltd (GCT). This drawing must not be copied or disclosed without written consent. E & OE	www.gct.co
USB4105		USB Type C Receptacle for USB 2.0				
Drawing Date		SMT Type, PCB Top Mount				
4th October 2019						
By	CC	Tolerances (Except as Noted)	Units:			
Detail	Drawing Release	Length	Metric (mm)			
Revision	A1	Angle				
Date	24/10/19	X. ± 0.38				
		X.X ± 0.30	X ± 2°			
		X.XX ± 0.15	X.X ± 1°			
		X.XXX ± 0.10				
Not to Scale	Drawn By	Sheet No.				
	CC	1/2				

1 2 3 4 5 6 7 8



Notes:
 Peeling off force of top tape: 0.1-1.3N (Peeling direction as shown)

Materials:
 Carrier Tape: Polystyrene (PS)
 Top Tape: PC
 Reel Tape: Polystyrene (PS)
 Bag: PE

Pcs / Reel	Reels / Carton	Total Quality
800	11	8,800 pcs

Part Number		Product Description	
USB4105		USB Type C Receptacle for USB 2.0	
Drawing Date		SMT Type, PCB Top Mount	
4th October 2019			
By	CC	Tolerances (Except as Noted)	Units:
Detail	Drawing Release	Length	Metric (mm)
Revision	A1	X. ± 0.38	RoHS COMPLIANT 2011/65/EU
Date	24/10/19	X.X ± 0.30	Deca-SIDE
		X.XX ± 0.15	This drawing is confidential and copyright of Global Connector Technology, Ltd (GCT). This drawing must not be copied or disclosed without written consent. E & OE
		X.XXX ± 0.10	
		Angle	©
		X. ± 2°	Not to Scale
		X.X ± 1°	
		3rd Angle Projection	Drawn By
			CC
			Sheet No.
			2/2

