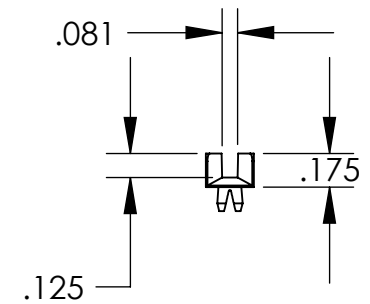
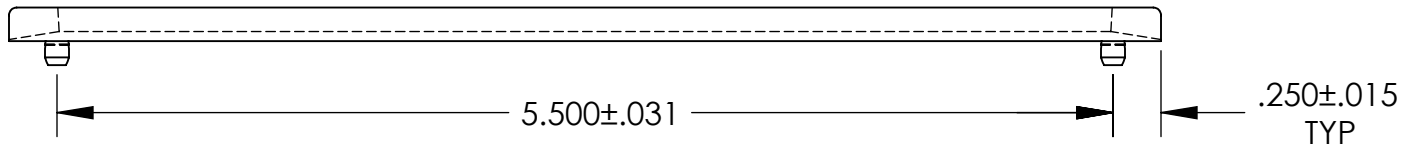
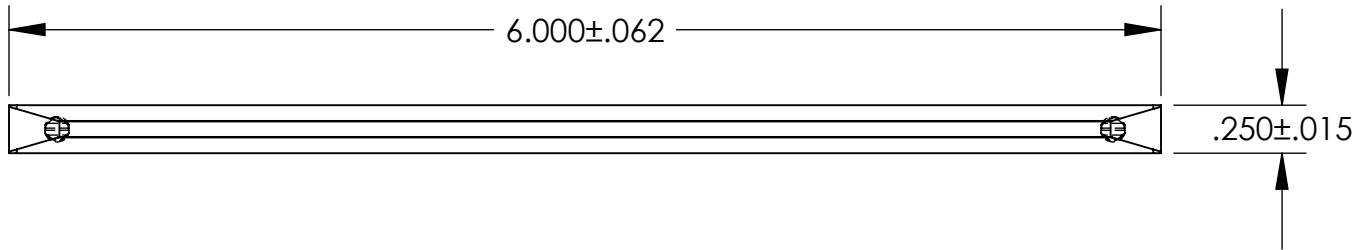


UNCONTROLLED DOCUMENT



NOTES:
 THE PCB CARD GUIDE IS DESIGNED TO FIT A .125 +.003/-.001 FRONT
 DIAMETER HOLE AND A .120 ±.005 x .218 SLOT REAR HOLE

TOLERANCES UNLESS NOTED

- ±.005 ON DIMENSIONS THRU .625
- ±.008 ON DIMENSIONS .626 THRU 1.000
- ±.010 ON DIMENSIONS 1.001 THRU 1.500
- ±.015 ON DIMENSIONS LARGER THAN 1.500
- ±.015 ON FRACTIONAL DIMENSIONS

WE RESERVE THE RIGHT
 TO DISCONTINUE ITEMS,
 CHANGE SPECIFICATIONS
 OR DESIGN AT ANY TIME
 WITHOUT NOTICE AND
 WITHOUT INCURRING
 ANY OBLIGATIONS

| | | |
|------------------------------------------------------------------------------------------------------------------|--------------|-----------|
| PROPERTY OF | | |
| MICRO PLASTICS INC. | | |
| CATALOG DRAWING NYLON PCB CARD GUIDES MICRO P/N 21CGS00600WS DWG. # 21CGS00600WS FILE SERVER\ENG\WEB | | |
| MATERIAL: | | NYLON 6/6 |
| DATE | SCALE 1:1 | SD |