

QUARTER TURN - SPRING LOADED



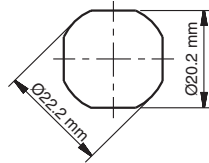
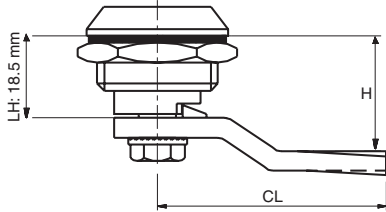
*Example with cam. Cam sold separately.

Specifications

- Material:
 - Housing: PA6 GFR 30
 - Driver: Zinc Alloy (Zamak) DIN-EN-1774-ZnAl4Cu1 or PA6 GFR 30
 - Cam: Steel or Plastic
 - Gasket: Polyurethane

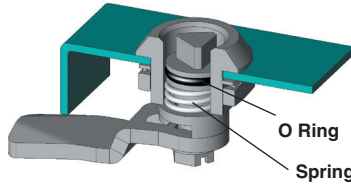
Features

- Specially designed internal spring provides tactile resistance.
- Cam does not rotate beyond quarter turn due to stop lip.
- Applications: Electric panels, machinery covers



Cut Out

Sealing in plastic housing.
This application aims to improve the sealing level in quarter turns.



Zinc Alloy (Zamak) - Black

Nylon



Driver/Head Style



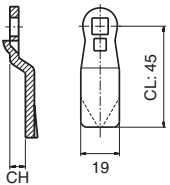
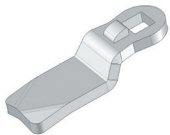
Slot (2x4)

Item Number		Driver	Cam
Zinc Alloy / Nylon	Nylon	Slot (2x4)	Select Cam Below
76020124200	76020204200		

Steel Cam

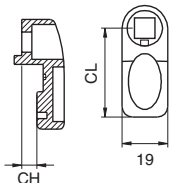
Item Number	CH (mm)	CL (mm)	H (mm)
30403033	0	45	18.5
30403439	1	45	19.5
30403159	2	45	20.5
30403063	3	45	21.5
30403149	4	45	22.5
30403160	6	45	24.5
30403161	8	45	26.5
30403162	10	45	28.5
30403045	12	45	30.5
30403163	14	45	32.5
30403151	16	45	34.5
30403165	18	45	36.5

Item Number	CH (mm)	CL (mm)	H (mm)
30403166	20	45	38.5
30403167	22	45	40.5
30403168	24	45	42.5
30403169	-2	45	16.5
30403170	-4	45	14.5
30403171	-6	45	12.5
30403172	-8	45	10.5
30403173	-10	45	8.5
30403174	-12	45	6.5
30403175	-14	45	4.5



Material: Steel
Finish: Zinc plated
Thickness: 4 mm

Nylon Cam



Item Number	CH (mm)	CL (mm)	H (mm)
30402004	0	35	18.5
30402011	0	25	18.5
30402005	6	35	24.5
30402008	4	45	22.5
30402013	-4	45	14.5