

VLT100 Series

100W single and quad output AC/DC Power Supplies

EOS brand VLT100 family of power supplies offer a full 100-watts convection cooling, 6.7W per cu. inch power density and ultra high efficiency at over 85%. Fitted in a slim line 5.0" x3.04"x1.073" package the VLT100 is the ideal AC/DC power solution for data networking, industrial and multimedia applications.

Single and quad outputs in all popular DC outputs are available as well as an optional cover kit for ease of manufacturability. The VLT100 family is RoHs compliant and our factory is ISO 14001 environmentally approved. Worldwide safety standards apply and the power supply is fitted with OVP and OCP standard features.



Features :

- > 100 W convection cooled rating.
- > Small 5.0x3.04x1.073 inch form factor.
- > 6.7 / in³ power density.
- > High efficiency > 85%.
- > Low conducted and radiated noise.
- > Power good and power fails signal.
- > Cover Kit accessory available.

Model Number	Output	Nom Vout	Set Point	Output Current	Min. Load
VLT100-1001 ²	V1	12V	12V	7.5A	1A
VLT100-1002 ²	V1	15V	15V	6.67A	0.5A
VLT100-1003 ²	V1	24V	24V	4.2A	0.1A
VLT100-1004 ²	V1	48V	48V	2.1A	0.2A
VLT100-4000	V1	5V	12.5	12.0A	3.0A
	V2	12	12.25V	4.0A	0.1A
	V3	-5V	-5.0V	0.8A	0.0A
	V4	-12V	-12.0V	0.8A	0.0A
VLT100-4001	V1	5V	5.1V	12.0A	3.0A
	V2	24V	24.5V	2.0A	0.1A
	V3	12V	12.0V	0.8A	0.0A
	V4	-12V	-12.0V	0.8A	0.0A
VLT100-4002	V1	5V	5.1V	12.0A	3.0A
	V2	15V	16.0V	3.0A	0.1A
	V3	-5V	-4.8V	0.8A	0.0A
	V4	-15V	-15.5V	0.8A	0.0A
VLT100-4003	V1	5V	5.1V	12.0A	3.0A
	V2	12V	12.0V	4.0A	0.1A
	V3	24V	24V	0.8A	0.0A
	V4	-12V	-12.0V	0.8A	0.0A
VLT80CK	Metal cover kit accessory				

1) Maximum current per output channel. Do not exceed total output power rating.
2) Power fail & Power good signal on quad output models only.

INPUT SPECIFICATION		
AC Input	Universal	90 to 264Vac
Efficiency		85% Typical
Input Frequency		47-63 Hz
Input Current	Full Load at low line	2.2Arms , max
Inrush Current	High Line , cold start	35A,max

OUTPUT SPECIFICATION		
Output Power	Convection cool	100W max
Voltage Set Point		See table
Hold-Up Time	115V	10ms
Voltage Set Point Accuracy	V1 V2,V3,V4	±2% +5%
Line Regulation	Low line to high line	±0.3%
Load Regulation Min to 50% & 50% to Max load	Single O/p 12V,15V,24V & 48V Quad O/p V1 V2,V3,V4	± 2.5, ±3, ±3 & ± 2% ± 1% ±5%
Transient Response	50% to full load Voltage Deviation Recovery Time	10%, max <1 ms
OVP	V1 only	6.2V, +0.4V
Overload Protection	Primary limited	140W,±30W
Short Circuit Protection	Auto recovery <6s	Short Term
Ripple and Noise	3.3V & 5V Other voltages	50mV 3% max
Power Fail Signal ²	TTL	1.5ms warning
Power Good Signal ²	Delay after V1 high	100ms, min
Output Rise Time		<50ms

All EOS power supplies have UL, CSA and Nemko safety compliance and medical versions meet UL60601-1 standards. All our products are RoHs compliant. Visit us at www.eospower.com. EOS brand power supplies and patents are owned exclusively by EOS Power. All Rights Reserved.



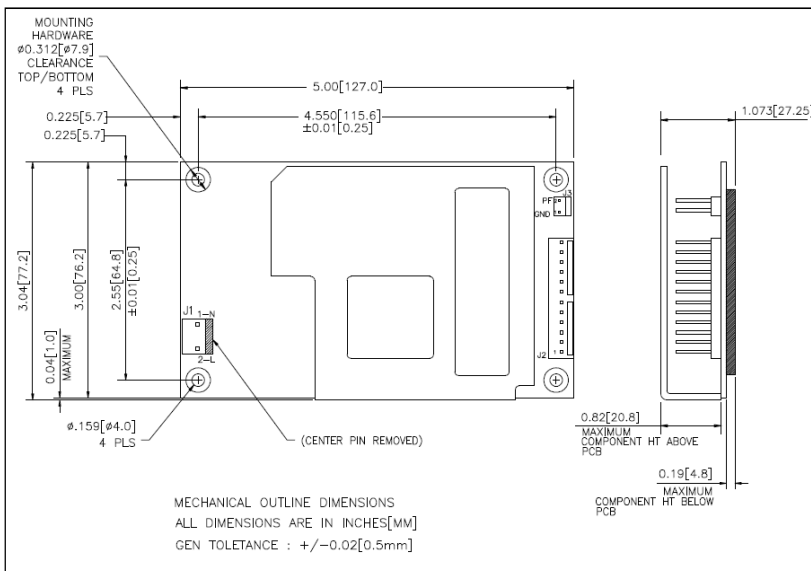
VLT100 Series

100W single and quad output AC/DC Power Supplies



EMC AND SAFETY SPECIFICATIONS	
CE Mark	Complies with the LVD
EMC	EN5022-B, CISPR22-B, FCC Part 15 Class B, EN50082-1
Agency Approval	VDE , UL, c-UL, NEMKO
Safety Standard	IEC60950, N60950, UL60950, CSA ,C22.2 No. 60950 Class 1 SELV
Safety File Number	VDE: 104751 UL: E150565

ENVIRONMENTAL SPECIFICATION		
Operating Temperature	No derating Linear derate to 50%	0 to 50° C 51 to 70° C
Storage Temperature		-40 to 85° CC
Cooling	Convection	100W
Relative humidity	Non condensing	95%, max
MTBF	MIL - HDBK-217F	> 200,000 hrs



OUTPUT CONNECTOR J2		
	Single Output	Quad Output
Pin 1,2,3,4	V1	V1
Pin 5,6,7,8	DC Return	DC Return
Pin 9,10	NC	V2
Pin 11	NC	V3
Pin 12	NC	V4

MECHANICAL SPECIFICATION	
AC Input Connector J1	Molex 3 position, 0.156 center Header 26-60-4030 or equivalent
Ground Connector	Spade connector. 0.25"
DC Output connector J2	Molex12 position, 0.156 center Header 26-60-4120 or equivalent
Output connector J3	Molex 2 position, 0.100 center Header 22-23-2021 or equivalent
Size	5.0"x3.04"x1.073"
Weight	9oz (250g)

INPUT SPADE CONNECTOR	
GND	AC Ground

INPUT CONNECTOR J1	
Pin 1	AC Neutral
Pin 2	AC Line

INPUT CONNECTOR J3	
Pin 1	Common
Pin 2	Power Fail/Good

All EOS power supplies have UL, CSA and Nemko safety compliance and medical versions meet UL60601-1 standards. All our products are RoHs compliant. Visit us at www.eospower.com. EOS brand power supplies and patents are owned exclusively by EOS Power. All Rights Reserved.

