

Gravity: I/O Expansion Shield for OpenMV Cam M7 SKU:DFR0578

Gravity: I/O Expansion Shield for OpenMV Cam M7 is an expansion shield specially designed for the OpenMV Cam M7. It is compatible with various sensors and electronic modules of [Gravity Series](#), plug and play, no soldering required. It not only helps you avoid the complex wiring, welding and other operations, but also helps you quickly complete wiring and get started with the sensors or electronic modules, to build prototypes faster.

This expansion shield is equipped with a 5V external power supply port and a 3.3V/VIN power switch, which makes the expansion shield able to drive high current components such as motors and servos. There are 9 sets of digital ports, 1 set of analog port, 1 set of serial port and 2 sets of I2C ports on the expansion shield. Additional, there is an onboard 3.3V LDO, which meets the power demand of multiple modules at the same time.

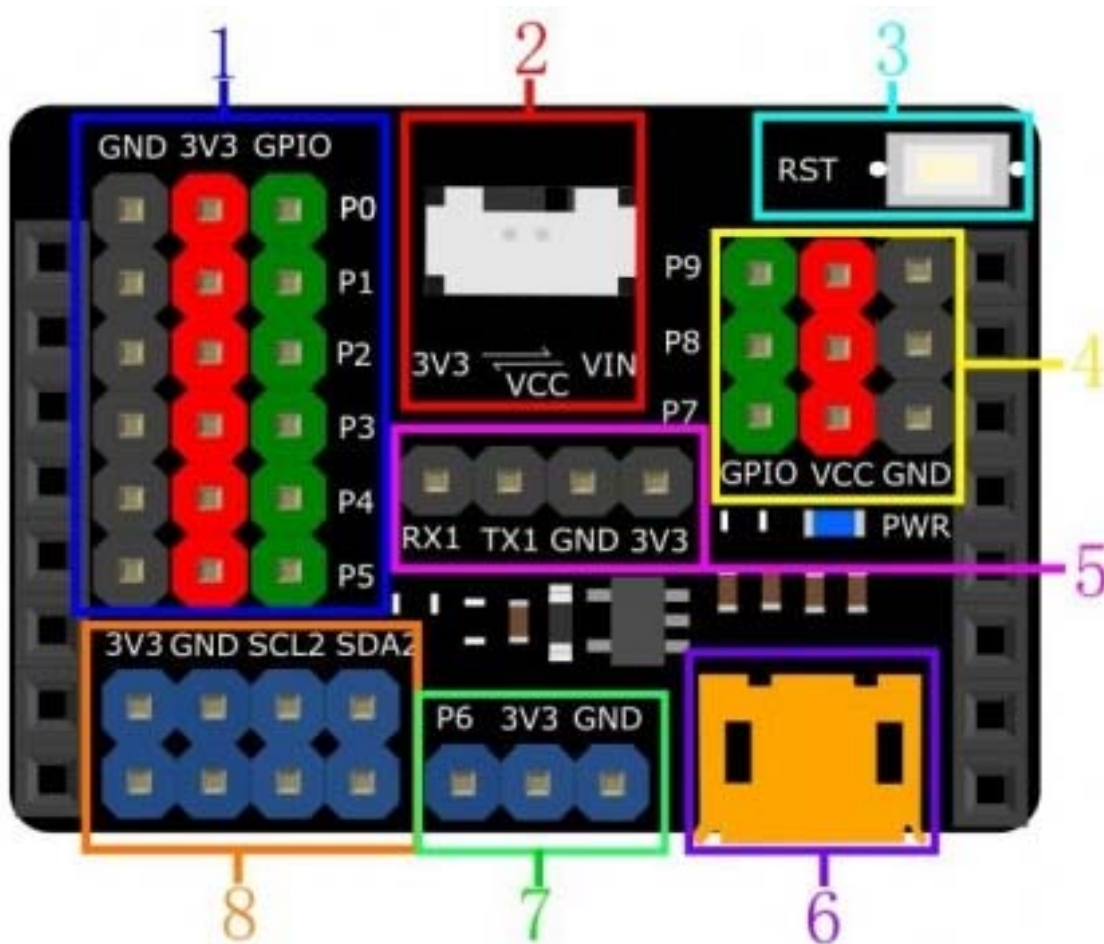


- 1.The USB port of the expansion shield is only used for power supply, so it cannot be used for programming or debugging. The continuous current of the USB port is recommended to be controlled within 1A.
- 2.When put the expansion shield on the OpenMV motherboard, please pay attention to the direction. The USB port of the expansion shield should be on the same side as the USB port of the OpenMV motherboard.
- 3.Because OpenMV motherboard works at 3.3V, limited by the voltage, it does not support 5V analog input. All signal pins are 0~3.3V.
- 4.If you need to drive high current components such as servos and motors, please connect them to P7~P9 ports, then connect the external power supply, and turn the power switch to VIN side. Otherwise, the OpenMV motherboard may be damaged due to high current.
- 5.The power supply of P7,P8,P9 port can be selected 3.3V or VIN by the power switch. The power supply voltage of the remaining ports are all 3.3V.

Specification

- External Power Supply Voltage (onboard USB port): $5.0 \pm 0.1V$
- External Power Input Current (onboard USB port): $<1A$
- Connector: Gravity series standard connector
- Ports: 9 sets of digital ports, 1 set of analog port, 1 set of serial port, 2 sets of I2C ports
- Interface Signal Level: High Level 3.3V, Low Level 0V
- Analog Input Range: 0~3.3V
- Onboard LDO Output Voltage: 3.3V
- Onboard LDO Output Current: $<500mA$
- Board Size: 35.6mm*24.8mm

Board Overview

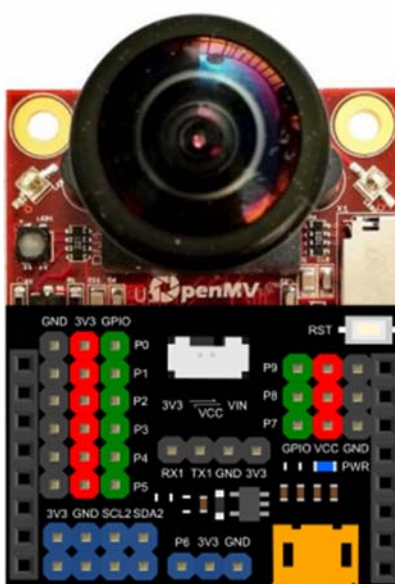


Gravity: I/O Expansion Shield for OpenMV Cam M7

Num	Label	Description
1	Digital Port	connect to Gravity series digital modules power supply voltage of the port:3.3V Pin:P0~P5
2	Power Switch	choose the power supply voltage of P7,P8,P9 ports, 3.3V or VIN(external power supply)
3	Reset Button	reset the OpenMV
4	Digital Port (High Current)	drive high current components such as motors and servos power supply voltage of the port: 3.3V or VIN (can be selected by the power switch) Pin:P7,P8,P9
5	UART Port	connect to Gravity series UART modules power supply voltage of the port:3.3V Pin:P0,P1 (UART 1)
6	External Power Port	connect to the external power supply input voltage:5V
7	Analog Port	connect to Gravity series analog modules power supply voltage of the port:3.3V Pin:P6
8	I2C Port	connect to Gravity series I2C modules power supply voltage of the port:3.3V Pin:P4,P5 (I2C 2)

Insertion Direction

When put the expansion shield on the OpenMV motherboard, please pay attention to the direction. The USB port of the expansion shield should be on the same side as the USB port of the OpenMV motherboard.



Tutorial

This tutorial shows how to use this expansion shield in 2 cases.

The first case takes the [Gravity: Analog Sound Sensor](#) as an example to demonstrate the basic wiring operation, and then reads the analog value through the OpenMV motherboard to obtain the sound value.

In the second case, the [9g Metal Gear Micro Servo](#) is used as an example to demonstrate the usage of the external power supply and the power switch, then the rotation of the servo is controlled by the OpenMV motherboard.

At present, we have written a software library of 10 commonly used sensors or modules, click to open the [link](#).

Requirements

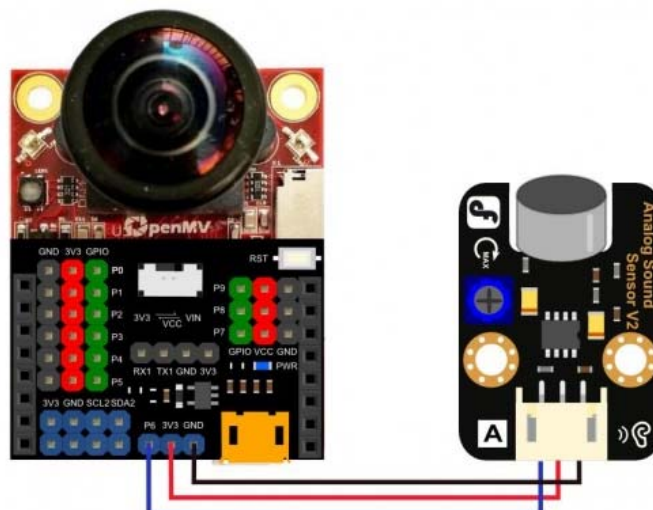
- **Hardware**
- OpenMV Cam M7 – A Machine Vision Camera x1
- Gravity: I/O Expansion Shield for OpenMV Cam M7 x1
- Gravity 3pin sensor Cable (or several DuPont Cables) x1
- MicroUSB Cable x2
- Gravity: Analog Sound Sensor x1
- 9g Metal Gear Micro Servo x1

- **Software**
- OpenMV IDE, Click to Download OpenMV IDE

Case 1 : Analog Sound Sensor

Connection Diagram

As shown below,connect the sensor to the P6 port of the expansion shield.



Sample Code

```
# Analog sound sensor is used to measure the sound.
# Hardware : analog sound sensor, OpenMV
# connect:
#   Sensor    OpenMV
#   VCC       3V3
#   GND       GND
#   data      P6

from pyb import ADC, Pin
import time

adc=ADC(Pin('P6')) # Must always be "P6".
while True:
    val=adc.read() # Read the analog value
    print(val)
    time.sleep(100)
```

Expected Result

Copy the sample code in the OpenMV IDE and click the start button.
As shown in the picture below, when there is sound, the value will increase significantly.

```
Serial Terminal
7
0
0
2
0
4
149
551
3441
3449
3268
366
0
1
1
0
22
0
```

Search Results Serial Terminal

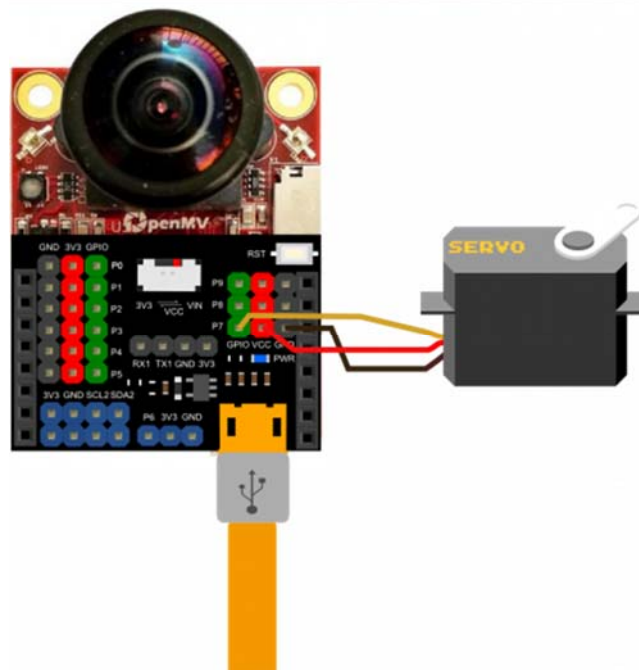
Case 2 : Analog Servo(PPM)

Connection Diagram

As shown below,connect the servo to the P7 port of the expansion shield.



The external power supply must be connected to the USB port of the expansion shield! The power switch must be turned to the VIN side.



Sample Code

```
# Servo Control Example
# This example shows how to use your OpenMV Cam to control servos.
# Hardware : Servo, OpenMV
# connect:
#   Servo   OpenMV
#   VCC     5V
#   GND     GND
#   data    P7

import time
from pyb import Servo, Pin

s1 = Servo(1) # P7

while(True):
    s1.angle(0)
    time.sleep(1000)
    s1.angle(90)
    time.sleep(1000)
    s1.angle(0)
    time.sleep(1000)
    s1.angle(-90)
    time.sleep(1000)
```

Expected Result

Copy the sample code in the OpenMV IDE and click the start button, you will see the servo constantly spinning.