

Part # Search

[About Curtis](#)

[Distributors](#)

[Reps](#)

[Competitor Cross-Reference](#)

[Catalog PDF's](#)

[Contact Us](#)

[What's New](#)

[Shipment Track](#)

[FAQ's](#)

[Glossary](#)

[Check Stock](#)

[Distributor Login](#)

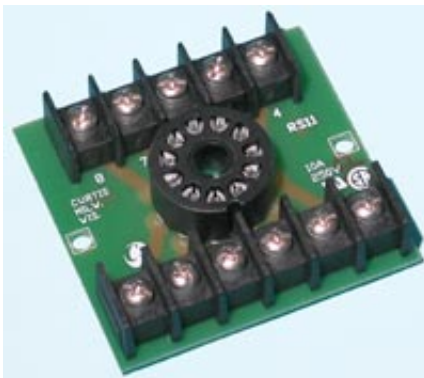
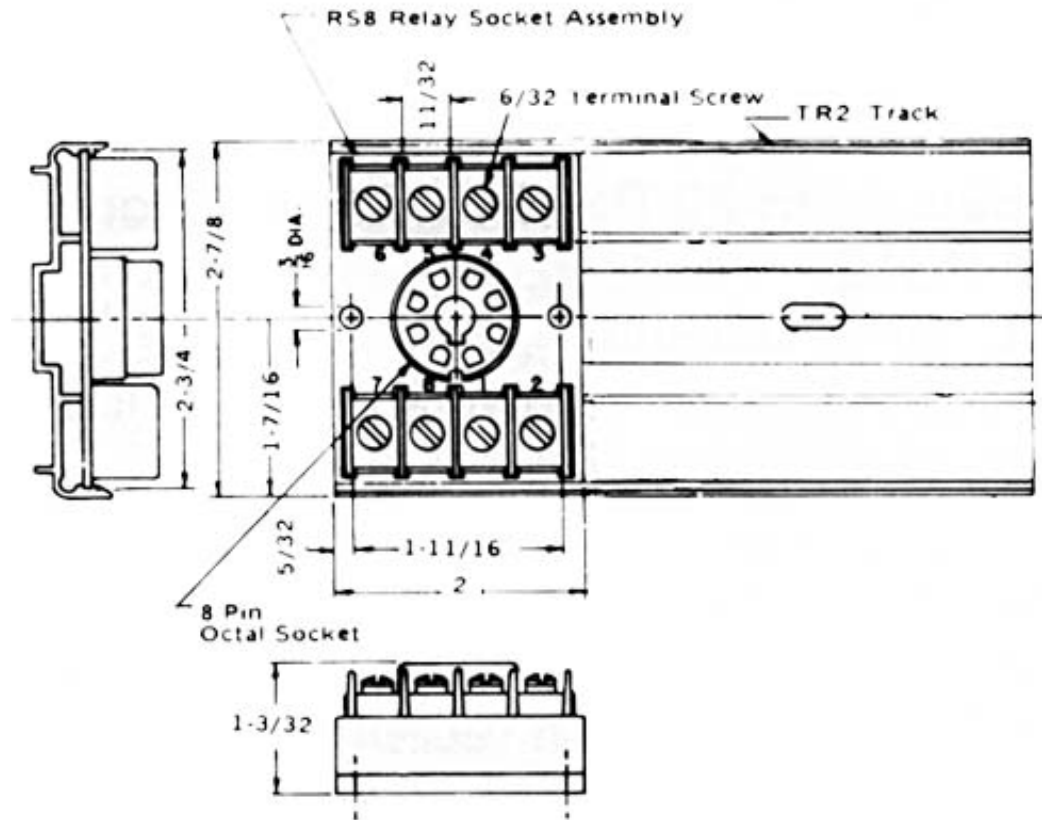


RS8 and RS8SC

8-PIN OCTAL-TYPE SOCKET ASSEMBLIES

SPECIFICATIONS

Rating:	10 amps, 250 volts.
Track:	TR2 48" length holds up to 24 sockets.
Terminals:	RS8 - No. 6-32 screws, 7/16" C. to C. spacing. RS8SC - No. 6-32 screws with captivated wire clamp. 7/16" C. to C. spacing (no lugs required).
Wire:	RS8 - up to No. 12AWG (lugs are recommended on wire larger than No. 16AWG) RS8SC - up to two No. 12AWG
Sockets:	8-pin octal receptacle to accept standard 2PDT relays and timers. Recessed slotted center post chamber allows relays to be rocked out without danger of damaging relay center posts. PC board has center post clearance hole to allow relays with screws in center post. Phosphor bronze contacts for better pin contact and retention.

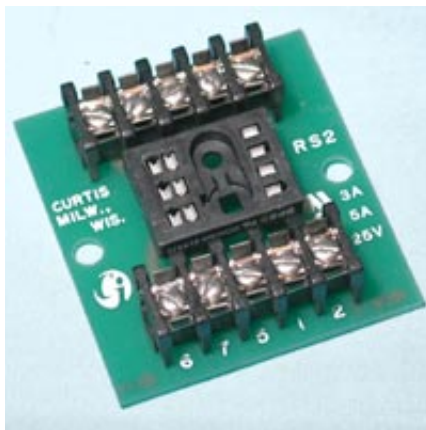
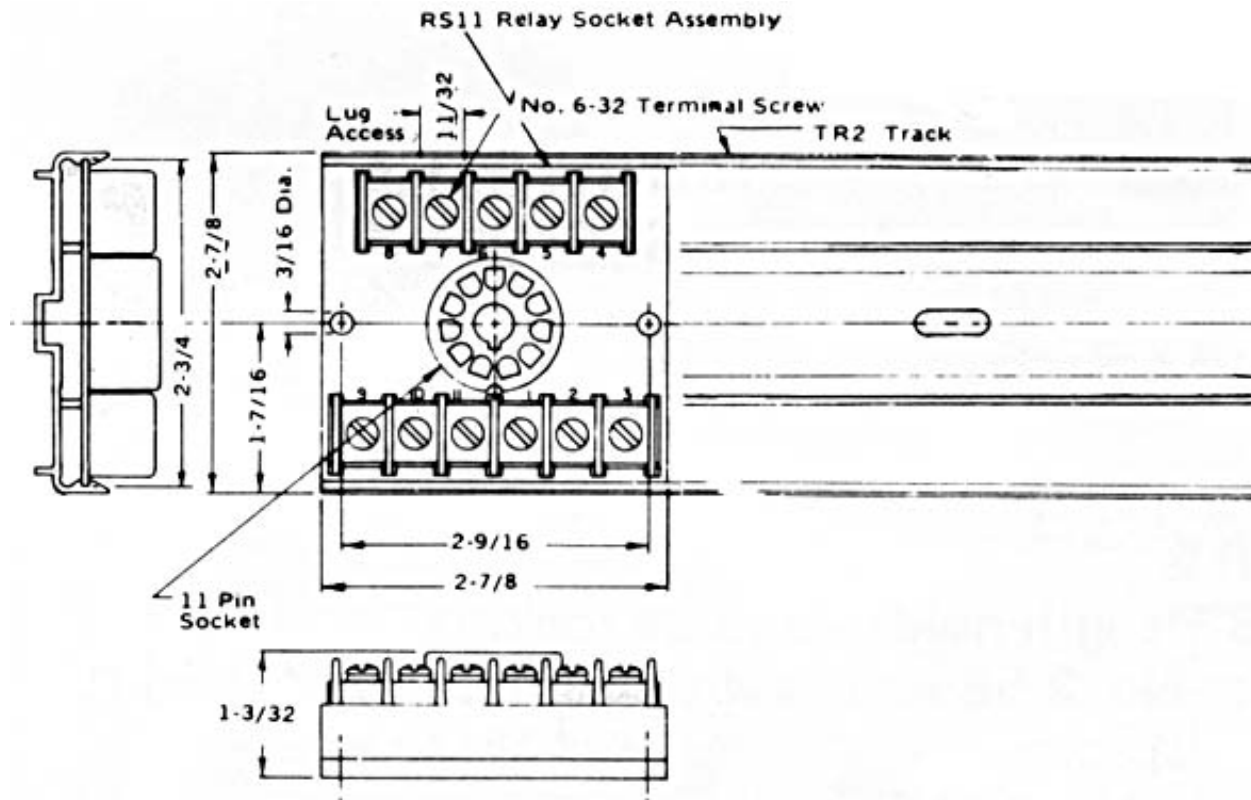


RS11 and RS11SC

11-PIN OCTAL-TYPE SOCKET ASSEMBLIES

SPECIFICATIONS

- Rating:** 10 amps, 250 volts.
- Track:** TR2
48" length holds up to 16 sockets.
- Terminals:** RS11 - No. 6-32 screws, 7/16" C. to C. spacing.
RS11SC - captivated wire clamp, 7/16: C. to C.
- Wire:** RS11 - up to No. 12AWG. (lugs are recommended on wire larger than No. 16AWG).
RS11SC - up to two No. 12AWG.
- Sockets:** 11-pin octal receptacle to accept 3PDT relays.
Refer to RSB socket for features

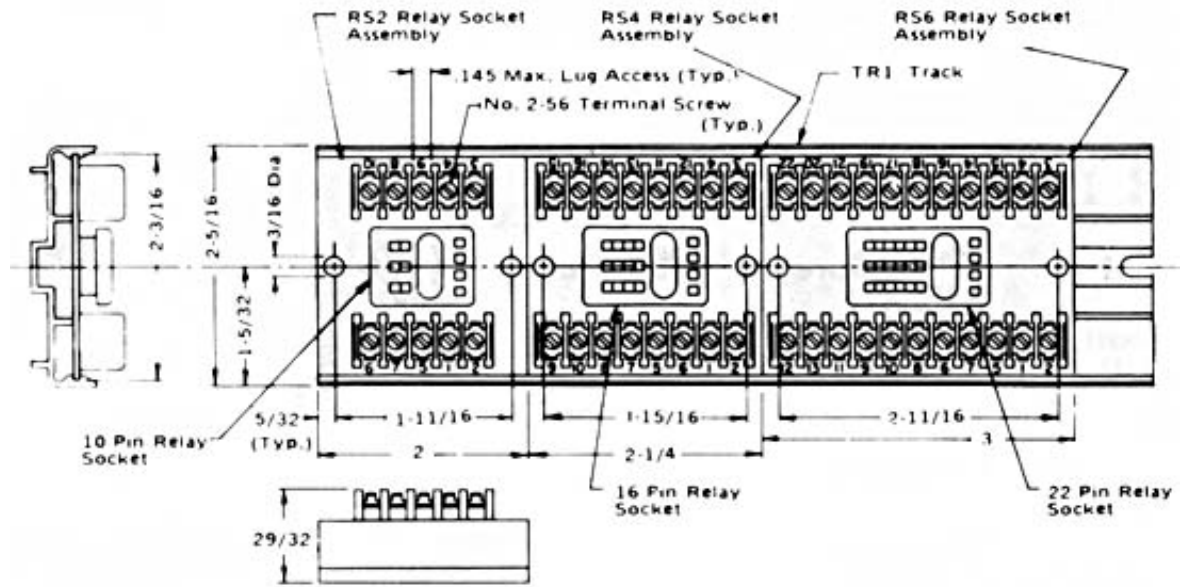
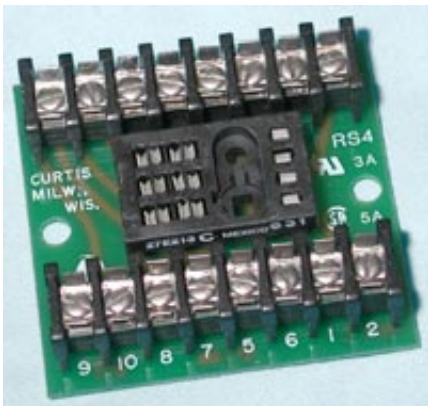


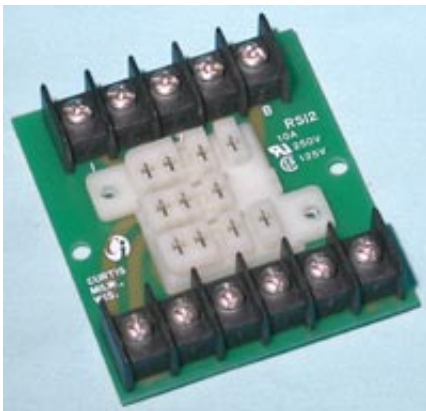
RS2, RS4 and RS6

10, 16, and 22-PIN SQUARE-BASE MINIATURE RELAY-TYPE SOCKET ASSEMBLIES

SPECIFICATIONS

Rating:	5 amps, 125 volts. (UL rated 3 amps, 125 volts)
Track:	TR1 48" length holds up to 24 RS2 sockets, 21 RS4 sockets and 16 RS6 sockets.
Terminals:	No. 2-56 screws with clamp - 1/4" C. to C. spacing.
Wire:	Up to No. 16AWG wire.
Sockets:	RS2 - 10-pin receptacle to accept miniature 2PDT relays with latching coils. RS4 - 16-pin receptacle to accept miniature 4PDT relays with latching coils. RS6 - 22-pin receptacle to accept miniature 6PDT relays with latching coils.





RS12, RS12SC, RS16 and RS16SC

8 and 11-PIN SQUARE-BASE RELAY-TYPE SOCKET ASSEMBLIES

SPECIFICATIONS

Rating: 10 amps, 250 volts.

Track: TR3

48" length holds up to 16 RS12 or RS12SC sockets.

48" length holds up to 22 RS16 or RS16SC sockets.

Terminals: RS12 and RS16 - No. 6-32 screws, 7/16" C. to C. spacing.

RS12SC and RS16SC - captivated wire clamp. 7/16" C. to C. spacing.

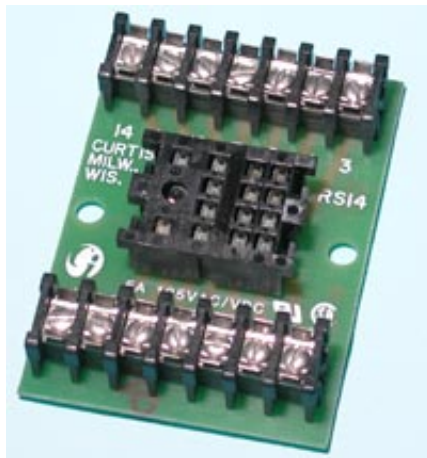
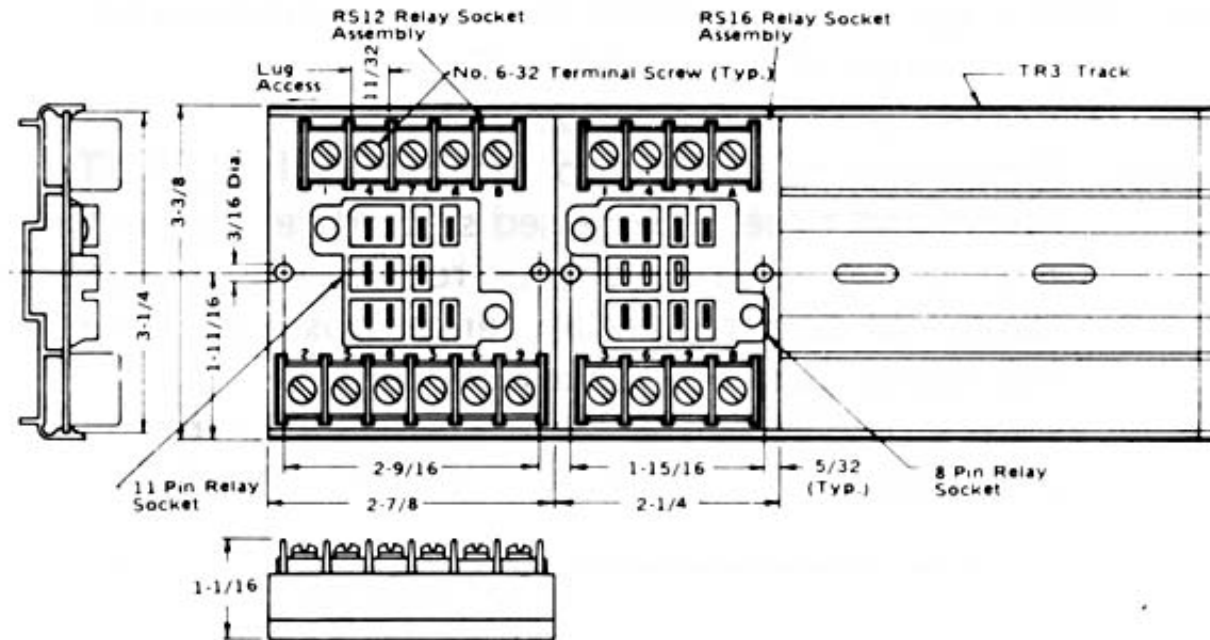
Wire: RS12 and RS16 - up to No. 12AWG. (lugs are recommended on wire larger than No. 16AWG).

RS12SC and RS16SC - up to two No. 12AWG.

Sockets: RS12 and RS12SC - 11-pin receptacle to accept 3PDT relays.

RS16 and RS 16SC - 8-pin receptacle to accept 2PDT relays.

NOTE: RS12 and RS12SC - CSA rating is 10 amps, 125 volts.

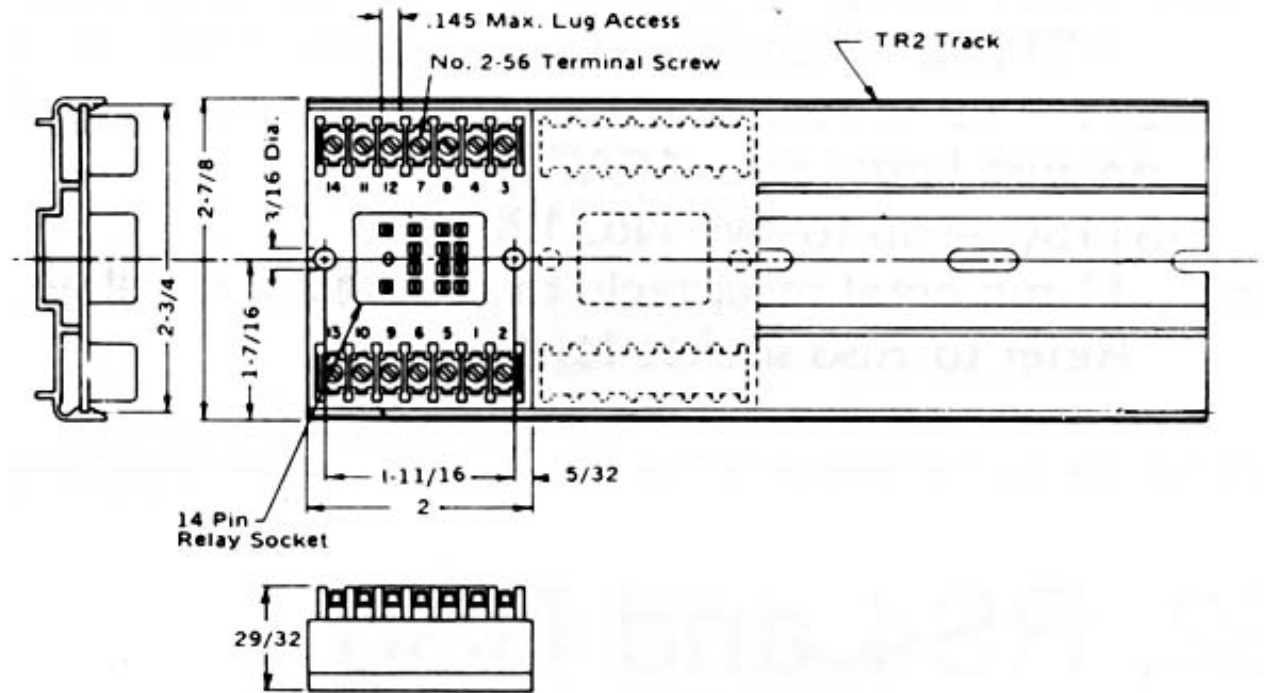


RS14

14-PIN SQUARE-BASE MINIATURE RELAY-TYPE SOCKET ASSEMBLY

SPECIFICATIONS

- Rating:** 5 amps, 125 volts.
- Track:** TR2
48" length holds up to 24 sockets.
- Terminals:** No. 2-56 screws with clamps. (1/4" C. to C. spacing)
- Wire:** up to No. 16AWG wire
- Sockets:** 14-pin receptacle to accept miniature 4PDT relays.

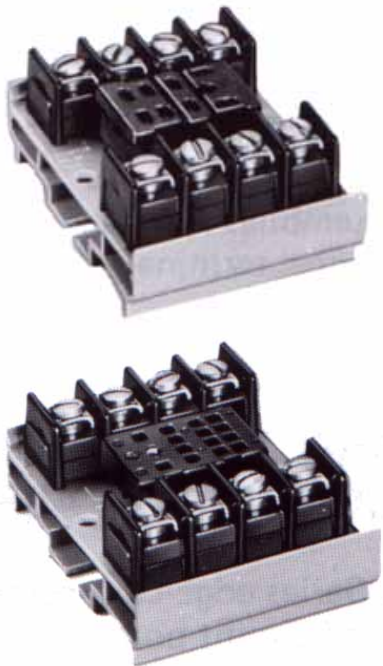
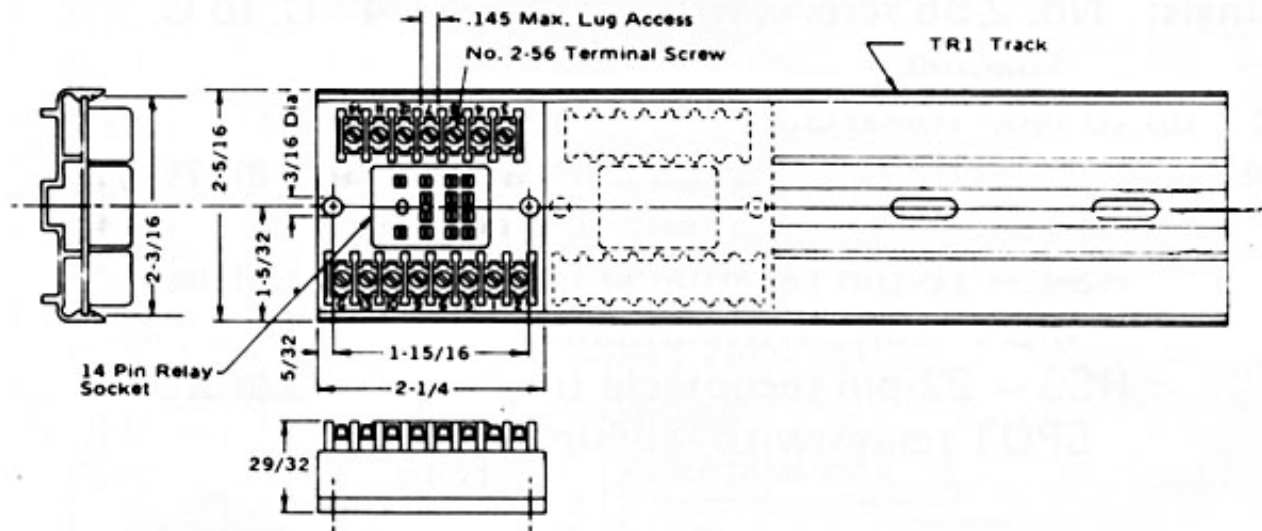


RS15

15 - PIN SQUARE-BASE GROUNDED MINIATURE RELAY-TYPE SOCKET ASSEMBLY

SPECIFICATIONS

- Rating:** 5 amps, 125 volts.TR1
- Track:** TR1
48" length holds up to 21 sockets.
- Terminals:** No. 2-56 screws with clamp - 1/4" C. to C. spacing.
- Wire:** Up to No.16AWG wire.
- Sockets:** 15-pin receptacle to accept grounded miniature 4PDT relays.



RS18, RS18SC, 19 and 19SC

8 and 14-PIN SQUARE-BASE SOCKET ASSEMBLIES FOR MININATURE SPDT AND DPDT RELAYS
SPECIFICATIONS

- Rating:** 10 amps, 250 volts.
- Track:** TR2
48" length holds up to 24 sockets.
- Terminals:** RS18/RS19 - No. 6-32 screws on 7/16" centers.
RS18SC/RS19SC - No 6-32 screws with captivated wire clamp.
- Wire:** Up to No.12AWG.
- Sockets:** RS18 - 8-pin receptacle to accept SPDT or DPDT relays.
RS19 - 14-pin receptacle to accept SPDT or DPDT relays. Will also accept 4PDT relays with contacts paralleled.

