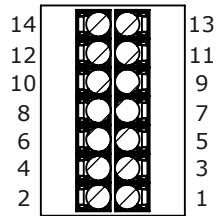
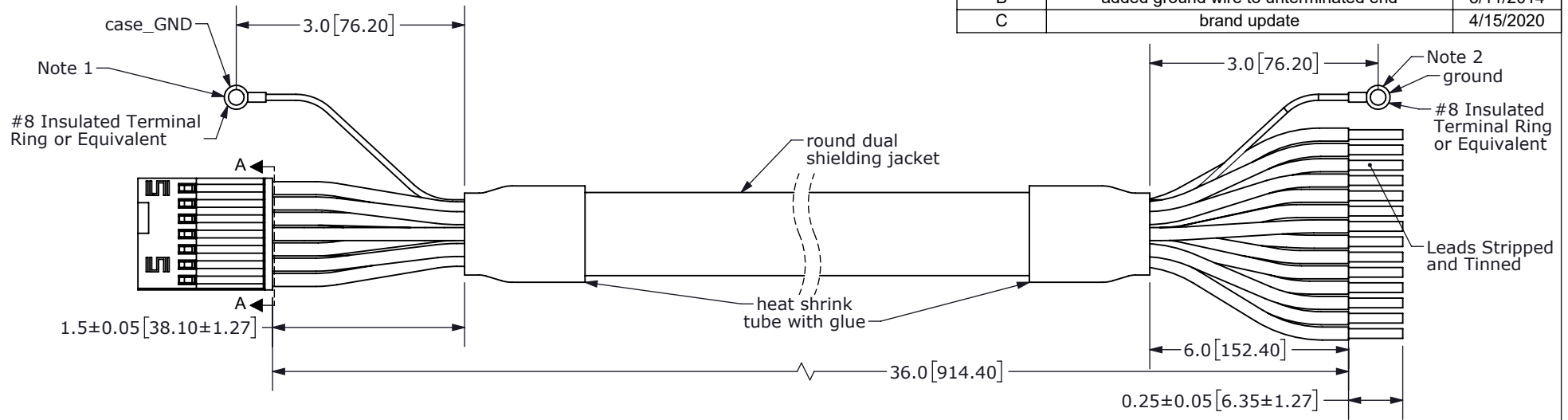
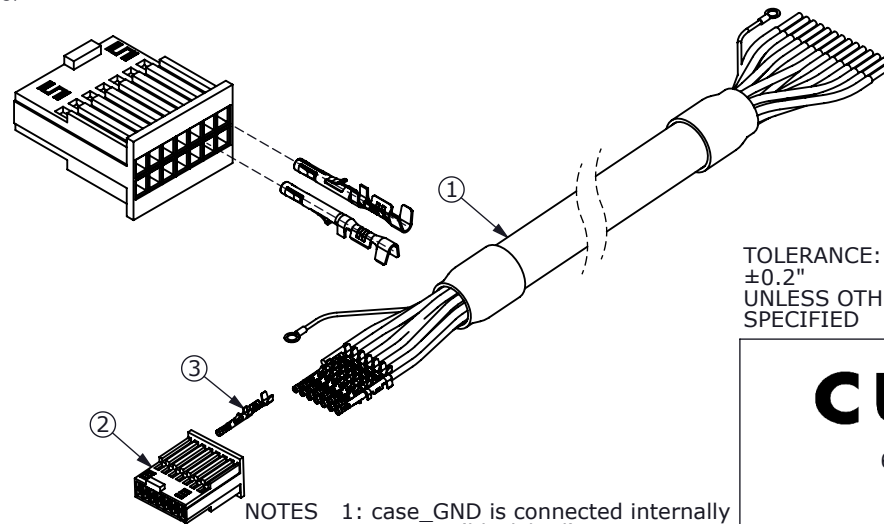


| REV. | DESCRIPTION                           | DATE      |
|------|---------------------------------------|-----------|
| A    | initial release                       | 7/29/2013 |
| B    | added ground wire to unterminated end | 3/11/2014 |
| C    | brand update                          | 4/15/2020 |



SECTION A-A  
SCALE 3 : 1  
(Back of Connector Housing)



NOTES 1: case\_GND is connected internally to GND (black/red)  
2: ground is connected internally to cable shielding  
3: To enable commutation output of AMT303, tie COMM to GND.

TOLERANCE:  
±0.2"  
UNLESS OTHERWISE  
SPECIFIED



**CUI DEVICES**

6405 SW Rosewood St, Suite C  
Lake Oswego, OR 97035  
Phone: 877-323-3576

Website: [www.cuidevices.com](http://www.cuidevices.com)

| Connector Pinout |          |          |         |        |
|------------------|----------|----------|---------|--------|
| #                | Function |          | Color   |        |
|                  | AMT203   | AMT303   | Primary | Stripe |
| 1                | UNUSED   |          | Blue    | Red    |
| 2                | CSB      | Zero Set | Green   | Red    |
| 3                | MISO     | U+       | Brown   | Black  |
| 4                | GND      |          | Black   | Red    |
| 5                | SCK      | W+       | Orange  | Black  |
| 6                | +5V      |          | Red     | Black  |
| 7                | MOSI     | V+       | Red     | White  |
| 8                | B+       |          | Green   | Black  |
| 9                | UNUSED   | B-       | Black   | Green  |
| 10               | A+       |          | White   | Black  |
| 11               | UNUSED   | A-       | Black   | White  |
| 12               | Z+       |          | Blue    | Black  |
| 13               | UNUSED   | Z-       | Black   | Blue   |
| 14               | UNUSED   | COMM     | Yellow  | Black  |

PC FILE NAME:  
AMT-14C-0-036-2

COPYRIGHT 2020 BY CUI DEVICES

|   | Part       | QTY | Part#                  |
|---|------------|-----|------------------------|
| 1 | Cable      | 1   | 3M 3600B/20            |
| 2 | Connector  | 1   | Samtec ISDF-07-D-L     |
| 3 | Crimp Pins | 14  | Samtec CC03L-2830-01-G |

|           |                 |              |          |
|-----------|-----------------|--------------|----------|
| ITEM NO:  | 977-7016R       | REV:         | C        |
| PART NO:  | AMT-14C-0-036-2 | UNITS:       | INCH[MM] |
| DRAWN BY: | RDS             | APPROVED BY: |          |
|           |                 | SCALE:       | 2:1      |