

MODEL NO:



CUI INC

PAGE NO: 1 of 5

PART NO: **DPS120150U-P5**

UNIT: mm

DATE: **04/24/02**

All information contained herein applies only to the above listed part number. Other versions of this part number with electrical or mechanical variations are available. Contact CUI Inc. for further assistance. 9615 SW Allen Blvd., Ste. 103, Beaverton OR 97005  
800-275-4899 • 503-643-4899 • Fax: 503-643-6129 • [www.cui.com](http://www.cui.com)

1 INPUT:

- 1-1 AC INPUT VOLTAGE: 90~264 VAC
- 1-2 AC INPUT FREQUENCY: 50 TO 60 Hz
- 1-3 AC INPUT CURRENT: 0.40 AMP (RMS) FOR 115 VAC  
0.20 AMP (RMS) FOR 230 VAC
- 1-4 AC INRUSH CURRENT: 30 AMP-PEAK FOR 115 VAC  
50 AMP-PEAK FOR 230 VAC  
FULL LOAD, 25 DEG C, COLD START

2 OUTPUT

- 2-1 OUTPUT VOLTAGE: +12V
  - 2-2 TOTAL REGULATION: +/- 5%
  - 2-3 MIN LOAD CURRENT: 0.0A
  - 2-4 MAX LOAD CURRENT: 1.5A
  - 2-5 RIPPLE AND NOISE: 120 mVp-p
- \*1 NOISE TEST FREQUENCY AT 20 MHz  
EACH OUTPUT BYPASS A 0.1uF & A 10uF CAPACITORS TO GND

3 OVERALL PERFORMANCE

- 3-1 TOTAL OUTPUT POWER: 18W
- 3-2 EFFICIENCY: 70% MIN. AT 115 VAC, 60Hz, FULL LOAD
- 3-3 RISE TIME: 100 mSEC.max

4 PROTECTION

- 4-1 OVER-CURRENT PROTECTION: SHORT CIRCUIT PROTECTION
- 4-2 TOTAL POWER PROTECTION

5 ENVIRONMENTAL

- 5-1 OPERATING TEMPERATURE: 0°C TO 40°C
- 5-2 STORAGE TEMPERATURE: -40°C TO 70°C
- 5-3 OPERATING HUMIDITY: 10~90% RH. NON-CONDENSATION
- 5-4 STORAGE HUMIDITY: 5~95% RH. NON-CONDENSATION
- 5-5 MECHANICAL SIZE: 81mm (L) x 53mm (W) x 42mm (H)

MODEL NO:



**CUI INC**

PAGE NO: 2 of 5

PART NO: **DPS120150U-P5**

UNIT: mm

DATE: **04/24/02**

All information contained herein applies only to the above listed part number. Other versions of this part number with electrical or mechanical variations are available. Contact CUI Inc. for further assistance. 9615 SW Allen Blvd., Ste. 103, Beaverton OR 97005  
800-275-4899 • 503-643-4899 • Fax: 503-643-6129 • [www.cui.com](http://www.cui.com)

#### 6 SAFETY STANDARDS

- 6-1 DESIGNED TO MEET THE STANDARDS: UL/CSA/TUV
- 6-2 LEAKAGE CURRENT: 0.25mA MAX

#### 7 DIELECTRIC WITHSTAND TEST

- 7-1 INPUT TO OUTPUT: 3000 Vrms, 10mA, 1 MIN

#### 8 RELIABILITY

- 8-1 BURN IN: 4 HRS, 40+/-5°C, FULL LOAD, 230 VAC, 60Hz

MODEL NO:

PART NO: **DPS120150U-P5**



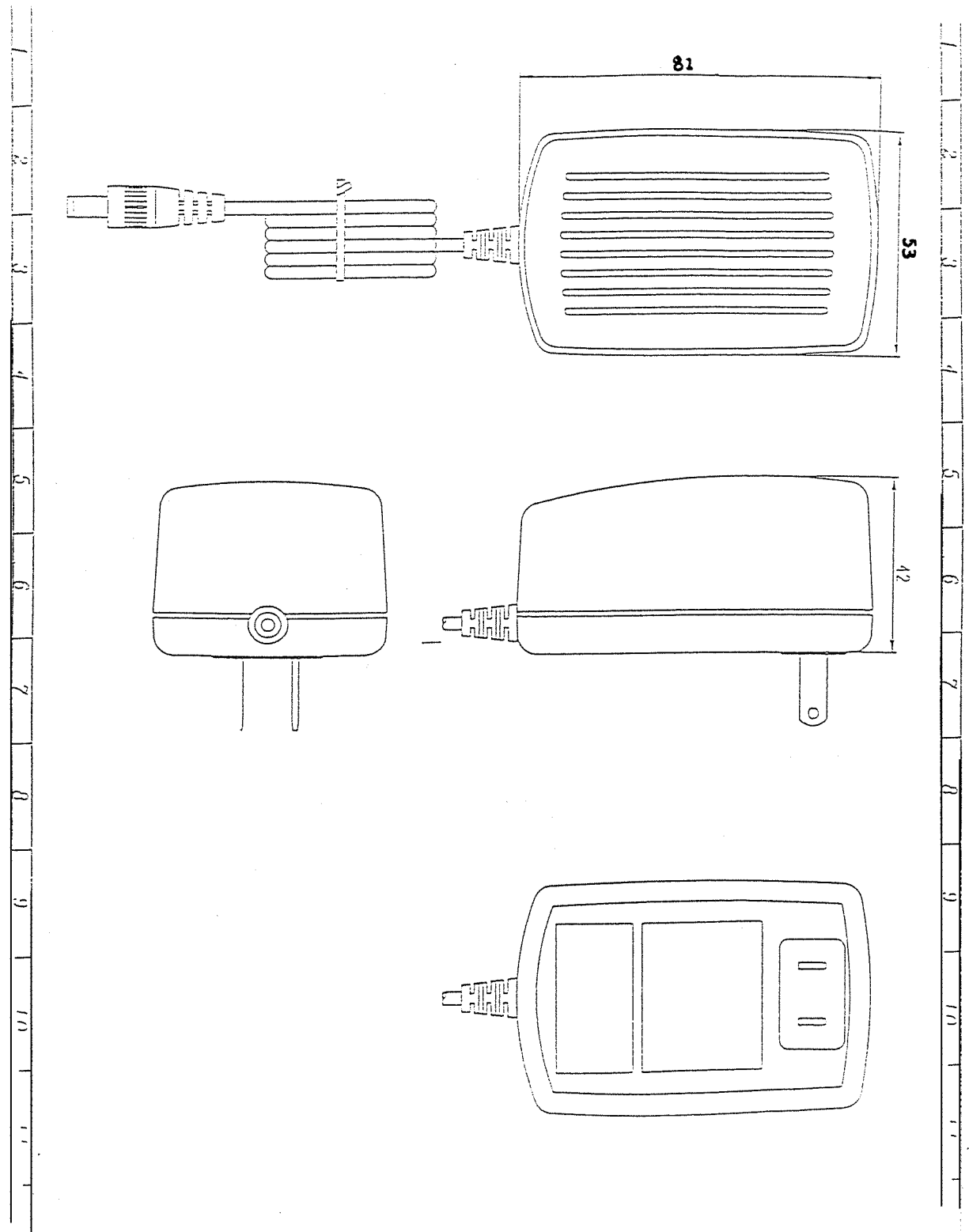
**CUI INC**

PAGE NO: **3 of 5**

UNIT: mm

DATE: **04/24/02**

All information contained herein applies only to the above listed part number. Other versions of this part number with electrical or mechanical variations are available. Contact CUI Inc. for further assistance. 9615 SW Allen Blvd., Ste. 103, Beaverton OR 97005  
800-275-4899 • 503-643-4899 • Fax: 503-643-6129 • [www.cui.com](http://www.cui.com)



MODEL NO:

PART NO: DPS120150U-P5

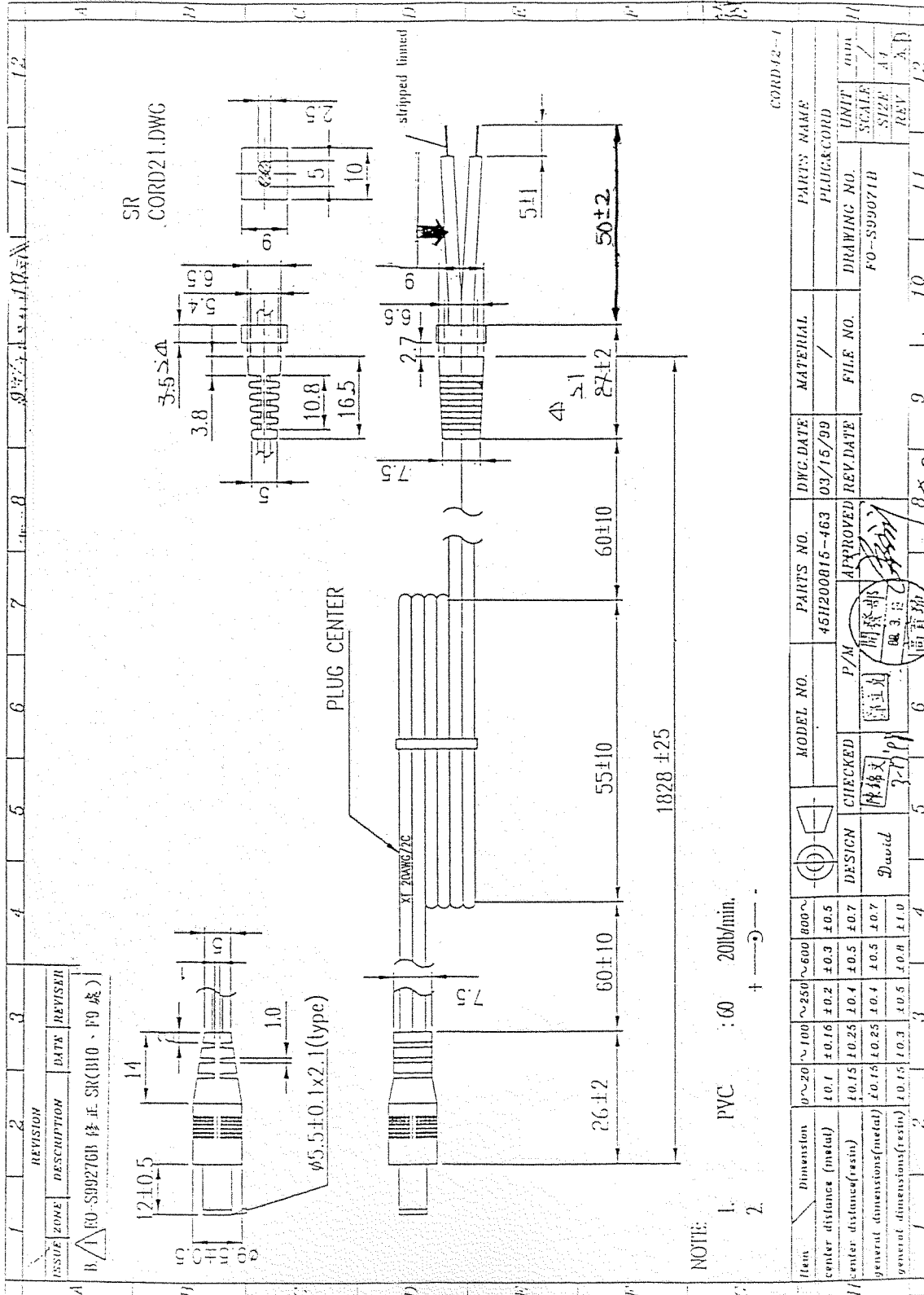


PAGE NO: 4 of 5

UNIT: mm

DATE: 04/24/02

All information contained herein applies only to the above listed part number. Other versions of this part number with electrical or mechanical variations are available. Contact CUI Inc. for further assistance. 9615 SW Allen Blvd., Ste. 103, Beaverton OR 97005  
800-275-4899 • 503-643-4899 • Fax: 503-643-6129 • www.cui.com



NOTE:

1. PVC : 60 20lb/min.
2. + →

Item	Dimension	0~20	~100	~250	~600	800~
center distance (metal)	±0.1	±0.16	±0.2	±0.3	±0.5	±0.5
center distance (resin)	±0.15	±0.25	±0.4	±0.5	±0.7	±0.7
general dimensions (metal)	±0.15	±0.25	±0.4	±0.5	±0.7	±0.7
general dimensions (resin)	±0.15	±0.3	±0.5	±0.8	±1.0	±1.0

REVISION	DATE	REVISOR
1		
2		
3		
4		
5		
6		
7		
8		
9		
10		
11		
12		

DESIGN	CHECKED	P/M	APPROVED	PARTS NO.	DWG. DATE	MATERIAL	PARTS NAME
David	陳錦文	陳錦文	陳錦文	45H200815-463	03/15/99	/	PLUG&CORD

DRAWING NO.	FILE NO.	UNIT	SCALE	SIZE	REV
FO-S99071B		mm	/	A4	A, B

MODEL NO:

PART NO: **DPS120150U-P5**



**CUI INC**

PAGE NO: **5 of 5**

UNIT: mm

DATE: **04/24/02**

All information contained herein applies only to the above listed part number. Other versions of this part number with electrical or mechanical variations are available. Contact CUI Inc. for further assistance. 9615 SW Allen Blvd., Ste. 103, Beaverton OR 97005  
800-275-4899 • 503-643-4899 • Fax: 503-643-6129 • www.cui.com

