



All information contained herein applies only to the above listed part number. Other versions of this part number with electrical or mechanical variations are available. Contact CUI Inc. for further assistance. 9615 SW Allen Blvd., Ste. 103, Beaverton OR 97005
800-275-4899 • 503-643-4899 • Fax: 503-643-6129 • www.cui.com

1 INPUT

1-1	AC INPUT VOLTAGE:	100 TO 120 VAC
1-2	AC INPUT FREQUENCY:	50 TO 60 Hz
1-3	AC INPUT CURRENT:	0.40 AMP (RMS) FOR 115 VAC
1-4	AC INRUSH CURRENT:	30 AMP-PEAK FOR 115 VAC FULL LOAD, 25 °C, COLD START

2 OUTPUT

2-1	OUTPUT VOLTAGE:	+12.0 V
2-2	TOTAL REGULATION:	+/- 5%
2-3	MIN LOAD CURRENT:	0.0A
2-4	MAX LOAD CURRENT:	1.25 A
2-7	RIPPLE AND NOISE:	120 mVp-p MAX AT 115VAC, 60Hz, MAX LOAD, 25°C

*1 NOISE TEST FREQUENCY AT 20 MHz

EACH OUTPUT BYPASS A 0.1uF & 10uF CAPACITORS TO GROUND

3 OVERALL PERFORMANCE

3-1	TOTAL OUTPUT POWER:	15W
3-2	EFFICIENCY:	70% MIN. AT 115VAC, 60Hz, MAX LOAD
3-3	HOLD UP TIME:	8mSEC. MIN. AT 115VAC, 60Hz, MAX LOAD

4 PROTECTION

4-1	OVER-CURRENT PROTECTION:	SHORT CIRCUIT PROTECTION
4-2	OVER-VOLTAGE PROTECTION:	13.5V MAX
4-3	TOTAL POWER PROTECTION	

5 MECHANICAL SPECIFICATION

5-1	DIMENSION:	81 (L) X 53 (W) X 35 (H)mm (TOLERANCE AS DRAWING)
5-2	WEIGHT:	300g MAX

6 ENVIRONMENTAL

6-1	OPERATING TEMPERATURE:	0°C TO 40°C
6-2	STORAGE TEMPERATURE:	-40°C TO 70°C
6-3	OPERATING HUMIDITY:	10~90% RH. NON-CONDENSATION
6-4	STORAGE HUMIDITY:	5~95% RH. NON-CONDENSATION

MODEL NO:



CUI INC

PAGE NO: **2 of 5**

PART NO: **DPS120125-P5**

UNIT: **mm**

DATE: **04/24/02**

All information contained herein applies only to the above listed part number. Other versions of this part number with electrical or mechanical variations are available. Contact CUI Inc. for further assistance. 9615 SW Allen Blvd., Ste. 103, Beaverton OR 97005
800-275-4899 • 503-643-4899 • Fax: 503-643-6129 • www.cui.com

7 SAFETY STANDARDS

7-1 DESIGNED TO MEET THE STANDARDS: UL/CUL/T-MARK

8 DIELECTRIC WITHSTAND TEST

8-1 INPUT TO OUTPUT: 3000Vrms, 10mA, 1 MIN

8-2 LEAKAGE CURRENT: 0.25mA MAX

9 RELIABILITY

9-1 MTBF: 50,000 HOURS MIN

9-2 BURN IN: 4 HRS, 45 +/-5°C, MAX LOAD, 115 VAC, 60Hz

MODEL NO:

PART NO: **DPS120125-P5**



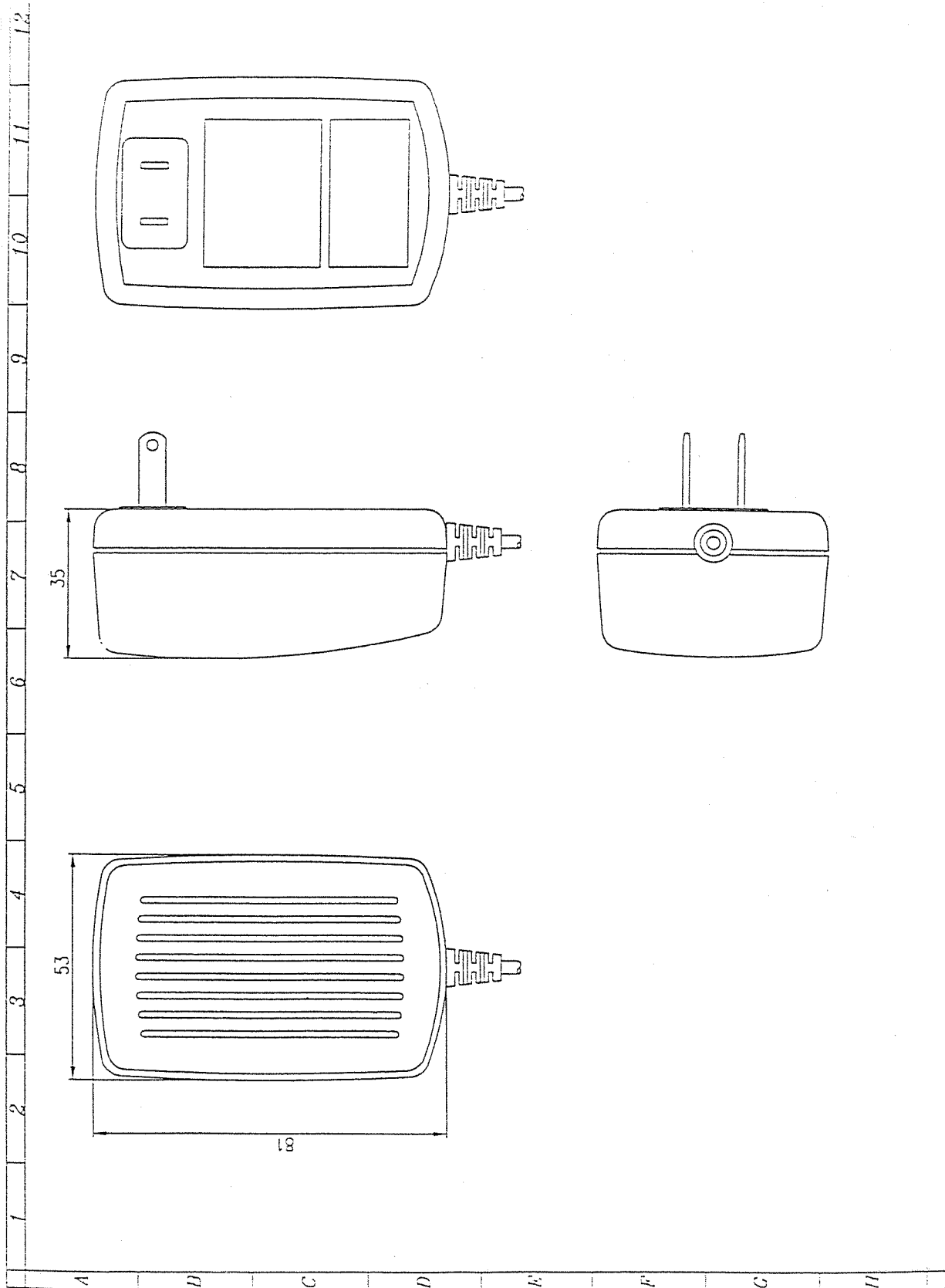
CUI INC

PAGE NO: **3 of 5**

UNIT: mm

DATE: **04/24/02**

All information contained herein applies only to the above listed part number. Other versions of this part number with electrical or mechanical variations are available. Contact CUI Inc. for further assistance. 9615 SW Allen Blvd., Ste. 103, Beaverton OR 97005
800-275-4899 • 503-643-4899 • Fax: 503-643-6129 • www.cui.com



MODEL NO:

PART NO: DPS120125-P5



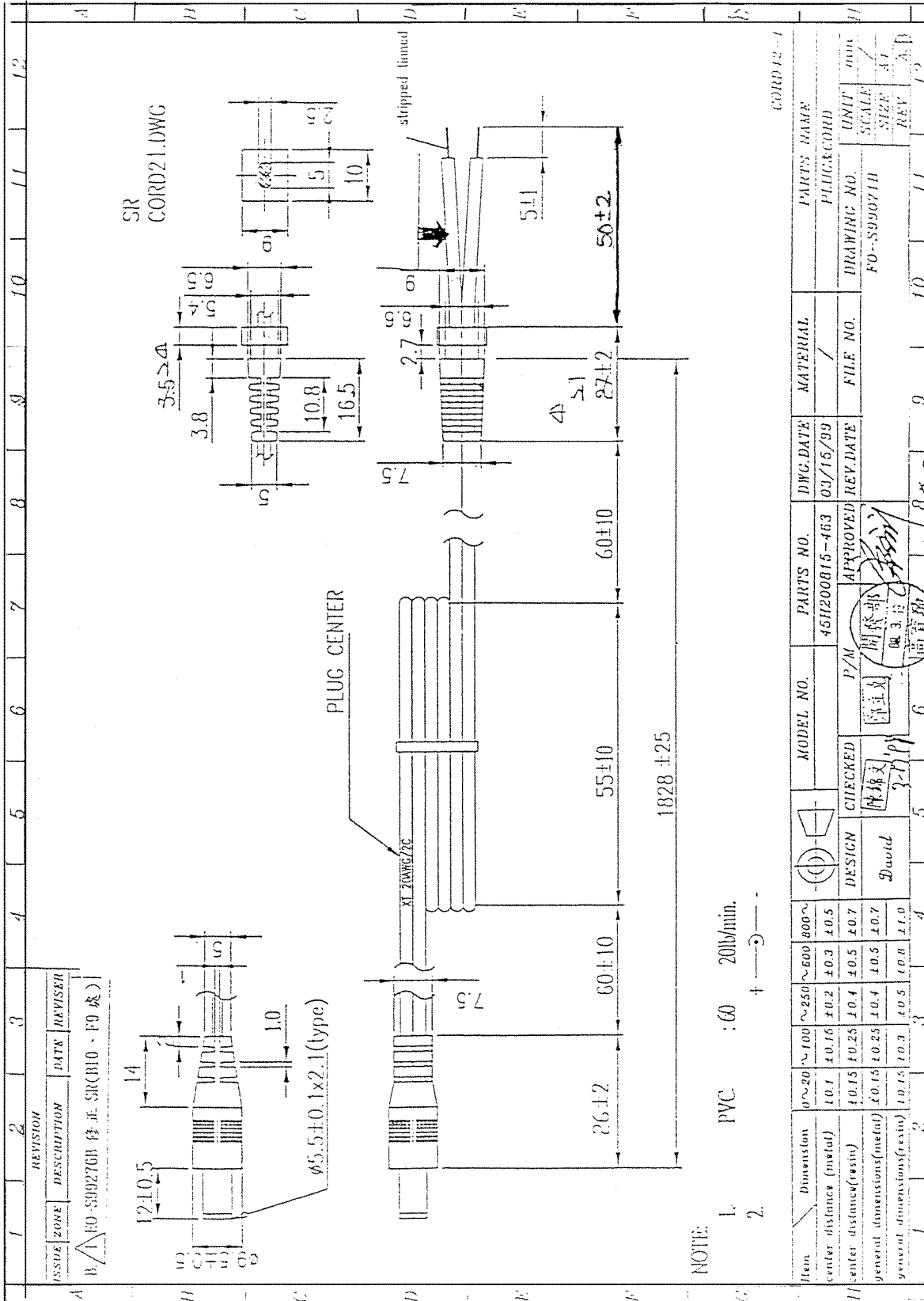
CUI INC

PAGE NO: 4 of 5

UNIT: mm

DATE: 04/24/02

All information contained herein applies only to the above listed part number. Other versions of this part number with electrical or mechanical variations are available. Contact CUI Inc. for further assistance. 9615 SW Allen Blvd., Ste. 103, Beaverton OR 97005
800-275-4899 • 503-643-4899 • Fax: 503-643-6129 • www.cui.com



NOTE:

1. PVC : 60 20lb/min.
2. + 3 - -

Item	Dimension	0~20	20~100	100~250	250~600	600~800	800~	DESIGN	CHECKED	MODEL NO.	PARTS NO.	DWG DATE	MATERIAL	PARTS NAME
center distance (metal)		1.01	±0.16	±0.2	±0.3	±0.5	±0.5			P/M	45H200815-463	03/15/99	/	PLUG&CORD
center distance (resin)		1.015	±0.25	±0.4	±0.5	±0.7	±0.7							
general dimensions (metal)		±0.15	±0.25	±0.4	±0.5	±0.7	±0.7							
general dimensions (resin)		±0.15	±0.3	±0.5	±0.8	±1.0	±1.0							

APPROVED: [Signature] 3/15/99
DATE: 03/15/99

REV: 11
SCALE: A1
UNIT: mm

MODEL NO:

PART NO: **DPS120125-P5**



CUI INC

PAGE NO: **5 of 5**

UNIT: mm

DATE: **04/24/02**

All information contained herein applies only to the above listed part number. Other versions of this part number with electrical or mechanical variations are available. Contact CUI Inc. for further assistance. 9615 SW Allen Blvd., Ste. 103, Beaverton OR 97005
800-275-4899 • 503-643-4899 • Fax: 503-643-6129 • www.cui.com

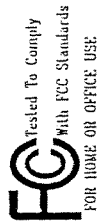
LEVEL 3

ITE I.P.S



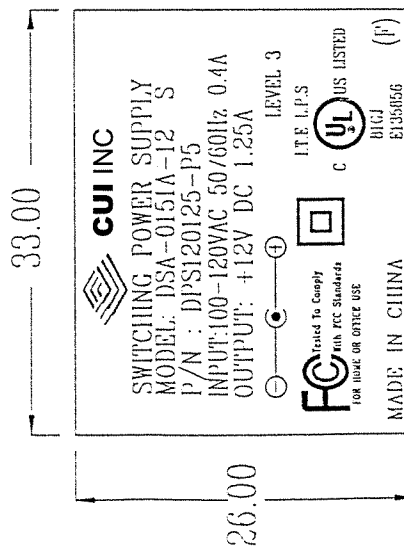
UL US LISTED

B1CJ E135856



Tested To Comply With FCC Standards FOR HOME OR OFFICE USE

NOTE:



PVC(UL,CSA APPROVAL)

UL,CSA

2:1

MODEL NO:	1	2	3	4	5	6	7	8	9	10	11	12	
DEPARTMENT	R&D SPS		SCALE	2:1	UNIT	mm	TOLERANCE	+0-0.25	PART NAME	LABEL		PART NO.	89P015112-40
APPD.	陈方舟		CRD.	陈方舟	SAFETY	包平公	MATERIAL		DWG BY	YUAN		DRAWING NO.	F0-S99065B
	PAGE 1 OF 1								DATE:	01-14-2000		REV	B